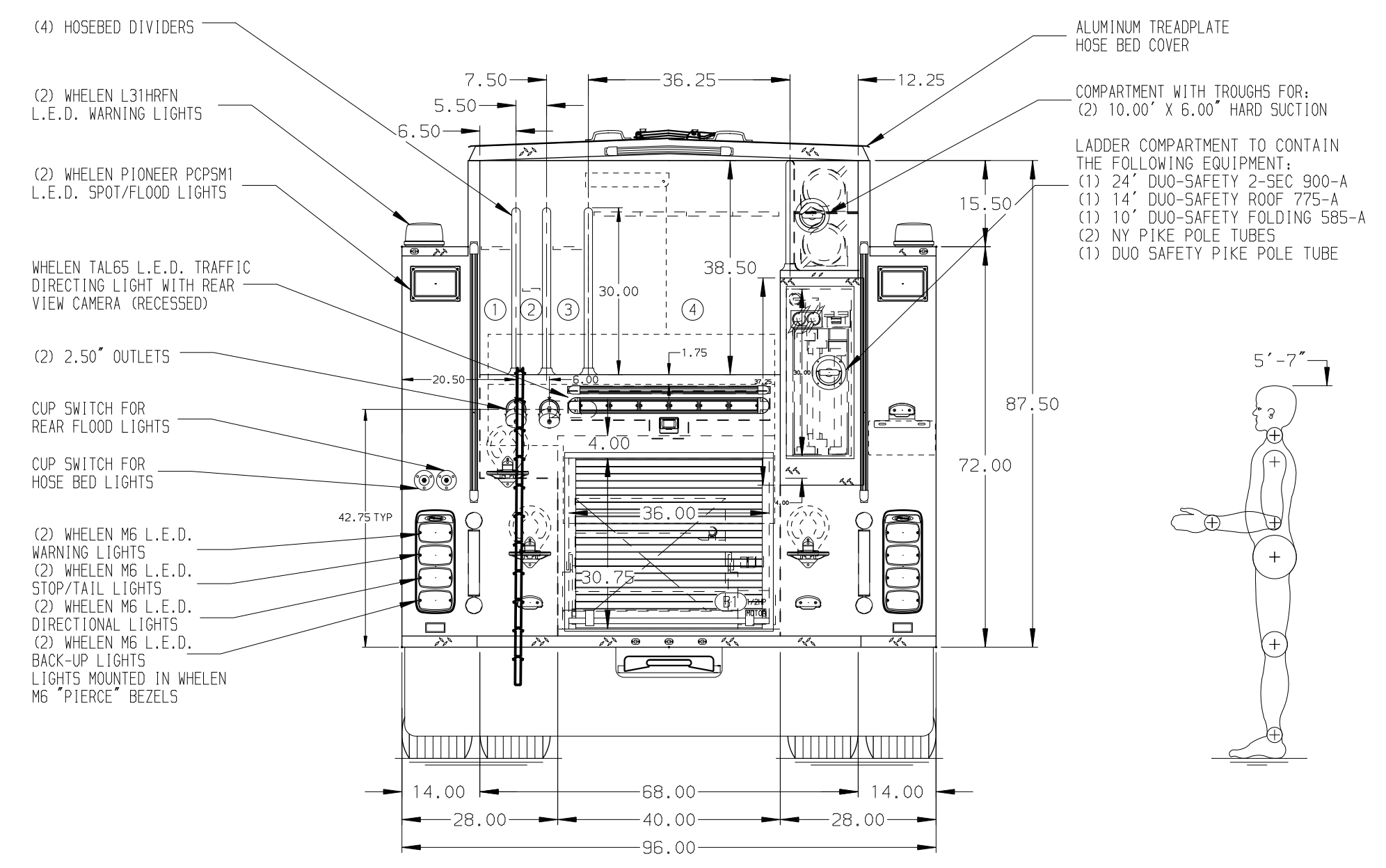
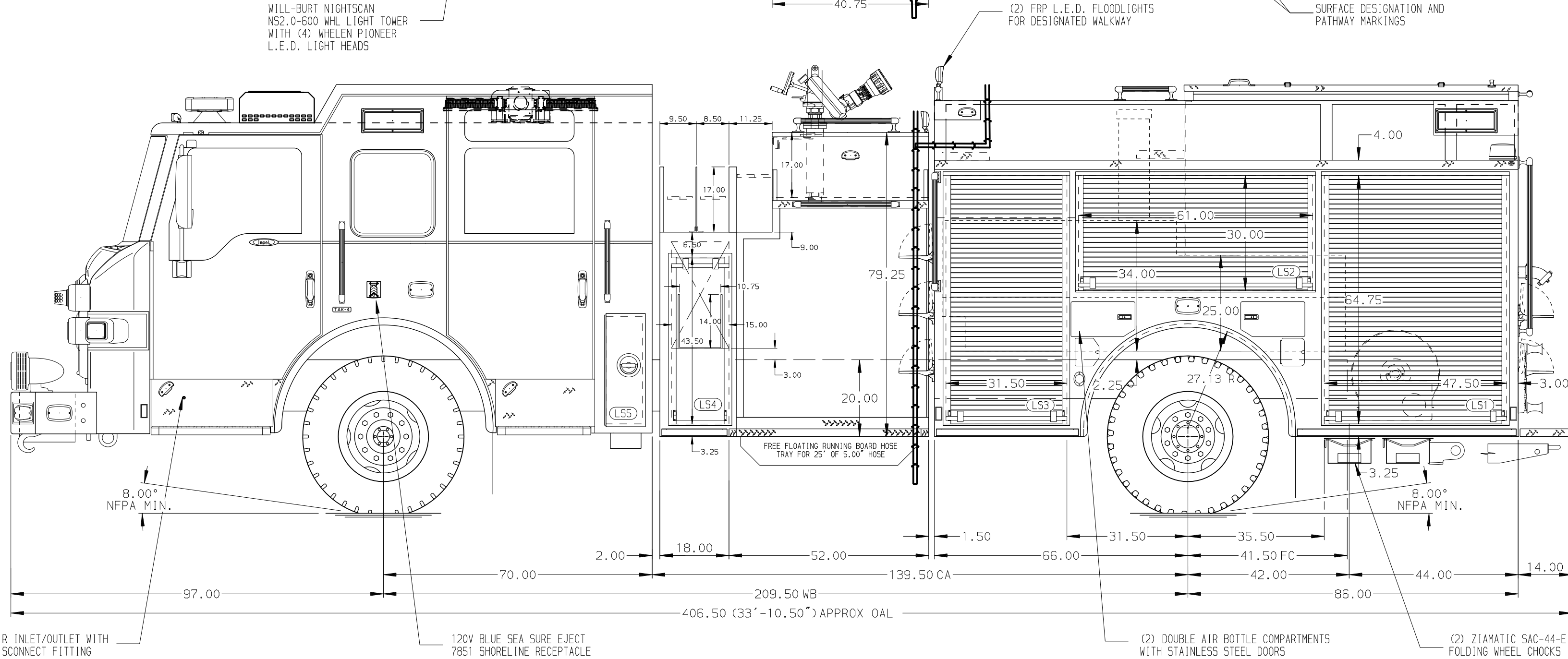


- HOSEBED CAPACITIES**
- ① - 300' OF 3.00" ECO-10 KEY HOSE
  - ② - 200' OF 1.75" ECO-10 KEY HOSE
  - ③ - 300' OF 3.00" ECO-10 KEY HOSE
  - ④ - 1000' OF 5.00" ECO-10 KEY HOSE



ALUMINUM BODY

SIDE ROLL AND FRONTAL IMPACT PROTECTION

**NOTE**  
DIMENSIONS SHOWN ARE APPROXIMATE AND ARE SUBJECT TO MINOR DEVIATIONS AS MAY OCCUR OR BE NECESSARY IN CONSTRUCTION. MINOR DETAILS NOT SHOWN.

- BATTERY CHARGER LOCATED BEHIND DRIVER SEAT
- BATTERY CHARGE INDICATOR LOCATED NEAR DRIVER'S SEAT RISER WITH BRACKET
- DRIP PAN GUARD FOR ROLL-UP DOOR LOCATED PER SHOP ORDER
- FIVE FULL WIDTH/DEPTH ADJUSTABLE SHELVES LOCATED PER SHOP ORDER
- ONE FLOOR MOUNTED SLIDE-OUT TRAY LOCATED PER SHOP ORDER
- ONE ALUMINUM MOUNTING PLATE LOCATED PER SHOP ORDER
- SIX ALUMINUM PEGBOARDS ON BACK WALLS LOCATED PER SHOP ORDER
- ONE HANNAY HOSE REEL WITH CAPACITY FOR 200' OF 1.00" BOOSTER HOSE LOCATED IN COMPARTMENT B1 (MODEL: HANNAY EF34-23-24)

CUSTOMER APPROVAL			
APPROVED BY:			
DATE:			
CHASSIS DATA	TITLE	2000-D-500P, 500 GALLON WATERTANK, 152" FDLER PUMPER LADDERS BTWN TANK & SS, (3) CROSSLAYS, LIGHT TOWER	
MAKE	FOR	KATY FIRE DEPARTMENT KATY, TEXAS	
PIERCE			
MODEL	DWG NO.	37898AD	
REV	DATE	BY	CH
			IMPEL FR

Pierce MANUFACTURING INC.		JOB NO.	37898
SCALE	1:24	DATE	
DRAWN BY	JJB		180CT22
CHECKED BY	WKL		180CT22
SHEET SIZE	D	SHEET NO.	1 OF 1