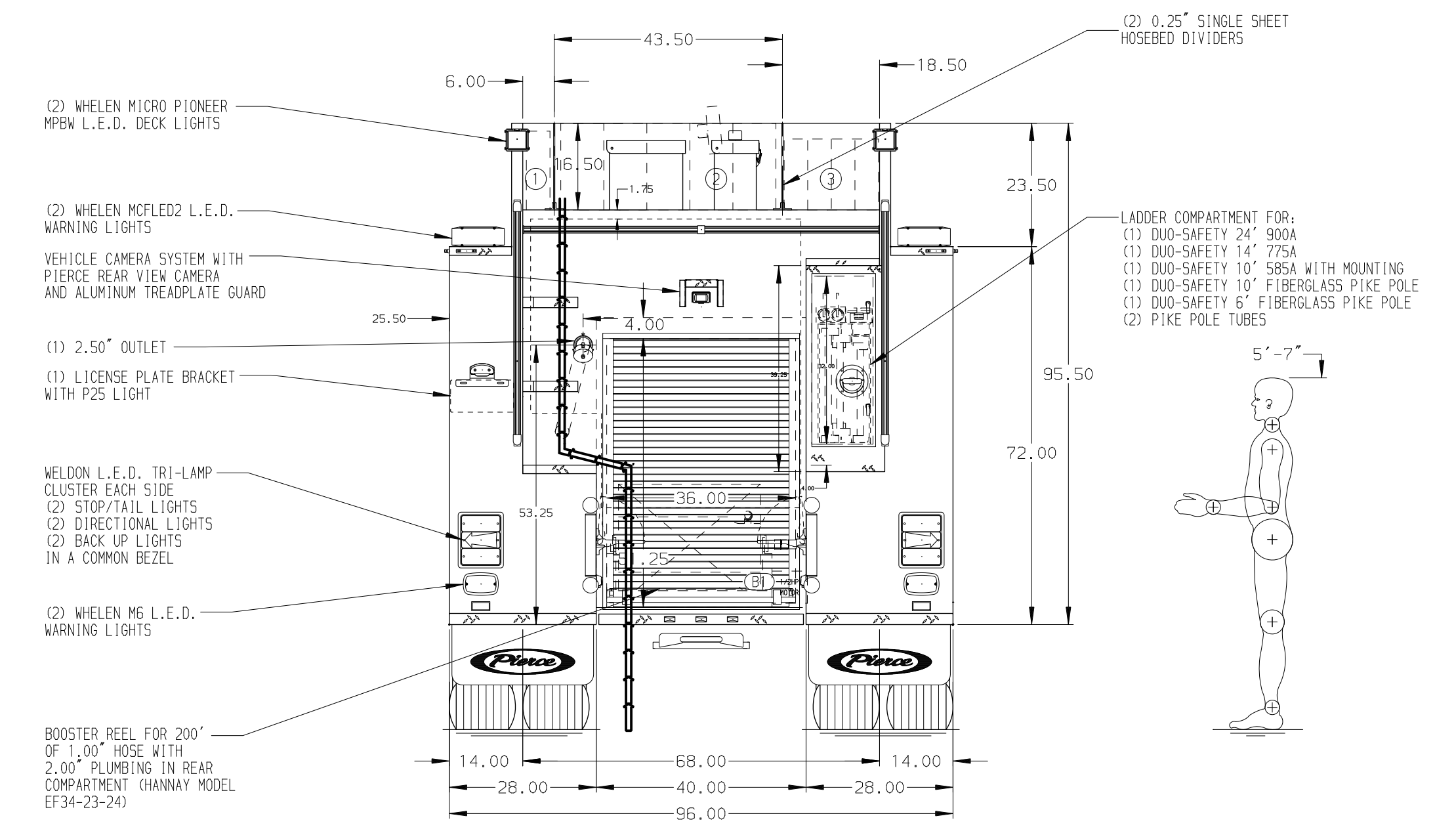
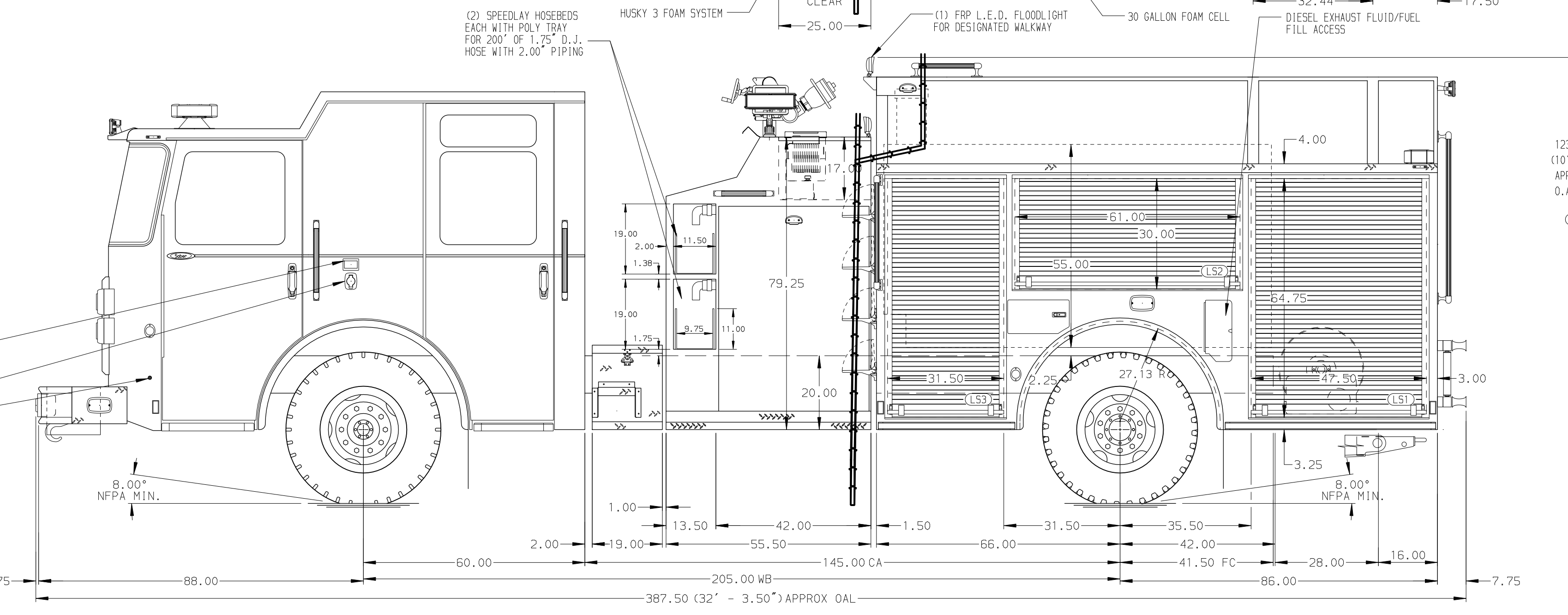


- SURFACE DESIGNATION AND PATHWAY MARKINGS
- HOSEBED CAPACITIES
- ① - 200' OF 2.50" D.J. POLY HOSE
  - ② - 1000' OF 5.00" RUBBER HOSE
  - ③ - 750' OF 2.50" D.J. POLY HOSE



ALUMINUM BODY

**NOTE**  
 DIMENSIONS SHOWN ARE APPROXIMATE AND ARE SUBJECT TO MINOR DEVIATIONS AS MAY OCCUR OR BE NECESSARY IN CONSTRUCTION. MINOR DETAILS NOT SHOWN.

1. BATTERY CHARGER LOCATED IN COMPARTMENT PER ORDER
2. SIX FULL WIDTH/DEPTH ADJUSTABLE SHELVES IN COMPARTMENTS PER ORDER
3. ONE ADJUSTABLE SLIDE-OUT TRAY IN COMPARTMENT PER ORDER
4. TWO FLOOR MOUNTED SLIDE-OUT TRAYS IN COMPARTMENTS PER ORDER
5. PARTITION BETWEEN COMPARTMENTS LS1/B1 AND RS1/B1
6. AIR INLET WITH DISCONNECT COUPLING LOCATED IN D5 CAB CORNER
7. WHEEL CHOCK MOUNTING BRACKETS PROVIDED BY FIRE DEPARTMENT
8. WHEEL CHOCKS SHIPPED LOOSE

CUSTOMER APPROVAL

APPROVED BY:	
DATE:	
CHASSIS DATA	TITLE
MAKE	FOR
PIERCE	DWG NO.
MODEL	
REV	DATE
	BY
	CH
	SABER FR



1250-D-1000P, 970 WATER/30 FOAM, 152" PUMPER BODY  
 (2)CROSSLAYS, DELUGE, HUSKY 3 FOAM, BOOSTER REEL

VAN BUREN FIRE DEPARTMENT  
 VAN BUREN, ARKANSAS

37918AD

JOB NO.	37918
SCALE	DATE
1:24	
DRAWN BY	13JUN22
BTH	
CHECKED BY	20JUN22
EGO	
SHEET SIZE	SHEET NO.
D	1 OF 1