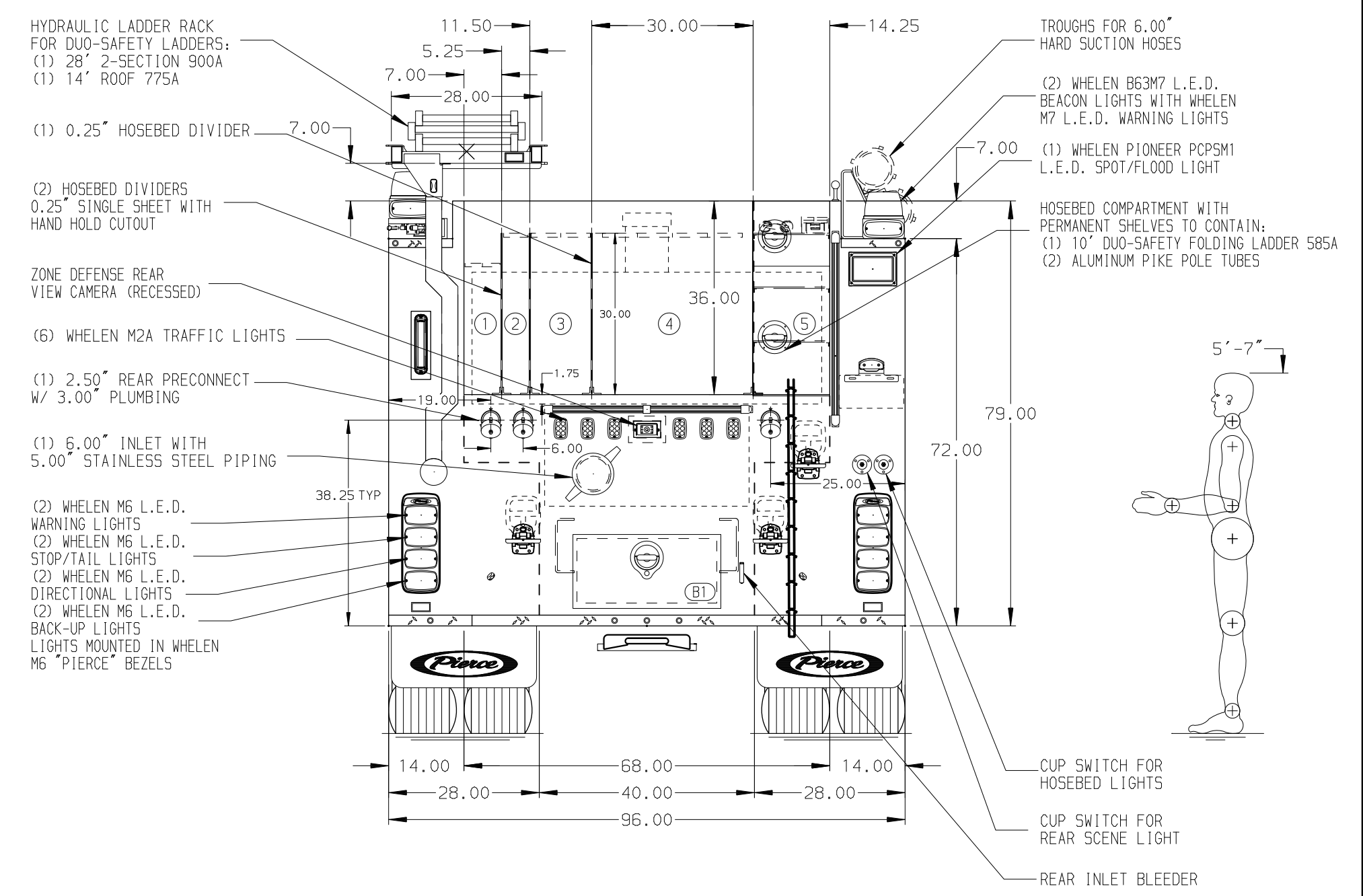


- HOSEBED CAPACITIES**
- ① - 400' OF 1.75" D.J. POLY HOSE
  - ② - 250' OF 2.50" D.J. POLY HOSE
  - ③ - 500' OF 3.00" D.J. POLY HOSE
  - ④ - 1200' OF 4.00" D.J. POLY HOSE
  - ⑤ - HI-RISE PACKS IN ENCLOSED COMPARTMENT



ALUMINUM BODY      MAXIMUM O.A.H. 119.00"      SIDE ROLL AND FRONTAL IMPACT PROTECTION

**NOTE**  
DIMENSIONS SHOWN ARE APPROXIMATE AND ARE SUBJECT TO MINOR DEVIATIONS AS MAY OCCUR OR BE NECESSARY IN CONSTRUCTION. MINOR DETAILS NOT SHOWN.

1. DEF TANK MOUNTED UNDER CAB ON THE DRIVER'S SIDE
2. BATTERY CHARGER LOCATED PER SHOP ORDER
3. BATTERY CHARGE INDICATOR LOCATED NEAR DRIVER'S SEAT RISER WITH BRACKET
4. L.E.D. LIGHT STRIP LOCATED IN HOSE BEDS PER SHOP ORDER
5. 5/8" SCUFFPLATE AROUND FUEL FILL OPENING
6. KEYPAD FOR LATCHES LOCATED PER SHOP ORDER
7. PULL STRAP ON DOORS LOCATED PER SHOP ORDER
8. ONE REVERSED HINGED DOOR LOCATED PER SHOP ORDER
9. FOUR FULL WIDTH/DEPTH ADJUSTABLE SHELVES LOCATED PER SHOP ORDER
10. THREE 5/8" SCUFFPLATES AROUND AIR BOTTLE COMPARTMENT OPENINGS
11. FOUR 5/8" SCUFFPLATES AT BOTTOM AND OUTSIDE OF CROSSLAY OPENINGS

CUSTOMER APPROVAL	
APPROVED BY:	
DATE:	
CHASSIS DATA	TITLE
MAKE	FOR
PIERCE	VIENNA VOLUNTEER FIRE DEPARTMENT
MODEL	VIENNA, VIRGINIA
VELOCITY	DWG NO.
	37936AD

Pierce MANUFACTURING INC.		JOB NO.	37936
SCALE	1:24	DATE	
DRAWN BY	JJB		180CT22
CHECKED BY	MGE		180CT22
SHEET SIZE		SHEET NO.	
D		1 OF 1	