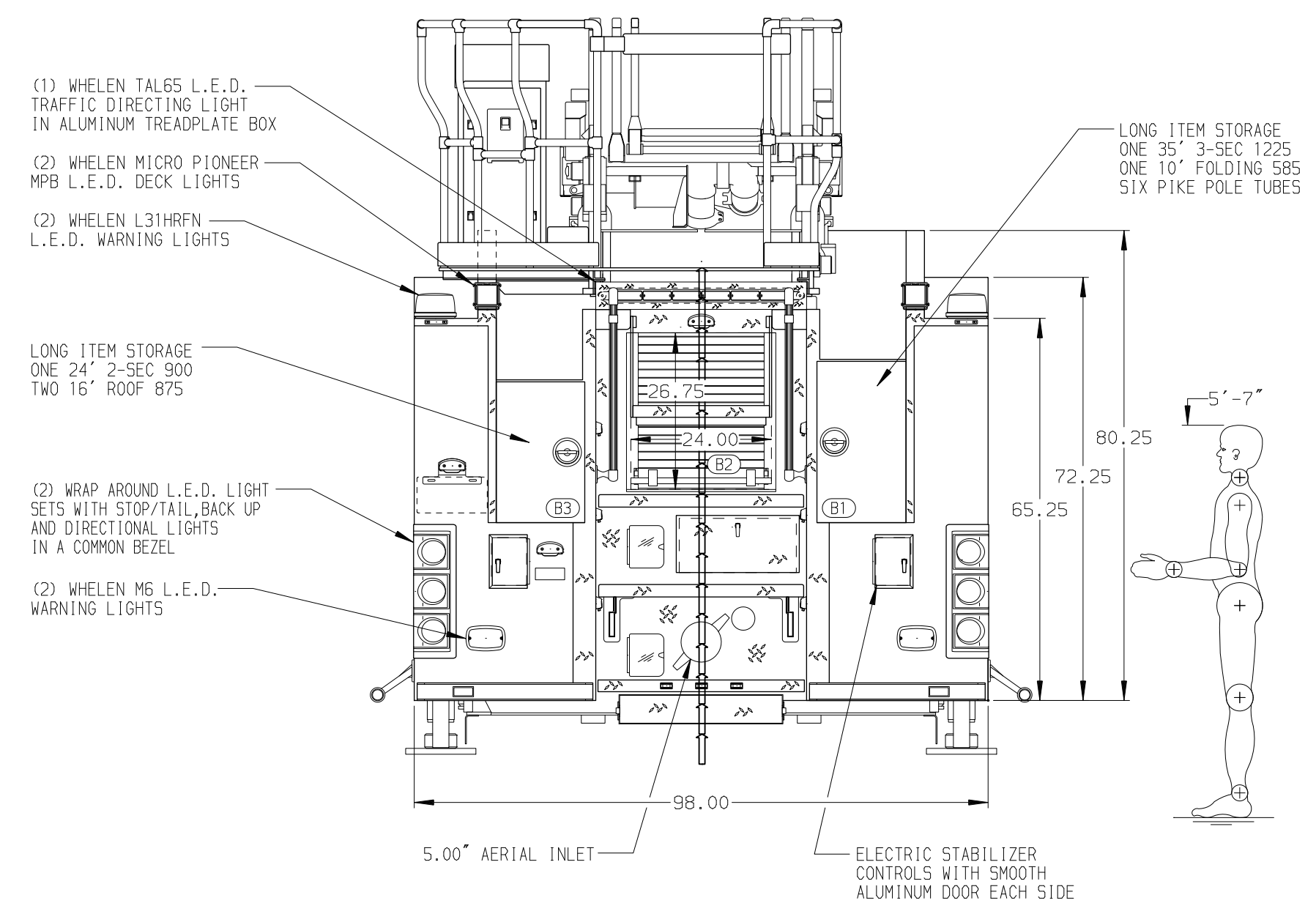
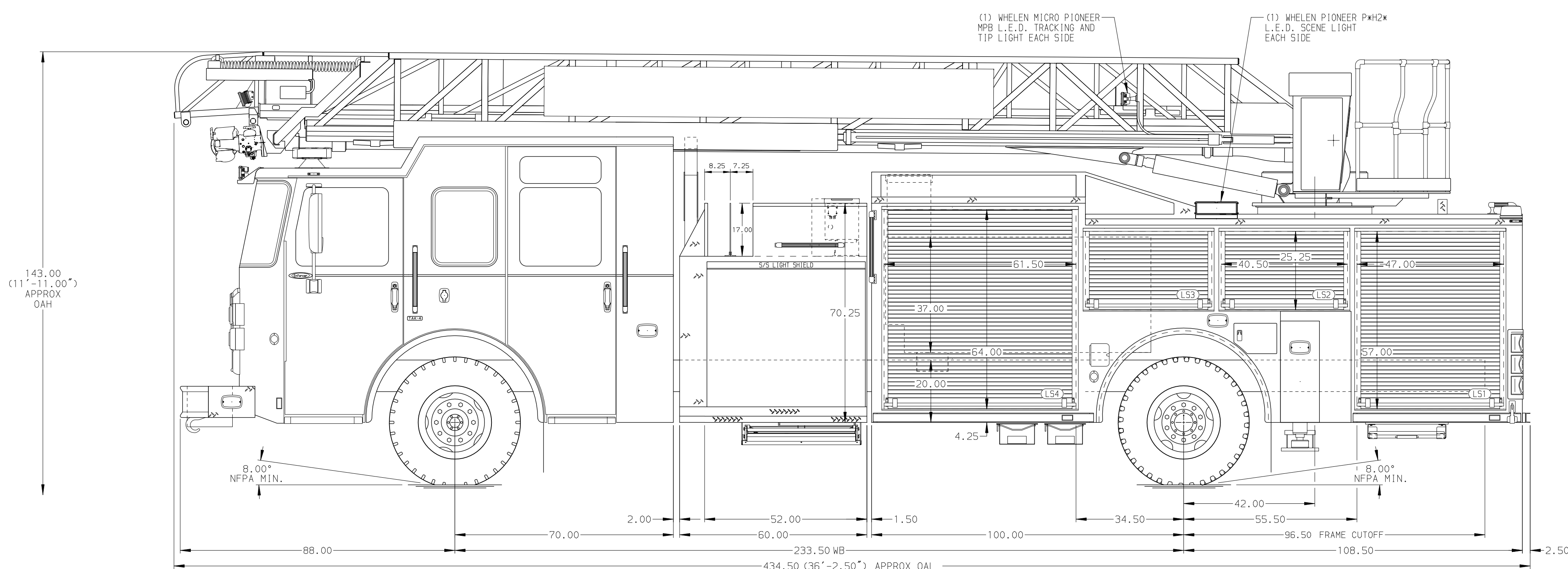


BODY 75' HAL Aluminum Body COMPT, LEFT SIDE FRONT Full Height RollUp Forward COMPT, LEFT SIDE REAR Full Height RollUp Rearward COMPT, RIGHT SIDE FRONT Full Height RollUp Forward COMPT, RIGHT SIDE REAR Full Height RollUp Rearward	WATER TANK 400 Gallon Poly Water Tank Foam System Husky 3 Single Agent Foam System Foam Cell 20 Gallon Foam Cell, Reduced Water
--	---



CHASSIS Enforcer Chassis ENGINE 450 HP Cummins L9 Engine	CAB 7010 Notched Enforcer Cab BUMPER 19" Extended Stainless Steel	AXLE, FRONT, CUSTOM 19,500 Lb TAK-4 Axle AXLE, REAR 31,000 Lb Meritor Axle	TRANSMISSION Allison 5th Gen, 3000 EV5	PUMPHOUSE 52" Control Zone Side Mount PUMP 2000 GPM Waterous CSU	CROSSLAYS, 1.50" (2) 1.50" Standard Capacity CROSSLAYS, 2.50" 2.50" Crosslay Not Required	SPEEDLAYS Speedlays Not Required GENERATOR HONDA EM5000 Gas Powered	CUSTOMER APPROVAL APPROVED BY: _____ DATE: _____		JOB NO. 37945 SCALE 1:24 DATE DRAWN BY SHU 19APR22 CHECKED BY NDA 20APR22 SHEET SIZE D SHEET NO. 1 OF 1
NOTE DIMENSIONS SHOWN ARE APPROXIMATE AND ARE SUBJECT TO MINOR DEVIATIONS AS MAY OCCUR OR BE NECESSARY IN CONSTRUCTION. MINOR DETAILS NOT SHOWN.									
1. ONE 1.50 OUTLET WITH 2.00 PIPING AND SWIVEL LOCATED IN CENTER BUMPER TRAY 2. SHORELINE RECEPTACLE WITH KUSSMAUL SUPER AUTO-EJECT LOCATED ON DRIVER SIDE OF THE CAB 3. AIR INLET WITH DISCONNECT COUPLING IN THE DRIVER SIDE STEPWELL 4. BATTERY CHARGER LOCATED PER ORDER 5. BATTERY CHARGER INDICATOR LOCATED ON DRIVER'S SEAT RISER 6. TEN ADJUSTABLE SHELVES LOCATED PER ORDER 7. FOUR FLOOR MOUNTED SLIDE-OUT TRAYS LOCATED PER ORDER 8. TRIDENT FOLDING STEPS ON AERIAL DEVICE 9. 1500 GPM HIGH FLOW WATERWAY 10. LIFTING EYE RESCUE ATTACHMENT AT AERIAL TIP 11. CIRCUIT BREAKER PANEL LOCATED PER ORDER 12. 2-WAY INTERCOM SYSTEM BETWEEN AERIAL TIP AND TURNABLE 13. 1.50" RAISED AERIAL PEDESTAL 14. NO LIMITED RETRACTION ON AERIAL DEVICE									
REV	DATE	BY	CH	ENFORCER	TITLE 75 AERIAL LADDER AND BODY ASSEMBLY (HAL) MAKE PIERCE FOR CITY OF BLYTHE FIRE DEPARTMENT BLYTHE, CA DWG NO. 37945AD				