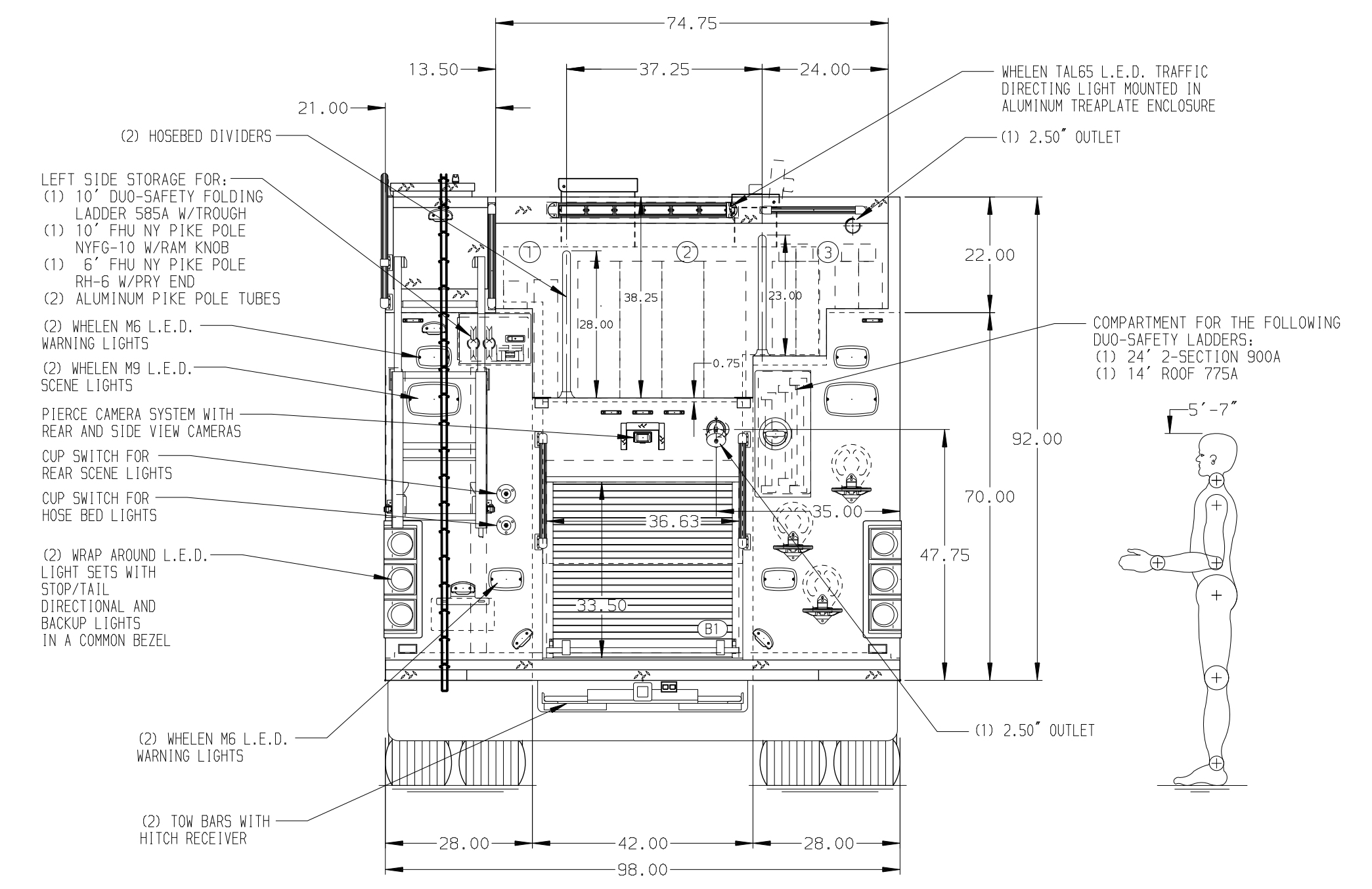
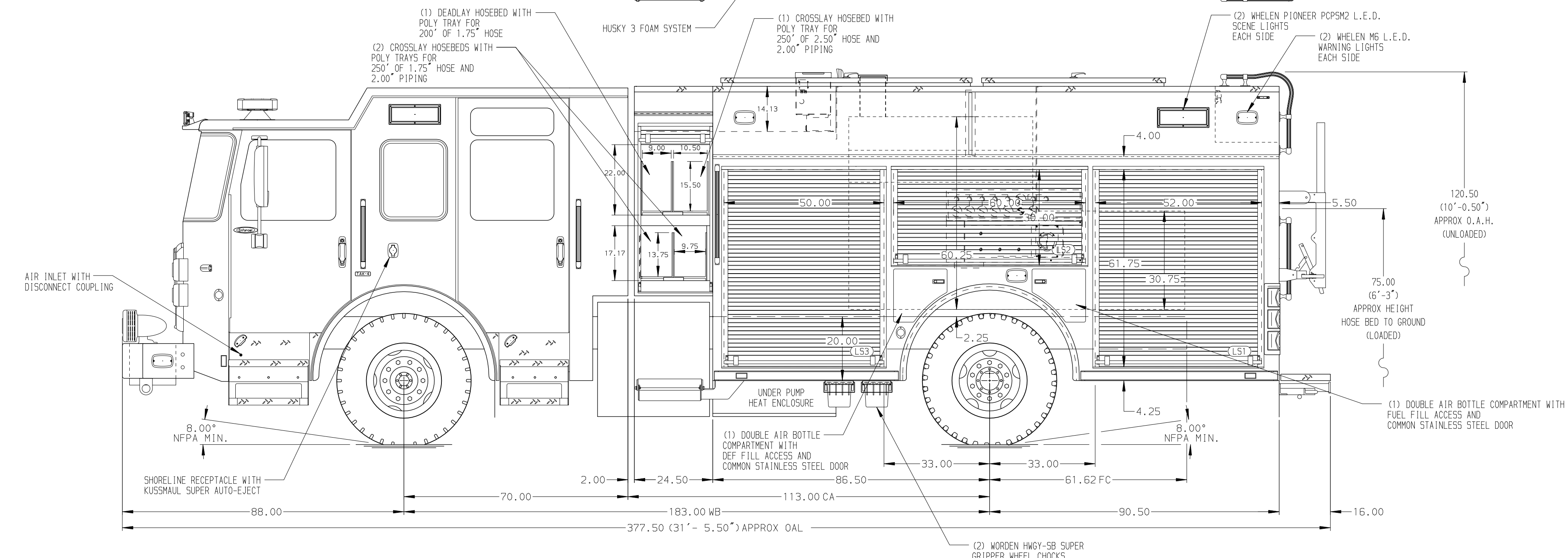


- HOSEBED CAPACITIES
- ① 200' OF 2.50" DJP HOSE
 - ② 800' OF 5.00" DJP HOSE
 - ③ 400' OF 2.50" DJP HOSE W/ 100' OF 1.75" DJP HOSE



ALUMINUM BODY

SIDE ROLL AND FRONTAL IMPACT PROTECTION

NOTE
DIMENSIONS SHOWN ARE APPROXIMATE AND ARE SUBJECT TO MINOR DEVIATIONS AS MAY OCCUR OR BE NECESSARY IN CONSTRUCTION. MINOR DETAILS NOT SHOWN.

1. BATTERY CHARGER LOCATED BEHIND DRIVER SEAT
2. BATTERY CHARGER INDICATOR LOCATED ON DRIVER'S SEAT RISER
3. DUAL L.E.D. LIGHT STRIPS LOCATED IN HOSE BED
4. TWO ELASTIC PULL STRAPS ON DOORS IN COMPARTMENTS PER ORDER
5. SEVEN DUAL L.E.D. LIGHT STRIPS LOCATED ON EACH SIDE OF COMPARTMENT DOOR LOCATED PER ORDER
6. SIX FULL WIDTH/DEPTH ADJUSTABLE SHELVES LOCATED IN COMPARTMENTS PER ORDER
7. ONE FLOOR MOUNTED SLIDE-OUT TRAY LOCATED IN COMPARTMENT PER ORDER
8. ONE TECH 3-DRAWER ASSEMBLY LOCATED IN COMPARTMENT PER ORDER
9. ONE SWING-OUT ALUMINUM TOOL BOARD LOCATED IN COMPARTMENT PER ORDER
10. ONE REINFORCED FLOOR LOCATED IN COMPARTMENT PER ORDER
11. HONDA EU20001 GENERATOR (STF)
12. TWO 120V 7-PLACE RECEPTACLE STRIPS MOUNTED IN CAB PER ORDER
13. ONE 120V RECEPTACLE LOCATED IN COMPARTMENT PER ORDER
14. TWO BREATHING AIR CASCADE SYSTEM 6000 CYLINDERS LOCATED IN LEFT SIDE HATCH COMPARTMENT
15. SPACESAVER AIR CONTROL PANEL FOR BREATHING AIR SYSTEM LOCATED PER ORDER
16. SPACESAVER FILL ENCLOSURE MODEL 300H LOCATED IN COMPARTMENT PER ORDER

REV	DATE	BY	CH	ENFORCER
05SEP23	SAM	JLL		PIERCE
01AUG23	SAM	AST		MODEL

		JOB NO.	37971
		SCALE	DATE
TITLE	1500-D-780P, 750G WATER, 30G FOAM, 177" PUC RESCUE BODY (3) CROSSLAYS, DELUGE, CASCADE SYSTEM	DRAWN BY	26APR23
FOR	EAU CLAIRE FIRE AND RESCUE EAU CLAIRE, WISCONSIN	CHECKED BY	26ARP23
DWG NO.	37971AD	SHEET SIZE	SHEET NO.
		D	1 OF 1