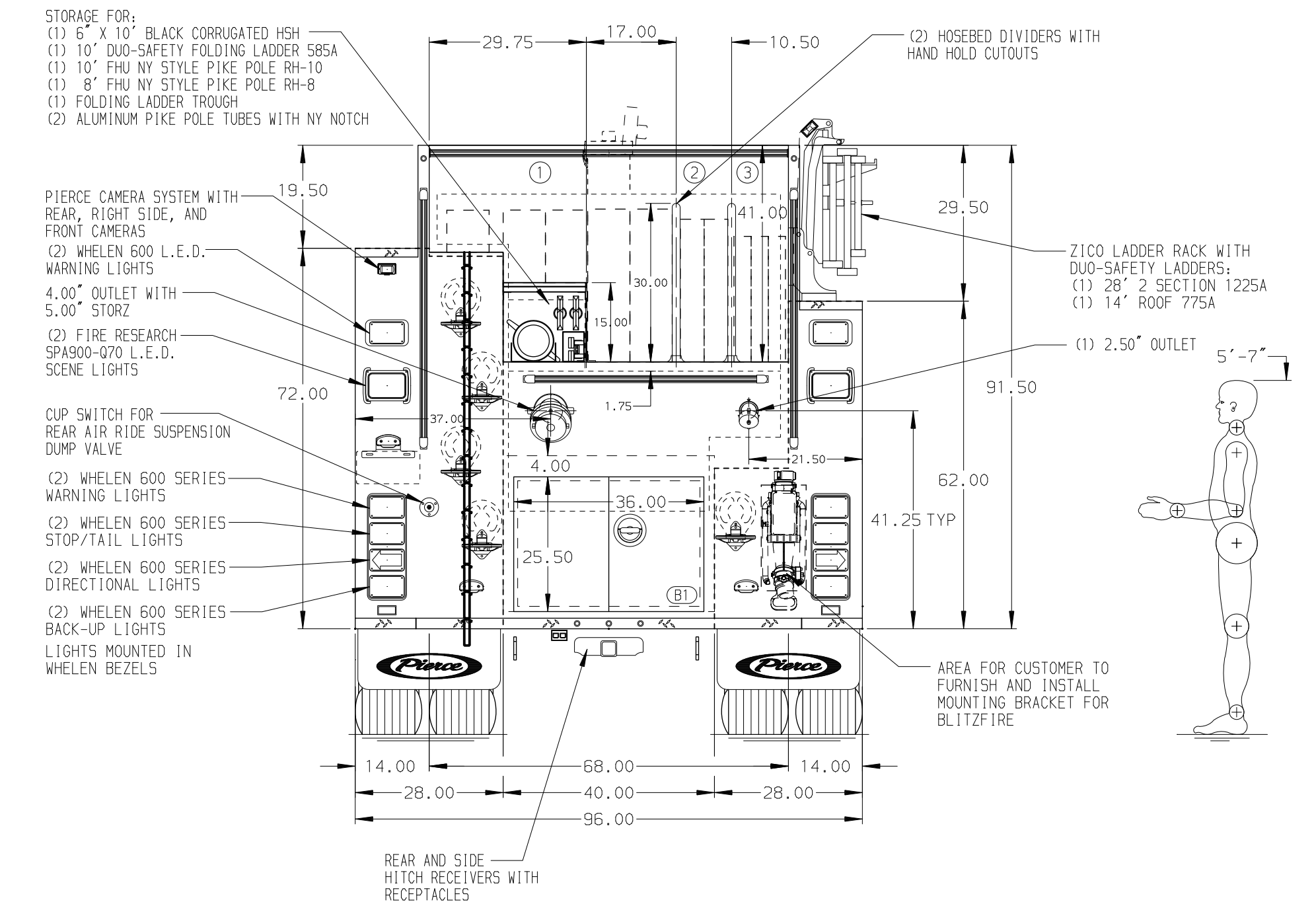


- HOSEBED CAPACITIES**
- ① - 950' OF 5.00" DJP HOSE
 - ② - 800' OF 2.50" DJP HOSE
 - ③ - 800' OF 1.75" DJP HOSE



ALUMINUM BODY

NOTE
DIMENSIONS SHOWN ARE APPROXIMATE AND ARE SUBJECT TO MINOR DEVIATIONS AS MAY OCCUR OR BE NECESSARY IN CONSTRUCTION. MINOR DETAILS NOT SHOWN.

1. MOUNTING BRACKETS FOR WHEEL CHOCKS SAC-44 PROVIDED FORWARD OF REAR AXLE ON DRIVER'S SIDE. CHOCKS PROVIDED BY CUSTOMER.
2. SIX DRIP PAN GUARDS FOR ROLL-UP DOORS LOCATED PER ORDER
3. SEVEN DUAL L.E.D. LIGHT STRIPS LOCATED IN COMPARTMENTS PER ORDER
4. EIGHT FULL WIDTH/DEPTH ADJUSTABLE SHELVES LOCATED IN COMPARTMENT PER ORDER
5. ONE CTECH 3-DRAWER ASSEMBLY LOCATED IN COMPARTMENT PER ORDER
6. TWO SWING-OUT TOOL BOARDS WITH PEGBOARD PATTERN LOCATED IN COMPARTMENT PER ORDER
7. THREE SLIDE-OUT TOOLBOARDS LOCATED IN COMPARTMENTS PER ORDER
8. TWO VERTICAL PARTITIONS LOCATED IN COMPARTMENT PER ORDER
9. TRANSVERSE REAR COMPARTMENT PARTITION BETWEEN B1/L51 AND B1/R51
10. ONE SPECIAL HEIGHT VERTICAL PARTITION LOCATED PER ORDER
11. ONE HORIZONTAL DIVIDER LOCATED IN COMPARTMENT PER ORDER
12. TWO PEGBOARDS MOUNTED ON THE BACK WALLS LOCATED IN COMPARTMENTS PER ORDER
13. HOT WATER HEATER IN PUMP COMPARTMENT
14. INVERTER/BATTERY CHARGER LOCATED IN COMPARTMENT PER ORDER
15. FOUR 120V DUPLEX RECEPTACLES LOCATED IN BODY COMPARTMENT PER ORDER
16. ONE HYDRAULIC TOOL MOUNTING TURN TABLE LOCATED IN COMPARTMENT PER ORDER

				Pierce MANUFACTURING INC.		JOB NO.	37980
						SCALE	DATE
						1:24	
				CHASSIS DATA		TITLE	1500-D-1025P, 1000G WATER W/25G FOAM, 171" BODY
				MAKE		FOR	(2) SPEELAYS, ZICO LADDER RACK, LIGHT TOWER
				PIERCE			HORICON FIRE DEPARTMENT
				MODEL			HORICON, WISCONSIN
				ENFORCER		DWG NO.	37980AD
09NOV23	SAM	DTJ				CHECKED BY	26APR23
25AUG23	SAM	PHA				SHEET SIZE	SHEET NO.
04MAY23	SAM	CZA				D	1 OF 1
REV	DATE	BY	CH				