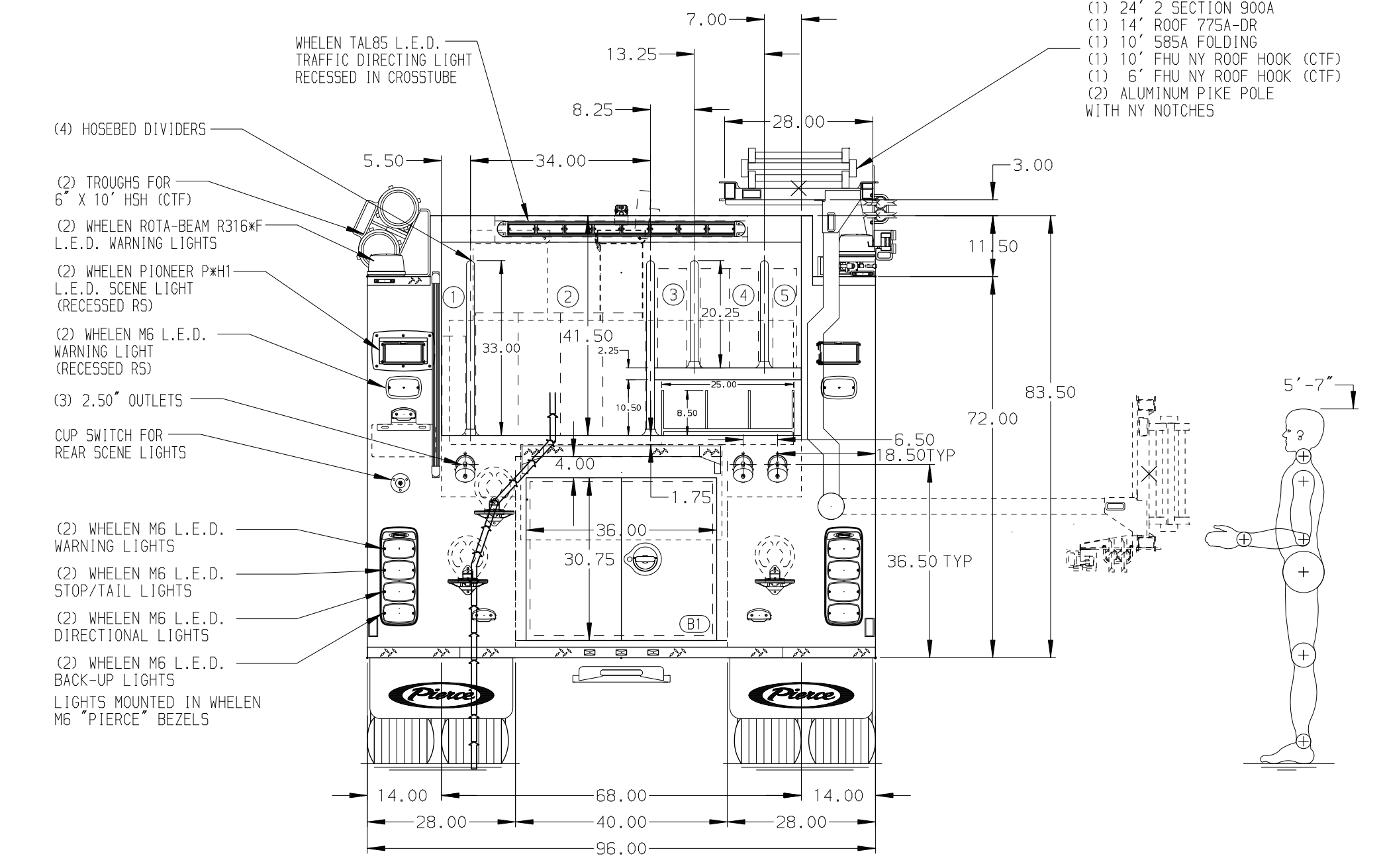


- HOSEBED CAPACITIES**
- ① 200' OF 2.50" D.J. POLY HOSE
 - ② 1000' OF 5.00" D.J. POLY HOSE
 - ③ 200' OF 3.00" D.J. POLY HOSE
 - ④ 400' OF 3.00" D.J. POLY HOSE
 - ⑤ 200' OF 2.50" D.J. POLY HOSE

- DUO-SAFETY LADDERS:**
- (1) 24' 2 SECTION 900A
 - (1) 14' ROOF 775A-DR
 - (1) 10' S85A FOLDING
 - (1) 10' FHU NY ROOF HOOK (CTF)
 - (1) 6' FHU NY ROOF HOOK (CTF)
 - (2) ALUMINUM PIKE POLE WITH NY NOTCHES



ALUMINUM BODY

NOTE
DIMENSIONS SHOWN ARE APPROXIMATE AND ARE SUBJECT TO MINOR DEVIATIONS AS MAY OCCUR OR BE NECESSARY IN CONSTRUCTION. MINOR DETAILS NOT SHOWN.

- 1. WHEEL CHOCKS AND MOUNTING BRACKETS PROVIDED BY FIRE DEPARTMENT
- 2. AIR OUTLET WITH SHUT OFF VALVE AT BOTH PUMP PANELS
- 3. L.E.D. LIGHT STRIPS IN FRONT OF HOSE BED
- 4. DUAL L.E.D. LIGHT STRIPS IN CARGO AREA
- 5. VANNER LIFELINE INVERTER/BATTERY CHARGER LOCATED BEHIND THE DRIVER'S SEAT
- 6. TWO 120V RECEPTACLES LOCATED IN INTERIOR CAB PER ORDER
- 7. FRC WLA 300-400 WATER LEVEL GAUGE ON PUMP OPERATOR'S PANEL

				CHASSIS DATA	TITLE	1500-D-530P, 500G WATER/30G FOAM, 152" FH FDLR	JOB NO.	38032
				MAKE	FOR	(2) X-LAYS, HYDRAULIC LADDER RACK, DELUGE	SCALE	1:24
				PIERCE	FOR	ST. PETERSBURG	DATE	
				MODEL	FOR	ST. PETERSBURG, FLORIDA	DRAWN BY	BTH
				IMPEL	DWG NO.	38032AD-SH1	CHECKED BY	JJR
REV	DATE	BY	CH				SHEET SIZE	D
							SHEET NO.	1 OF 1