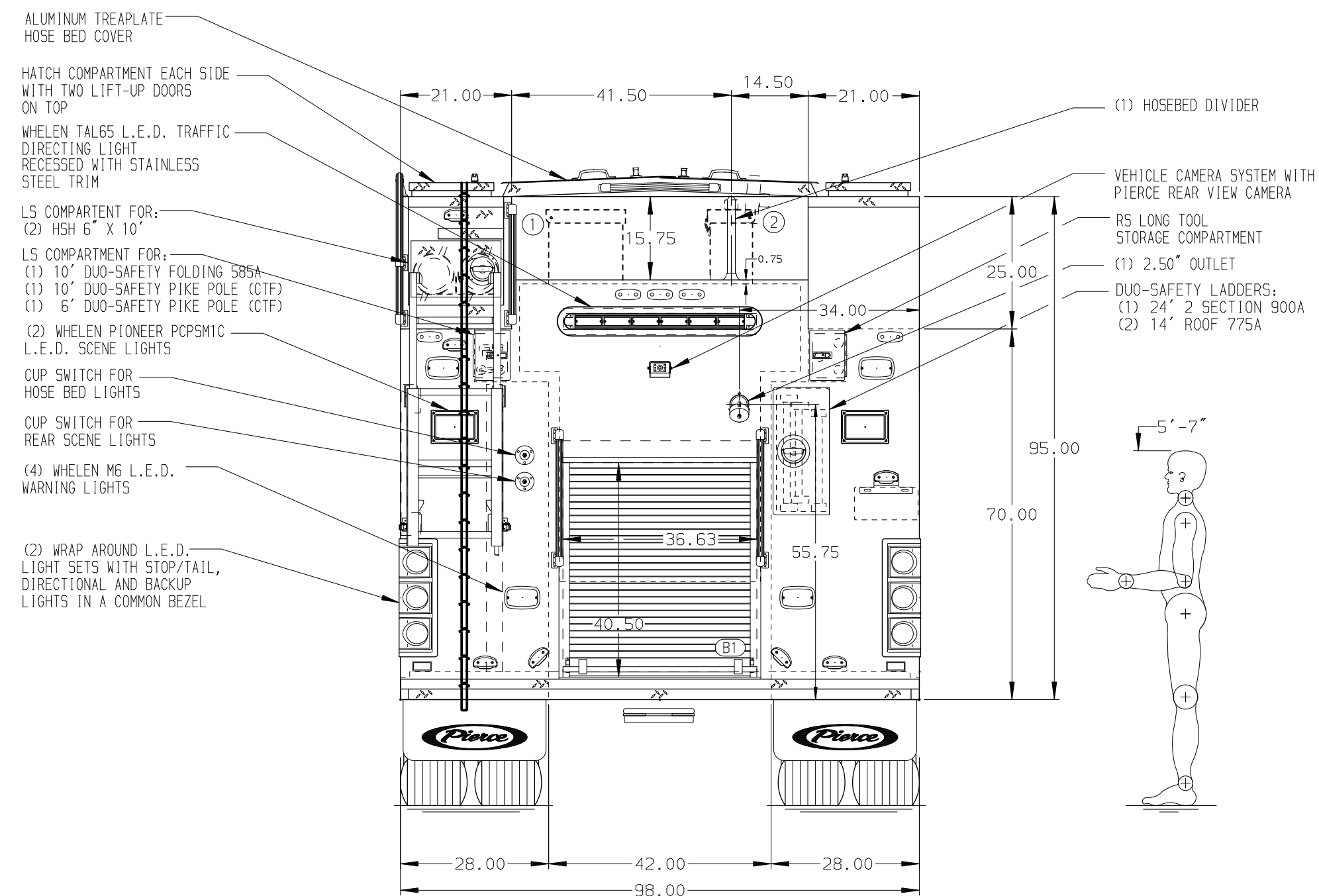
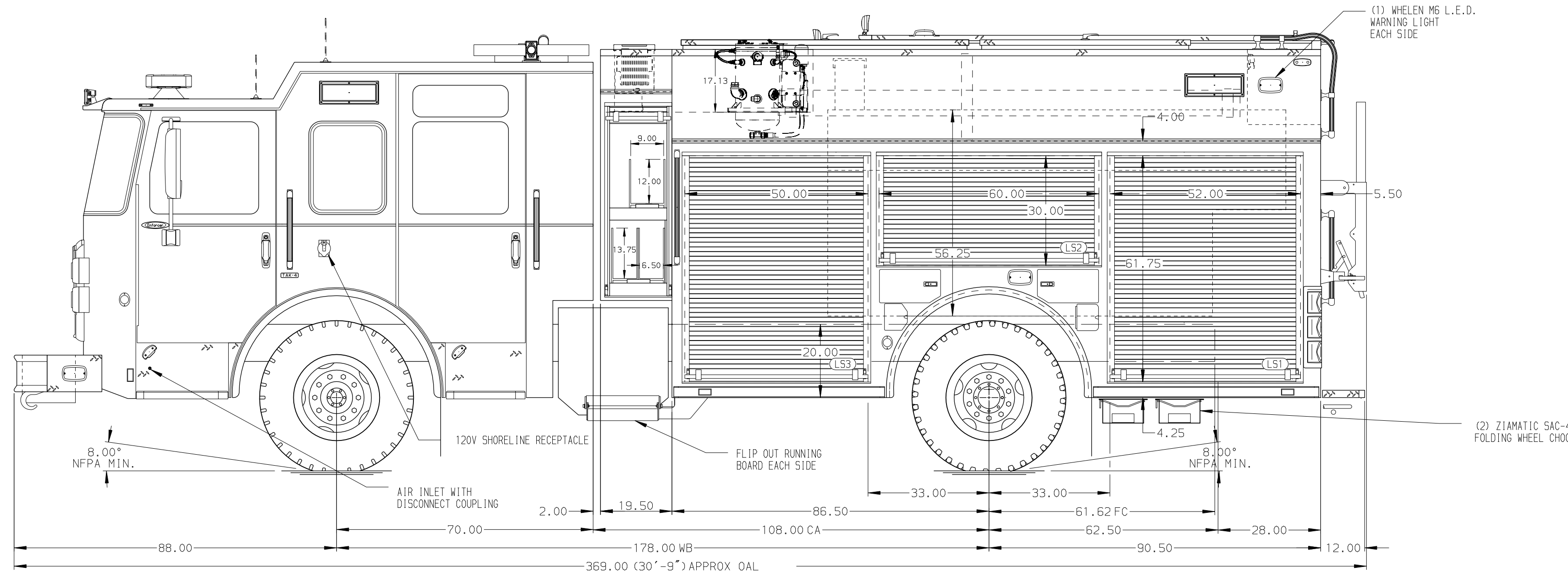


HOSEBED CAPACITIES
 ① 900' OF 5.00" SUPPLY LINE HOSE
 ② 500' OF 2.50" D.J. HOSE



ALUMINUM BODY

SIDE ROLL AND FRONTAL IMPACT PROTECTION

NOTE
 DIMENSIONS SHOWN ARE APPROXIMATE AND ARE SUBJECT TO MINOR DEVIATIONS AS MAY OCCUR OR BE NECESSARY IN CONSTRUCTION. MINOR DETAILS NOT SHOWN.

1. BATTERY CHARGER LOCATED BEHIND DRIVER SEAT
2. BATTERY CHARGER INDICATOR LOCATED ON DRIVER'S SEAT RISER
3. DUAL L.E.D. LIGHT STRIPS LOCATED IN HOSE BED
4. EIGHT FULL WIDTH/DEPTH ADJUSTABLE SHELVES LOCATED PER ORDER
5. TWO FLOOR MOUNTED SLIDE-OUT TRAYS LOCATED PER ORDER
6. ONE ADJUSTABLE VERTICAL PARTITION LOCATED PER ORDER

CUSTOMER APPROVAL			
APPROVED BY:			
DATE:			
CHASSIS DATA	TITLE	1500-D-1020, 1000G WATER W/20G FOAM, 177" PUC RESCUE	
MAKE	FOR	(3) CROSSLAYS, HUSKY 3, DELUGE, LADDERS THROUGH BODY	
PIERCE		DURANGO FIRE AND RESCUE AUTHORITY	
MODEL		FRONT RANGE FIRE APPARATUS, LTD	
ENFORCER	DWG NO.	38044AD	

		JOB NO.	38044
		SCALE	1:24
		DATE	
		DRAWN BY	LME
		CHECKED BY	CZA
		SHEET SIZE	D
		SHEET NO.	1 OF 1