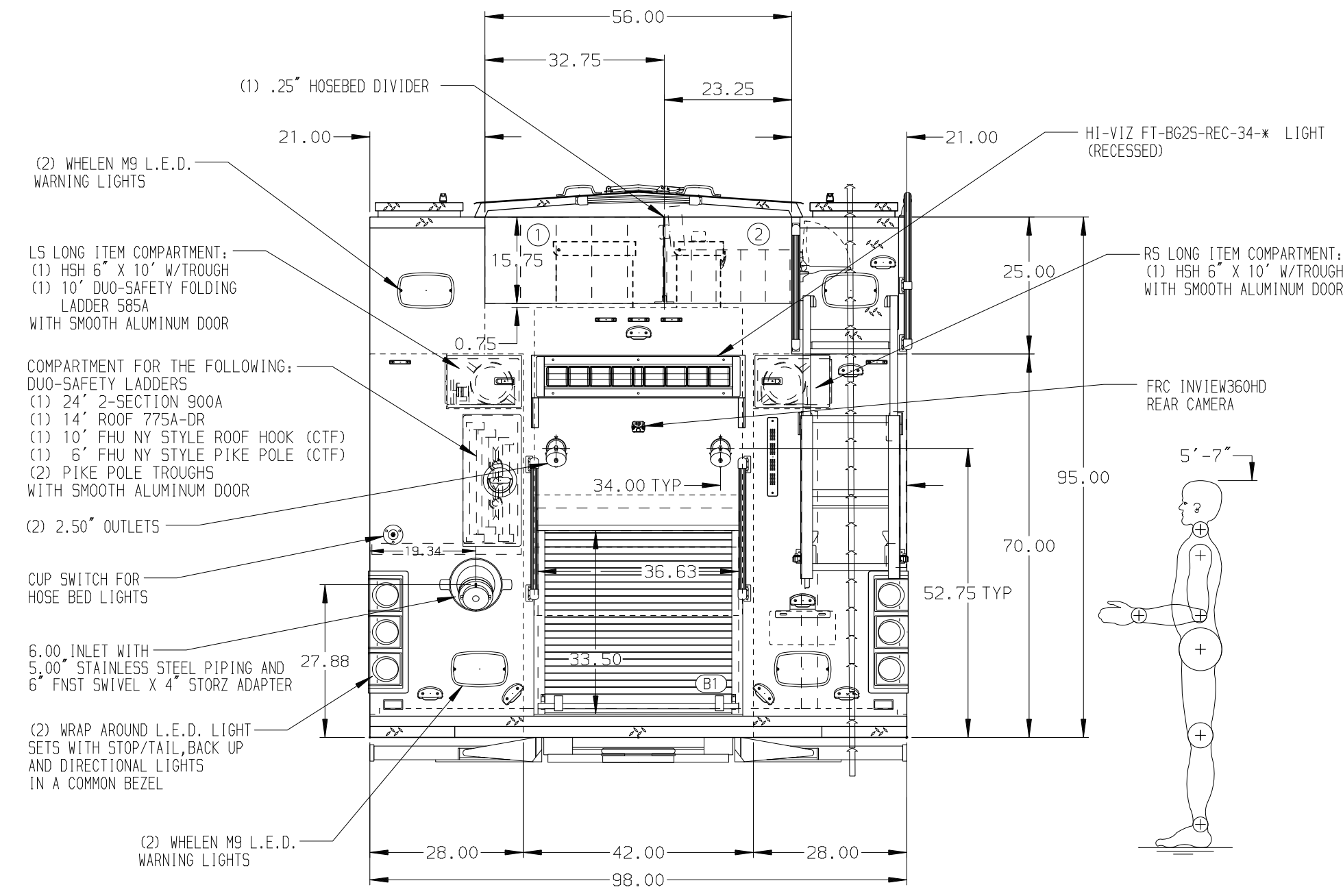


HOSEBED CAPACITIES
 ① 1000' OF 4.00" D.J. POLY HOSE
 ② 600' OF 2.50" D.J. POLY HOSE



ALUMINUM BODY

SIDE ROLL AND FRONTAL IMPACT PROTECTION

NOTE
 DIMENSIONS SHOWN ARE APPROXIMATE AND ARE SUBJECT TO MINOR DEVIATIONS AS MAY OCCUR OR BE NECESSARY IN CONSTRUCTION. MINOR DETAILS NOT SHOWN.

- ONSPOT AUTOMATIC TIRE CHAINS TO BE PROVIDED AT REAR
- DUAL L.E.D. LIGHT STRIPS LOCATED IN HOSE BED
- FOUR FULL WIDTH/DEPTH ADJUSTABLE SHELVES IN COMPARTMENTS PER SHOP ORDER
- ONE ADJUSTABLE SLIDE-OUT TRAY IN COMPARTMENT PER SHOP ORDER
- ONE ADJUSTABLE SLIDE-OUT TRAY IN COMPARTMENT PER SHOP ORDER
- THREE ADJUSTABLE TILTING SLIDE-OUT TRAYS IN COMPARTMENTS PER SHOP ORDER
- TWO FLOOR MOUNTED SLIDE-OUT TRAYS IN COMPARTMENTS PER SHOP ORDER
- ONE SWING-OUT ALUMINUM TOOL BOARD IN COMPARTMENT PER SHOP ORDER
- ONE ALUMINUM SWING-OUT TOOLBOARD IN COMPARTMENT PER SHOP ORDER
- ONE HORIZONTAL PARTITION IN COMPARTMENT PER SHOP ORDER
- THREE ALUMINUM MOUNTING PLATES IN COMPARTMENTS PER SHOP ORDER
- ANGLED ALUMINUM TREADPLATE FLOOR FOR CRIBBING LOCATED IN COMPARTMENT PER SHOP ORDER

- PAC TRAC ON BACK WALL OF COMPARTMENTS PER SHOP ORDER
- ONE RACK FOR (3) AIR BAGS IN COMPARTMENT PER SHOP ORDER
- MOUNTING RACK WITH STRAPS FOR (5) FIRE EXTINGUISHERS LOCATED PER SHOP ORDER
- NORCOLD AR7518B REFRIGERATOR WITH ADJACENT A/C AND D/C OUTLET LOCATED PER SHOP ORDER
- 120V DUPLEX RECEPTACLE LOCATED PER SHOP ORDER
- AIR OUTLET W/SHUTOFF VALVE LOCATED AT DRIVER'S SIDE PUMP PANEL
- BATTERY CHARGER LOCATED ON TOP OF DRIVER'S SIDE EMS CABINET
- DUAL L.E.D. LIGHT STRIPS LOCATED IN HOSE BED
- L.E.D. LIGHT STRIPS LOCATED IN HATCH COMPARTMENTS

REV	DATE	BY	CH	ENFORCER
300CT23	ARI	AST	MAKE	
030CT23	BTH	AST	PIERCE	
07SEP23	BTH	AST	MODEL	

TITLE	FOR	DWG NO.
CHASSIS DATA	WILLIAMSON COUNTY FRANKLIN, TENNESSEE	38060AD-SH1

Pierce MANUFACTURING INC.

JOB NO. 38060
 SCALE 1:24
 DATE
 DRAWN BY ARI
 CHECKED BY EGO
 SHEET SIZE D
 SHEET NO. 1 OF 2