

PUMPER BODY
Medium Aluminum 2nd Gen Pumper

CHASSIS
Enforcer Chassis

CHASSIS AXLE, FRONT, CUSTOM
19,500 Lb TAK-4 Axle

AXLE, REAR
27,000 Lb Dana Axle

ENGINE
450 HP Cummins L9 Engine

TRANSMISSION
Allison 5th Gen, 3000 EVS P

BUMPER
19" Extended Stainless Steel

CAB
6010 Enforcer Cab

BODY WATER TANK
1000 Gallon Poly Water Tank

COMPT, PUMPER, REAR
37.75" FF RollUp Rear Compt

COMPT, PUMPER, LEFT SIDE
152" RollUp Full Height Front & Rear FDLR

COMPT, PUMPER, RIGHT SIDE
152" RollUp Full Height Front & Rear FDLR

FIRE SUPPRESSION PUMPHOUSE
42" Control Zone Top Mount

PUMP
1250 GPM Waterous CS

CROSSLAYS, 1.50"
1.50" Crosslays Not Required

CROSSLAYS, 2.50"
2.50" Crosslay Not Required

SPEEDLAYS
(2) 1.50" W/Tray Std. Capacity

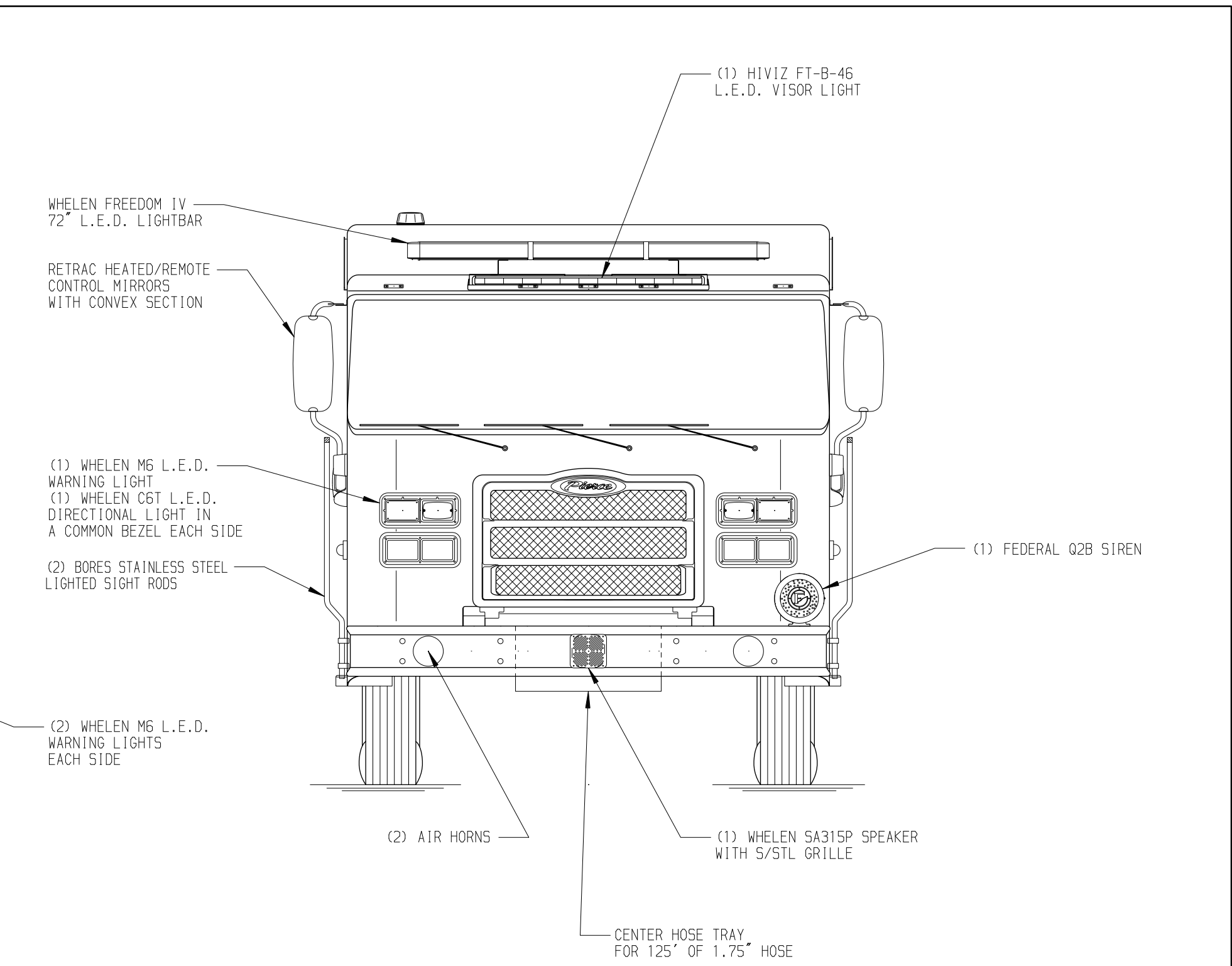
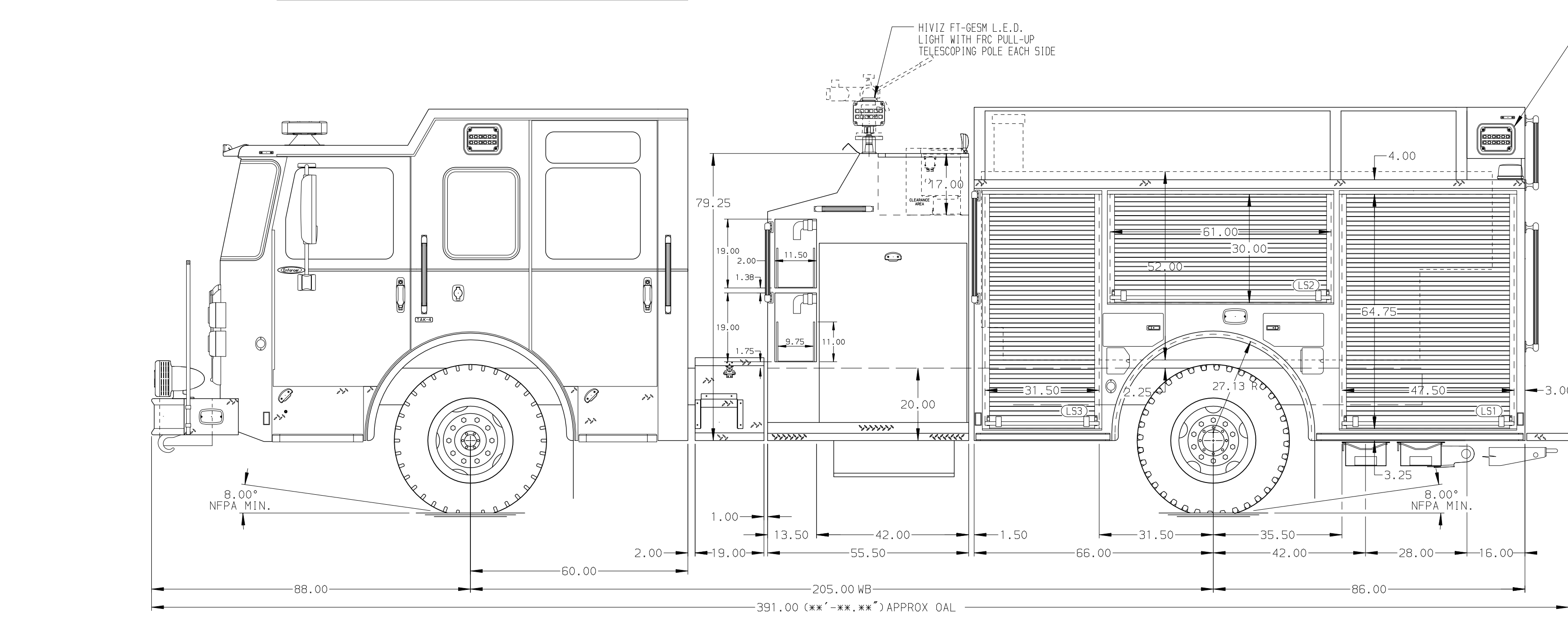
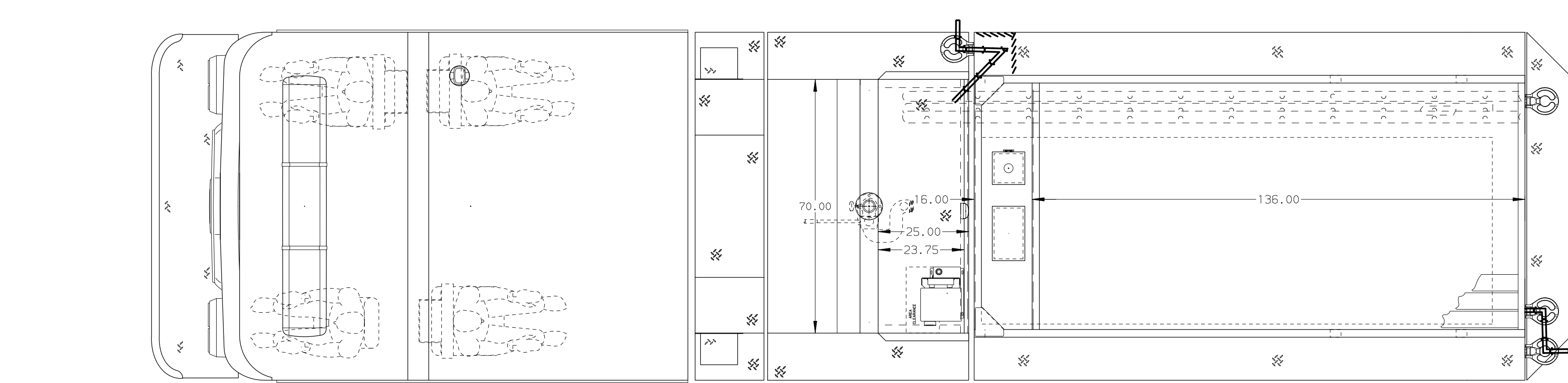
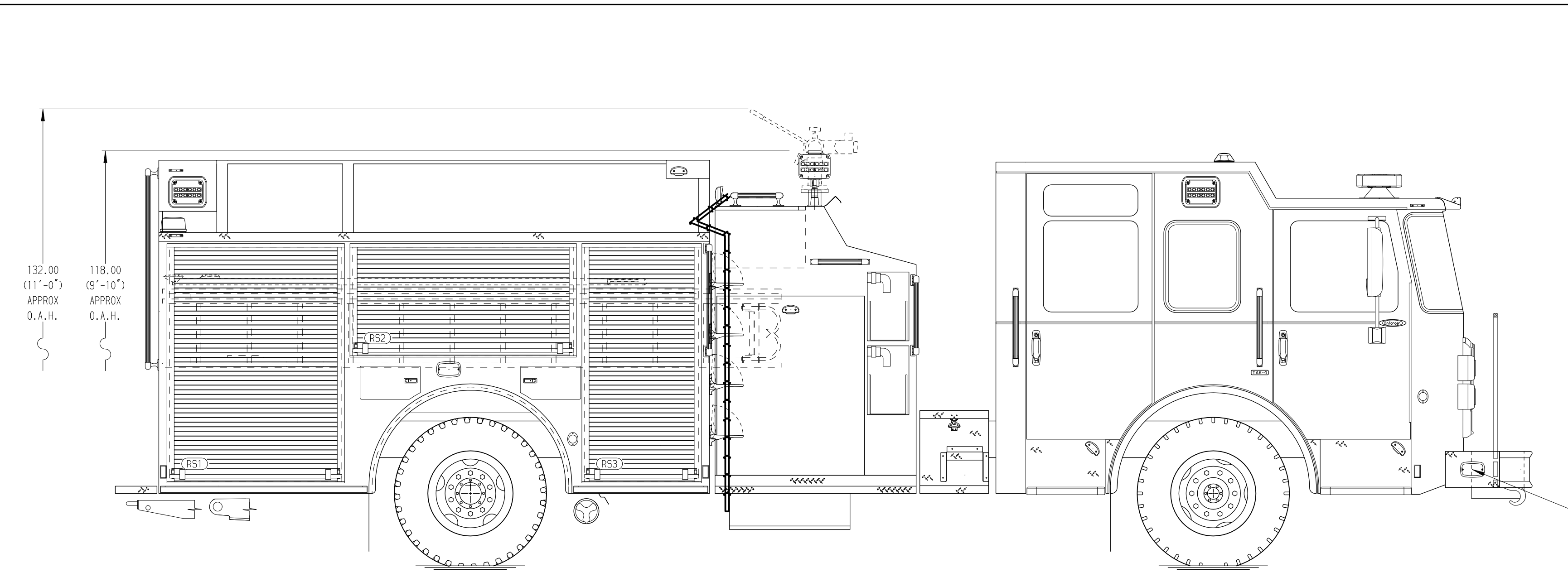
GENERATOR
Generator Not Required

Foam System
Husky 3 Single Agent Foam System

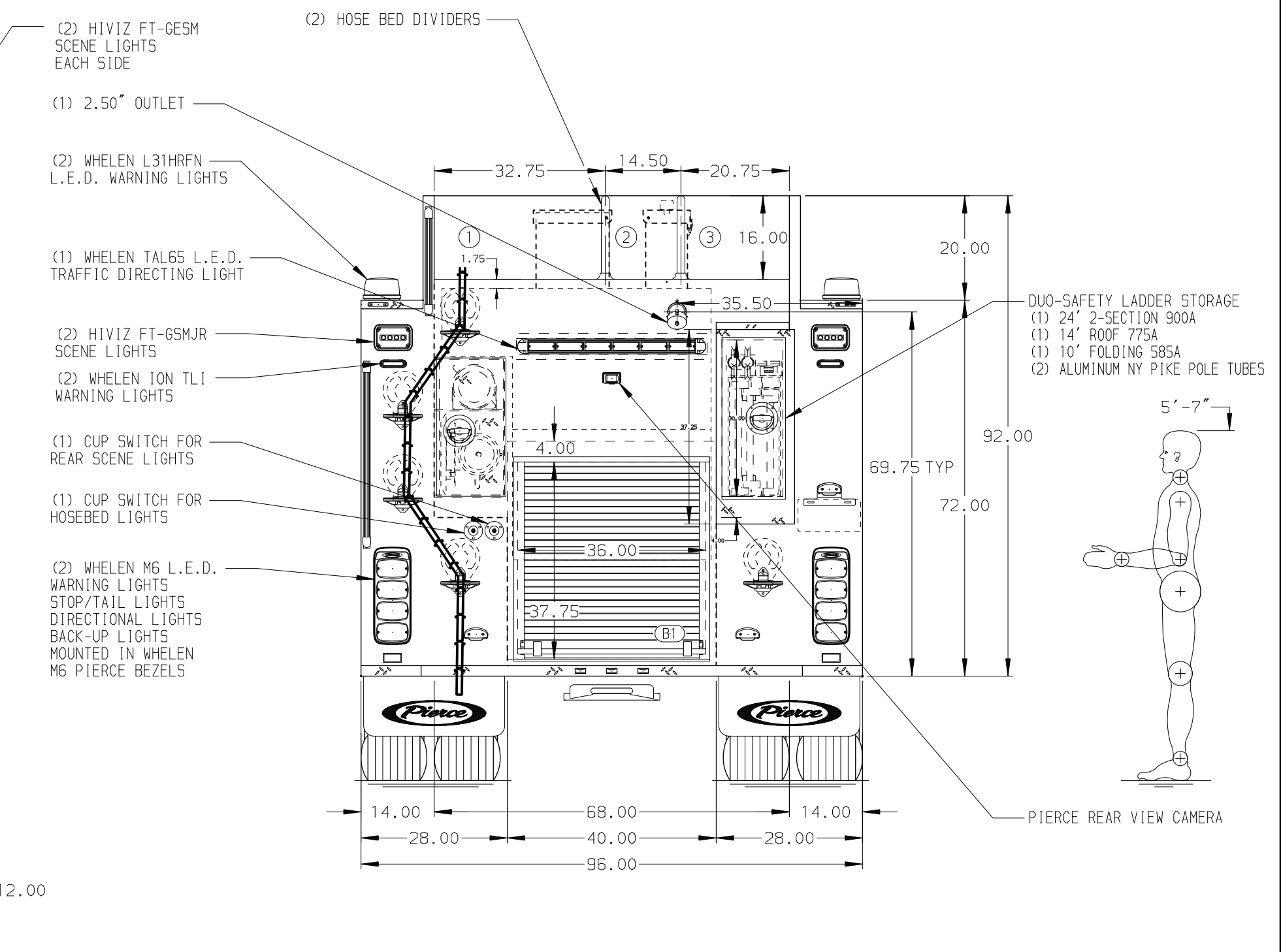
Foam Cell
20 Gallon Foam Cell, Not Reduced Water

Frontal Impact Protection

NOTE
DIMENSIONS SHOWN ARE APPROXIMATE AND ARE SUBJECT TO MINOR DEVIATIONS AS MAY OCCUR OR BE NECESSARY IN CONSTRUCTION. MINOR DETAILS NOT SHOWN.



HOSEBED CAPACITY	
BED 1	500' OF 5.00" D.J. POLY HOSE
BED 2	300' OF 1.75" D.J. POLY HOSE
BED 3	300' OF 2.50" D.J. POLY HOSE



MAXIMUM O.A.H. 120.00" MAXIMUM O.A.L. 408.00"

CUSTOMER APPROVAL			
APPROVED BY:			
DATE:			
REV	DATE	BY	CH

Pierce MANUFACTURING INC.		JOB NO.	38072
		SCALE	1:24
		DATE	
TITLE	Pierce Pumper Approval Drawing	DRAWN BY	MMF
MAKE		CHECKED BY	COL
FOR	Lakeland Fire Department	SHEET SIZE	SHEET NO.
MODEL			
DWG NO.	38072AD		1 OF 1