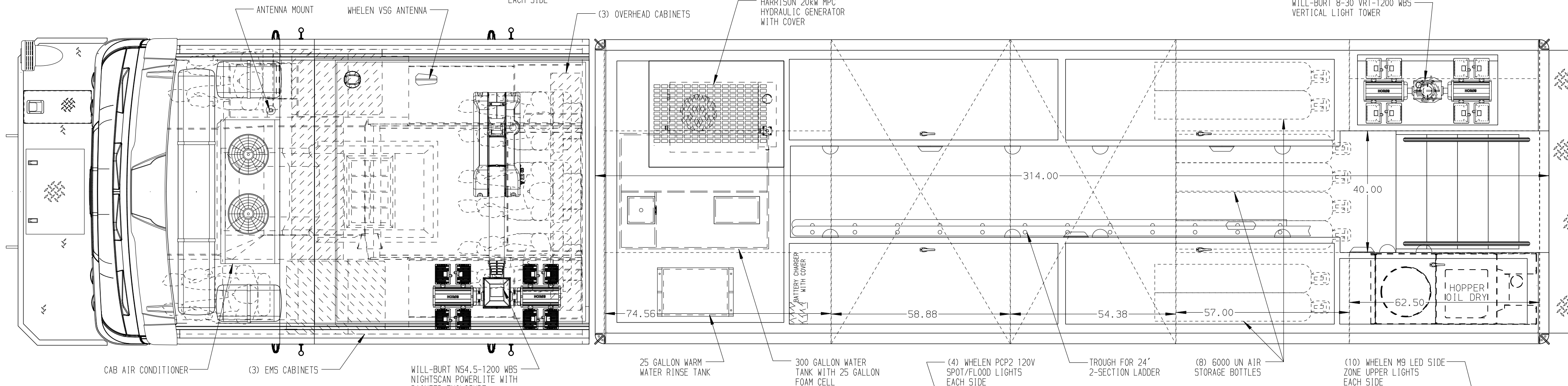
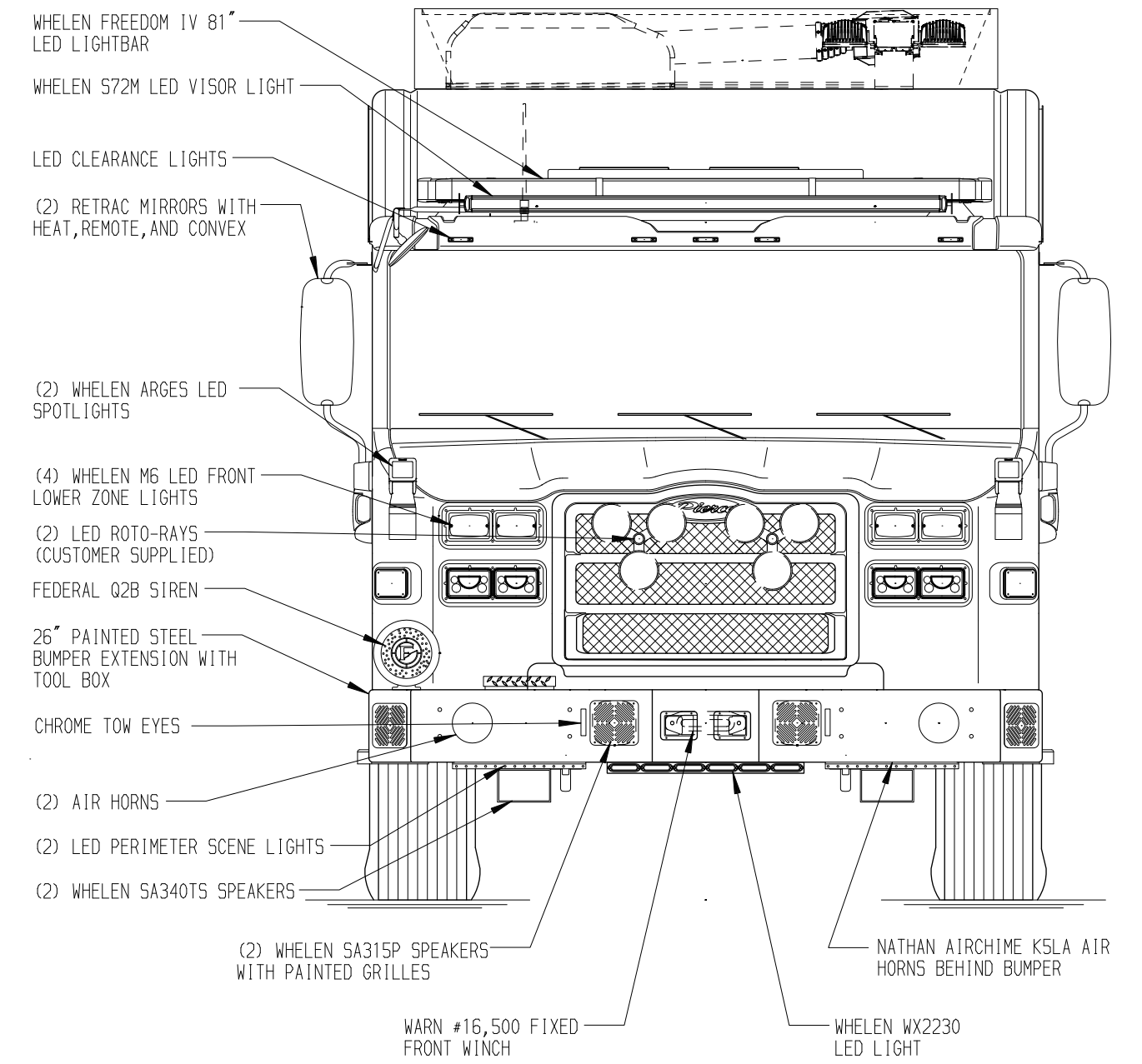
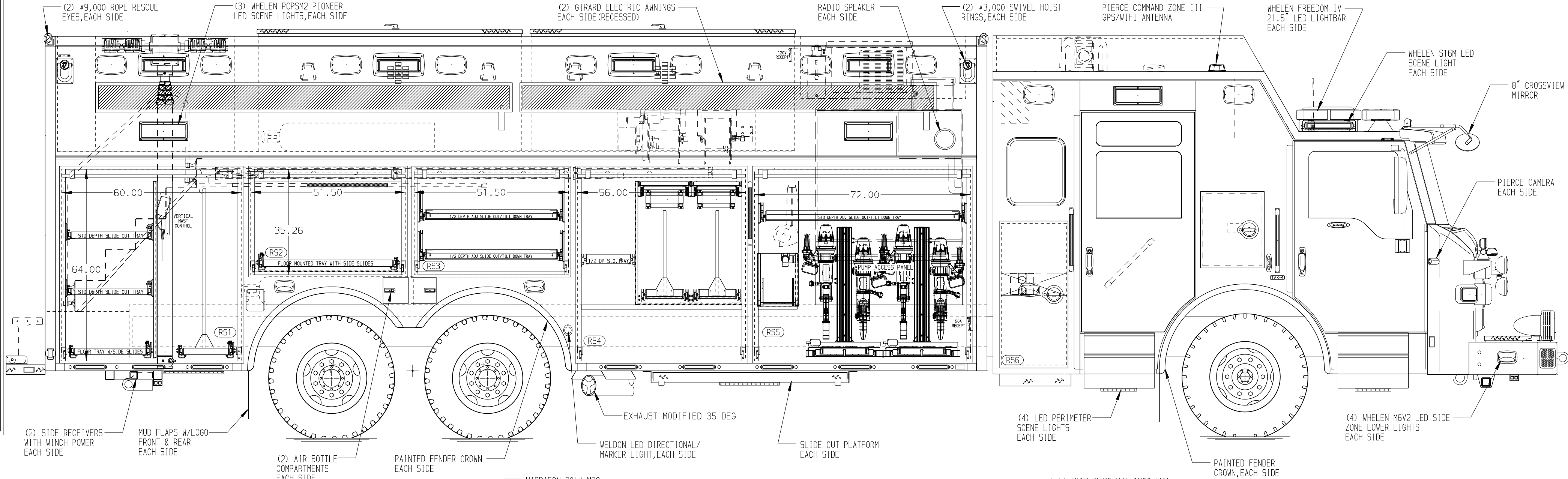


RIGHT SIDE COMPARTMENTS CONTAIN THE FOLLOWING:

- COMPARTMENT R51 CONTAINS:
 - (2) STD DEPTH ADJ SLIDE OUT TRAYS
 - (1) VERTICAL COMPARTMENT DIVIDER
 - (1) FLOOR MOUNTED TRAY W/SIDE SLIDES WITH TOOLBOARD
 - (1) FLOOR MOUNTED TRAY W/SIDE SLIDES
 - VERTICAL LIGHT TOWER CONTROLS
- COMPARTMENT R52 CONTAINS:
 - (1) STD DEPTH FLOOR MTD TRAY W/SIDE SLIDES
- COMPARTMENT R53 CONTAINS:
 - (2) 1/2 DEPTH ADJ SLIDE OUT/TILT TRAYS
- COMPARTMENT R54 CONTAINS:
 - (1) HORIZONTAL FLOOR EXTENSION
 - (2) SLIDE OUT ROLLER GUIDE BRACKETS
 - (1) VERTICAL COMPARTMENT DIVIDER
 - (1) TOOL AIR REEL W/200' OF HOSE
 - (2) 1/2 DEPTH FLOOR MTD SLIDE OUT TRAYS WITH TOOLBOARDS
 - (1) 1/2 DEPTH ADJ SLIDE OUT TRAY
 - (1) ELECTRIC CORD REEL WITH 200' OF 10/4 BLACK CABLE
- COMPARTMENT R55 CONTAINS:
 - (2) HYDRAULIC TOOL TURNABLES
 - (1) SPEEDLAY WITH 150' OF 1.75" HOSE
 - (1) STD DEPTH ADJ SLIDE OUT/TILT TRAY
 - (1) 50A, 120/240V RECEPTACLE
- COMPARTMENT R56 CONTAINS:
 - (1) RACK FOR PIKE POLES

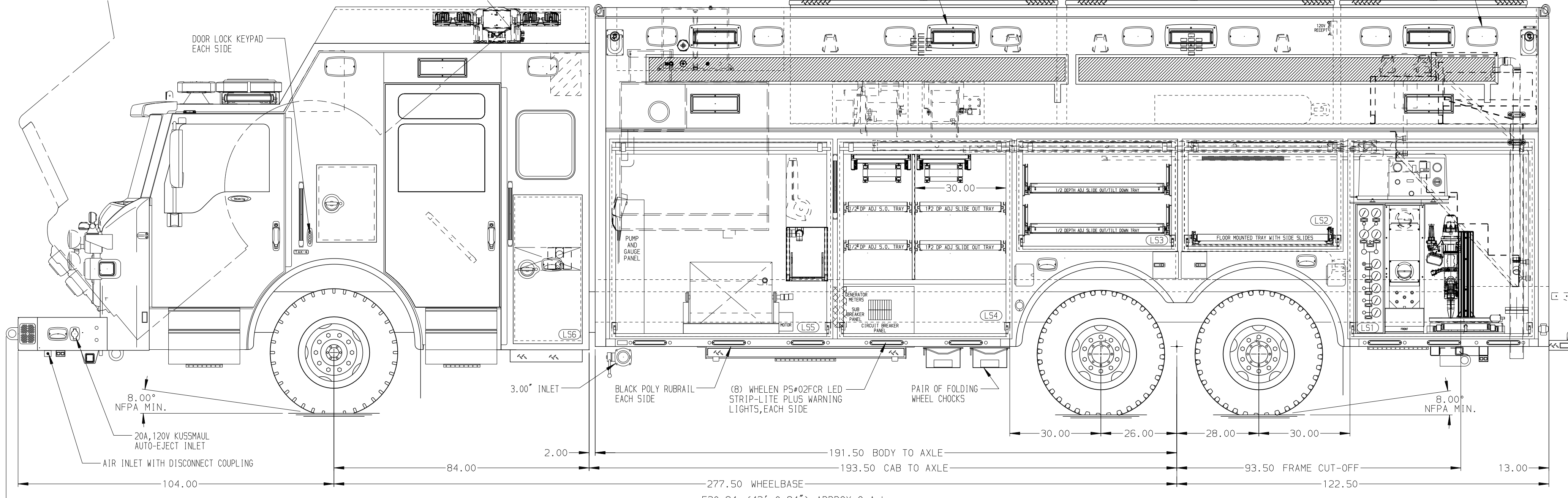
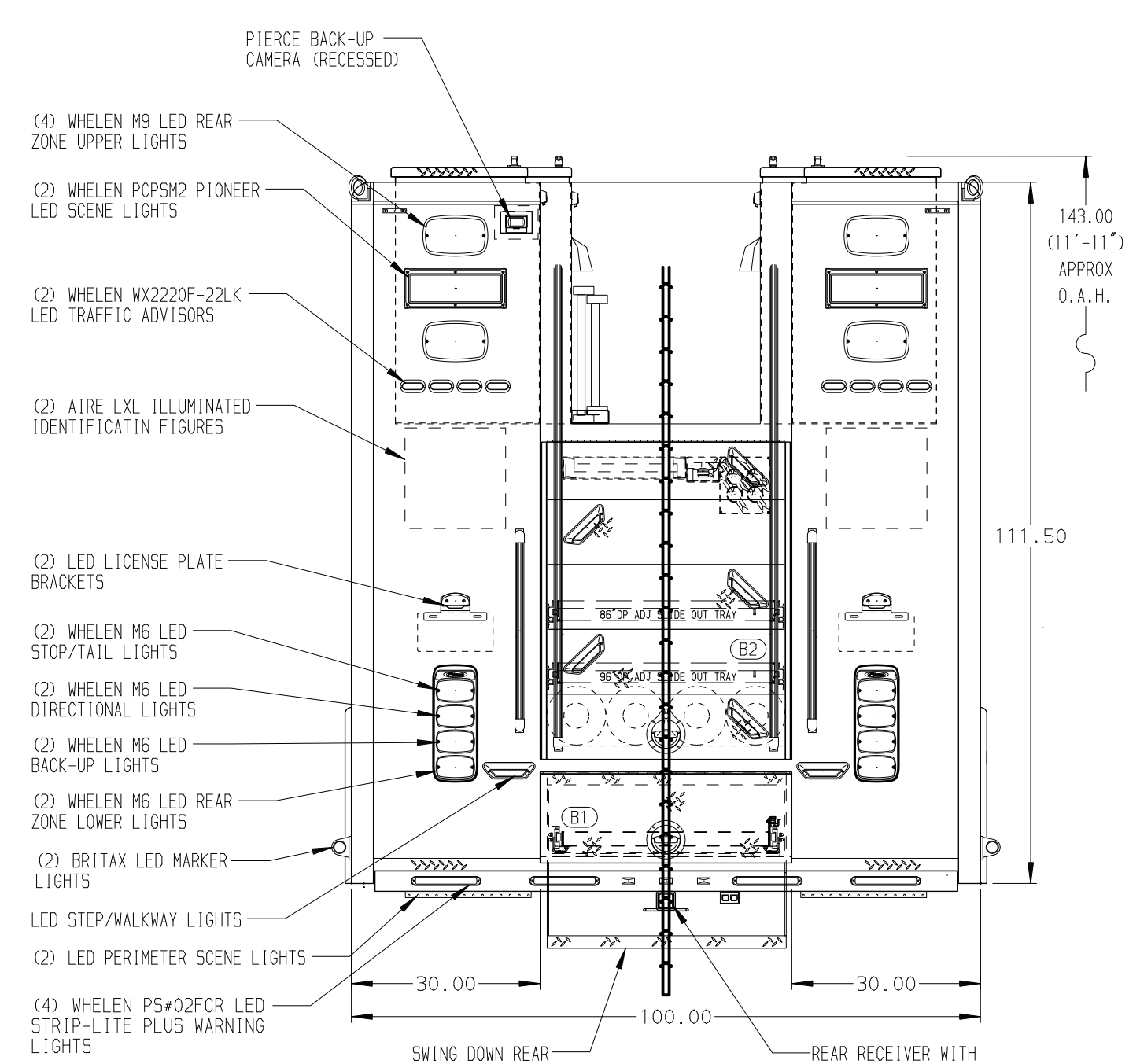


LEFT SIDE COMPARTMENTS CONTAIN THE FOLLOWING:

- COMPARTMENT L51 CONTAINS:
 - (1) .38\"/>
- COMPARTMENT L52 CONTAINS:
 - (1) STD DEPTH FLOOR MTD TRAY W/SIDE SLIDES
- COMPARTMENT L53 CONTAINS:
 - (2) 1/2 DEPTH ADJ SLIDE OUT/TILT TRAYS
- COMPARTMENT L54 CONTAINS:
 - (1) HORIZONTAL FLOOR EXTENSION
 - (1) VERTICAL COMPARTMENT DIVIDER
 - (4) 1/2 DEPTH ADJ SLIDE OUT TRAYS
 - (1) ELECTRIC CORD REEL WITH 200' OF 10/4 BLACK CABLE
 - (1) HIGH PRESSURE AIR REEL W/300' OF HOSE
 - (2) SLIDE OUT ROLLER GUIDE BRACKETS
 - (1) CIRCUIT BREAKER PANEL
 - (1) SUB FEED PANEL
 - (1) GENERATOR METER PANEL
- COMPARTMENT L55 CONTAINS:
 - (1) SPEEDLAY WITH 150' OF 1.75\"/>
- COMPARTMENT L56 CONTAINS:
 - (1) RACK FOR PIKE POLES

REAR COMPARTMENT CONTAINS THE FOLLOWING:

- COMPARTMENT B1 CONTAINS:
 - (1) FLOOR MOUNTED TRAY W/SIDE SLIDES
- COMPARTMENT B2 CONTAINS:
 - (1) 96\"/>



NOTE
DIMENSIONS SHOWN ARE APPROXIMATE AND ARE SUBJECT TO MINOR DEVIATIONS AS MAY OCCUR OR BE NECESSARY IN CONSTRUCTION. MINOR DETAILS NOT SHOWN.

- NOTES:**
1. WATERIOUS CPK-2 250 GPM WATER PUMP
 2. 15/20A, 120V DUPLEX RECEPTACLE LOCATED BEHIND OFFICERS SEAT
 3. BRUSHED 5/5 SCUFFPLATES ON CAB AND CREW CAB DOOR JAMBS
 4. FLOOR IN CAB AND CREW CAB TO BE PADDED RUBBER
 5. FIRECOM 5100D INTERCOM SYSTEM
 6. BATTERY CHARGE INDICATOR LOCATED ON DRIVER'S SEAT WITH BRACKET
 7. 5/5 GUARDS ON ALL BODY ROLL-UP DOORS
 8. ELECTRIC DOOR LOCKS ON ALL BODY ROLL-UP DOORS
 9. PULL STRIPS ON ALL BODY ROLL-UP DOORS
 10. PIERCE LED STRIP LIGHTS IN ALL BODY AND HATCH COMPARTMENTS
 11. 15/20A, 120V DUPLEX RECEPTACLE LOCATED IN EACH SIDE BODY COMPARTMENT
 12. COMPARTMENT VENTILATION SYSTEM
 13. AKRON EDUCTOR SINGLE AGENT FOAM SYSTEM
 14. 12V FAN IN EACH FORWARD AND CENTER HATCH COMPARTMENTS

MAXIMUM O.A.H. 11'-11"
SIDE ROLL AND FRONTAL IMPACT PROTECTION

CLEAR DOOR WIDTH KEY		DATE	BY	CH	CHASSIS DATA
AMDR ROLL UP DOORS:	-2 1/4"	15AUG23	DHE	AZU	TITLE
CORTITE ROLL UP DOORS:	-2 1/2"	17MAY23	DHE	AZU	HEAVY DUTY RESCUE
PIERCE DOUBLE LAP DOORS:	-4 1/4"	21APR23	DHE	AZU	NON-WALK-IN WITH 300 GAL WATER TANK AND 25 GAL FOAM
PIERCE LIFT-UP LAP DOORS:	-1 1/2"	19DEC22	DHE	CDK	WALKERSVILLE VOLUNTEER RESCUE COMPANY
(EX: 60" F-F - 2 1/4" = 57 3/4" CLEAR)	(F-F) = FRAME TO FRAME	REV	DATE	BY	CH

Pierce MANUFACTURING INC.

JOB NO. 38076

SCALE 1:24

DATE

TITLE

HEAVY DUTY RESCUE

NON-WALK-IN WITH 300 GAL WATER TANK AND 25 GAL FOAM

WALKERSVILLE VOLUNTEER RESCUE COMPANY

BID #673

GUESSFORD, RODNEY

DRAWN BY DHE

CHECKED BY AZU

SHEET SIZE D

DATE

07NOV22

29NOV22

SHEET NO.

1 OF 1

DWG NO. 38076AD