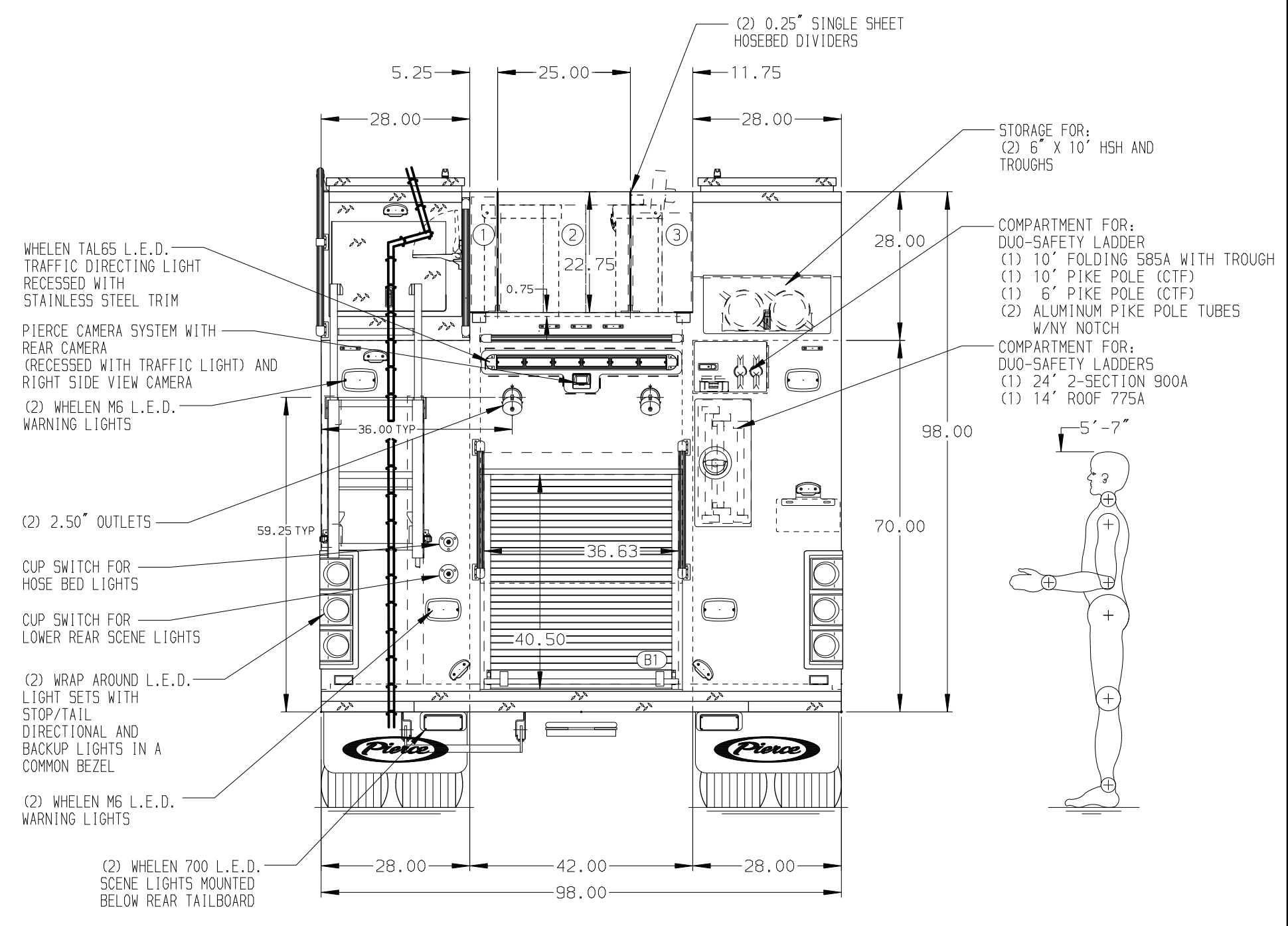
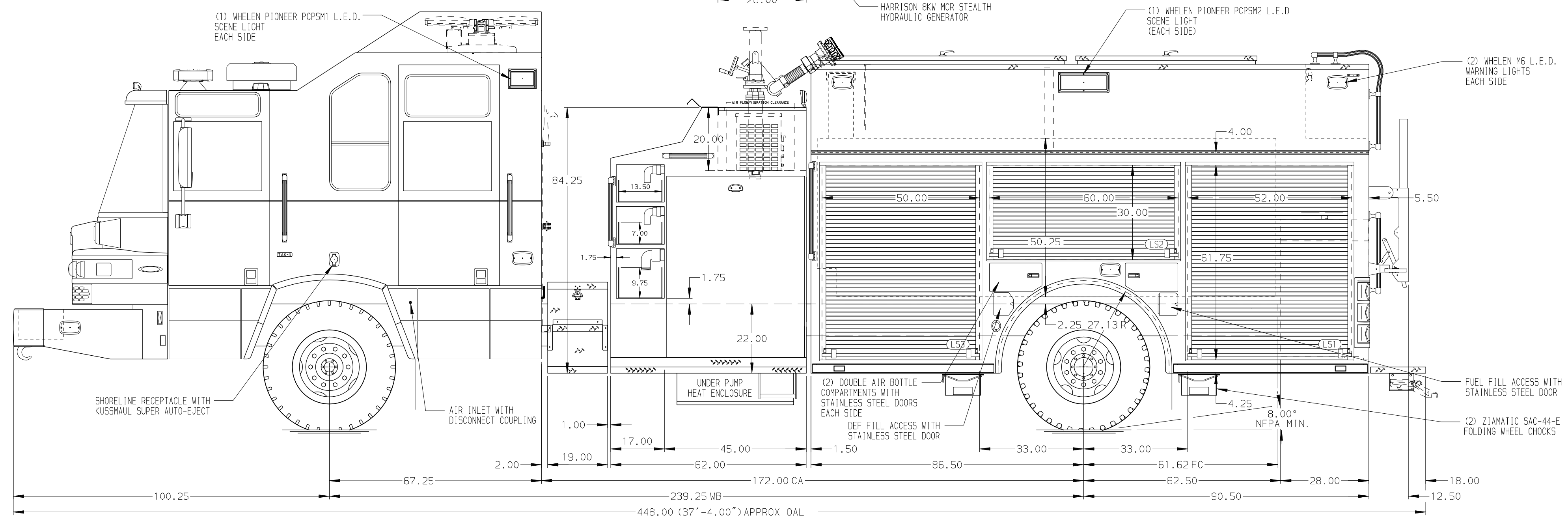


HOSEBED CAPACITIES

- 350' OF 2.50\"/>
- 1000' OF 5.00\"/>
- 600' OF 3.00\"/>



ALUMINUM BODY

SIDE ROLL AND FRONTAL IMPACT PROTECTION

NOTE  
 DIMENSIONS SHOWN ARE APPROXIMATE AND ARE SUBJECT TO MINOR DEVIATIONS AS MAY OCCUR OR BE NECESSARY IN CONSTRUCTION.  
 MINOR DETAILS NOT SHOWN.

- BATTERY CHARGER LOCATED BEHIND DRIVER'S SEAT
- BATTERY CHARGER INDICATOR LOCATED ON DRIVER'S SEAT RISER
- DUAL L.E.D. LIGHT STRIPS LOCATED IN HOSE BED
- DUAL L.E.D. LIGHT STRIPS LOCATED IN CARGO AREA
- L.E.D. LIGHT STRIPS LOCATED IN HATCH COMPARTMENTS
- THREE ADDITIONAL POLY TRAYS SHIPPED LOOSE

REV	DATE	BY	CH	QUANTUM
200CT23		SAM	DTJ	MAKE
08SEP23		SAM	DTJ	PIERCE
14JUN23		SAM	EGO	MODEL

	TITLE	1500-D-1000P, 980G WATER W/20G FOAM, 177\"/>	
	FOR	KOHLER FIRE DEPARTMENT KOHLER, WISCONSIN	
DWG NO.	38077AD-SH1		
JOB NO.	38077	DATE	01JUN23
SCALE	1:24	CHECKED BY	EGO
DRAWN BY	SAM	SHEET SIZE	D
		SHEET NO.	1 OF 2