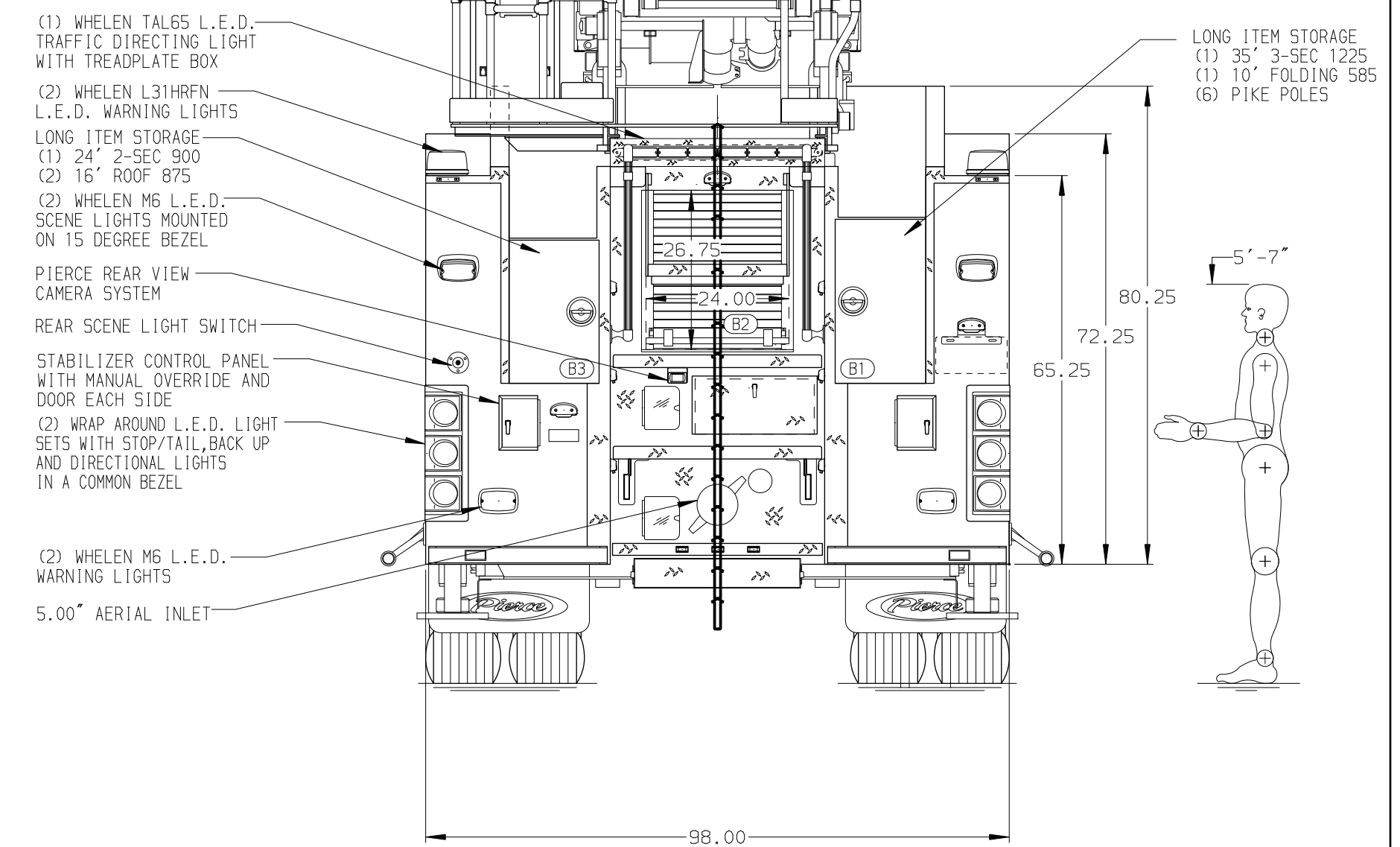
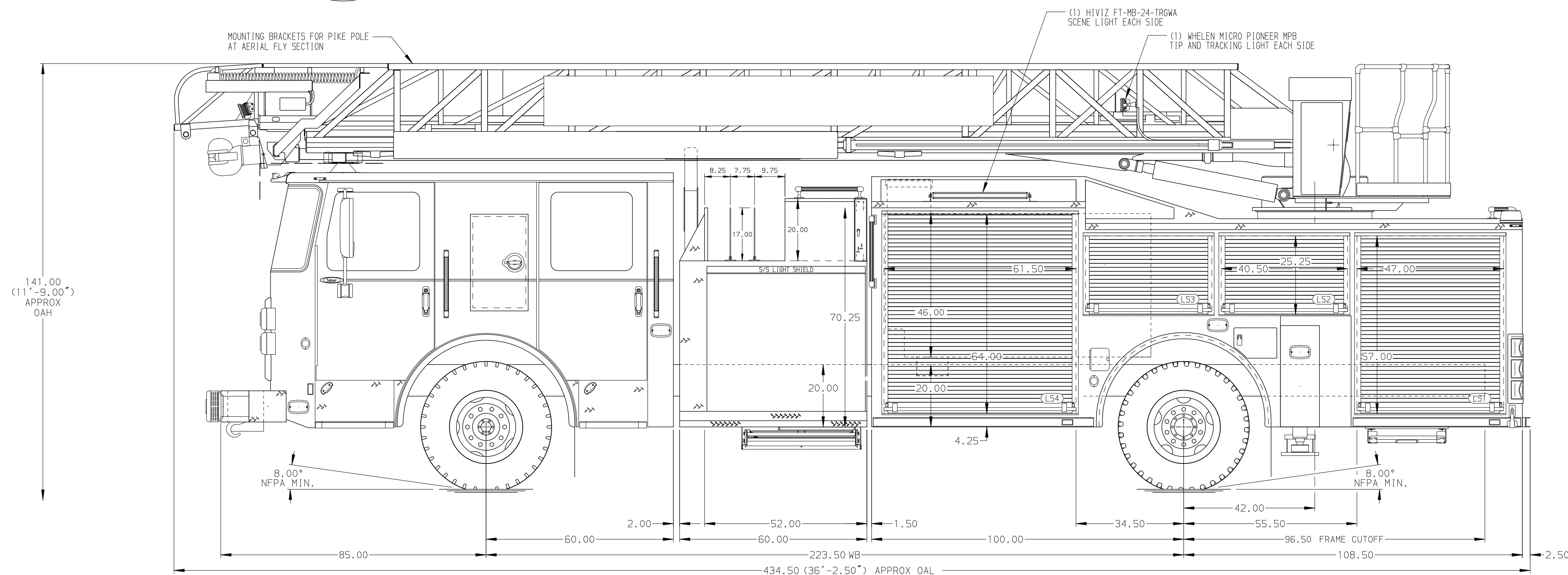
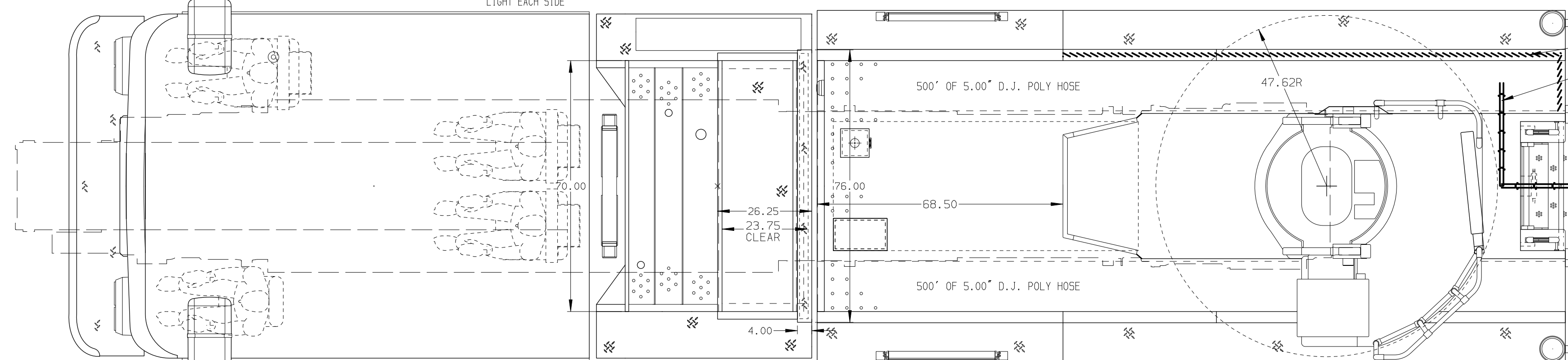


BODY 75' HAL Aluminum Body	WATER TANK 475 Gallon Poly Water Tank
COMPT, LEFT SIDE FRONT Full Height RollUp Forward	Foam System FoamPro Single Agent Foam System
COMPT, LEFT SIDE REAR Full Height RollUp Rearward	Foam Cell 25 Gallon Foam Cell, Reduced Water
COMPT, RIGHT SIDE FRONT Full Height RollUp Forward	
COMPT, RIGHT SIDE REAR Full Height RollUp Rearward	



CHASSIS Saber FR Chassis ENGINE 450 HP Cummins L9 Engine	CAB 6000 Saber FR Cab BUMPER 16" Extended Stainless Steel	AXLE, FRONT, CUSTOM 20,000 Lb Dana Axle AXLE, REAR 33,500 Lb Meritor Axle	TRANSMISSION Allison 5th Gen, 3000 EV5 P	PUMPHOUSE 52" Control Zone Side Mount PUMP 1500 GPM Waterous CSU	CROSSLAYS, 1.50" (2) 1.50" Standard Capacity CROSSLAYS, 2.50" (1) 2.50" Standard Capacity	SPEEDLAYS Speedlays Not Required GENERATOR Generator Not Required	-	-	-	CUSTOMER APPROVAL APPROVED BY: _____ DATE: _____	PIERCE MANUFACTURING INC.	JOB NO. 38080 SCALE 1:24 DATE
NOTE DIMENSIONS SHOWN ARE APPROXIMATE AND ARE SUBJECT TO MINOR VARIATIONS AS MAY OCCUR OR BE NECESSARY IN CONSTRUCTION. MINOR DETAILS NOT SHOWN.										TITLE 75 AERIAL LADDER & BODY ASSEMBLY MAKE LAUDERDALE BY THE SEA MODEL LAUDERDALE BY THE SEA, FL DWG NO. 38080AD	DRAWN BY JGA CHECKED BY CRI SHEET SIZE D SHEET NO. 1 OF 1	