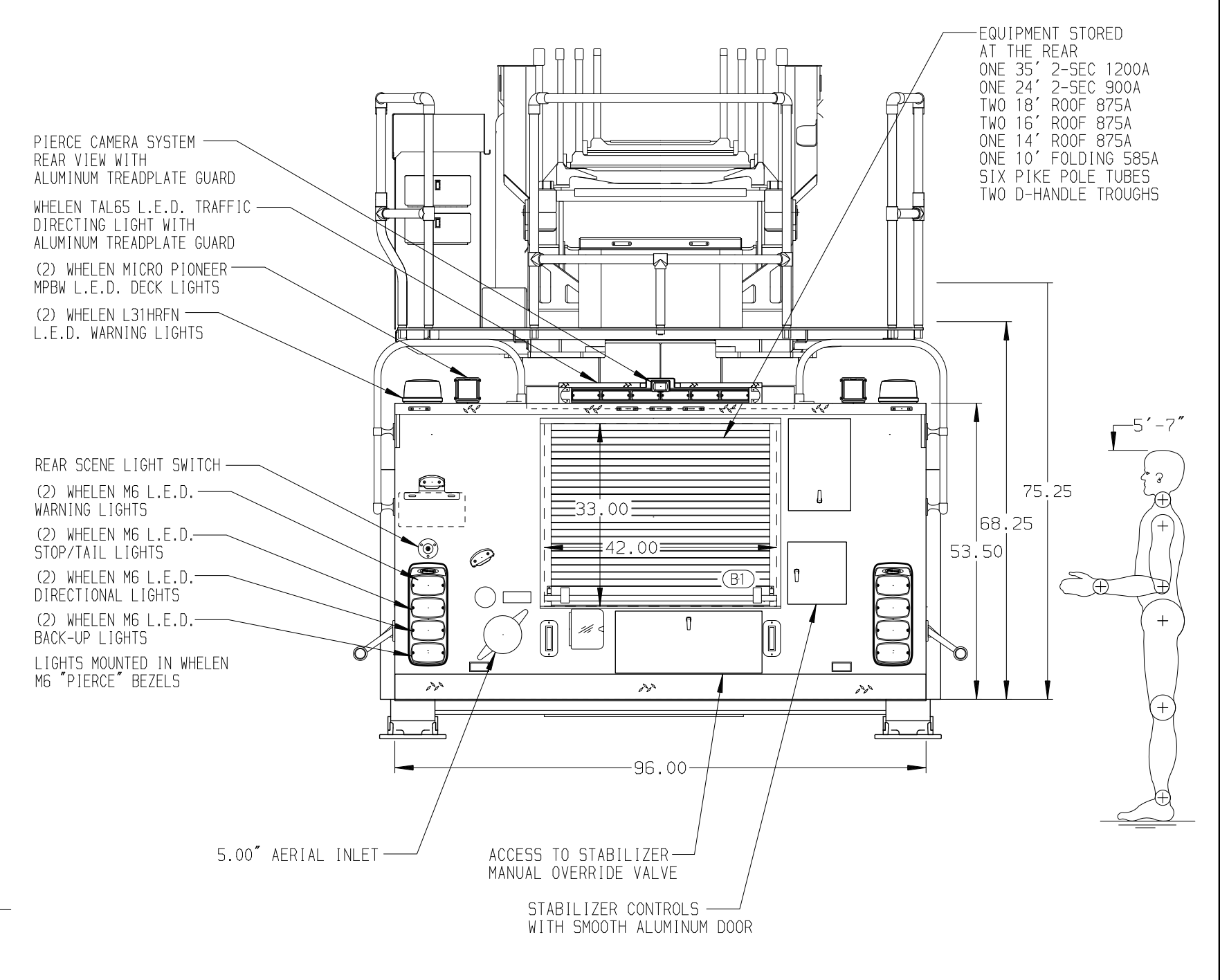
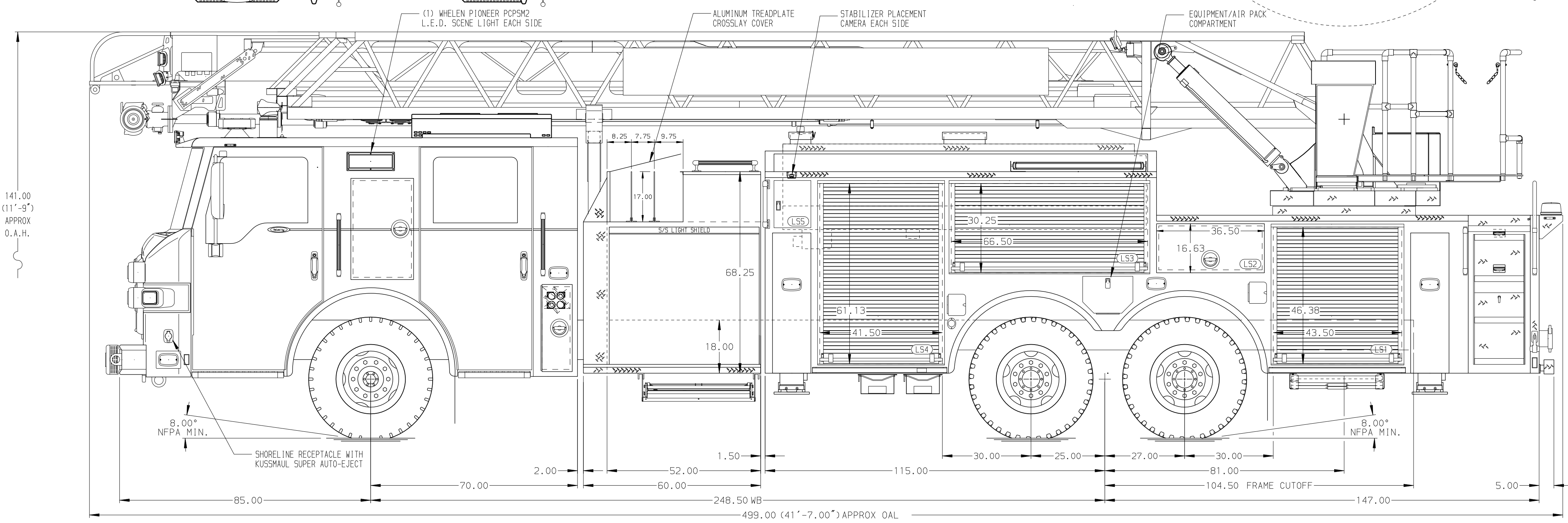


BODY	WATER TANK
107' ASL Tandem Axle Aluminum Body	475 Gallon Notched Poly Water Tank
COMPT, LEFT SIDE FRONT	Foam System
FH/FD RollUp Forward w/o Chute	External-FoamPro 1601 Foam System
COMPT, LEFT SIDE REAR	Foam Cell
FH/FD RollUp and Lift-up Rearward	25 Gallon Foam Cell, Reduced Water
COMPT, RIGHT SIDE FRONT	
Full Height RollUp Forward	
COMPT, RIGHT SIDE REAR	
Full Height RollUp and Lift-up Rearward	



CHASSIS	CAB	AXLE, FRONT, CUSTOM	TRANSMISSION	PUMPHOUSE	CROSSLAYS, 1.50"	SPEEDLAYS	SAFETY	CUSTOMER APPROVAL	Pierce MANUFACTURING INC.		JOB NO.
Velocity Chassis (Big Block)	7000 Velocity FR Cab	23,000 Lb Meritor Axle	Allison 5th Gen, 4500 EVS P	52" Control Zone Side Mount	(2) 1.50" Standard Capacity	Speedlays Not Required	Side Roll and Frontal Impact Protection	APPROVED BY: _____			38108
ENGINE	BUMPER	AXLE, REAR		PUMP	CROSSLAYS, 2.50"	GENERATOR		DATE: _____			SCALE
605 HP Cummins X15 Engine	Non-Extended Stainless Steel	44,000 Lb Meritor Axle		2000 GPM Hole QMAX-200	(1) 2.50" Standard Capacity	Generator Not Required			1:24		
NOTE									TITLE		DRAWN BY
DIMENSIONS SHOWN ARE APPROXIMATE AND ARE SUBJECT TO MINOR DEVIATIONS AS MAY OCCUR OR BE NECESSARY IN CONSTRUCTION. MINOR DETAILS NOT SHOWN.									FOR		11APR22
1. ONSPOT AUTOMATIC TIRE CHAINS TO BE PROVIDED AT REAR									DWG NO.		13APR22
2. BATTERY CHARGER MOUNTED BEHIND DRIVER'S SEAT									38108AD		SHEET NO.
3. DUAL L.E.D. LIGHT STRIPS LOCATED IN HOSE BED									D		1 OF 1
4. STABILIZER COMPARTMENTS MODIFIED FOR 18" GROUND PENETRATION											
5. S/STL DRIP PAN/GUARD FOR ROLL-UP DOOR LOCATED PER SHOP											
6. TEN ADJUSTABLE FULL WIDTH/FULL DEPTH SHELVES IN COMPARTMENT PER ORDER											
7. FOUR FLOOR MOUNTED SLIDE-OUT TRAYS IN COMPARTMENT PER ORDER											
8. TWO 120V DUPLEX RECEPTACLES LOCATED IN COMPARTMENT PER ORDER											
9. TRIDENT FOLDING STEPS ON AERIAL DEVICE											
10. 14.00" AERIAL LIMITED RETRACTION											
11. STABILIZERS MODIFIED FOR 18" GROUND PENETRATION											
12. L.E.D. LIGHTING ON AERIAL LADDER SECTIONS											
13. DC POWER TO AERIAL TIP											
14. 2-WAY INTERCOM SYSTEM BETWEEN AERIAL TIP OR PLATFORM AND TURNTABLE											
15. AERIAL PEDESTAL RAISED 3.00"											
16. LIFEPULLEY RESCUE SYSTEM AT AERIAL TIP											
17. LIFTING EYE ROPE RESCUE ATTACHMENT AT AERIAL TIP											
18. PAINTED STORAGE BOX FOR LIFE PULLEY ROPE TIE BAR AT AERIAL BASE SECTION											
19. 1500 GPM HIGH FLOW WATERWAY											
20. AIR INLET/OUTLET WITH DISCONNECT FITTING LOCATED AT DRIVER SIDE PUMP PANEL PER ORDER											
21. BATTERY CHARGER INDICATOR LOCATED IN DRIVER SIDE STEP WELL											