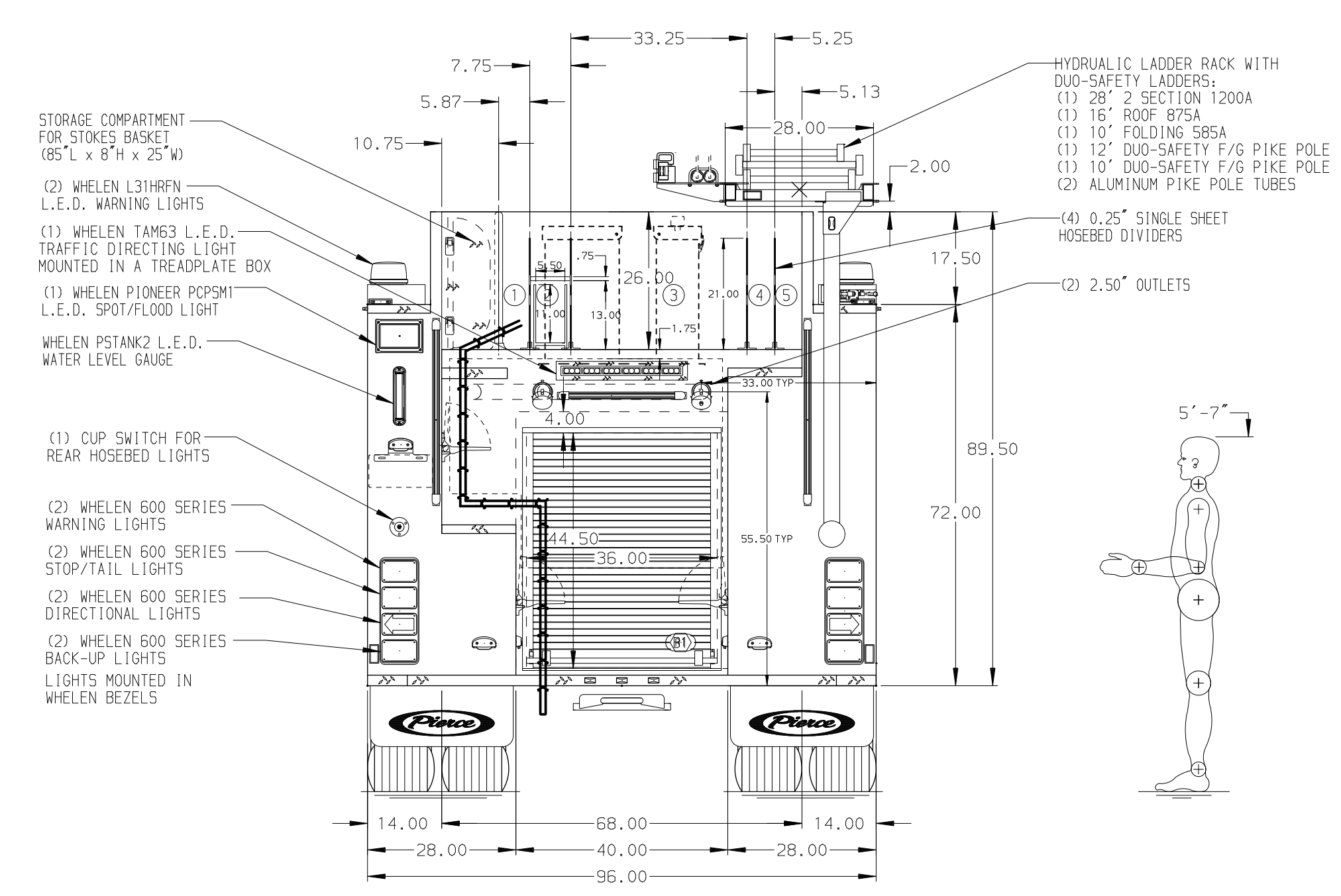


- HOSEBED CAPACITIES**
- ① 200' OF 2.50" D.J. POLY HOSE
 - ② 100' OF 1.75" HOSE IN AN ALUMINUM REMOVABLE TRAY (5.5" X 11" X 84")
 - ③ 1000' OF 5.00" D.J. POLY HOSE
 - ④ 200' OF 2.50" D.J. POLY HOSE
 - ⑤ 200' OF 2.50" D.J. POLY HOSE



ALUMINUM BODY

NOTE
 DIMENSIONS SHOWN ARE APPROXIMATE AND ARE SUBJECT TO MINOR DEVIATIONS AS MAY OCCUR OR BE NECESSARY IN CONSTRUCTION. MINOR DETAILS NOT SHOWN.

- 1. ONSPOUT AUTOMATIC TIRE CHAINS TO BE PROVIDED AT REAR
- 2. BATTERY CHARGER LOCATED BEHIND THE DRIVER'S SEAT
- 3. BATTERY CHARGER INDICATOR LOCATED ON DRIVER'S SEAT RISER
- 4. WHELEN 700CELZR L.E.D. LIGHT LOCATED AT THE FRONT OF THE HOSE BED
- 5. TWO STRAPS FOR LITTLE GIANT LADDER

REV	DATE	BY	CH	ENFORCER
01DEC23	KLE	GKH		
13OCT23	JJB	GKH		
11OCT23	LME	GKH		
17JUL23	LME	EGO		

		JOB NO.	38138
		SCALE	DATE
TITLE	1500-D-780P, 750 WATER W/30 FOAM, 161" BODY, FDLR (3) CROSSLAYS, DELUGE, HYDRAULIC LADDER RACK	DRAWN BY	LME
FOR	CAMAS-WASHOUGAL FIRE DEPARTMENT CAMAS, WASHINGTON STATE	CHECKED BY	EGO
DWG NO.	38138AD-SH1	SHEET SIZE	SHEET NO.
		D	1 OF 2