

**PUMPER BODY**  
Medium Aluminum 2nd Gen Pumper

**CHASSIS**  
Velocity Chassis (Medium Block)

**CHASSIS AXLE, FRONT, CUSTOM**  
19,500 Lb TAK-4 Axle

**AXLE, REAR**  
24,000 Lb Meritor Axle

**ENGINE**  
450 HP Cummins L9 Engine

**TRANSMISSION**  
Allison 5th Gen, 3000 EVS P

**BUMPER**  
22" Extended Painted Steel

**CAB**  
7010 Velocity FR Cab

**BODY WATER TANK**  
500 Gallon New York Style Water Tank

**COMPT, PUMPER, REAR**  
30.75" FF RollUp Rear Compt

**COMPT, PUMPER, LEFT SIDE**  
152" RollUp Full Height Front & Rear FDLR

**COMPT, PUMPER, RIGHT SIDE**  
152" RollUp Full Height Front & Rear FDLR

**FIRE SUPPRESSION PUMPHOUSE**  
45" Control Zone Side Mount

**PUMP**  
1500 GPM Waterous CSU

**CROSSLAYS, 1.50"**  
(2) 1.50" Standard Capacity

**CROSSLAYS, 2.50"**  
2.50" Crosslay Not Required

**SPEEDLAYS**  
Speedlays Not Required

**GENERATOR**  
Generator Not Required

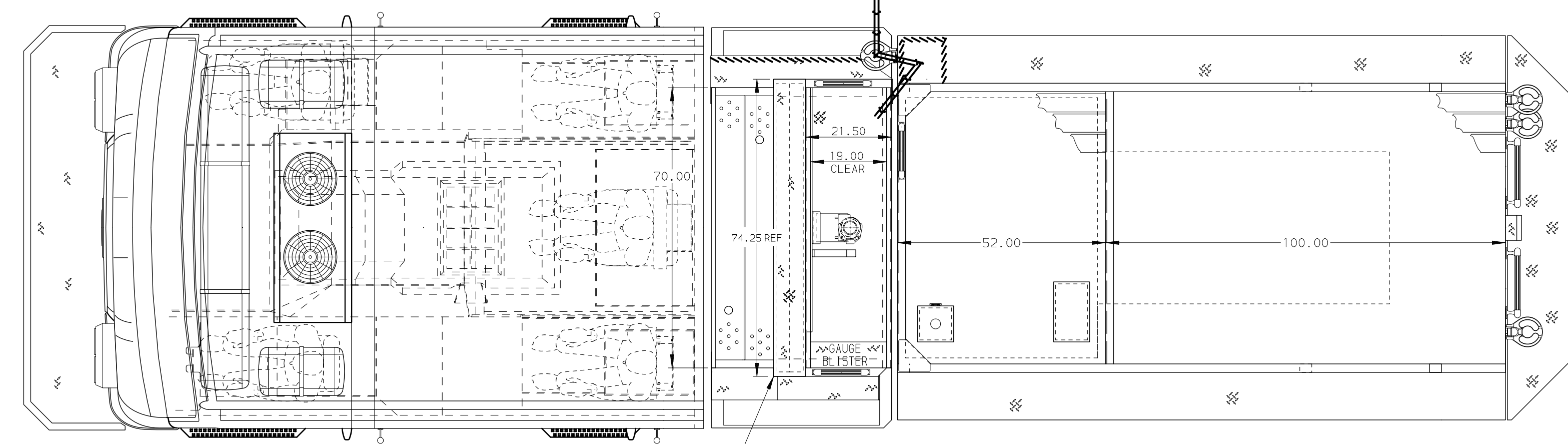
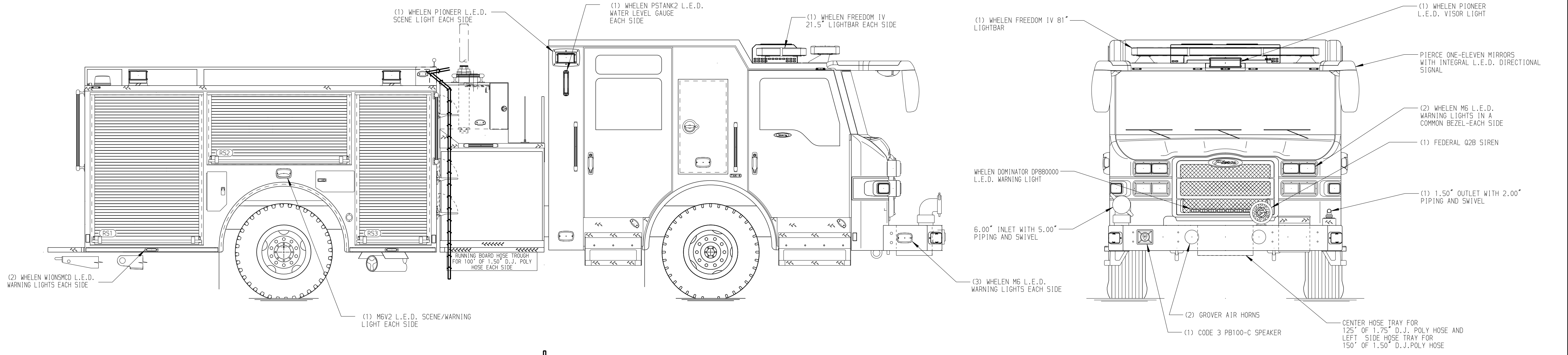
**Foam System**  
Akron Eductor Foam System

**Foam Cell**  
40 Gallon Foam Cell, Not Reduced Water

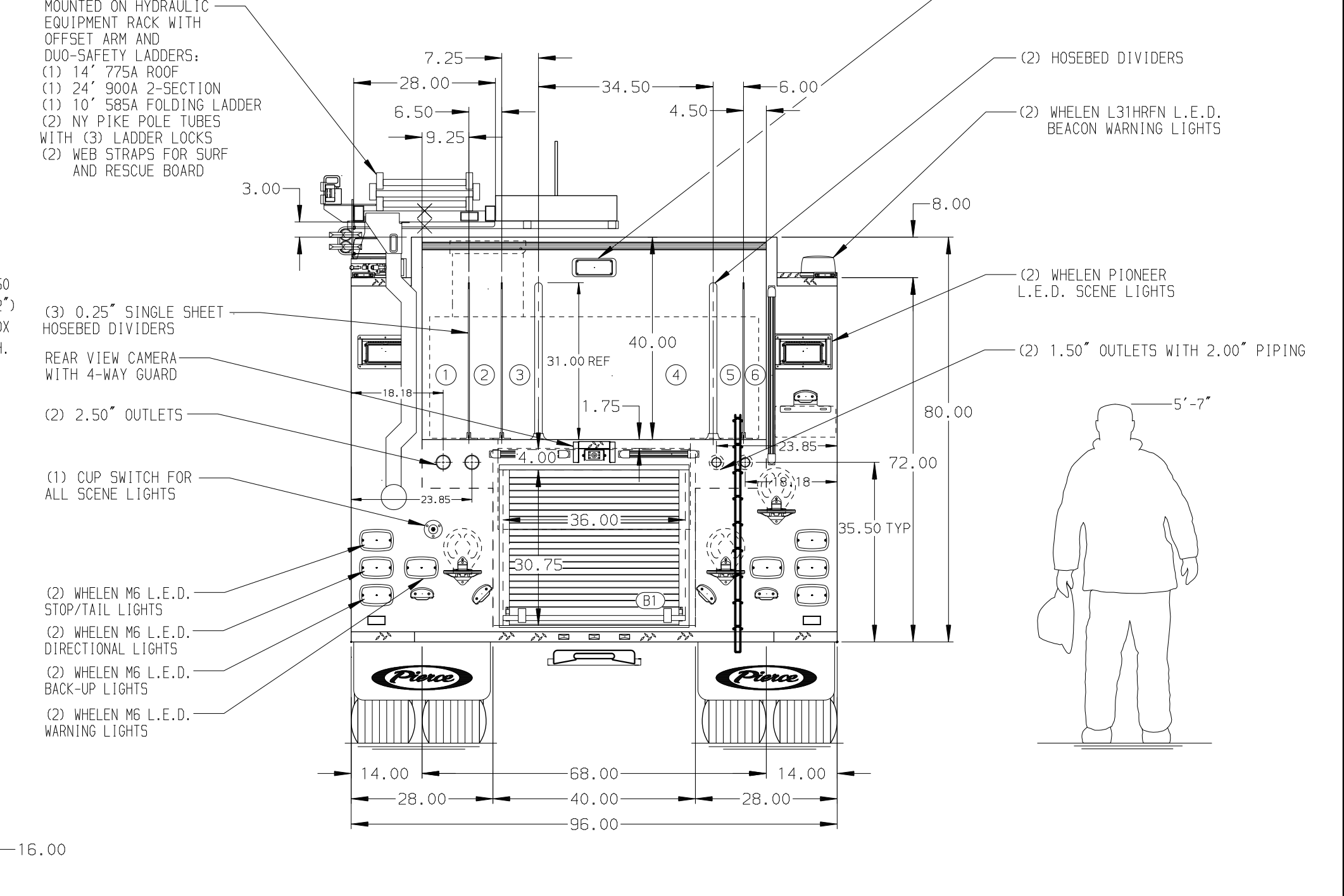
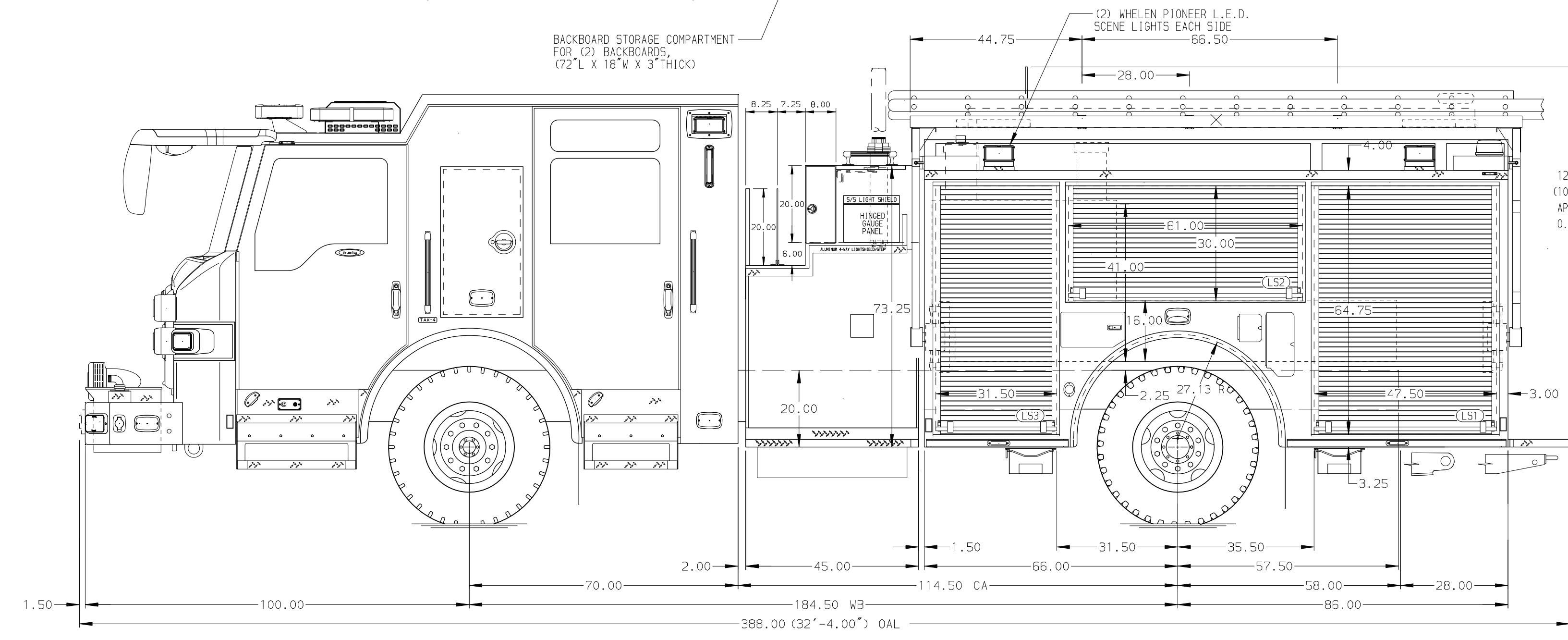
Frontal Impact Protection

**NOTE**  
DIMENSIONS SHOWN ARE APPROXIMATE AND ARE SUBJECT TO MINOR DEVIATIONS AS MAY OCCUR OR BE NECESSARY IN CONSTRUCTION. MINOR DETAILS NOT SHOWN.

- BATTERY CHARGER LOCATED IN CREW CAB SEAT RISER
- TWO HIGH RISE PACK STORAGE BRACKETS LOCATED PER SHOP ORDER
- PAC TRAC LOCATED PER SHOP ORDER
- ONE ADJUSTABLE SHELF LOCATED PER SHOP ORDER
- BATTERY CHARGE INDICATOR LOCATED ON DRIVER SEAT WITH BRACKET
- 120V SHORELINE RECEPTACLE W/ KUSHMAUL SUPER AUTO EJECT LOCATED ON DRIVER SIDE BUMPER EXTENSION
- AIR INLET/OUTLET WITH DISCONNECT FITTING LOCATED IN DRIVERS STEP WELL
- ONE 120V DUPLEX RECEPTACLE LOCATED PER SHOP ORDER
- ONE FLOOR MOUNTED TRAY LOCATED IN COMPARTMENT PER SHOP ORDER
- LONG TOOL STORAGE TUBE LOCATED IN TRANSVERSE AREA THROUGH REAR COMPARTMENT



HOSEBED CAPACITY	
BED 1	400' OF 2.50" D.J. POLY HOSE
BED 2	300' OF 3.00" D.J. POLY HOSE
BED 3	300' OF 3.00" D.J. POLY HOSE
BED 4	1100' OF 5.00" D.J. POLY HOSE
BED 5	150' OF 1.75" D.J. POLY HOSE
BED 6	200' OF 1.75" D.J. POLY HOSE



CUSTOMER APPROVAL			
APPROVED BY:			
DATE:			
CHASSIS DATA	TITLE	Pierce Pumper Approval Drawing	
MAKE	FOR	City of Clearwater Fire Department	
PIERCE	DWG NO.	38164AD	
MODEL	REV	DATE	BY
VELOCITY			CH

<b>Pierce MANUFACTURING INC.</b>		JOB NO.	38164
		SCALE	1:24
		DATE	
		DRAWN BY	MMF
		CHECKED BY	COL
		SHEET SIZE	D
		SHEET NO.	1 OF 1