

PUMPER BODY
Medium Aluminum 2nd Gen Pumper

CHASSIS
Enforcer Chassis

CHASSIS AXLE, FRONT, CUSTOM
20,000 Lb Meritor Axle

AXLE, REAR
27,000 Lb Meritor Axle

ENGINE
500 HP Cummins X12 Engine

TRANSMISSION

BUMPER
19" Extended Stainless Steel

CAB
7010 Enforcer Cab

BODY WATER TANK
750 Gallon Poly Water Tank

COMPT, PUMPER, REAR
30.75" FF RollUp Rear Compt

COMPT, PUMPER, LEFT SIDE
152" Lap Full Height & Depth Front & Rear

COMPT, PUMPER, RIGHT SIDE
152" Lap Full Height & Depth Front & Rear

FIRE SUPPRESSION PUMPHOUSE
48" Control Zone Top Mount

PUMP
1500 GPM Waterous CSU

CROSSLAYS, 1.50"
1.50" Crosslays Not Required

CROSSLAYS, 2.50"
2.50" Crosslay Not Required

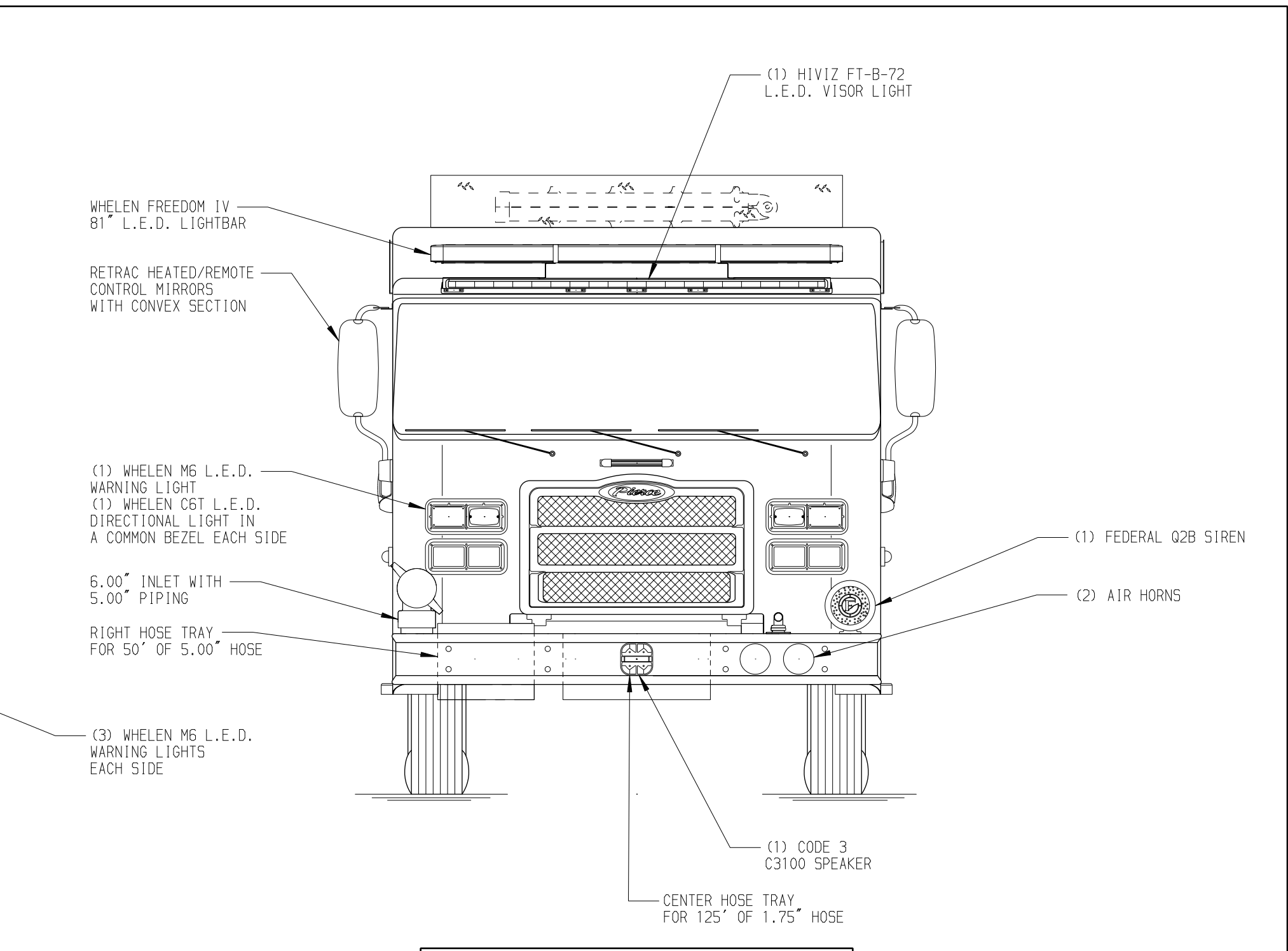
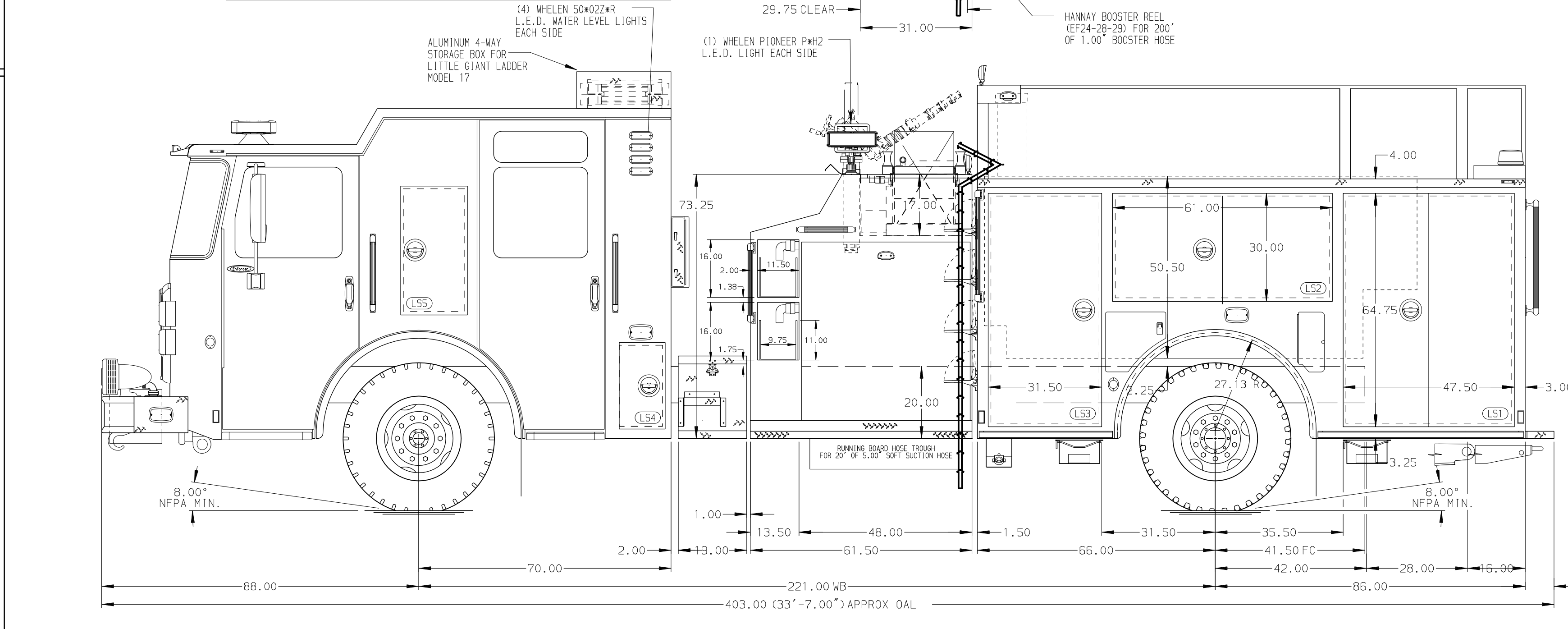
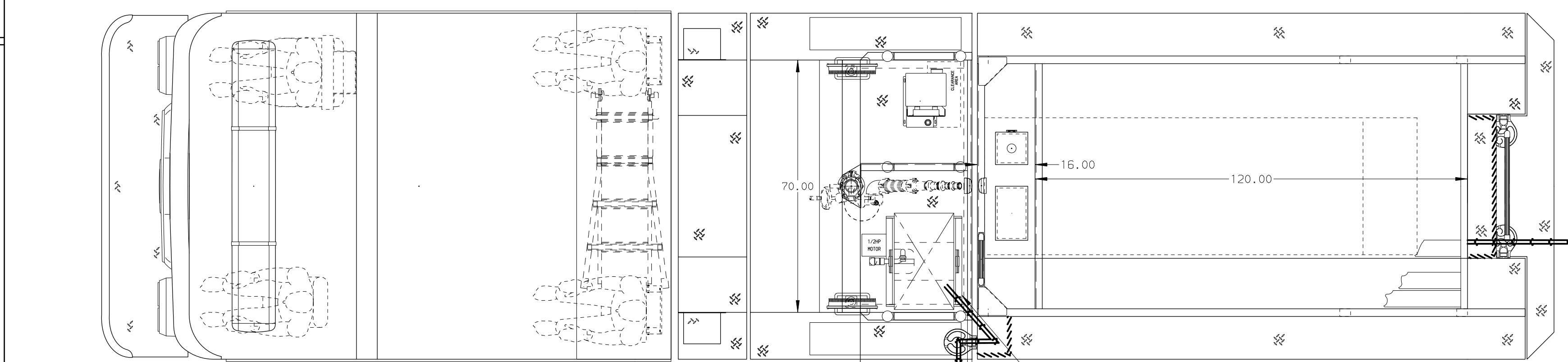
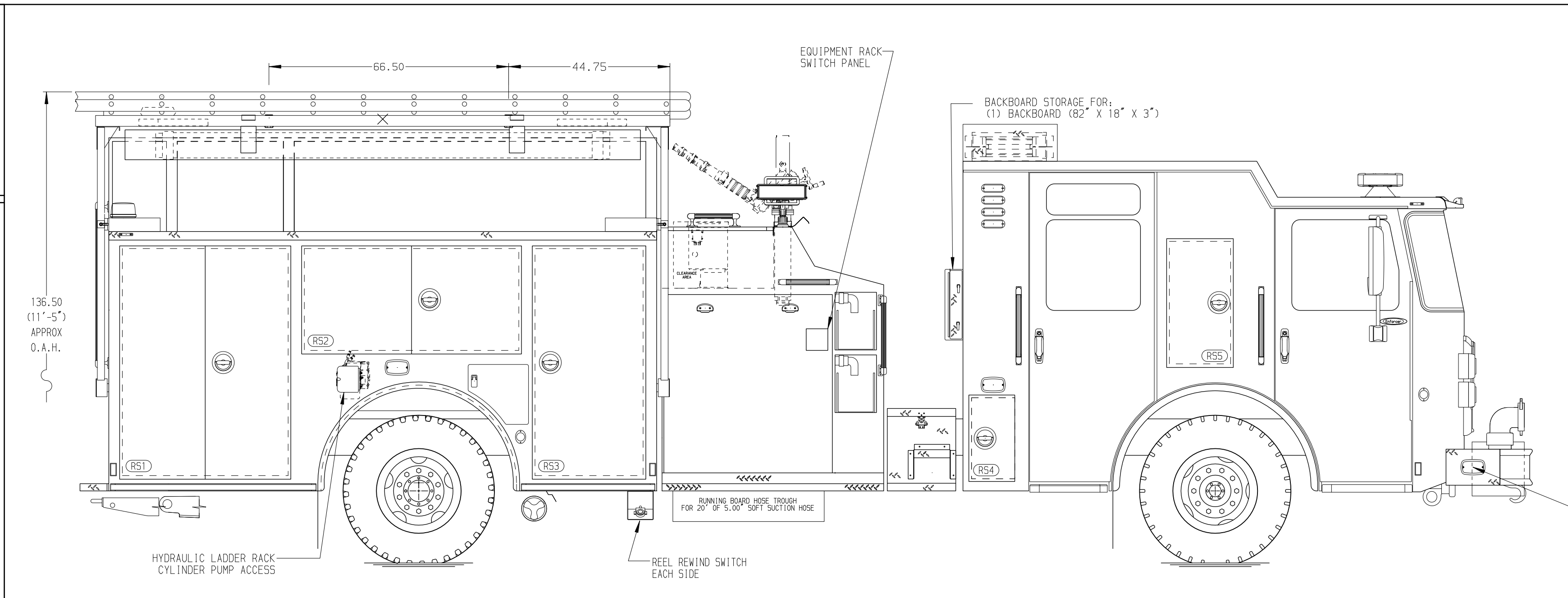
SPEEDLAYS
(2) 1.50" W/Troy Std. Capacity

GENERATOR
Generator Not Required

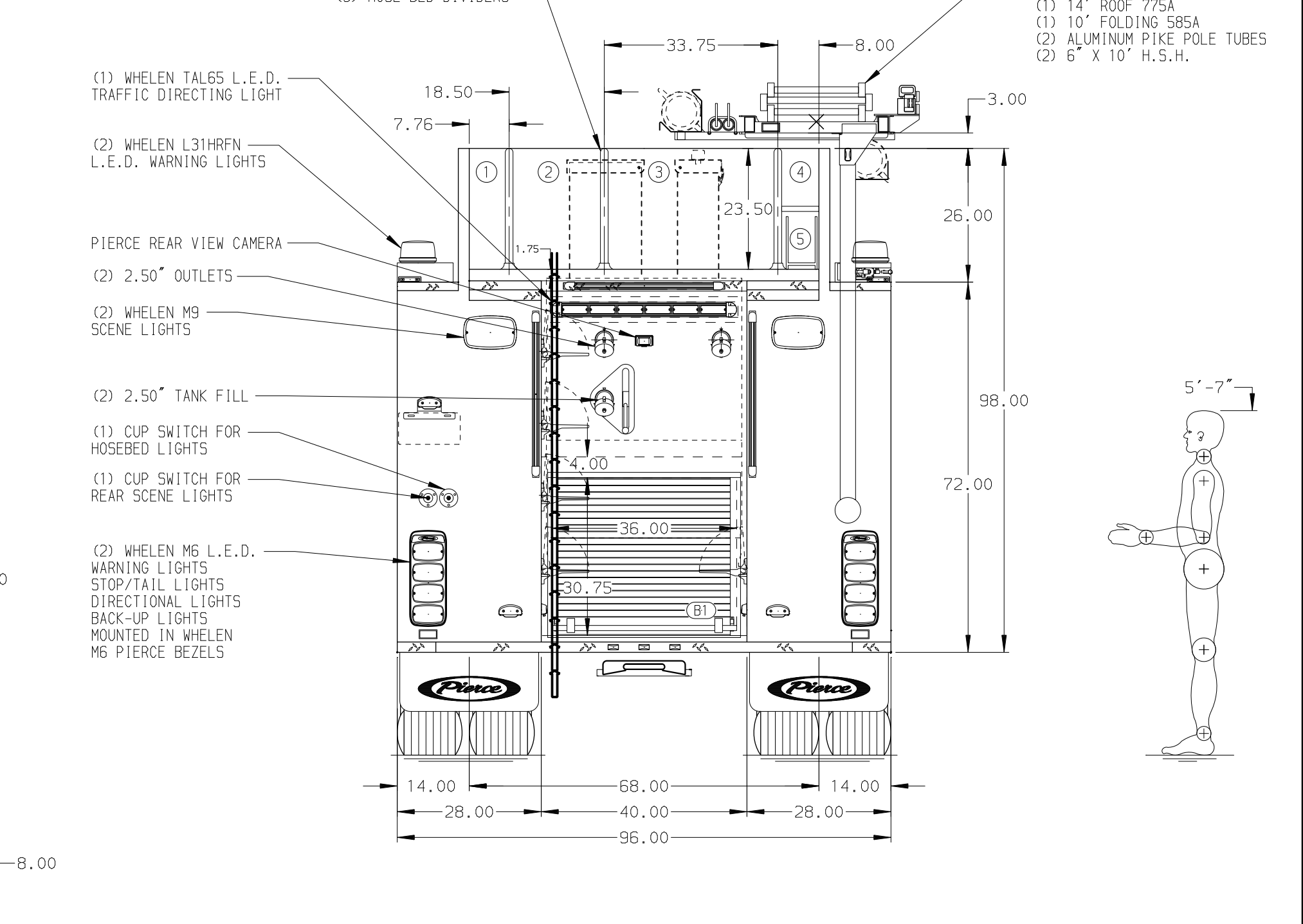
Foam System
Husky 3 Single Agent Foam System

Foam Cell
20 Gallon Foam Cell, Not Reduced Water

NOTE
DIMENSIONS SHOWN ARE APPROXIMATE AND ARE SUBJECT TO MINOR DEVIATIONS AS MAY OCCUR OR BE NECESSARY IN CONSTRUCTION. MINOR DETAILS NOT SHOWN.



HOSEBED CAPACITY	
BED 1	250' OF 2.50" D.J. POLY HOSE
BED 2	500' OF 3.00" D.J. POLY HOSE
BED 3	1000' OF 5.00" D.J. POLY HOSE
BED 4	(2) 100' OF 1.75" D.J. POLY HOSE (BUNDLES)
BED 5	(2) 50' OF 2.50" D.J. POLY HOSE (BUNDLES)



CUSTOMER APPROVAL			
APPROVED BY:			
DATE:			
CHASSIS DATA	TITLE	Pierce Pumper Approval Drawing	
MAKE	FOR	Kuna Rural Fire District	
PIERCE	DWG NO.	38181AD	
MODEL	ENFORCER		
REV	DATE	BY	CH

Pierce MANUFACTURING INC.		JOB NO.	38181
SCALE	1:24	DATE	
DRAWN BY	MMF	DATE	19MAY22
CHECKED BY	COL	DATE	20MAY22
SHEET SIZE	D	SHEET NO.	1 OF 1