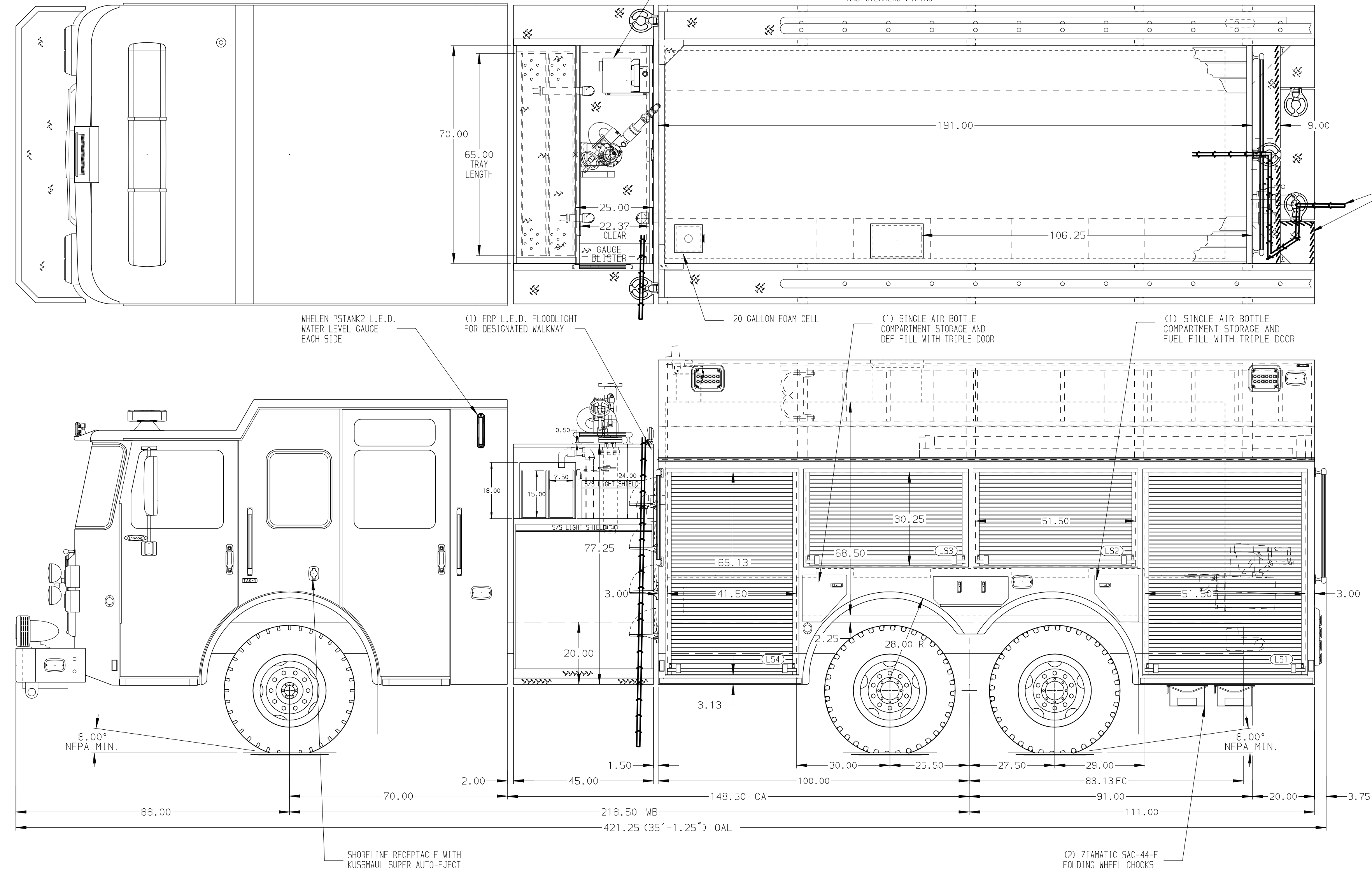
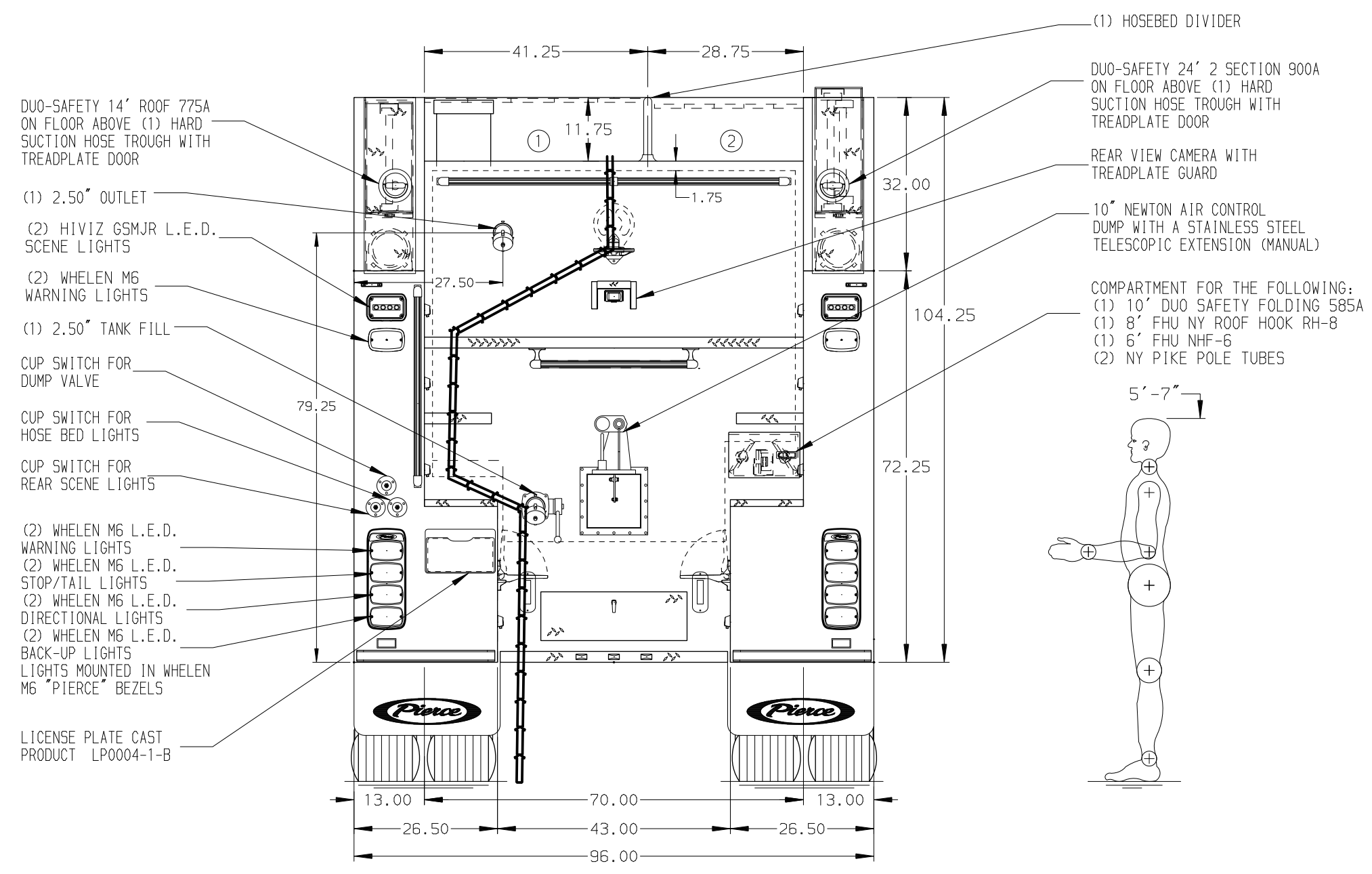


- HOSEBED CAPACITIES
- ① - 900' OF 5.00" D.J. POLY HOSE
  - ② - 1000' OF 3.00" D.J. POLY HOSE



SURFACE DESIGNATION AND PATHWAY MARKINGS



ALUMINUM BODY

SIDE ROLL AND FRONTAL IMPACT PROTECTION

NOTE

DIMENSIONS SHOWN ARE APPROXIMATE AND ARE SUBJECT TO MINOR DEVIATIONS AS MAY OCCUR OR BE NECESSARY IN CONSTRUCTION. MINOR DETAILS NOT SHOWN.

- 1. BATTERY CHARGER LOCATED PER SHOP ORDER
- 2. BATTERY CHARGER INDICATOR LOCATED PER SHOP ORDER
- 3. DUAL L.E.D. LIGHT STRIPS LOCATED IN HOSE BED
- 4. SEVEN FULL WIDTH/DEPTH ADJUSTABLE SHELVES LOCATED PER SHOP ORDER
- 5. TWO FLOOR MOUNTED SLIDE-OUT TRAYS LOCATED PER SHOP ORDER
- 6. TWO SWING-OUT ALUMINUM TOOL BOARDS LOCATED PER SHOP ORDER
- 7. AIR INLET WITH DISCONNECT COUPLING LOCATED PER SHOP ORDER
- 8. TWO FULL WIDTH/DEPTH ADJUSTABLE 30° ANGLED SHELVES LOCATED PER SHOP ORDER
- 9. TWO 120V RECEPTACLES LOCATED PER SHOP ORDER

REV	DATE	BY	CH	ENFORCER
11DEC23	JJB	DTJ	MAKE	
29NOV23	JJB	DTJ	PIERCE	
27OCT23	JJB	DTJ	MODEL	

Pierce MANUFACTURING INC.		JOB NO.	38190
		SCALE	1:24
		DATE	
TITLE		DRAWN BY	JJB
FOR		CHECKED BY	WKL
DWG NO.		SHEET SIZE	D
		SHEET NO.	1 OF 1