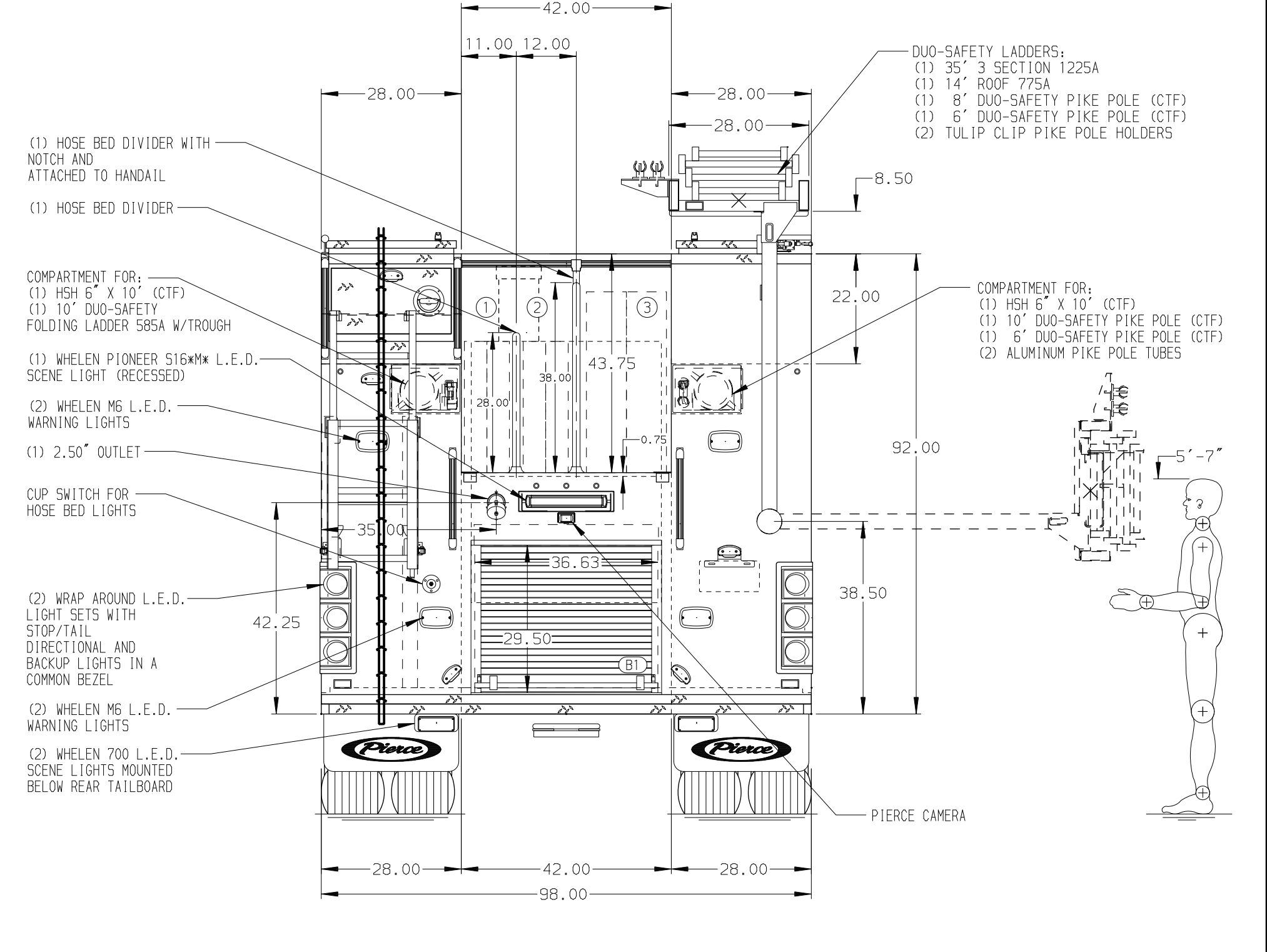


- HOSEBED CAPACITIES
- ① - 700' OF 2.50" DJP HOSE
 - ② - 700' OF 2.50" DJP HOSE
 - ③ - 1000' OF 5.00" DJP HOSE



ALUMINUM BODY

SIDE ROLL AND FRONTAL IMPACT PROTECTION

NOTE
DIMENSIONS SHOWN ARE APPROXIMATE AND ARE SUBJECT TO MINOR DEVIATIONS AS MAY OCCUR OR BE NECESSARY IN CONSTRUCTION. MINOR DETAILS NOT SHOWN.

- 1. PACOR DEF TANK MOUNTED UNDER CAB ON THE DRIVER'S SIDE
- 2. BATTERY CHARGER INDICATOR LOCATED ON DRIVER'S SEAT RISER
- 3. DUAL L.E.D. LIGHT STRIPS LOCATED IN HOSE BED
- 4. DUAL L.E.D. LIGHT STRIPS LOCATED IN CARGO AREA
- 5. THREE ADDITIONAL POLY TRAYS SHIPPED LOOSE

REV	DATE	BY	CH	ENFORCER	CHASSIS DATA	TITLE
1	14FEB24	SAM	AST		1500-D-750P, 730G WATER W/20G FOAM, 189" HDRP	
2	15NOV23	SAM	JKR		MAKE	
3	16OCT23	SAM	AST		PIERCE	
4	12JUL23	SAM	PHA		MODEL	
5						

	JOB NO.	38197
	SCALE	DATE
TITLE	1500-D-750P, 730G WATER W/20G FOAM, 189" HDRP (3) SPEEDLAYS, HYD LADDER RACK, DELUGE, GENERATOR	DRAWN BY
FOR	MARQUETTE CITY FIRE DEPARTMENT MARQUETTE, MICHIGAN	CHECKED BY
DWG NO.	38197AD-SH1	SHEET SIZE
		SHEET NO.
		1 OF 2