

Pumper, PUC

BODY

Pumper, PUC, Aluminum

CHASSIS

Enforcer Chassis, PUC

CHASSIS AXLE, FRONT, CUSTOM

19,500 Lb TAK-4 Axle

AXLE, REAR

24,000 Lb Meritor Axle

ENGINE

455 HP Cummins X12 Engine

TRANSMISSION

Allison 5th Gen, 4500 EVS P

BUMPER

19" Extended Stainless Steel

CAB

7010 Enforcer Cab, PUC

BODY

WATER TANK

500 Gallon Poly Water Tank

COMPT, PUMPER, REAR

40.50" FF RollUp Rear Compt w/Tailboard, PUC

COMPT, PUMPER, LEFT SIDE

177" RollUp/Lap Full Height & Depth Front & Rear, PUC

COMPT, PUMPER, RIGHT SIDE

177" Lap Full Height & Depth Front & Rear, PUC

FIRE SUPPRESSION

PUMPHOUSE

Control Zone, PUC

PUMP

1500 GPM Pierce PUC

CROSSLAYS, 1.50"

(2) 1.50", Poly Trays, 200'

CROSSLAYS, 2.50"

(1) 2.50", Poly Tray, 200'

GENERATOR

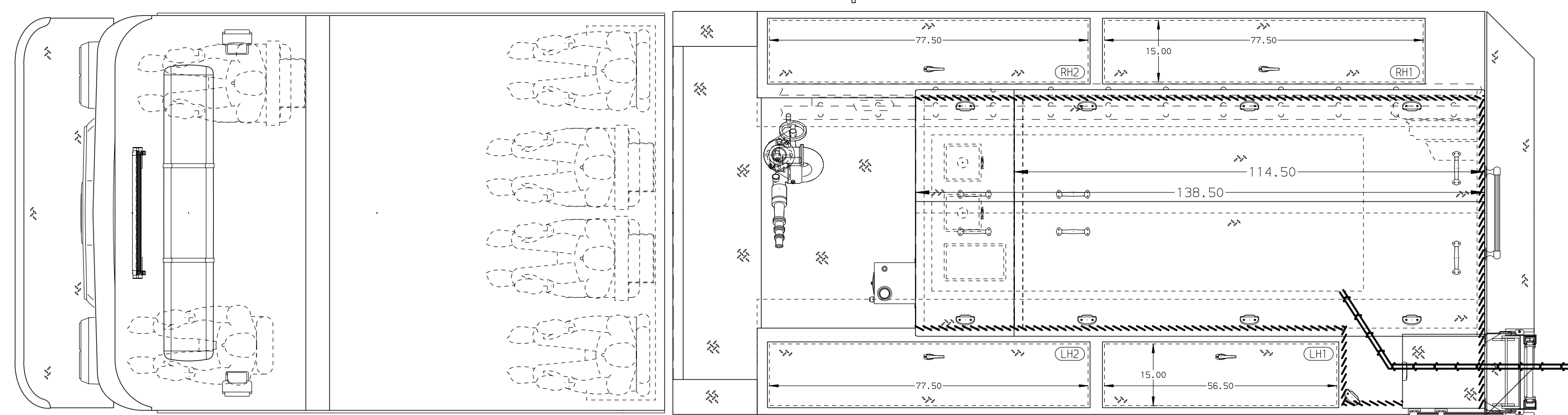
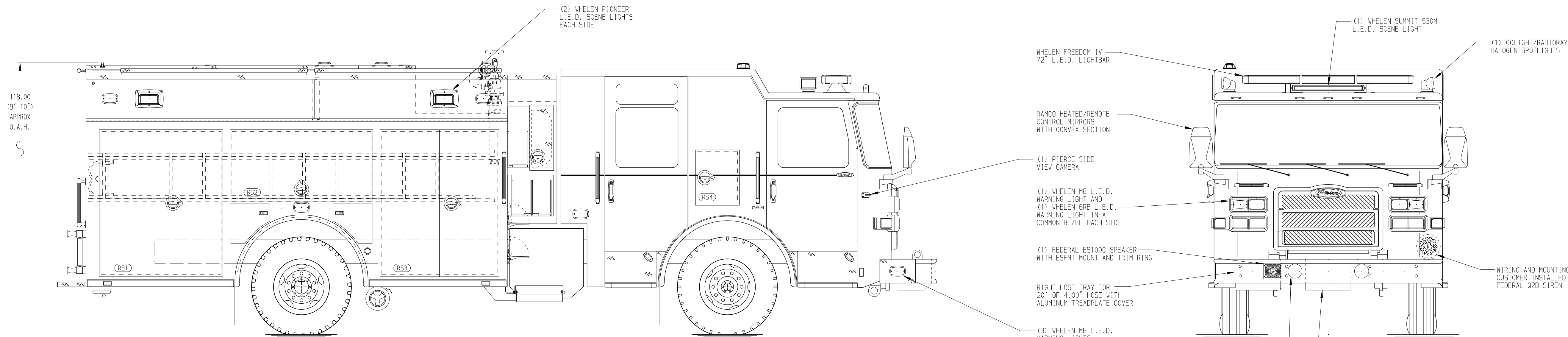
Generator Not Required

Foam System

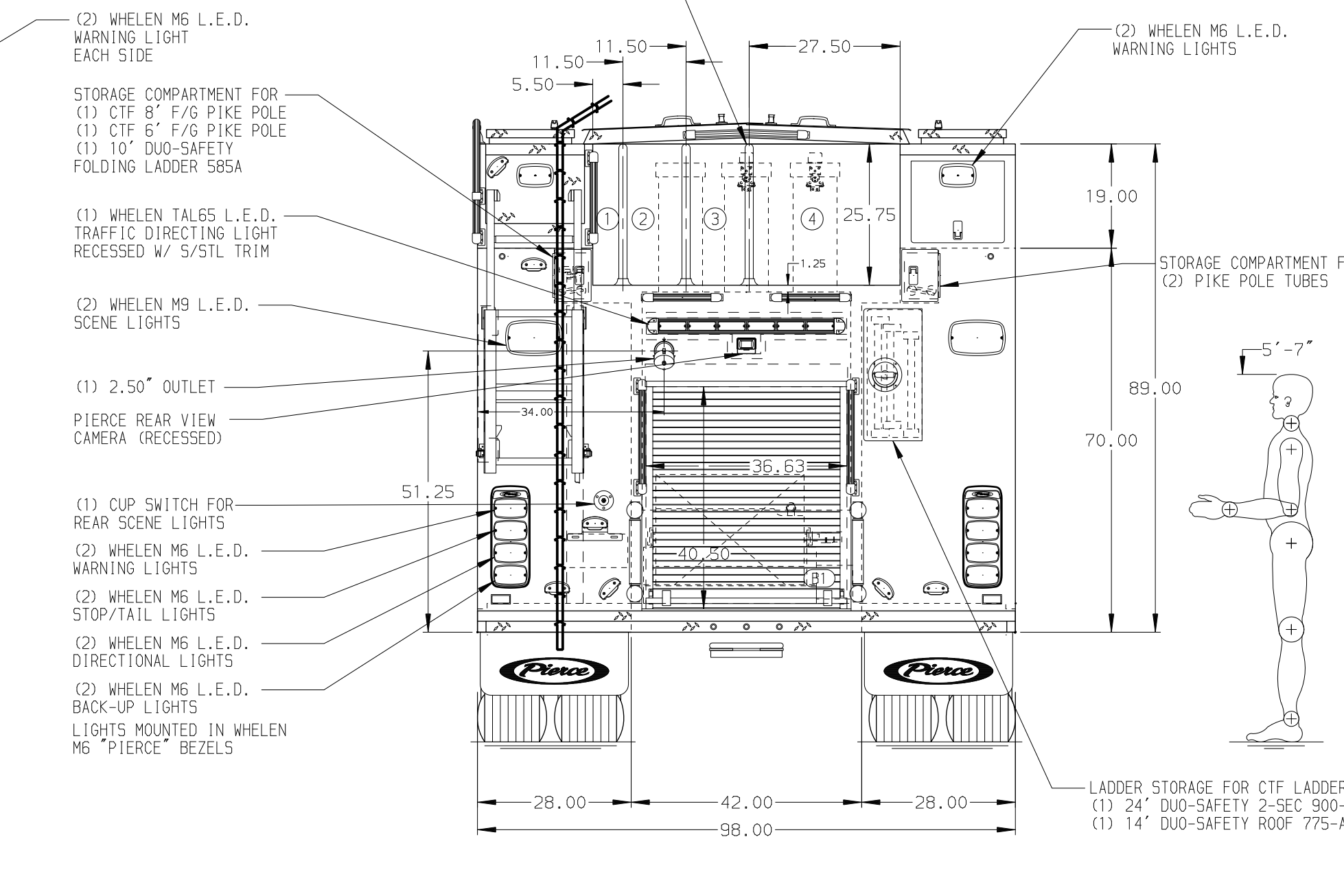
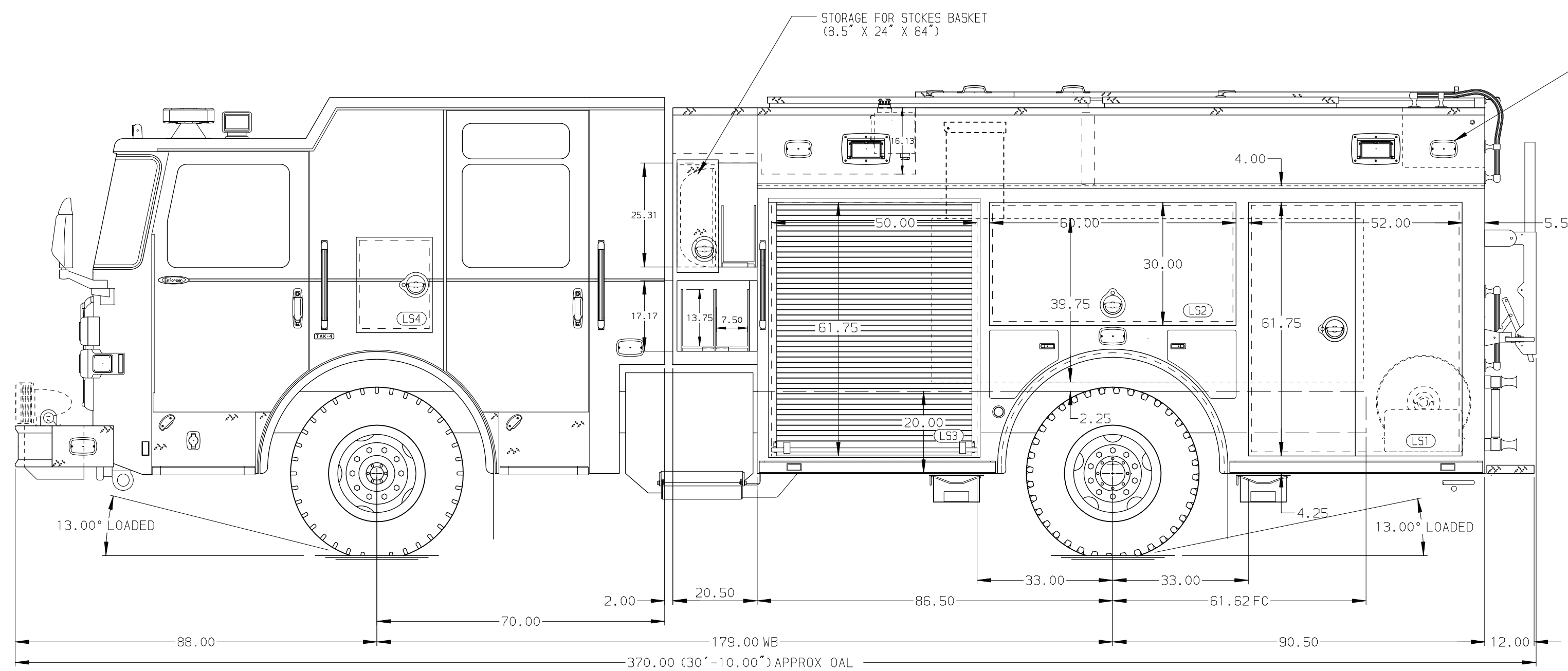
Husky 12 Dual Agent Foam System

Foam Cell

30 Gallon Foam Cell, Not Reduced Water, PUC



| HOSEBED CAPACITY | |
|------------------|------------------------------|
| BED 1 | 250' OF 1.75" D.J. POLY HOSE |
| BED 2 | 400' OF 2.50" D.J. POLY HOSE |
| BED 3 | 400' OF 2.50" D.J. POLY HOSE |
| BED 4 | 800' OF 4.00" D.J. POLY HOSE |



NOTE
DIMENSIONS SHOWN ARE APPROXIMATE AND ARE SUBJECT TO MINOR DEVIATIONS AS MAY OCCUR OR BE NECESSARY IN CONSTRUCTION. MINOR DETAILS NOT SHOWN.

- SHORELINE RECEPTACLE WITH KUSSMAUL SUPER AUTO-EJECT LOCATED IN DRIVER SIDE STEPWELL
- AIR OUTLET WITH SHUT OFF VALVE LOCATED IN L53
- BATTERY CHARGER LOCATED IN COMPARTMENT PER SHOP ORDER
- BATTERY CHARGE INDICATOR LOCATED ON THE DRIVER SIDE SEAT RISER
- EIGHT ADJUSTABLE SHELVES LOCATED PER SHOP ORDER
- ONE TILTING/SLIT-OUT TRAY LOCATED PER SHOP ORDER
- ONE FLOOR MOUNTED SLIDE-OUT TRAY LOCATED PER SHOP ORDER
- SEALED PARTITION BETWEEN COMPARTMENTS L51/BA & R51/B1
- HANNAY BOOSTER REEL MODEL SBEF34-23-24 WITH CAPACITY FOR 200' OF 1.00" BOOSTER HOSE LOCATED IN COMPARTMENT B1

| CUSTOMER APPROVAL | | | |
|-------------------|------|----|----|
| APPROVED BY: | | | |
| DATE: | | | |
| REV | DATE | BY | CH |
| | | | |

| | | | |
|----------|------------------------------------|------------|-----------|
| | | JOB NO. | 38211 |
| | | SCALE | DATE |
| TITLE | Pierce PUC Pumper Approval Drawing | DRAWN BY | MMF |
| MAKE | - | CHECKED BY | COL |
| FOR | City of Lompoc | SHEET SIZE | SHEET NO. |
| MODEL | DWG NO. | 38211AD | |
| ENFORCER | | D | 1 OF 1 |