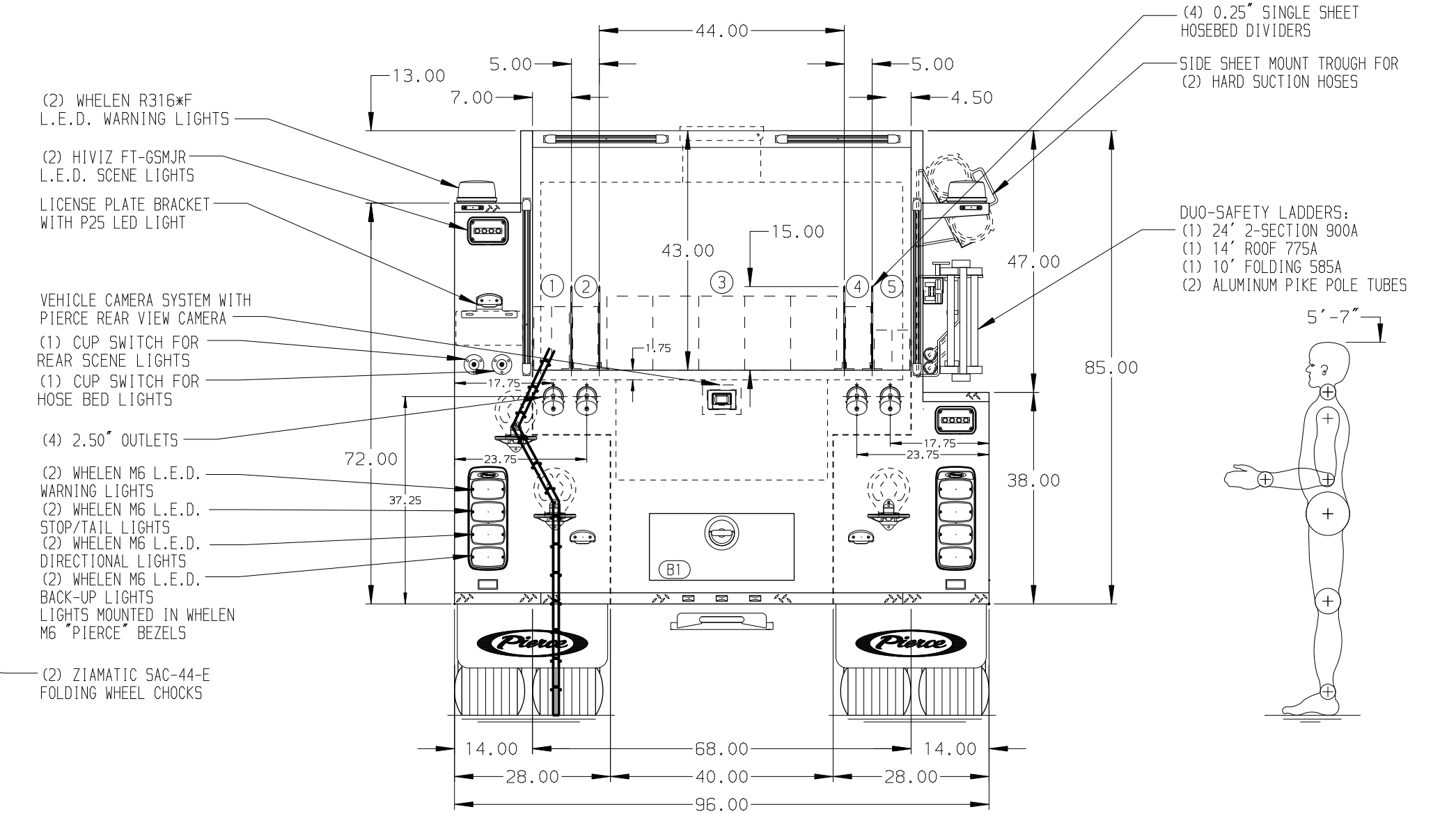
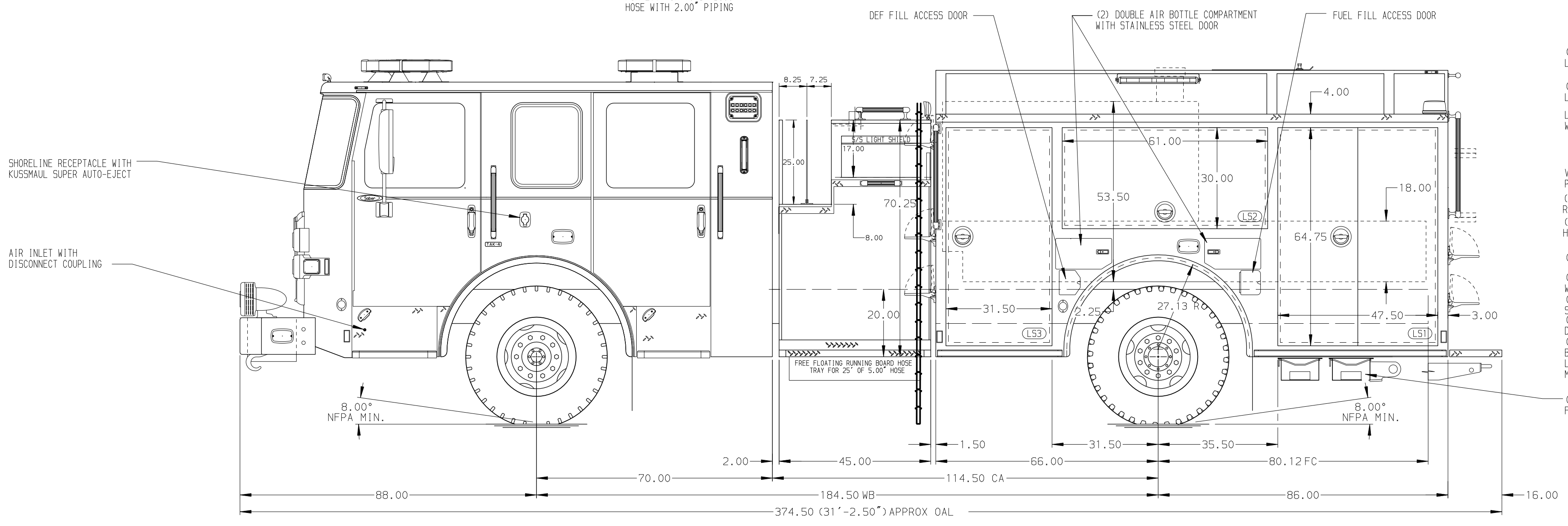


- HOSEBED CAPACITIES**
- ① 400' OF 1.75" MERCEDES HOSE
 - ② 200' OF 2.50" MERCEDES HOSE
 - ③ 1000' OF 5.00" MERCEDES HOSE
 - ④ 200' OF 2.50" MERCEDES HOSE
 - ⑤ 250' OF 1.75" MERCEDES HOSE



ALUMINUM BODY

MAXIMUM O.A.H. 118"

FRONTAL IMPACT PROTECTION

CUSTOMER APPROVAL
 APPROVED BY: _____
 DATE: _____



JOB NO. 38224
 SCALE 1:24
 DATE

NOTE
 DIMENSIONS SHOWN ARE APPROXIMATE AND ARE SUBJECT TO MINOR DEVIATIONS AS MAY OCCUR OR BE NECESSARY IN CONSTRUCTION. MINOR DETAILS NOT SHOWN.

- 1. BATTERY CHARGER LOCATED IN COMPARTMENT PER ORDER
- 2. BATTERY CHARGER INDICATOR LOCATED ON DRIVER'S SEAT RISER
- 3. DUAL L.E.D. LIGHT STRIPS LOCATED IN HOSE BED
- 4. REVERSED HINGED DOOR ON COMPARTMENT L53
- 5. TWO FULL WIDTH/DEPTH ADJUSTABLE SHELVES IN COMPARTMENTS PER ORDER

CHASSIS DATA	TITLE	1500-D-1000P, 152" FH FDLER L5, LOW FDLER RS
MAKE	FOR	(2) X-LAYS, LADDER BRACKETS
PIERCE	FOR	ATLANTIC EMERGENCY SOLUTIONS INC
MODEL	FOR	MANASSAS, VIRGINIA
REV	DWG NO.	38224AD

DRAWN BY BTH 14SEP22
 CHECKED BY CDU 16SEP22
 SHEET SIZE D SHEET NO. 1 OF 1