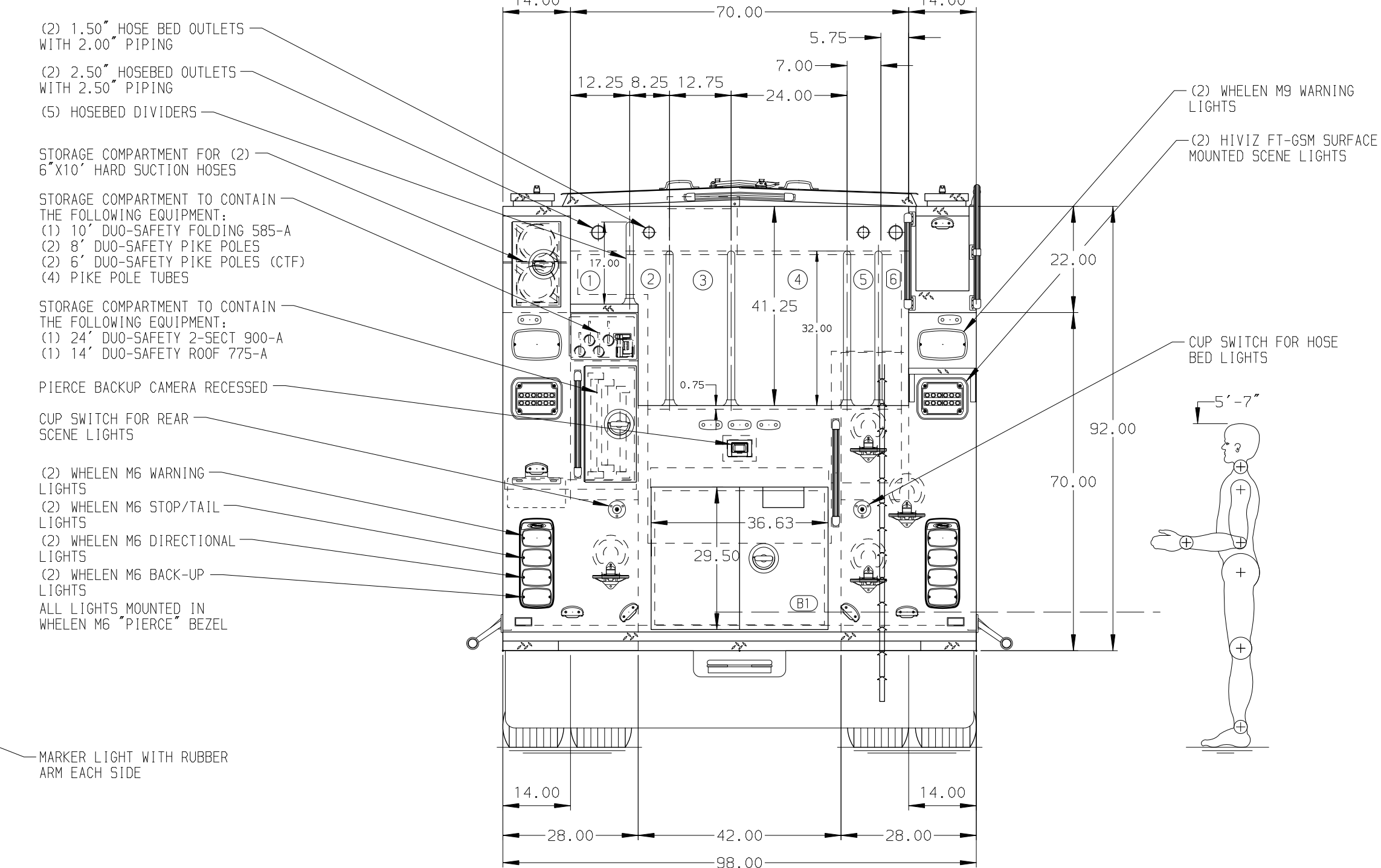
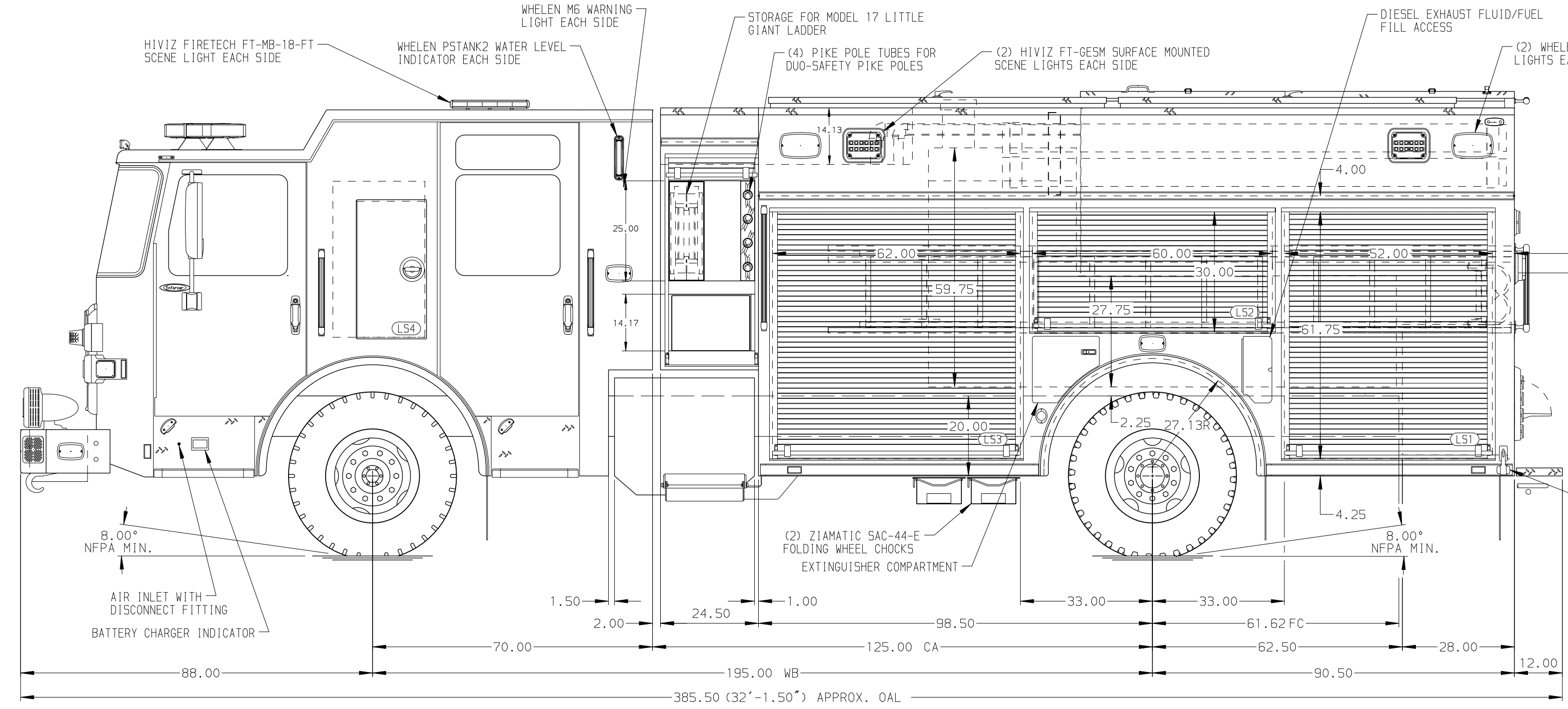


- HOSEBED CAPACITIES
- ① 250' OF 2.50" D.J. POLY HOSE
 - ② 250' OF 1.75" D.J. POLY HOSE
 - ③ 300' OF 3.00" D.J. POLY HOSE
 - ④ 1000' OF 4.00" D.J. POLY HOSE
 - ⑤ 250' OF 1.75" D.J. POLY HOSE
 - ⑥ 250' OF 2.50" D.J. POLY HOSE



ALUMINUM BODY FRONTAL IMPACT PROTECTION

NOTE
DIMENSIONS SHOWN ARE APPROXIMATE AND ARE SUBJECT TO MINOR DEVIATIONS AS MAY OCCUR OR BE NECESSARY IN CONSTRUCTION. MINOR DETAILS NOT SHOWN.

1. BATTERY CHARGER LOCATED PER ORDER
2. BATTERY CHARGER INDICATOR LOCATED PER ORDER
3. 120V SHORELINE RECEPTACLE LOCATED PER ORDER
5. THREE 120V DUPLEX RECEPTACLES LOCATED IN CAB PER ORDER
6. TWO 120V DUPLEX RECEPTACLES IN REAR BODY COMPARTMENT LOCATED PER ORDER

REV	DATE	BY	CH	ENFORCER
02NOV23	BST	AST		CHASSIS DATA
10OCT23	BST	JLL		MAKE
27JUN23	BST	JLL		PIERCE
10MAY23	BST	JLL		MODEL

	JOB NO.	38227
	SCALE	DATE
TITLE	1500-D-750P, 189" PUC PUMPER BODY, DELUGE LADDERS BETWEEN TANK AND BODY	DRAWN BY
FOR	MILLIS FIRE DEPARTMENT	CHECKED BY
	MILLIS, MASSACHUSETTS	PHA
DWG NO.	38227AD	SHEET SIZE
		SHEET NO.
		1 OF 1