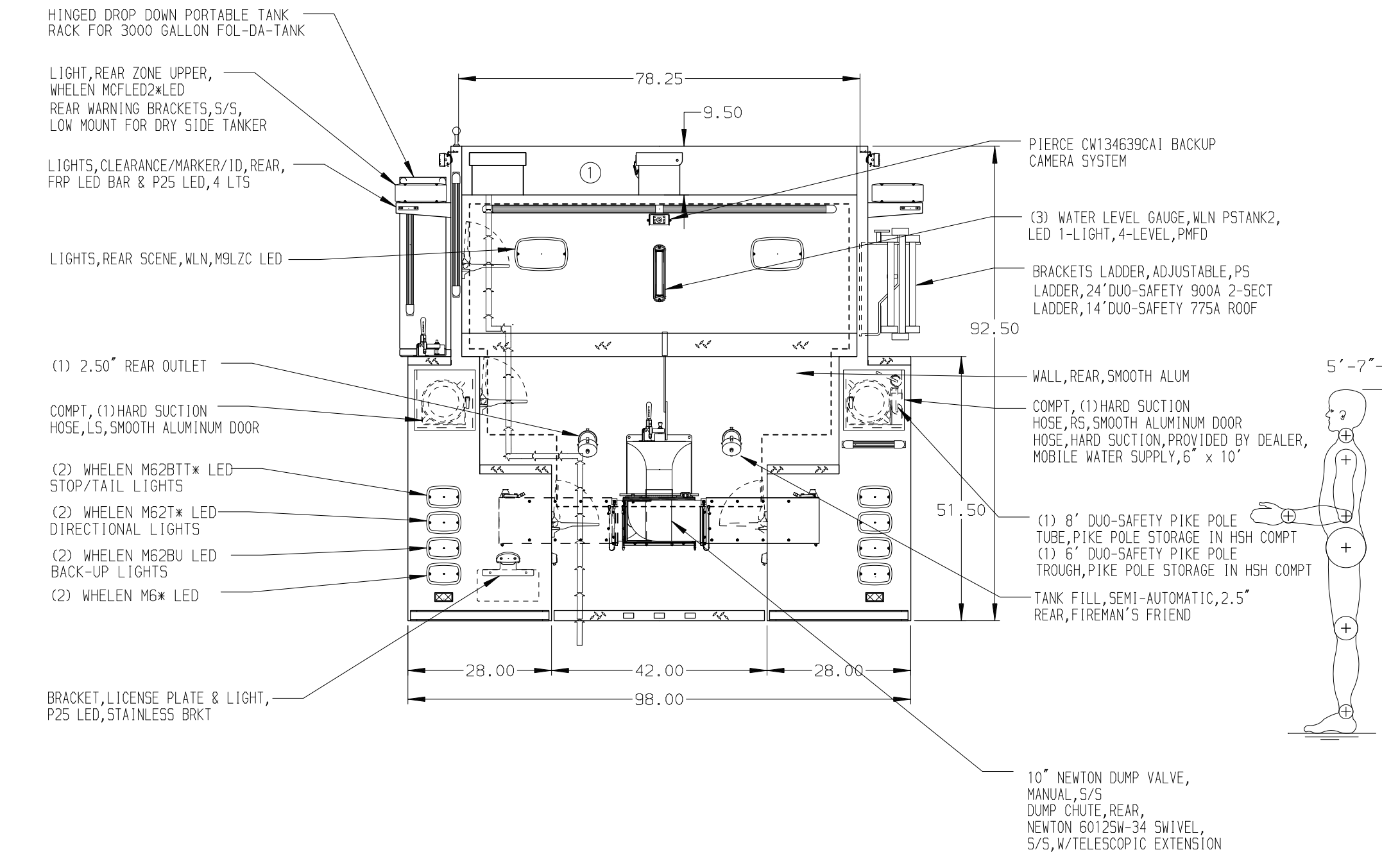


HOSEBED CAPACITIES
 ① 1000' OF 4.00" D.J. POLYESTER HOSE



ALUMINUM BODY

NOTE
 DIMENSIONS SHOWN ARE APPROXIMATE AND ARE SUBJECT TO MINOR DEVIATIONS AS MAY OCCUR OR BE NECESSARY IN CONSTRUCTION. MINOR DETAILS NOT SHOWN.

REV	DATE	BY	CH	T880
23JUN23	RHU	DDR		CHASSIS DATA
02MAY23	JLA	JAP		MAKE
22FEB23	JLA	AJA		KW
15FEB23	JLA	RW1		MODEL

		JOB NO.	38229
		SCALE	DATE
TITLE	1500-D-2500P, 2480 WATER/20FOAM, 195" TANKER DRYSIDE 2ND GEN, 52" SIDE CONTROL, (2) 1.5", (1) 2.5" CROSSLAYS	DRAWN BY	RHU
FOR	BELCHERTOWN FIRE DEPARTMENT BELCHERTOWN, MA	CHECKED BY	AJA
DWG NO.	38229AD	SHEET SIZE	D
		SHEET NO.	1 OF 1