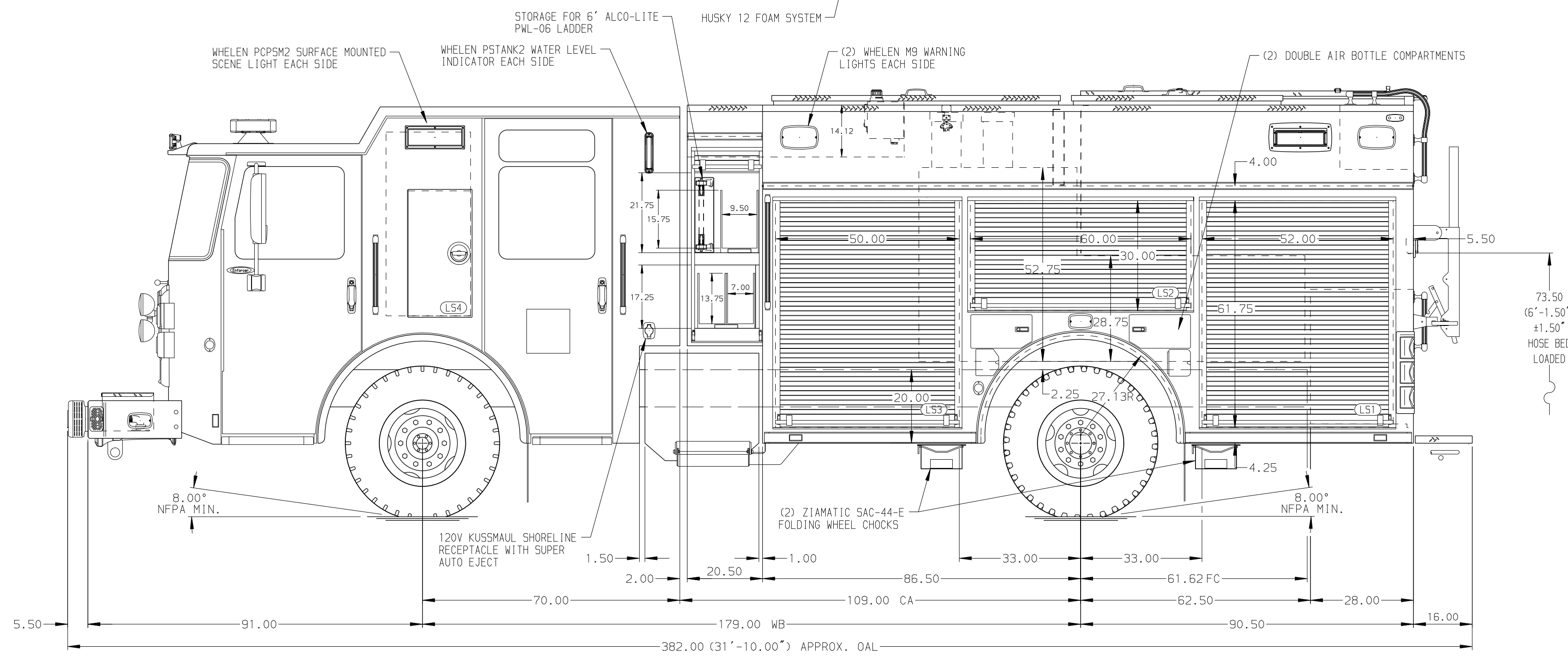
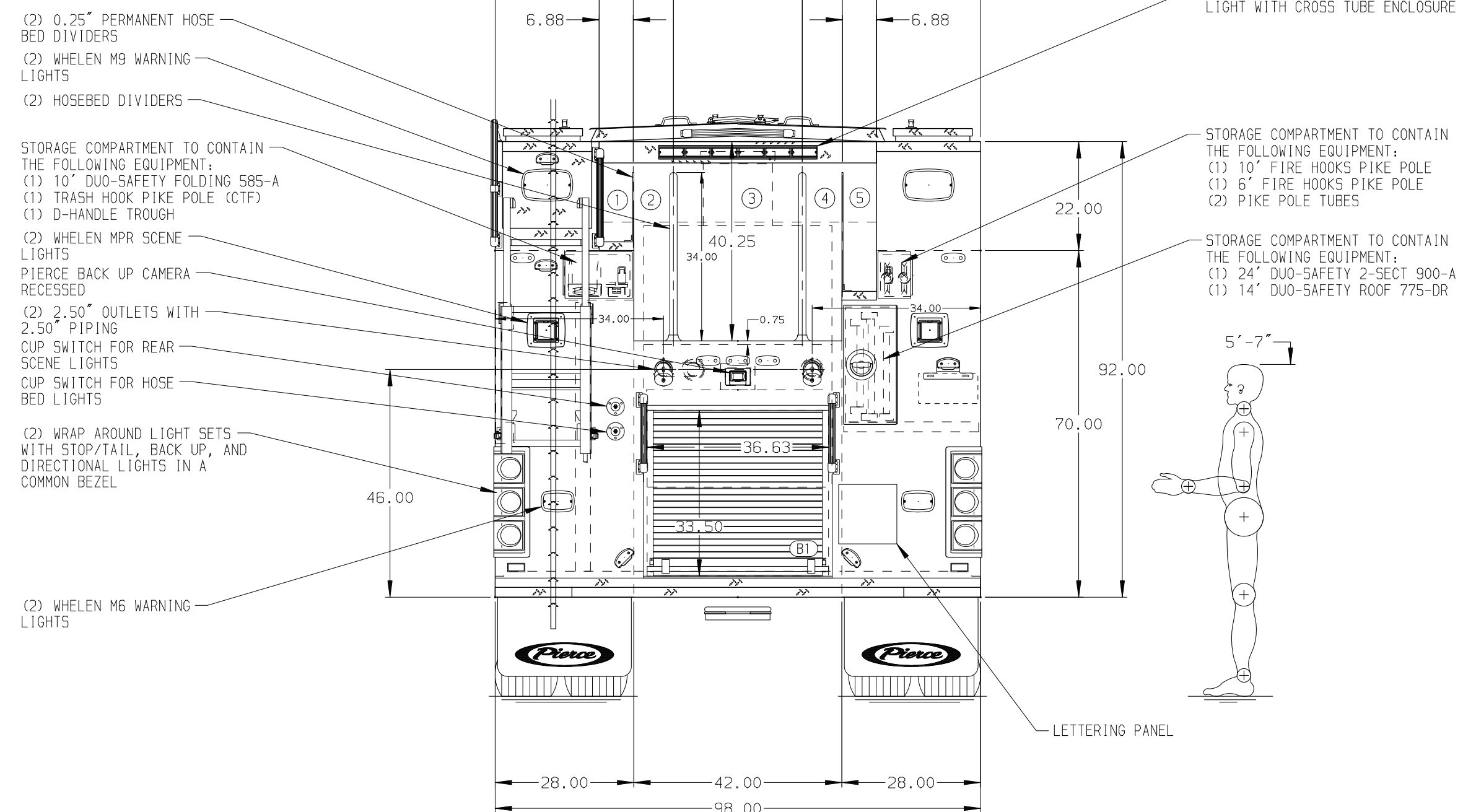


- HOSEBED CAPACITIES**
- ① OPEN BAY
  - ② 300' OF 2.50" D.J. POLY HOSE
  - ③ 800' OF 5.00" D.J. POLY HOSE
  - ④ 300' OF 2.50" D.J. POLY HOSE
  - ⑤ 300' OF 1.75" D.J. POLY HOSE



**ALUMINUM BODY**

**NOTE**  
 DIMENSIONS SHOWN ARE APPROXIMATE AND ARE SUBJECT TO MINOR DEVIATIONS AS MAY OCCUR OR BE NECESSARY IN CONSTRUCTION. MINOR DETAILS NOT SHOWN.

- 1. ONSPOT AUTOMATIC TIRE CHAINS TO BE PROVIDED AT REAR
- 2. AIR INLET WITH DISCONNECT FITTING LOCATED ON LEFT SIDE PUMP PANEL
- 3. TWO 120V DUPLEX RECEPTACLES LOCATED IN CAB PER ORDER

REV	DATE	BY	CH	ENFORCER
13MAY24	BST	JBL		CHASSIS DATA
26APR24	BST	JBL		MAKE
15MAR24	BST	JBL		PIERCE
16JAN24	BST	JBL		MODEL
04DEC23	BST	JBL		

		JOB NO.	38231
		SCALE	DATE
TITLE 1500-D-530P, 500 GAL WATER W/30 GAL FOAM CELL 177" PUC RESCUE BODY, LADDERS THRU BODY, DELUGE	DRAWN BY BST	060CT23	
		FOR	BOWLING GREEN FIRE DEPARTMENT BOWLING GREEN, KENTUCKY
DWG NO.	38231AD-SH1	SHEET SIZE	SHEET NO.
		D	1 OF 2