

Pumper, PUC

BODY

Pumper, PUC, Aluminum

CHASSIS

Velocity Chassis, PUC (Big Block)

CHASSIS
AXLE, FRONT, CUSTOM
22,800 Lb TAK-4 Axle

AXLE, REAR
27,000 Lb Meritor Axle

ENGINE
500 HP Cummins X12 Engine

TRANSMISSION
Allison 5th Gen, 4000 EVS P

BUMPER
22" Extended Stainless Steel

CAB
7010 Velocity FR Cab, PUC

BODY

WATER TANK

750 Gallon Poly Water Tank

COMPT, PUMPER, REAR
33.50" FF RollUp Rear Compt w/Tailboard, PUC

COMPT, PUMPER, LEFT SIDE
214" RollUp Full Height & Depth Front & Rear, PUC

COMPT, PUMPER, RIGHT SIDE
214" RollUp Full Height & Depth Front & Rear, PUC

FIRE SUPPRESSION

PUMPHOUSE

Control Zone, PUC

PUMP

1500 GPM Pierce PUC

CROSSLAYS, 1.50"
(2) 1.50", Poly Trays, 200'

CROSSLAYS, 2.50"
(1) 2.50", Poly Tray, 200'

GENERATOR

Generator Not Required

Foam System

Husky 3 Single Agent Foam System

Foam Cell

10 Gallon Foam Cell, Reduced Water, PUC

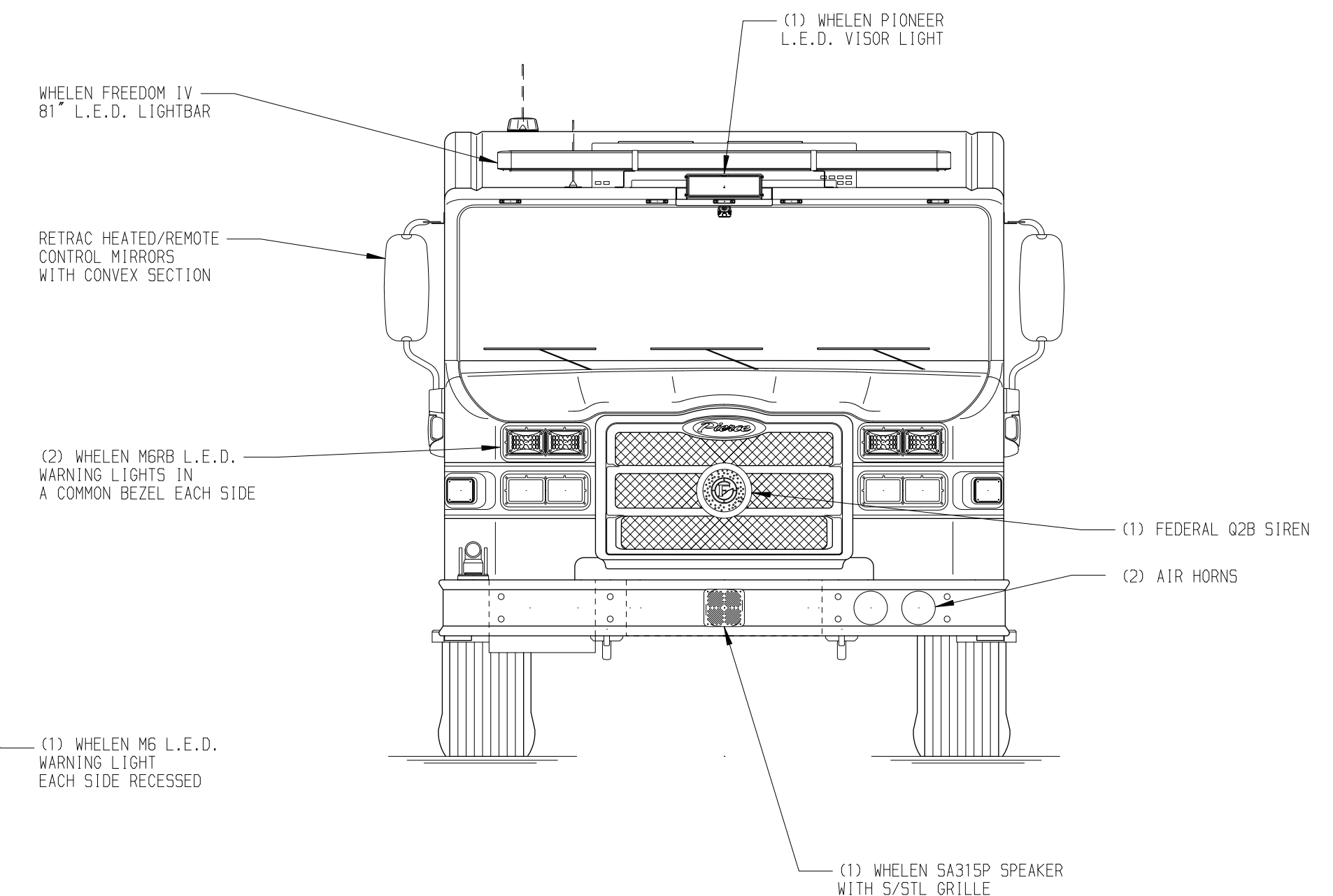
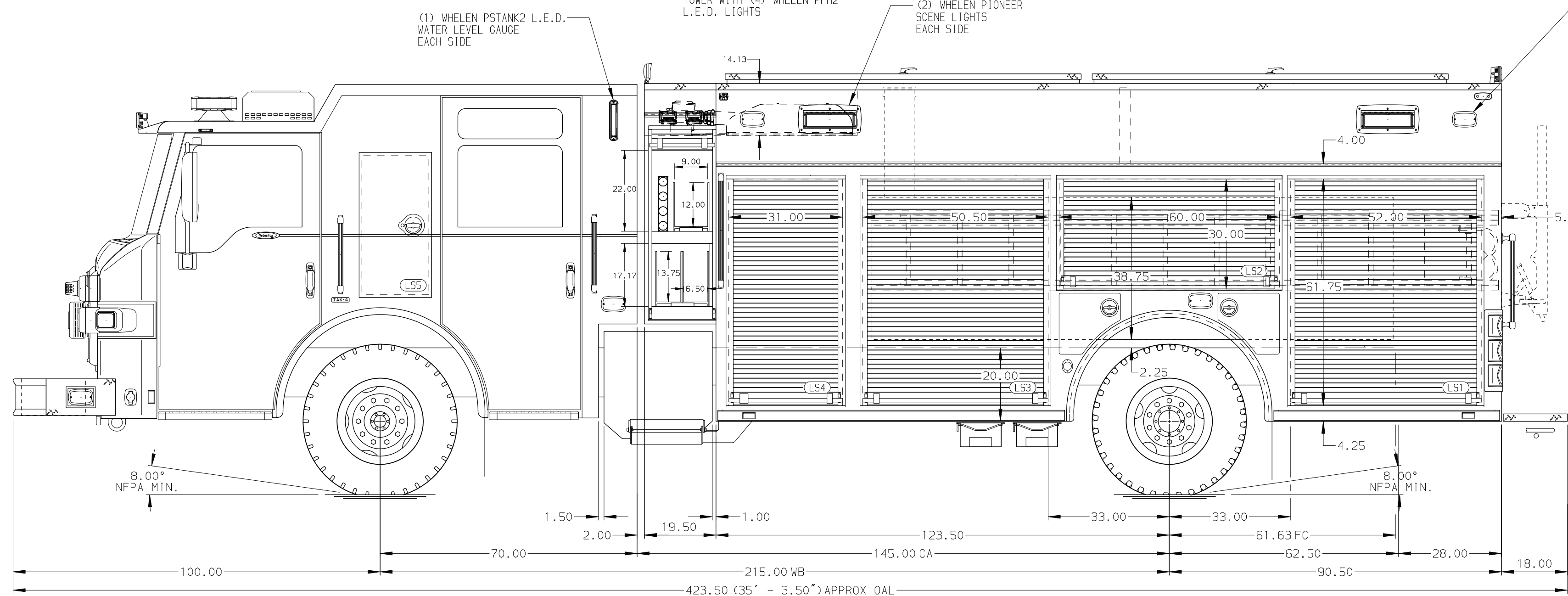
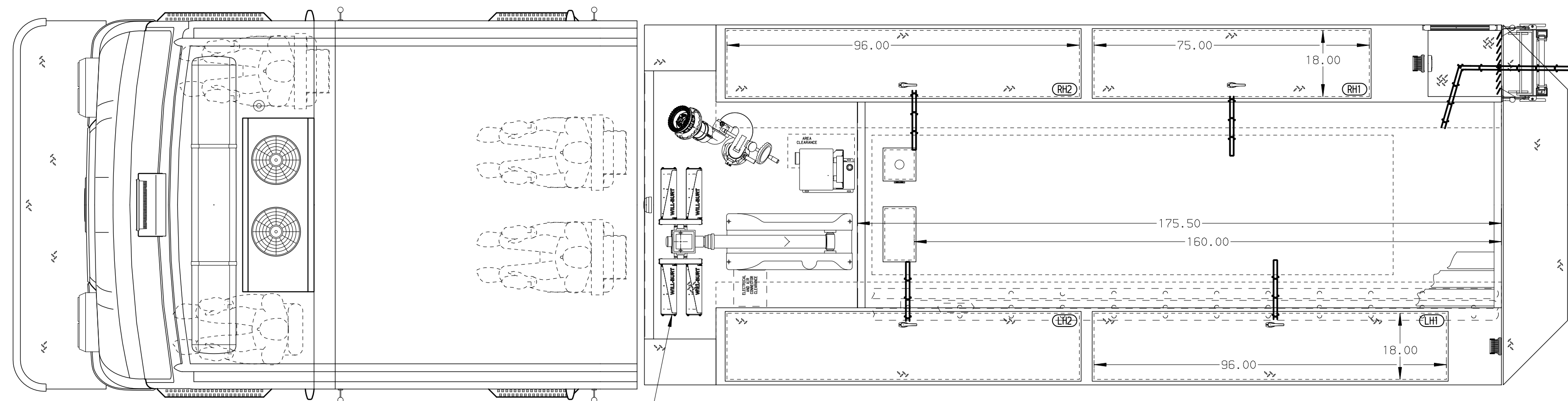
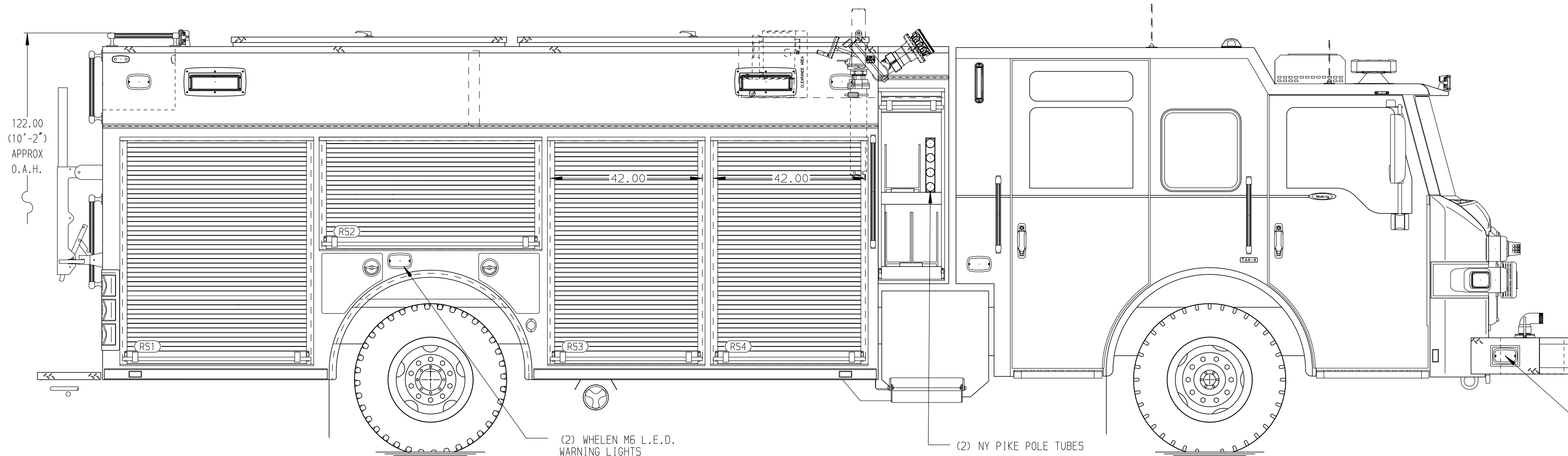
Side Roll and Frontal Impact Protection

NOTE

DIMENSIONS SHOWN ARE APPROXIMATE AND ARE SUBJECT TO MINOR DEVIATIONS AS MAY OCCUR OR BE NECESSARY IN CONSTRUCTION. MINOR DETAILS NOT SHOWN.

- ONE 1.50 OUTLET WITH 2.00 PIPING AND SWIVEL LOCATED IN CENTER BUMPER TRAY
- SHOULDER RECEPTACLE WITH KUSMAUL SUPER AUTO-EJECT LOCATED ON DRIVER SIDE CAB CORNER
- AIR INLET WITH DISCONNECT COUPLING IN THE DRIVER SIDE PUMP PANEL
- BATTERY CHARGER LOCATED PER ORDER
- BATTERY CHARGE INDICATOR LOCATED NEAR DRIVER SEAT RISER WITH BRACKET
- THREE ADJUSTABLE SHELVES LOCATED PER ORDER
- TOW FLOOR MOUNTED SLIDE-OUT TRAY LOCATED PER ORDER
- ONE FIXED SHELF LOCATED PER SHOP ORDER
- FIVE SLIDE-OUT TRAYS LOCATED PER SHOP ORDER
- THREE TILT/SLIDE-OUT TRAYS LOCATED PER SHOP ORDER
- ONE CTECH FOUR DRAWER ASSEMBLY LOCATED PER SHOP ORDER
- ONE SWING-OUT TOOLBOARD LOCATED PER SHOP ORDER
- ONE VERTICAL PEGBOARD LOCATED PER SHOP ORDER
- PEGBOARD ON BACK WALL LOCATED PER SHOP ORDER
- HOSE STORAGE RACK LOCATED PER SHOP ORDER

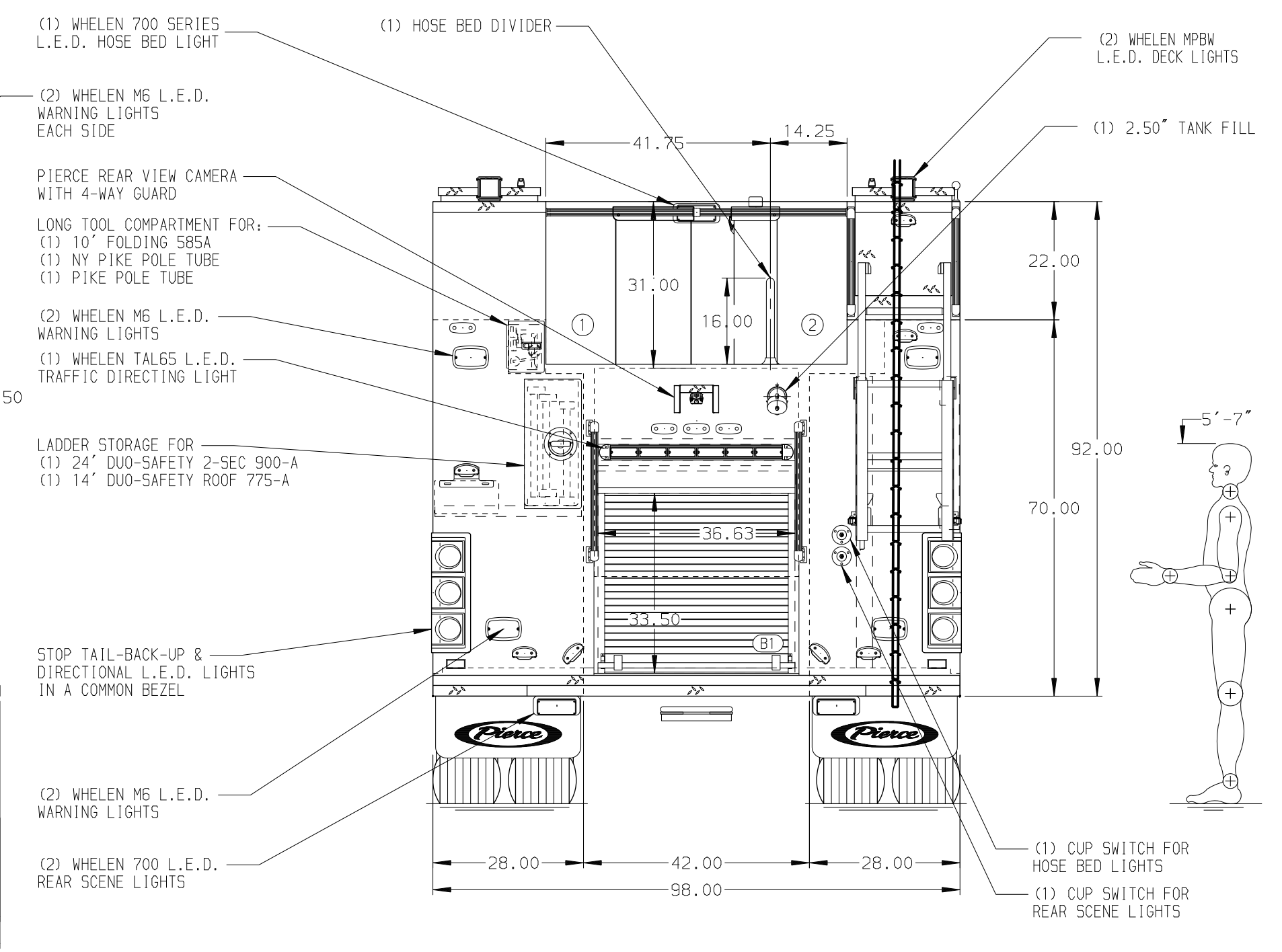
MAXIMUM O.A.H. 138"



HOSEBED CAPACITY

BED 1
1200' OF 5.00" D.J. POLY HOSE

BED 2
800' OF 2.50" D.J. POLY HOSE



CUSTOMER APPROVAL			
APPROVED BY:			
DATE:			
CHASSIS DATA	TITLE	Pierce PUC Pumper Approval Drawing	
MAKE	FOR	City of Arkadelphia	
MODEL	DWG NO.	38251AD	
REV	DATE	BY	CH

Pierce MANUFACTURING INC.		JOB NO.	38251
SCALE	1:24	DATE	
DRAWN BY	MMF	DATE	10MAY22
CHECKED BY	COL	DATE	10MAY22
SHEET SIZE	D	SHEET NO.	1 OF 1