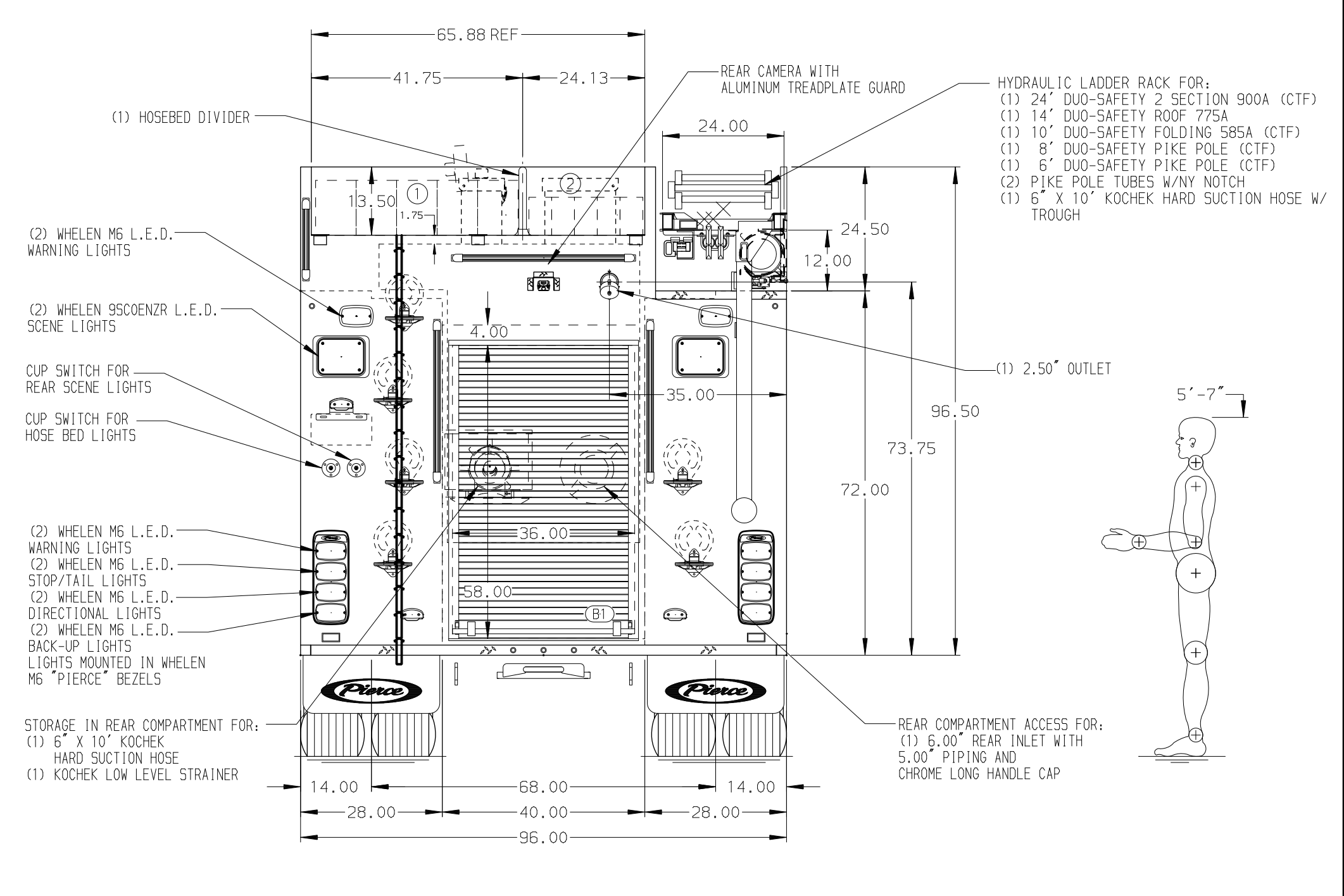


HOSEBED CAPACITIES
 ① - 800' OF 5.00" DJP HOSE
 ② - 500' OF 2.50" DJP HOSE



ALUMINUM BODY

NOTE
 DIMENSIONS SHOWN ARE APPROXIMATE AND ARE SUBJECT TO MINOR DEVIATIONS AS MAY OCCUR OR BE NECESSARY IN CONSTRUCTION. MINOR DETAILS NOT SHOWN.

- ONSPOT AUTOMATIC TIRE CHAINS
- BATTERY CHARGER LOCATED BEHIND DRIVER'S SEAT
- BATTERY CHARGER INDICATOR LOCATED ON DRIVER'S SEAT RISER
- DUAL L.E.D. LIGHT STRIPS LOCATED IN HOSE BED
- L.E.D. LIGHT STRIP LOCATED ON THE FRONT OF THE HOSEBED
- SEVEN DRIP PAN GUARDS FOR ROLL-UP DOORS LOCATED PER ORDER
- NINE DUAL L.E.D. LIGHT STRIPS LOCATED IN COMPARTMENTS PER ORDER
- DUAL L.E.D. LIGHT STRIPS IN CARGO AREA
- EIGHT FULL WIDTH/DEPTH ADJUSTABLE SHELVES LOCATED IN COMPARTMENTS PER ORDER
- ONE ADJUSTABLE TILTING SLIDE-OUT TRAY LOCATED IN COMPARTMENT PER ORDER
- THREE FLOOR MOUNTED SLIDE-OUT TRAYS LOCATED IN COMPARTMENTS PER ORDER
- ONE CATCH DRAWER ASSEMBLY LOCATED IN COMPARTMENT PER ORDER
- TWO SWING-OUT TOOLBOARDS WITH PEGBOARD PATTERN LOCATED IN COMPARTMENT PER ORDER
- PARTITION BETWEEN COMPARTMENTS L51/B1 AND R51/B1
- ONE EDGESTAR REFRIGERATOR LOCATED IN COMPARTMENT PER ORDER
- ONE 120V 7-PLACE RECEPTACLE STRIP MOUNTED IN CAB PER ORDER
- THREE 120V 5-PLACE RECEPTACLE STRIPS MOUNTED IN COMPARTMENTS PER ORDER
- ONE 120V DUPLEX RECEPTACLE LOCATED IN COMPARTMENT PER ORDER

REV	DATE	BY	CH	ENFORCER
29JUN23	SAM	AST		MAKE
16MAY23	SAM	AST		PIERCE
21MAR23	SAM	CZA		MODEL

		JOB NO.	38255
		SCALE	DATE
TITLE 2000-D-1025P, 1000G WATER W/25 FOAM, 161" BODY (3) CROSSLAYS, HYD LADDER RACK, DELUGE MOUNTING		DRAWN BY	14MAR23
FOR BLACK RIVER FALLS FIRE DEPARTMENT BLACK RIVER FALLS, WISCONSIN		CHECKED BY	14MAR23
DWG NO. 38255AD		SHEET SIZE	SHEET NO.
		D	1 OF 1