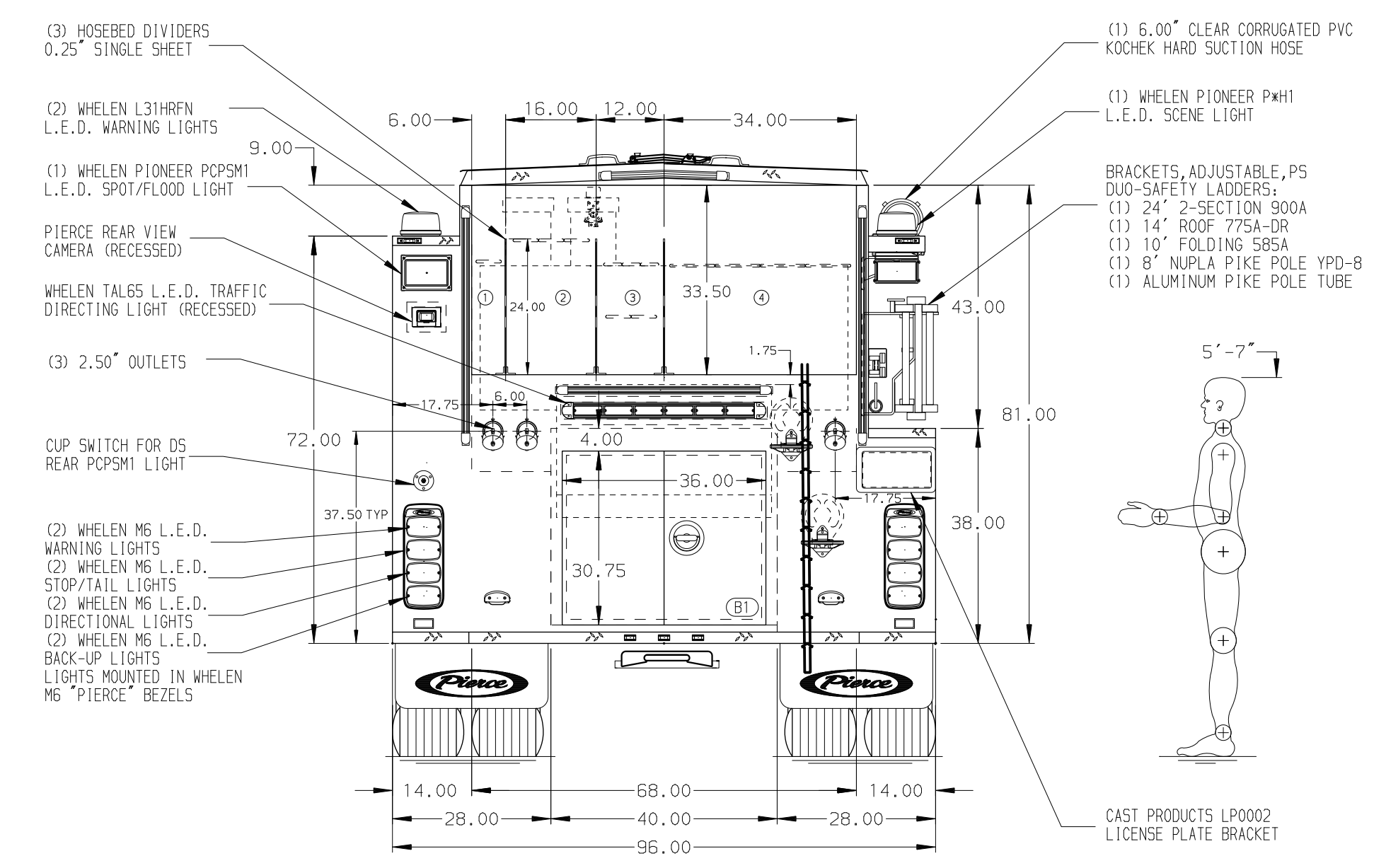
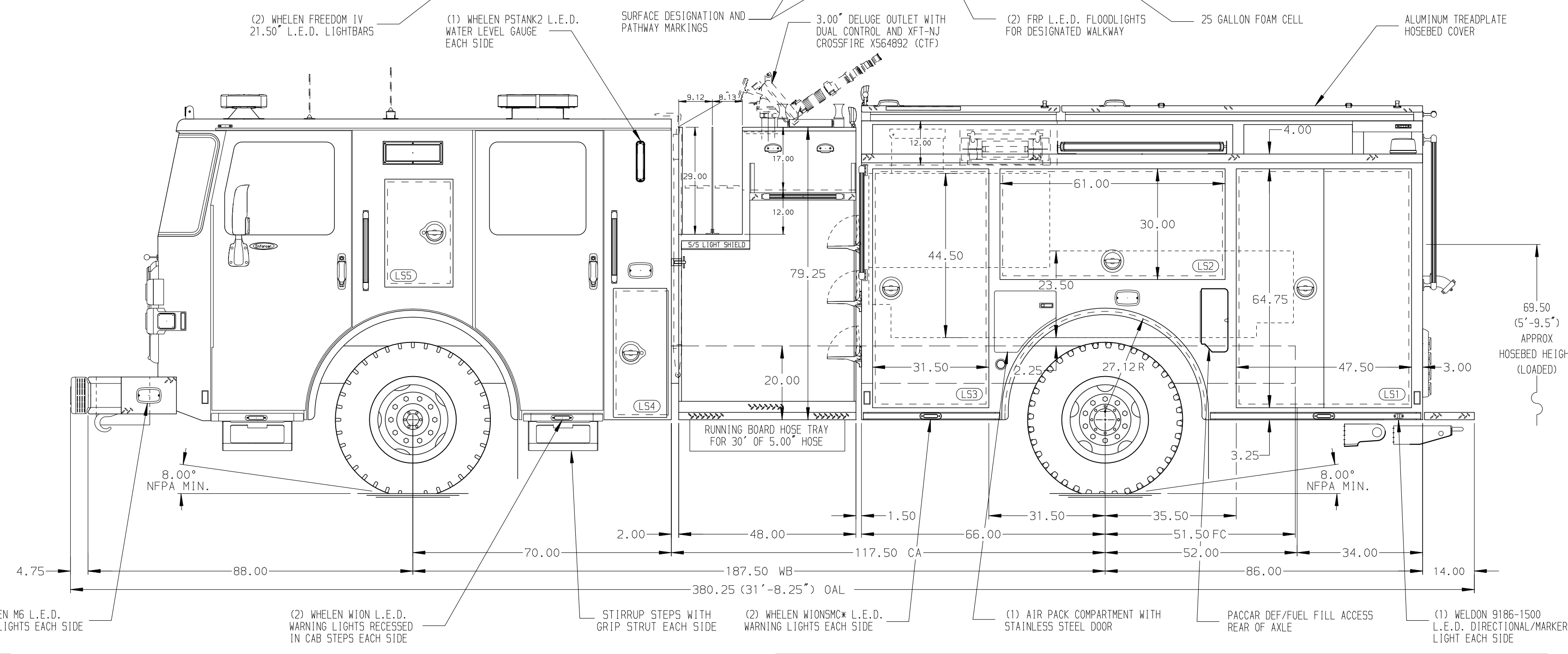


- HOSEBED CAPACITIES**
- ① - 200' OF 2.50\"/>



ALUMINUM BODY

SIDE ROLL AND FRONTAL IMPACT PROTECTION

NOTE
DIMENSIONS SHOWN ARE APPROXIMATE AND ARE SUBJECT TO MINOR DEVIATIONS AS MAY OCCUR OR BE NECESSARY IN CONSTRUCTION. MINOR DETAILS NOT SHOWN.

1. BATTERY CHARGER LOCATED BEHIND THE DRIVER'S SEAT
2. DUAL L.E.D. LIGHT STRIPS LOCATED ON THE FRONT OF THE HOSEBED
3. AIR INLET WITH DISCONNECT COUPLING LOCATED IN DRIVER SIDE STEP WELL
4. 120V SHORELINE KUSSMAUL AUTO EJECT LOCATED IN DRIVER SIDE STEP WELL
5. WORDEN SUPER GRIPPER WHEEL CHOCKS AND MOUNTING BRACKETS TBD AT FINAL
6. FOAMPRO 2001 SINGLE AGENT FOAM SYSTEM LOCATED PER SHOP ORDER

REV	DATE	BY	CH	ENFORCER
07NOV23	JJB	BSE		PIERCE
03OCT23	JJB	BSE		PIERCE

		JOB NO.	38277
		SCALE	DATE
TITLE	1500-D-625P, 600G WATER W/ 25G FOAM, 152\"/>		
FOR	COSUMNES COMMUNITY SERVICES DISTRICT ELK GROVE, CALIFORNIA	DRAWN BY	JJB
		CHECKED BY	BSE
DWG NO.	38277AD-SH1	SHEET SIZE	SHEET NO.
		D	1 OF 2