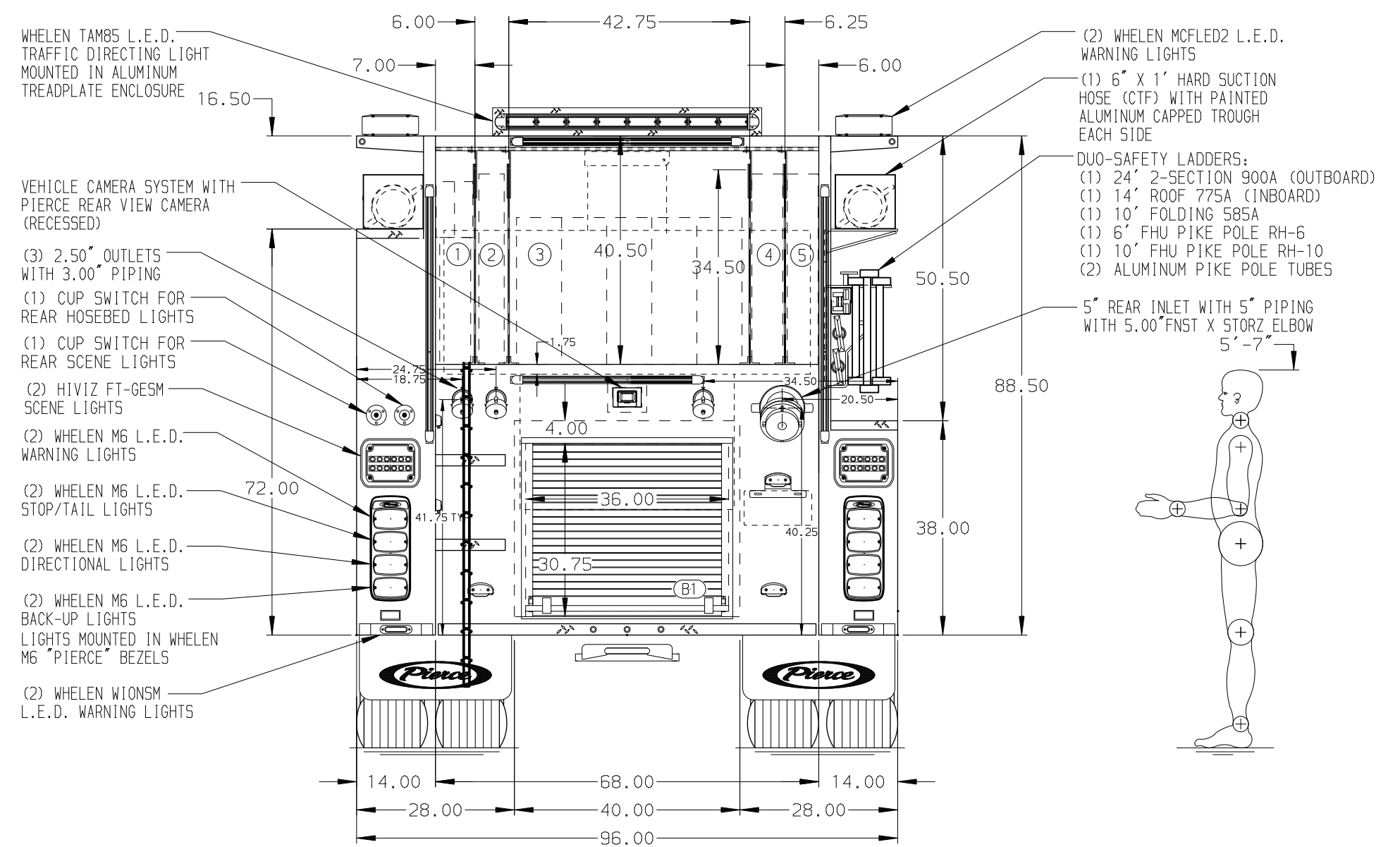


- HOSEBED CAPACITIES
- 200' OF 1.75" MERCEDES AQUAFLOW (TOP)
200' OF 3.00" MERCEDES AQUAFLOW (BOTTOM)
 - 300' OF 2.50" MERCEDES AQUAFLOW
 - 1200' OF 5.00" MERCEDES MEGAFLOW
 - 300' OF 3.00" MERCEDES AQUAFLOW
 - 300' OF 3.00" MERCEDES AQUAFLOW



ALUMINUM BODY

SIDE ROLL AND FRONTAL IMPACT PROTECTION

NOTE

DIMENSIONS SHOWN ARE APPROXIMATE AND ARE SUBJECT TO MINOR DEVIATIONS AS MAY OCCUR OR BE NECESSARY IN CONSTRUCTION. MINOR DETAILS NOT SHOWN.

- BATTERY CHARGER MOUNTED BEHIND DRIVER'S SEAT
- BATTERY CHARGER INDICATOR LOCATED ON DRIVER'S SEAT RISER
- DUAL L.E.D. LIGHT STRIPS LOCATED IN HOSE BED
- L.E.D. LIGHT STRIP LOCATED IN HOSE BEDS PER ORDER
- ONE DRIP PAN GUARD FOR ROLL-UP DOOR LOCATED PER ORDER
- REVERSED HINGED DOORS LOCATED PER ORDER
- ALUMINUM GRATING IN COMPARTMENTS LOCATED PER ORDER
- ALUMINUM PEGBOARD ON BACK WALL OF COMPARTMENTS LOCATED PER ORDER
- SIX 120V DUPLEX RECEPTACLES LOCATED PER ORDER



MANUFACTURING INC.

JOB NO. 38282

SCALE 1:24 DATE

DRAWN BY LME 08AUG23

CHECKED BY CDU 08AUG23

SHEET SIZE D SHEET NO. 1 OF 1

TITLE 2000-D-500P, 140" BODY, FH LS, LOW RS
(2) CROSSLAYS, DELUGE, BOOSTER REEL, LADDER BRACKETS
FOR MANHEIM TOWNSHIP FIRE RESCUE
LANCASTER, PENNSYLVANIA

DWG NO. 38282AD

REV	DATE	BY	CH	ENFORCER
1	12DEC23	JAM	CHR	MAKE
2	25OCT23	JAM	COS	PIERCE
3	18AUG23	LME	SJS	MODEL