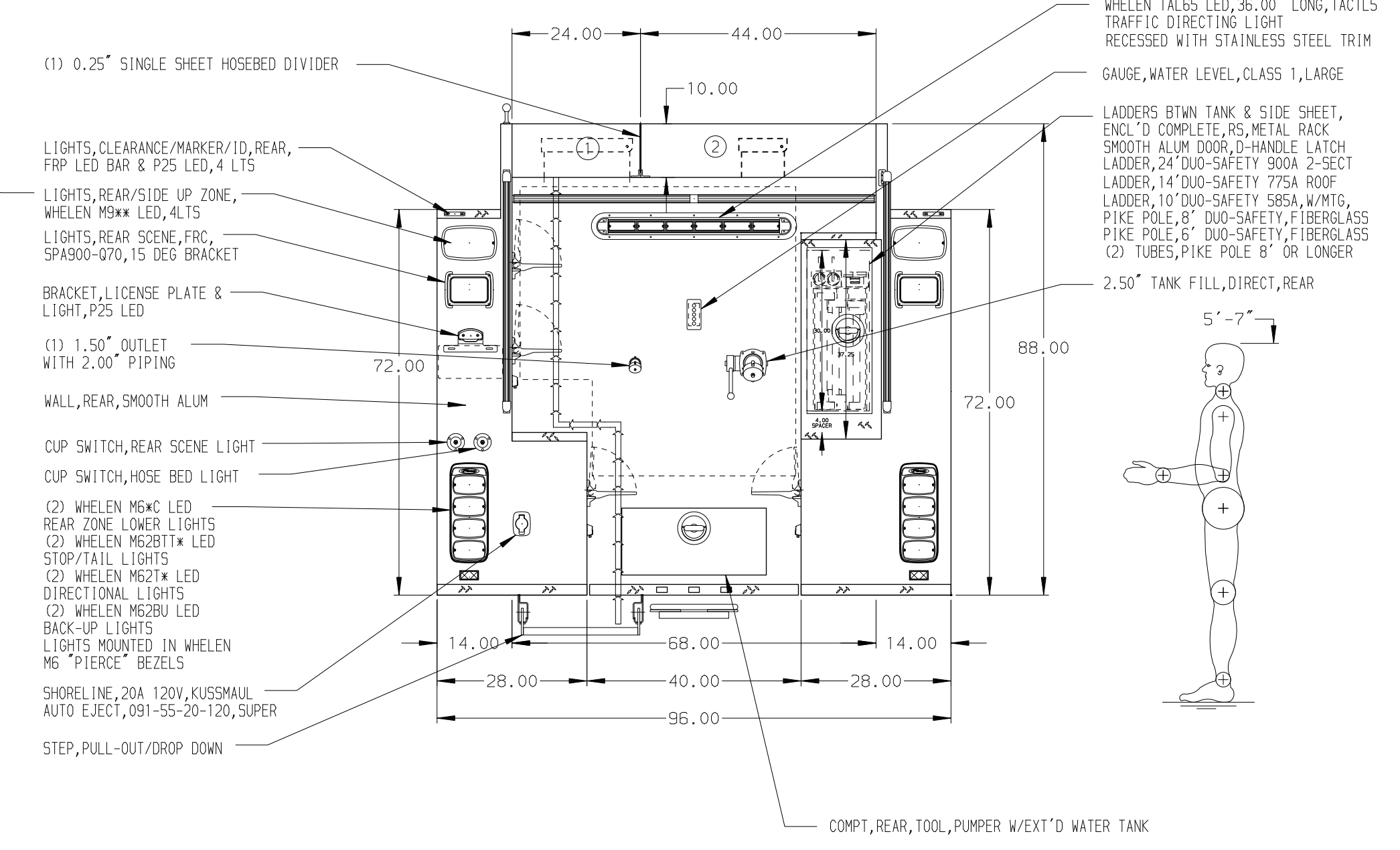
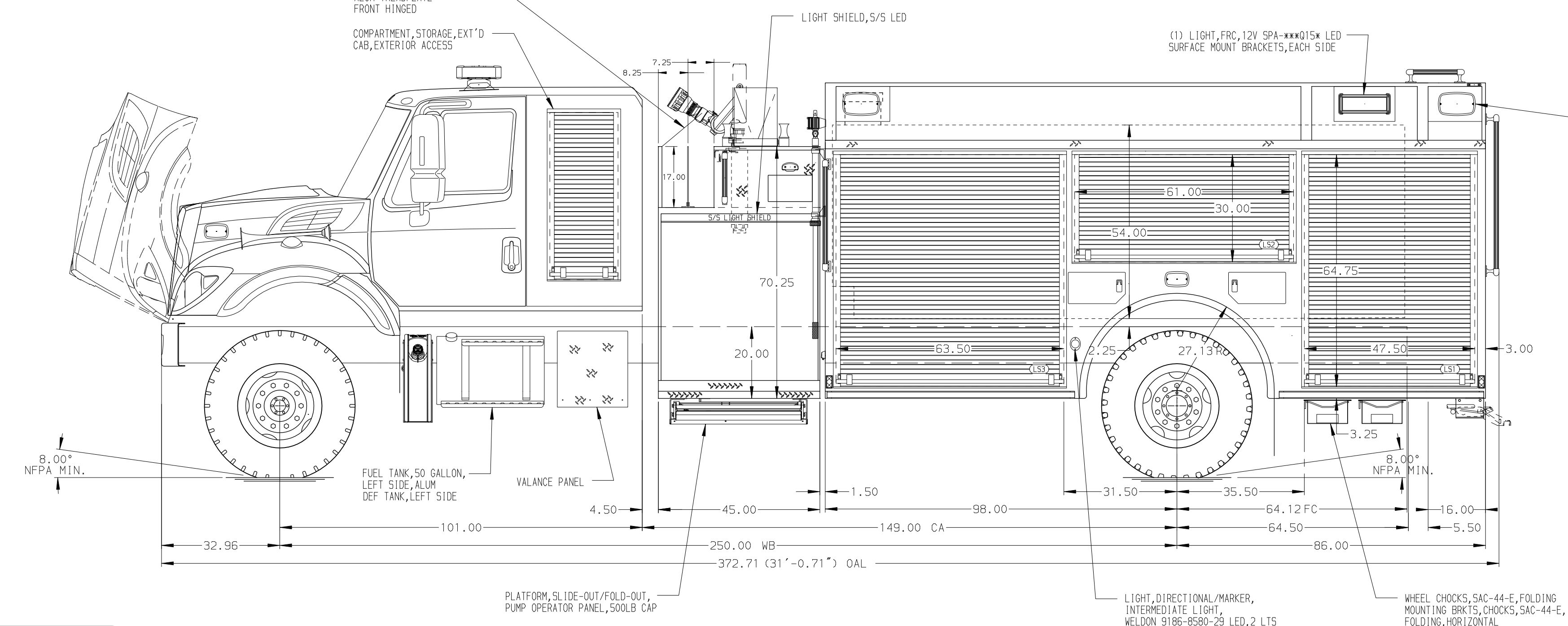


- HOSEBED CAPACITIES
- ① 500' OF 1.50" D.J. POLYESTER HOSE
 - ② 500' OF 2.50" D.J. POLYESTER HOSE



ALUMINUM BODY

NOTE
DIMENSIONS SHOWN ARE APPROXIMATE AND ARE SUBJECT TO MINOR DEVIATIONS AS MAY OCCUR OR BE NECESSARY IN CONSTRUCTION. MINOR DETAILS NOT SHOWN.

REV.	DATE	BY	CHK'D	CHASSIS DATA
09JUN23		RWR	NAS	CHASSIS
18MAY23		JLA	NAS	1HC
03FEB23		JLA	AJA	MODEL HV507 4X4

<p>MANUFACTURING INC. BRADENTON, FLORIDA</p>		JOB NO.	38285
		DATE	24JAN23
TITLE	1000-D-1475P, 25 FOAM, 184" BODY, LS&RS FULL HGT FDLR 45" SIDE CONTROL, (2) 1.5" CROSSLAYS	SCALE	1:24
FOR	WEST END FIRE AND RESCUE PAUL, IDAHO	DRAWN BY	JLA
DRWG. NO.	38285AD	CHK'D BY	AJA
		SHEET NO.	1 OF 1
		SHEET SIZE	D