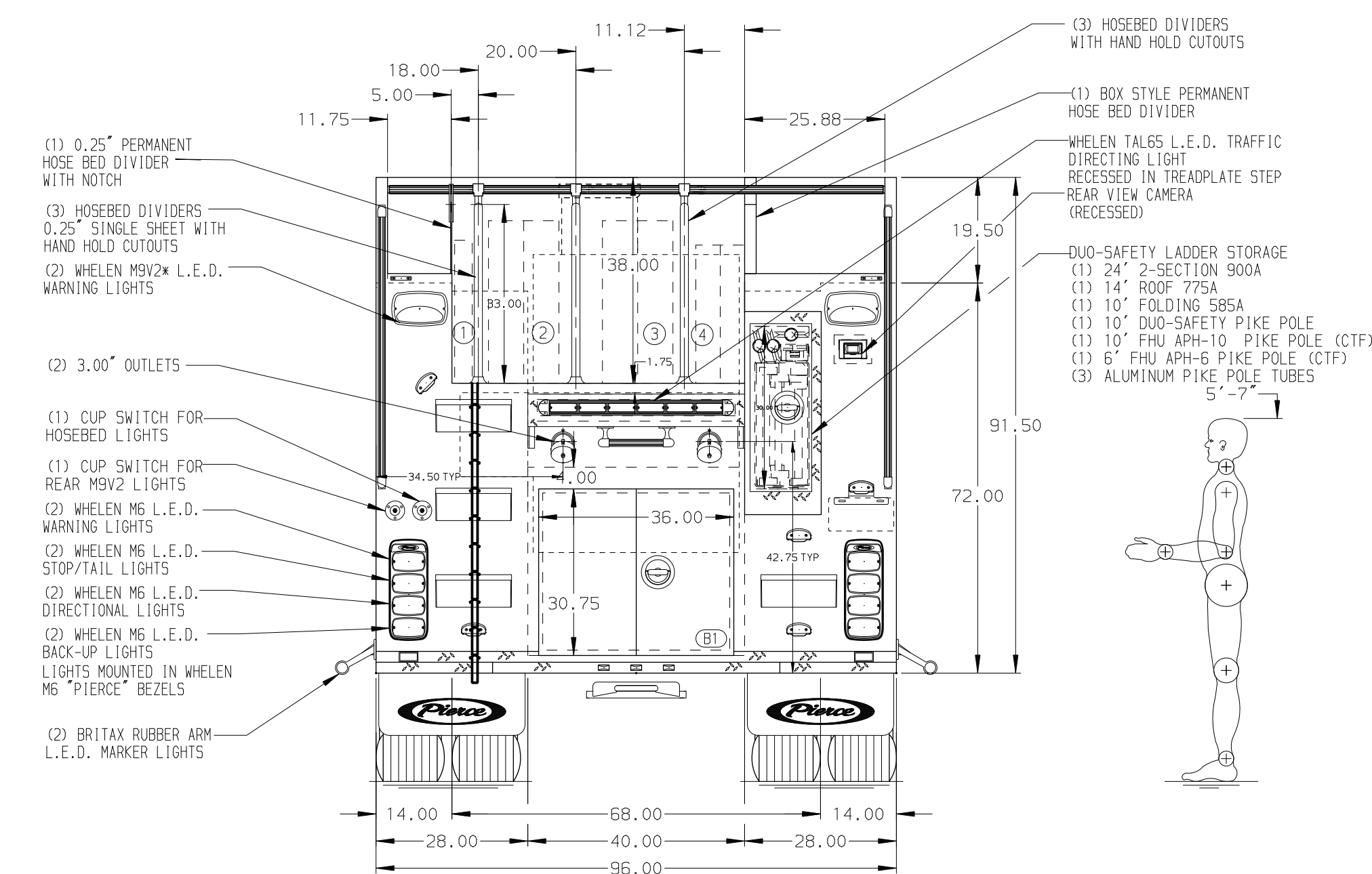
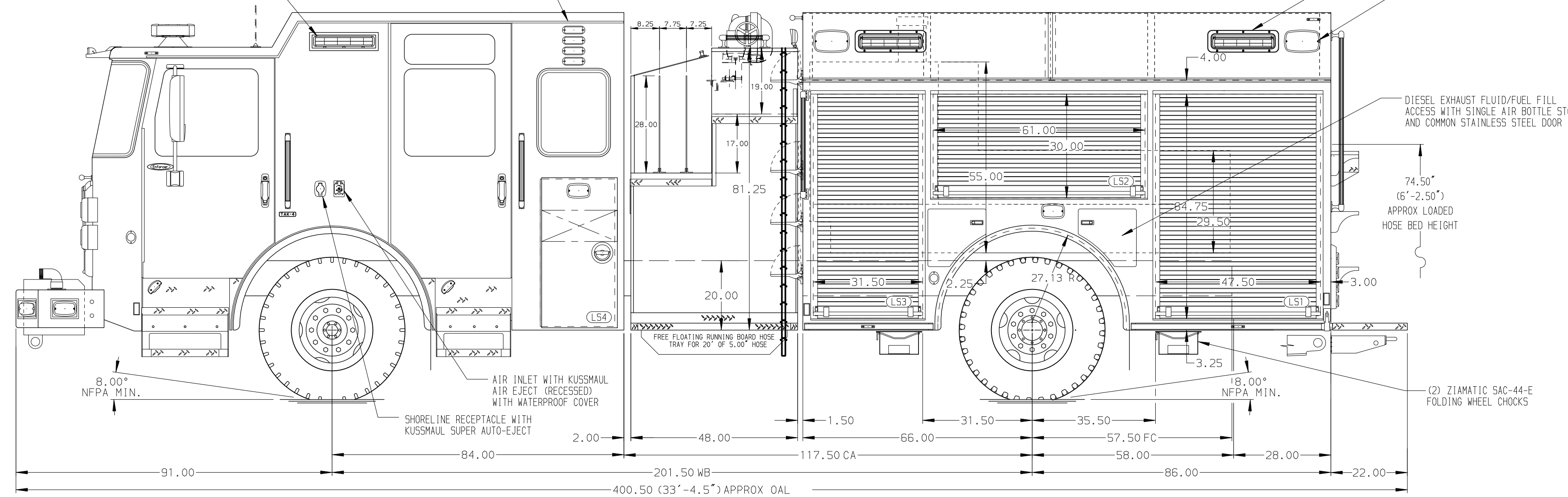


- HOSEBED CAPACITIES
- ① - 300' OF 1.75" D.J. HOSE
  - ② - 600' OF 4.00" L.D.H.
  - ③ - 600' OF 4.00" L.D.H.
  - ④ - 500' OF 2.50" D.J. HOSE



ALUMINUM BODY

NOTE  
DIMENSIONS SHOWN ARE APPROXIMATE AND ARE SUBJECT TO MINOR DEVIATIONS AS MAY OCCUR OR BE NECESSARY IN CONSTRUCTION. MINOR DETAILS NOT SHOWN.

1. BATTERY CHARGER LOCATED BEHIND THE DRIVER'S SEAT
2. BATTERY CHARGER INDICATOR LOCATED ON DRIVER'S SEAT RISER
3. BRIP PAN GUARD FOR ROLL-UP DOORS LOCATED PER ORDER
4. EIGHT FULL WIDTH/DEPTH ADJUSTABLE SHELVES LOCATED PER ORDER
5. FOUR ADJUSTABLE SLIDE-OUT TRAYS LOCATED PER ORDER
6. ONE FLOOR MOUNTED SLIDE-OUT TRAY LOCATED PER ORDER
7. ONE SWING-OUT TOOL BOARD WITH PEGBOARD PATTERN LOCATED PER ORDER
8. ONSPOT AUTOMATIC TIRE CHAINS

REV	DATE	BY	CH	ENFORCER
21DEC23	LST	JKR		CHASSIS DATA
09NOV23	LST	COS		MAKE
06NOV23	LST	COS		PIERCE
14SEP23	CDU	CDU		MODEL

		JOB NO.	38286
		SCALE	DATE
TITLE	1500-D-750P, 152" BODY, LS FDLER, RS FH/FD FRT & RR (3) CROSSLAYS, DELUGE, LADDERS BUILT INTO BODY	DRAWN BY	LME
FOR	ERIE FIRE DEPARTMENT ERIE, PENNSYLVANIA	CHECKED BY	CDU
DWG NO.	38286AD	SHEET SIZE	SHEET NO.
		D	1 OF 1