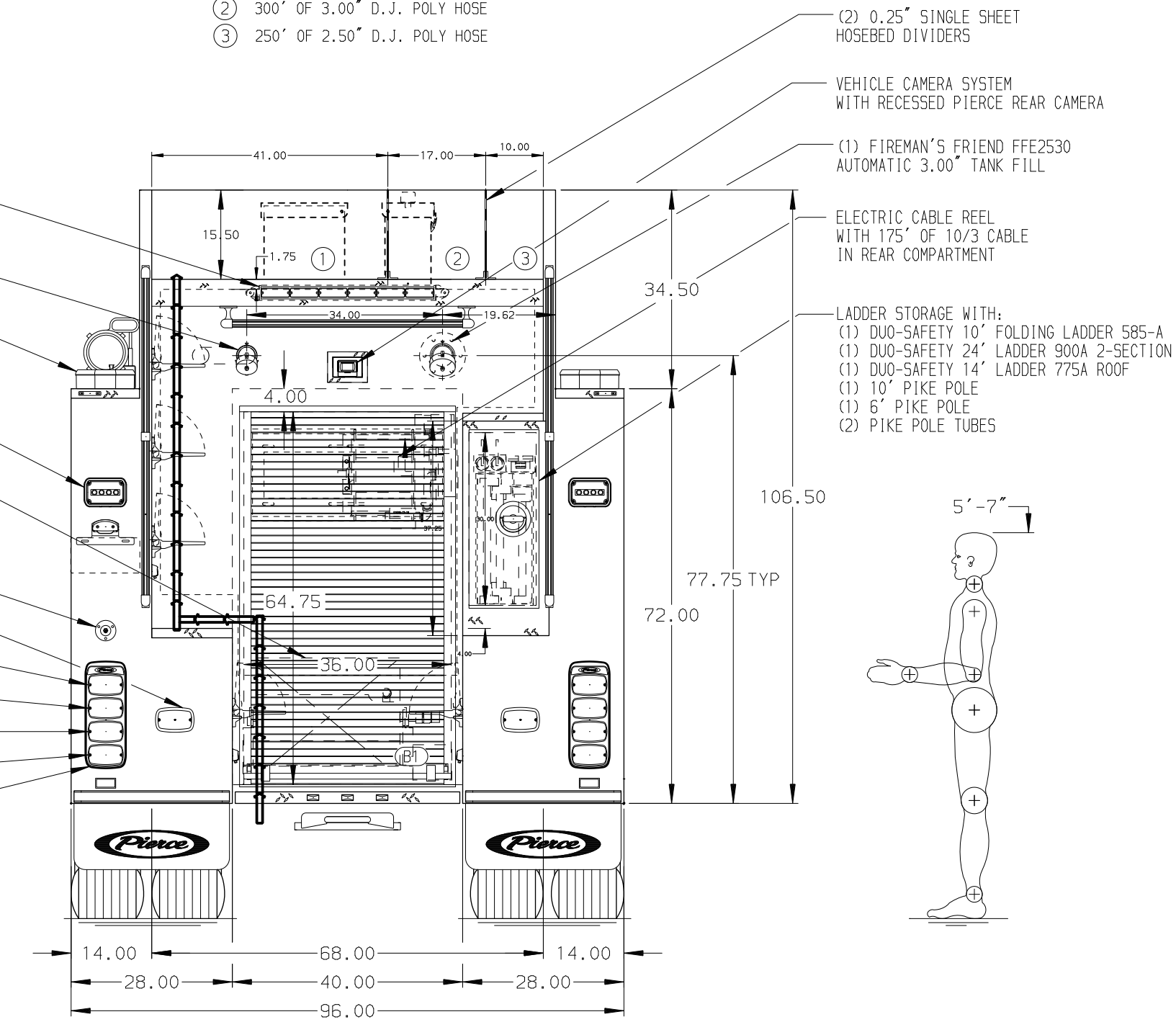


- HOSEBED CAPACITIES
- ① 800' OF 5.00" L.D. HOSE
 - ② 300' OF 3.00" D.J. POLY HOSE
 - ③ 250' OF 2.50" D.J. POLY HOSE

- WHELEN TALE5 L.E.D. TRAFFIC DIRECTING LIGHT MOUNTED IN 8" STEP
- (1) 2.50" OUTLET
- (1) HARD SUCTON HOSE TROUGH
- (2) CODE 3 DUOBEAM II DB2-2PZNFPA L.E.D. BEACON LIGHTS
- (2) HI-VIZ FT-6SMUR L.E.D. SCENE LIGHTS
- HOSE BOOSTER REEL WITH 200' OF 1" HOSE IN REAR COMPARTMENT (MODEL: EF34-23-24)
- CUP SWITCH FOR HOSE BED LIGHTS
- (2) WHELEN M6 L.E.D. WARNING LIGHTS
- (2) WHELEN M6 L.E.D. WARNING LIGHTS
- (2) WHELEN M6 L.E.D. STOP/TAIL LIGHTS
- (2) WHELEN M6 L.E.D. DIRECTIONAL LIGHTS
- (2) WHELEN M6 L.E.D. BACK-UP LIGHTS
- LIGHTS MOUNTED IN WHELEN M6 "PIERCE" BEZELS
- (2) ZIAMATIC SAC-44-E FOLDING WHEEL CHOCKS



ALUMINUM BODY

NOTE
DIMENSIONS SHOWN ARE APPROXIMATE AND ARE SUBJECT TO MINOR DEVIATIONS AS MAY OCCUR OR BE NECESSARY IN CONSTRUCTION. MINOR DETAILS NOT SHOWN.

CUSTOMER APPROVAL				
APPROVED BY:				
DATE:				
REV	DATE	BY	CH	SABER FR



TITLE	FOR	DWG NO.
1500-D-1500P, 1475G WATER, 25G FOAM, 161" FDLER PUMPER (3) SPEEDLAYS, RS BODY LADDER STORAGE, DELUGE	ATLANTA FIRE DEPARTMENT ATLANTA, GEORGIA USA	38293AD

JOB NO.	38293
SCALE	1:24
DATE	
DRAWN BY	ARI
CHECKED BY	EGO
SHEET SIZE	D
SHEET NO.	1 OF 1