

RIGHT SIDE COMPARTMENTS CONTAIN THE FOLLOWING:

COMPARTMENT R51 CONTAINS:

- (1) RACK FOR 32 SCBA BOTTLES
- (1) 4-DRAWER C-TECH CABINET
- (1) STD DEPTH ADJ SHELF

COMPARTMENT R52 CONTAINS:

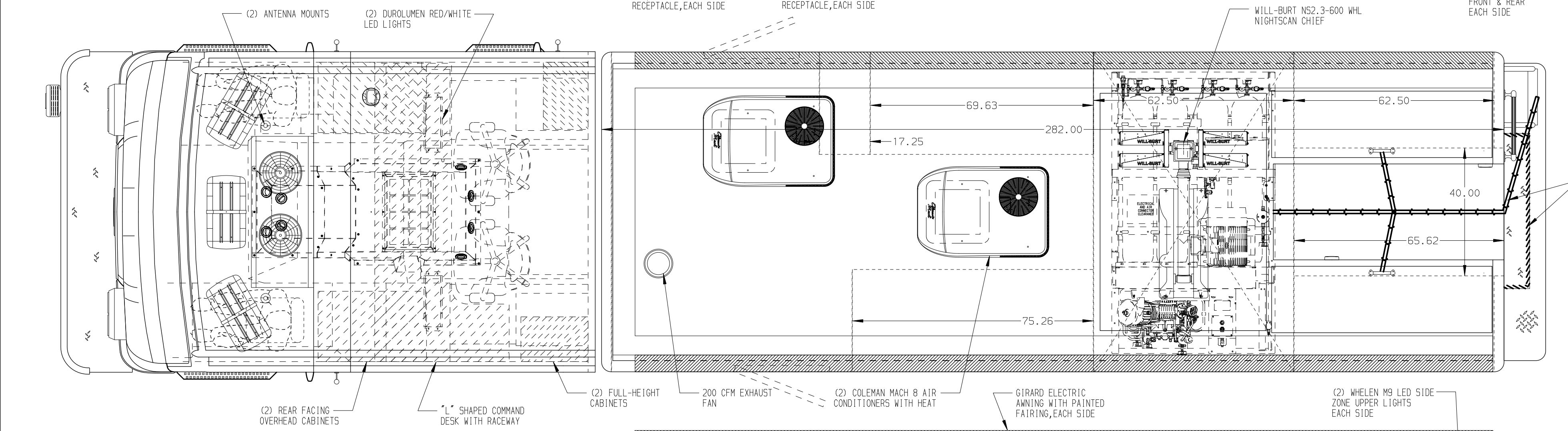
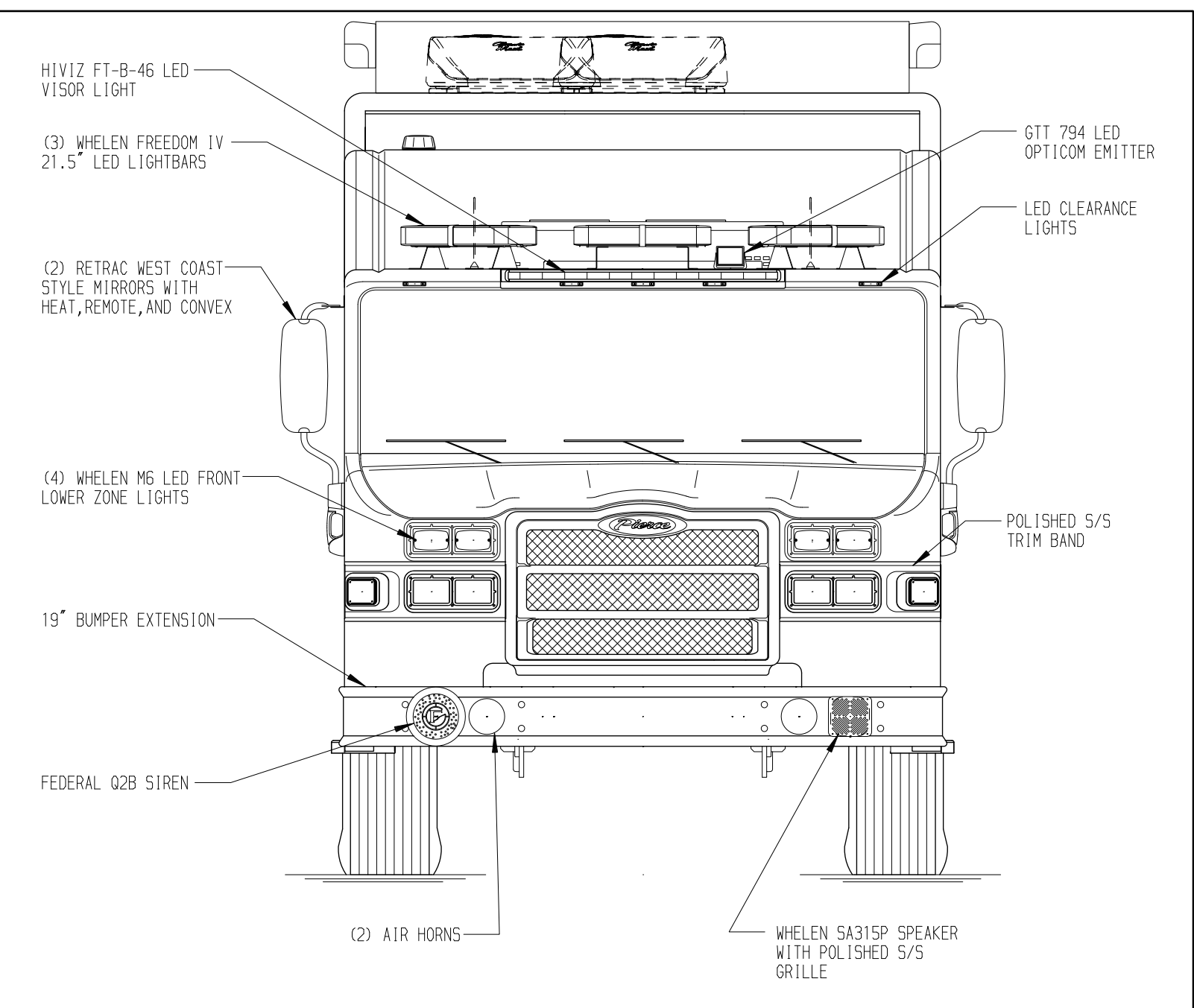
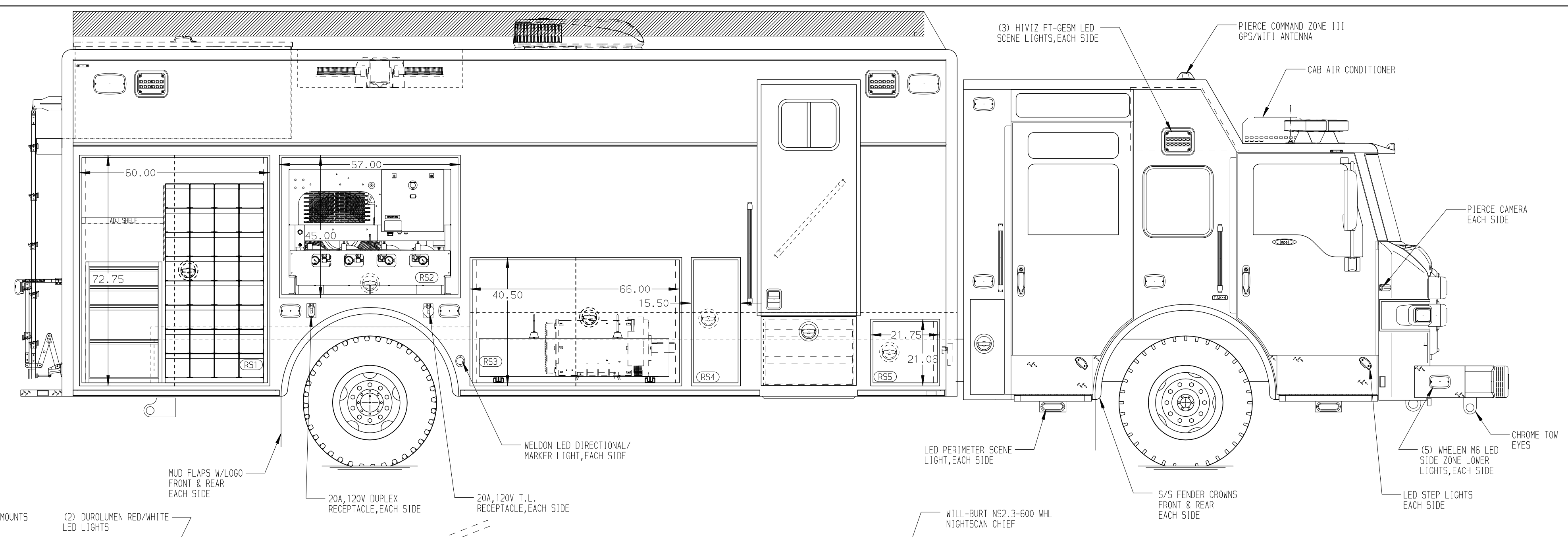
- (1) BAUER K12,14-10-E3 BREATHING COMPRESSOR W/4 ASME BOTTLES

COMPARTMENT R53 CONTAINS:

- (1) SLIDE OUT SINK ENCLOSURE WITH 2 FAUCETS

COMPARTMENT R54 CONTAINS:

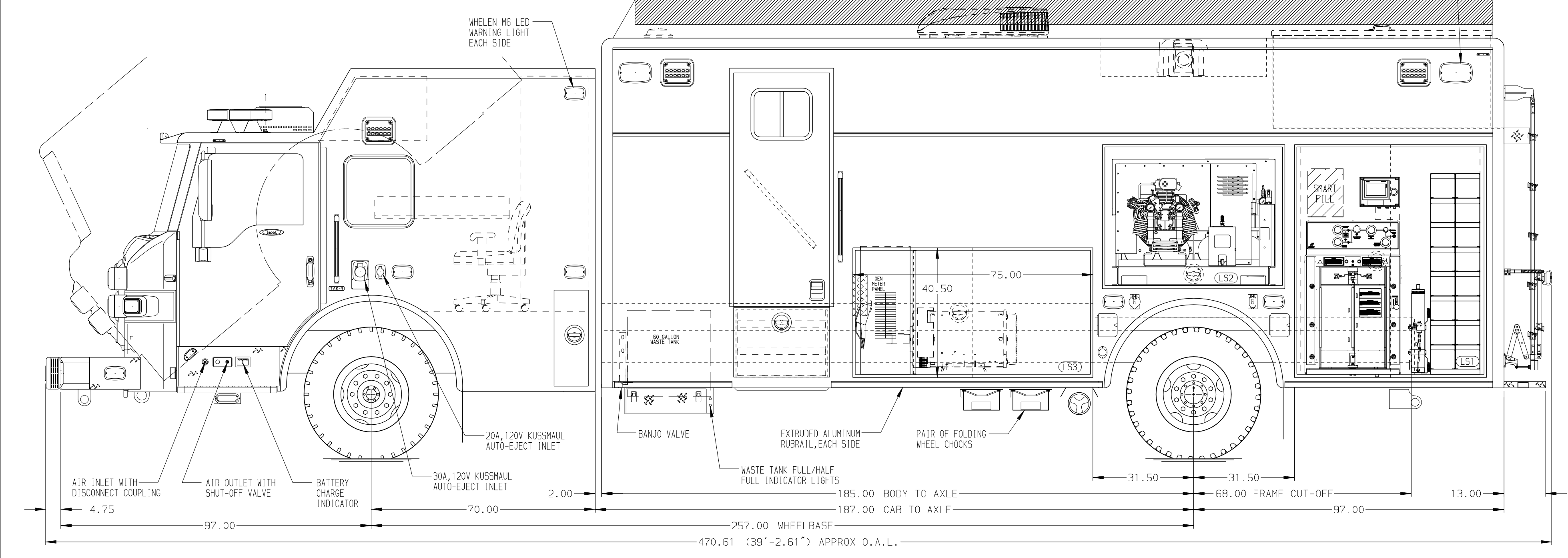
COMPARTMENT R55 CONTAINS:



REAR COMPARTMENT CONTAINS THE FOLLOWING:

COMPARTMENT B1 CONTAINS:

- (1) HORIZONTAL FLOOR EXTENSION
- (1) 60" DP FLOOR MTD SLIDE OUT TRAY
- (1) 60" DP ADJ SLIDE OUT TRAY



LEFT SIDE COMPARTMENTS CONTAIN THE FOLLOWING:

COMPARTMENT L51 CONTAINS:

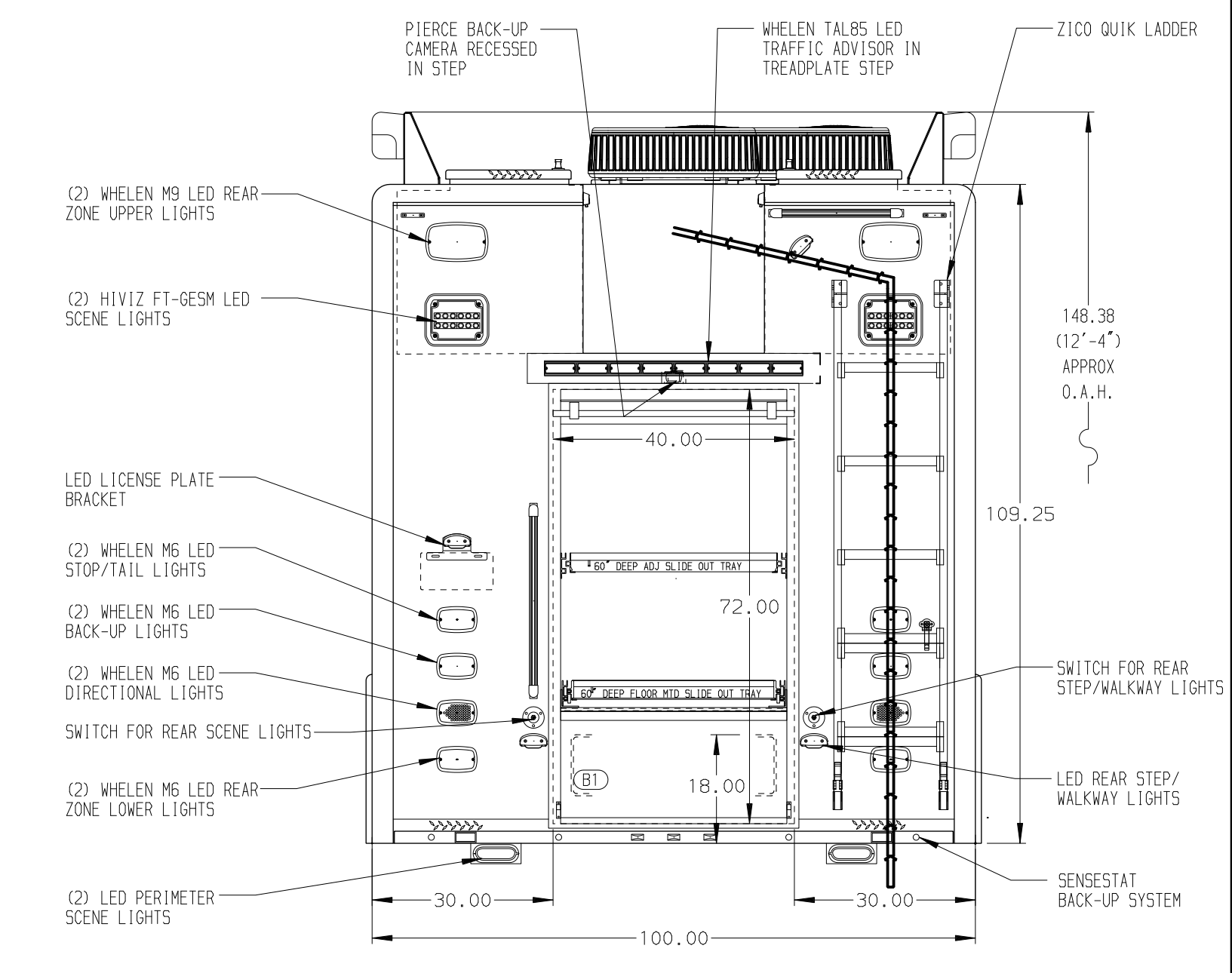
- (1) RACK FOR 16 SCBA BOTTLES
- (1) REVOLVE AIR 2-BOTTLE FILL ENCLOSURE
- (1) SMART FILL AIR CONTROL PANEL
- (1) AIR COMPRESSOR CONTROLLER
- BREATHING AIR PURIFIERS

COMPARTMENT L52 CONTAINS:

- (1) BAUER K12,14-10-E3 BREATHING COMPRESSOR W/4 ASME BOTTLES

COMPARTMENT L53 CONTAINS:

- (1) CIRCUIT BREAKER PANEL
- (1) GENERATOR METER PANEL
- (1) SUB FEED BOX
- (1) NIGHTSCAN CONTROLLER
- (1) VERTICAL COMPARTMENT DIVIDER



NOTE: DIMENSIONS SHOWN ARE APPROXIMATE AND ARE SUBJECT TO MINOR DEVIATIONS AS MAY OCCUR OR BE NECESSARY IN CONSTRUCTION. MINOR DETAILS NOT SHOWN.

- NOTES:
- MAGNAPLUS BOWW THREE PHASE PTO DRIVEN GENERATOR WITH SPLASH GUARD LOCATED BETWEEN THE FRAME RAILS
  - POLISHED 5/5 SCUFFPLATES ON CAB AND COMMAND CAB DOOR JAMBS
  - FLOOR IN CAB AND CREW CAB TO BE PADDED RUBBER
  - KUSSMAUL 1200 CHARGER LOCATED BEHIND THE DRIVER'S SEAT
  - PIERCE LED LIGHTS IN ALL BODY AND MACH COMPARTMENTS
  - (2) 15A,120V G-PLACE RECEPTACLES ABOVE THE DESK IN THE COMMAND CAB

NOTE: LAP DOORS HAVE BEEN SHOWN IN HIDDEN LINES TO CLEARLY IDENTIFY THE EQUIPMENT IN EACH COMPARTMENT. DASHED LINES ON SIDES ARE DOORS IN OPEN POSITION

**CLEAR DOOR WIDTH KEY**

AMOR ROLL UP DOORS:	-2 1/4"
CORTITE ROLL UP DOORS:	-2 1/2"
PIERCE DOUBLE LAP DOORS:	-4 1/4"
PIERCE LIFT-UP LAP DOORS:	-3 1/2"

(EX: 60" F-F - 2 1/4" = 57 3/4" CLEAR)  
(F-F) = FRAME TO FRAME

REV	DATE	BY	CH	CHASSIS DATA	MAKE	MODEL
	06NOV23	DHE	AZU	PIERCE		
	30AUG23	DHE	AZU	PIERCE		
	22MAY23	DHE	AZU	PIERCE		

		JOB NO.	38324
		SCALE	1:24
<b>TITLE</b> HEAVY DUTY RESCUE WALKIN/NON-WALKIN COMBO <b>FOR</b> SEMINOLE COUNTY BID #746 ROBERT BOGGUS		DATE	
		DRAWN BY	DHE
<b>DWG NO.</b> 38324AD-SH1		CHECKED BY	AZU
		DATE	06MAR23
SHEET NO. 1 OF 1		SHEET SIZE	
		DATE	07MAR23