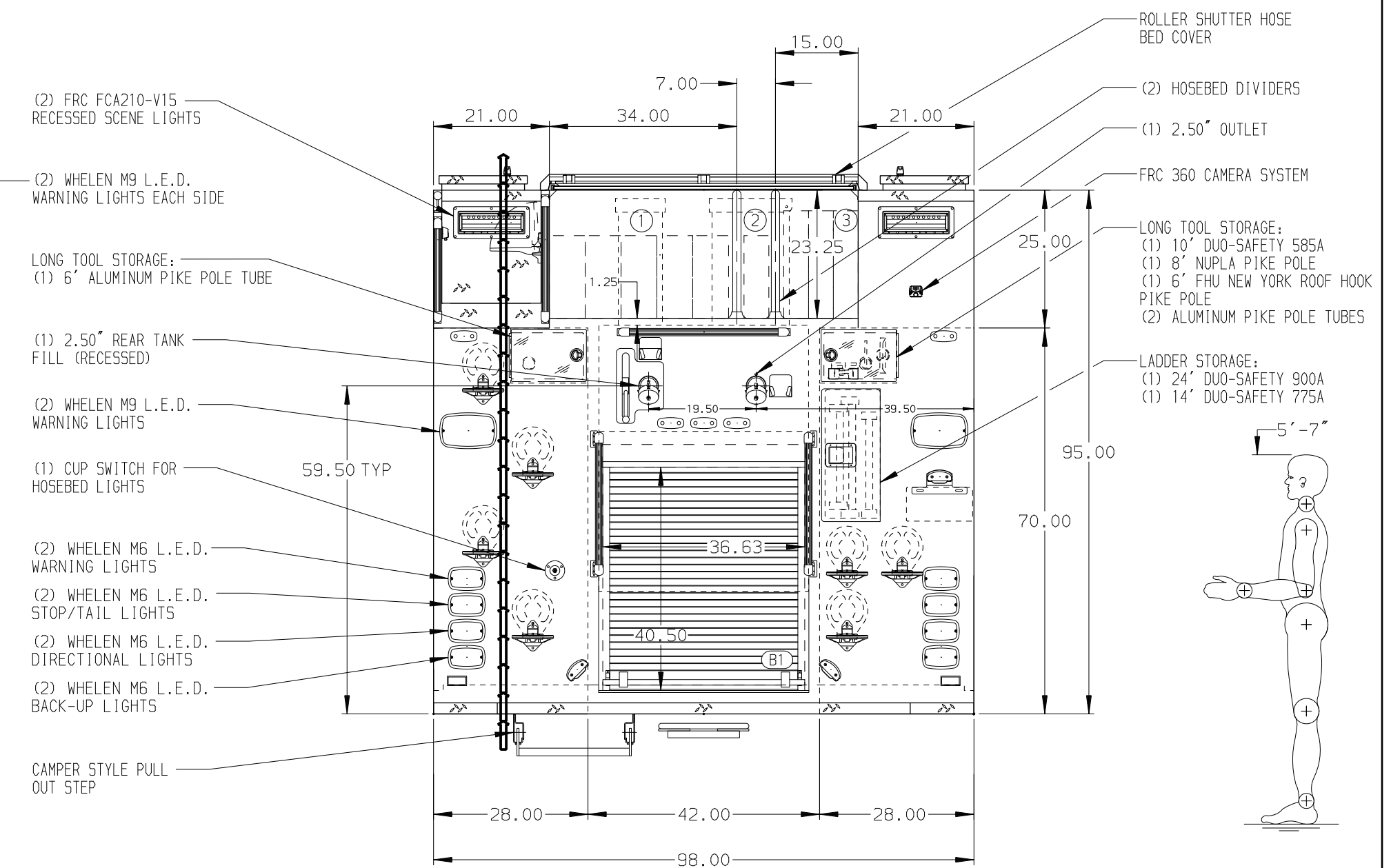


- HOSEBED CAPACITIES
- ① 1000' OF 4.00\"/>



ALUMINUM BODY

FRONTAL IMPACT PROTECTION

NOTE
DIMENSIONS SHOWN ARE APPROXIMATE AND ARE SUBJECT TO MINOR DEVIATIONS AS MAY OCCUR OR BE NECESSARY IN CONSTRUCTION. MINOR DETAILS NOT SHOWN.

- 1. AIR OUTLET WITH SHUT-OFF VALVE LOCATED IN D5 STEP WELL
- 2. DUAL L.E.D. LIGHT STRIPS LOCATED IN HOSE BED
- 3. S/STL SCUFFPLATE AROUND FUEL FILL OPENING
- 4. STAINLESS STEEL SCUFFPLATE ON BODY REAR CORNERS
- 5. ALL FOLDING STEPS TO BE TRIDENT WITH INTEGRATED L.E.D. LIGHT UNLESS SPECIFIED
- 6. AIR INLET WITH DISCONNECT COUPLING LOCATED IN D5 STEP WELL

REV	DATE	BY	CH	ENFORCER
08MAR24	ARI	NPE		
18JAN24	ARI	NPE		
16NOV23	ARI	NPE		

		JOB NO.	38355
		SCALE	DATE
TITLE	1500-D-1030P, 1000G WATER W/30G FOAM, 177\"/>	DRAWN BY	ARI
FOR	THE DANIEL R. SAYRE MEMORIAL FOUNDATION HILO, HAWAII	CHECKED BY	NPE
DWG NO.	38355AD-SH1	SHEET SIZE	SHEET NO.
		D	1 OF 1