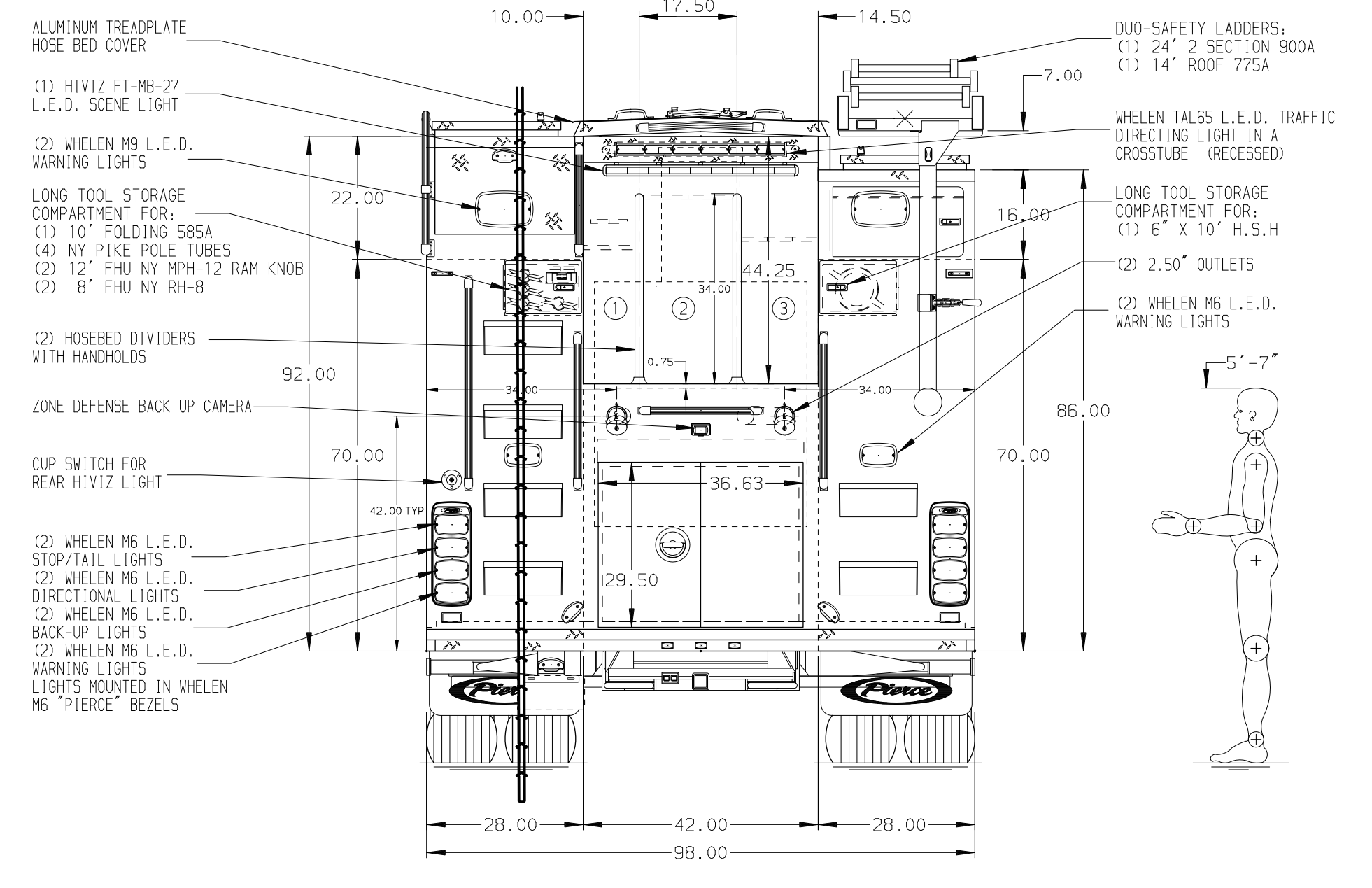
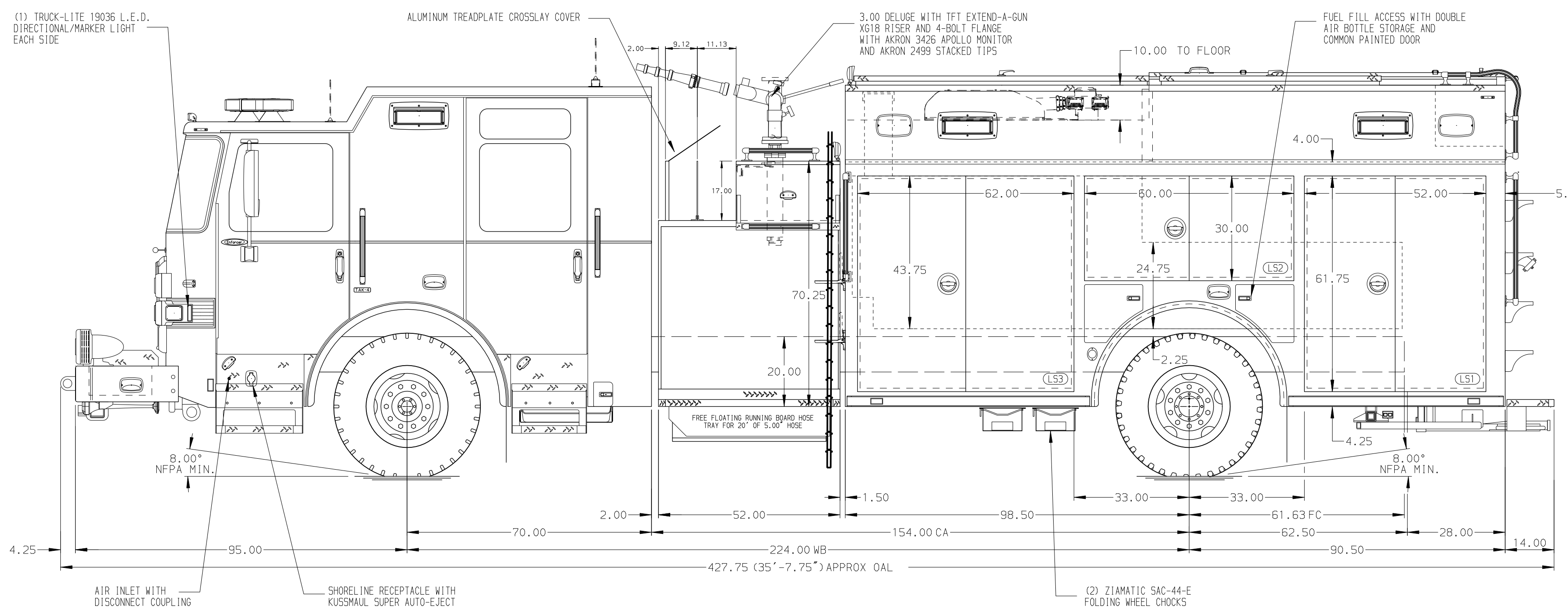


HOSEBED CAPACITIES

① - 500' OF 2.50" D.J. POLY HOSE (BELOW) AND 100' OF 1.75" D.J. POLY HOSE (ABOVE)

② - 700' OF 5.00" D.J. POLY HOSE

③ - 800' OF 2.50" D.J. POLY HOSE



STAINLESS STEEL BODY

SIDE ROLL AND FRONTAL IMPACT PROTECTION

		JOB NO.	38359
		SCALE	DATE
TITLE 1500-D-750P, 750 GALLON WATER TANK, 189" HDRP BPDY RS LADDER RACK, (2) CROSSLAYS, DELUGE, LIGHT TOWER FOR MORRIS FIRE AMBULANCE PROTECTION DISTRICT MORRIS, ILLINOIS	DRAWN BY	JJB	11AUG23
	CHECKED BY	EGO	11AUG23
	SHEET SIZE	D	SHEET NO.
DWG NO.	38359AD-SH1		

NOTE  
DIMENSIONS SHOWN ARE APPROXIMATE AND ARE SUBJECT TO MINOR DEVIATIONS AS MAY OCCUR OR BE NECESSARY IN CONSTRUCTION. MINOR DETAILS NOT SHOWN.

1. PACCAR DEF TANK MOUNTED UNDER CAB ON THE DRIVER'S SIDE
2. BATTERY CHARGER/AIR COMPRESSOR PER SHOP ORDER
3. BATTERY CHARGER INDICATOR LOCATED PER SHOP ORDER
4. 120V DUPLEX RECEPTACLE LOCATED IN CAB PER SHOP ORDER
5. FOUR 6" FHU NEW YORK ROOF HOOKS RH-6 LOCATED ON BACK OF CAB MOUNTED AT FINAL

REV	DATE	BY	CH	ENFORCER
19DEC23	JJB	CLM		MAKE
02NOV23	JJB	CLM		PIERCE
18AUG23	JJB	EGO		MODEL