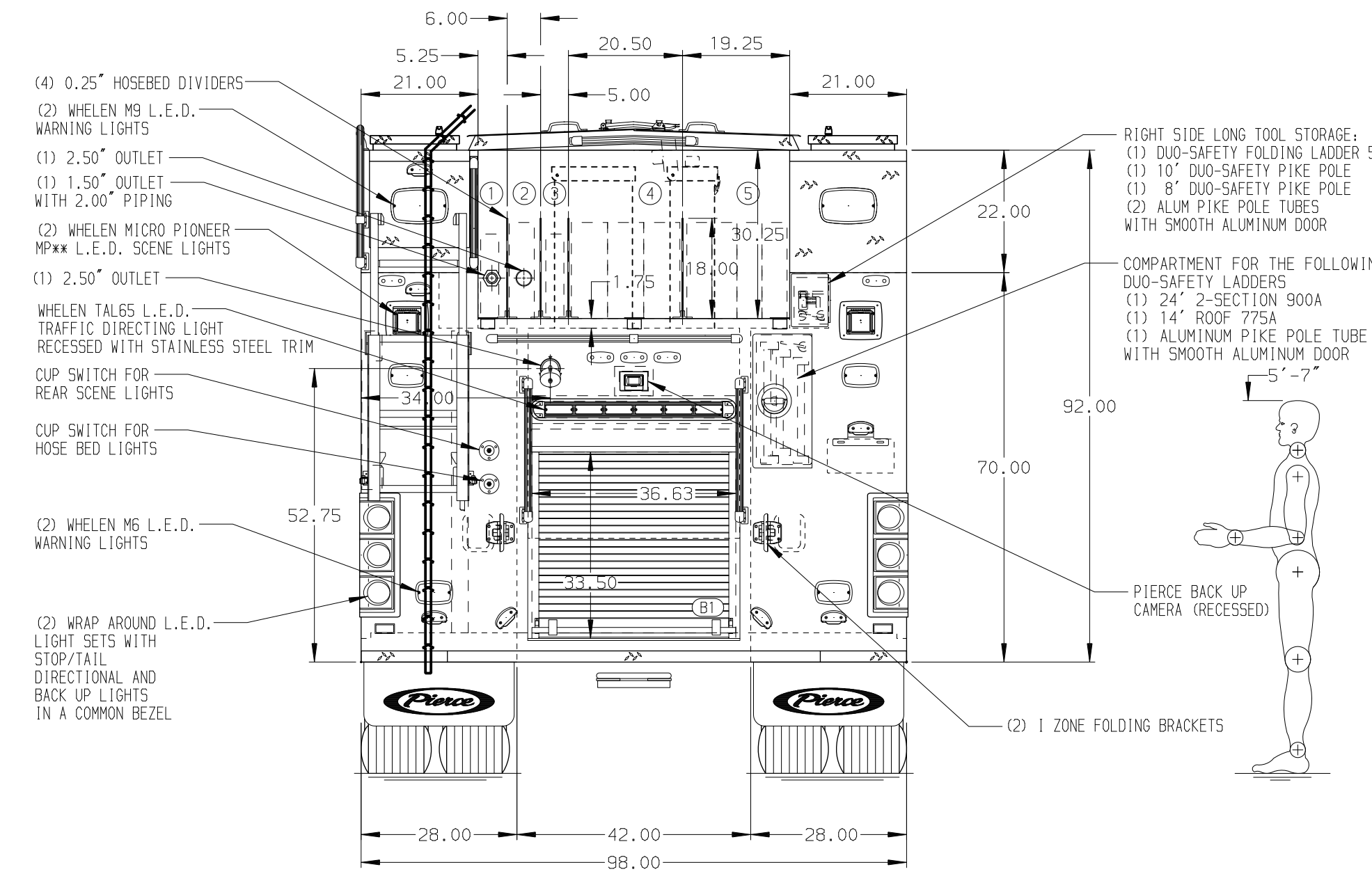


HOSEBED CAPACITIES

- 200' OF 1.75" DJP HOSE
- 200' OF 2.50" DJP HOSE
- 200' OF 1.75" DJP HOSE
- 600' OF 4.00" DJP HOSE
- 800' OF 2.50" DJP HOSE



ALUMINUM BODY

NOTE
 DIMENSIONS SHOWN ARE APPROXIMATE AND ARE SUBJECT TO MINOR DEVIATIONS AS MAY OCCUR OR BE NECESSARY IN CONSTRUCTION. MINOR DETAILS NOT SHOWN.

- WORDEN HWG-SB SUPER GRIPPER WHEEL CHOCKS PROVIDED BY PIERCE WITH MOUNTING BRACKETS PROVIDED BY FIRE DEPARTMENT
- BATTERY CHARGER LOCATED BEHIND DRIVER'S SEAT
- BATTERY CHARGER INDICATOR BEHIND DRIVER'S SEAT DISPLAYED THROUGH WINDOW
- DUAL L.E.D. LIGHT STRIPS LOCATED IN HOSE BED
- L.E.D. LIGHTS IN CROSSLAY COMPARTMENT PER ORDER

CUSTOMER APPROVAL				Pierce MANUFACTURING INC.		JOB NO.	38371
APPROVED BY:				SCALE	1:24	DATE	
DATE:				DRAWN BY	SAM		09MAY22
				CHECKED BY	WKL		10MAY22
				SHEET SIZE	D	SHEET NO.	1 OF 2
CHASSIS DATA	TITLE	1500-D-520P,500G WATER/20G FOAM,177" RESCUE BODY PUC		FOR	FOUNTAIN VALLEY FIRE DEPARTMENT FOUNTAIN VALLEY, CALIFORNIA		
PIERCE	MODEL		DWG NO.		38371AD-SH1		
REV	DATE	BY	CH	ARROW	XT		