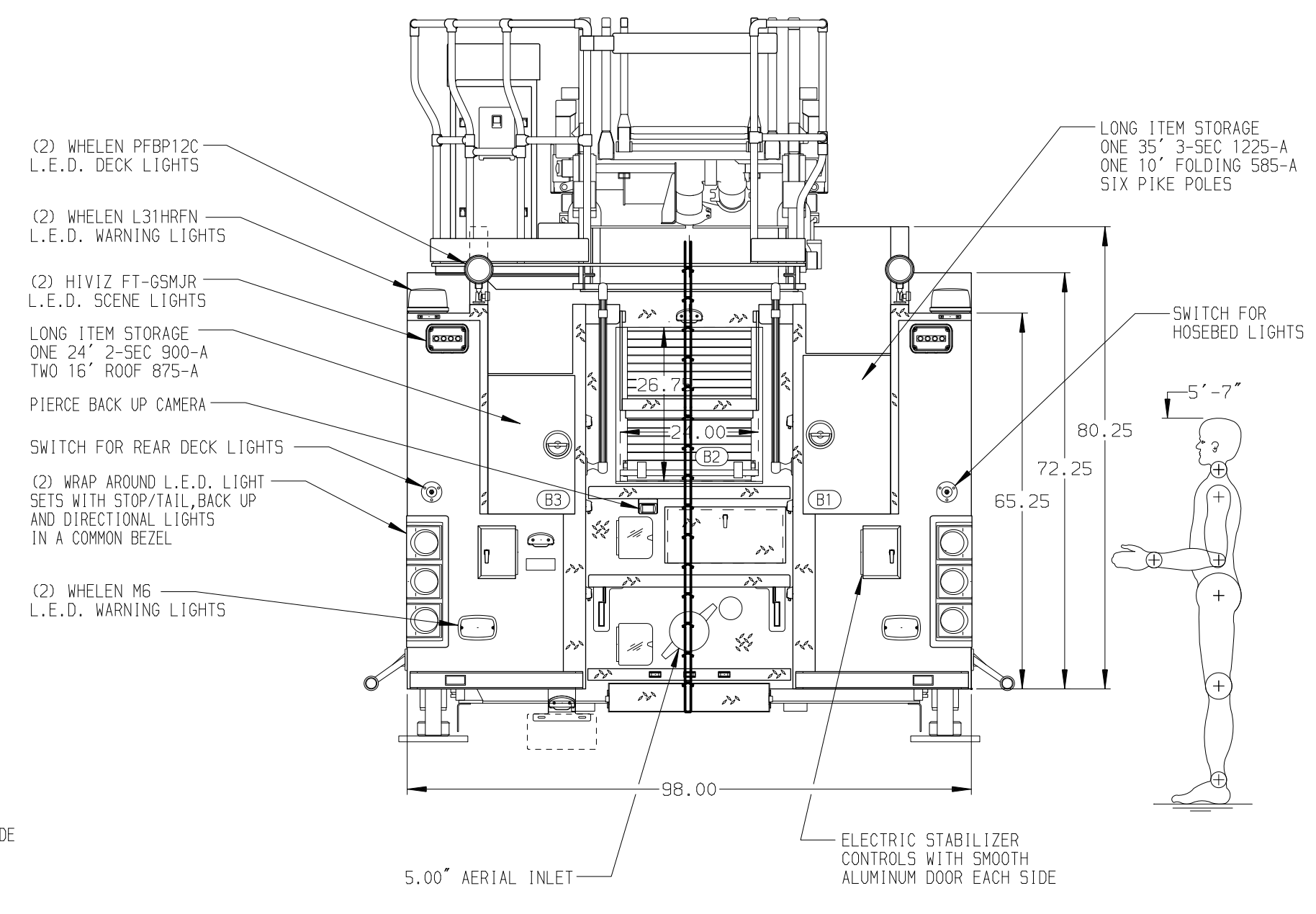
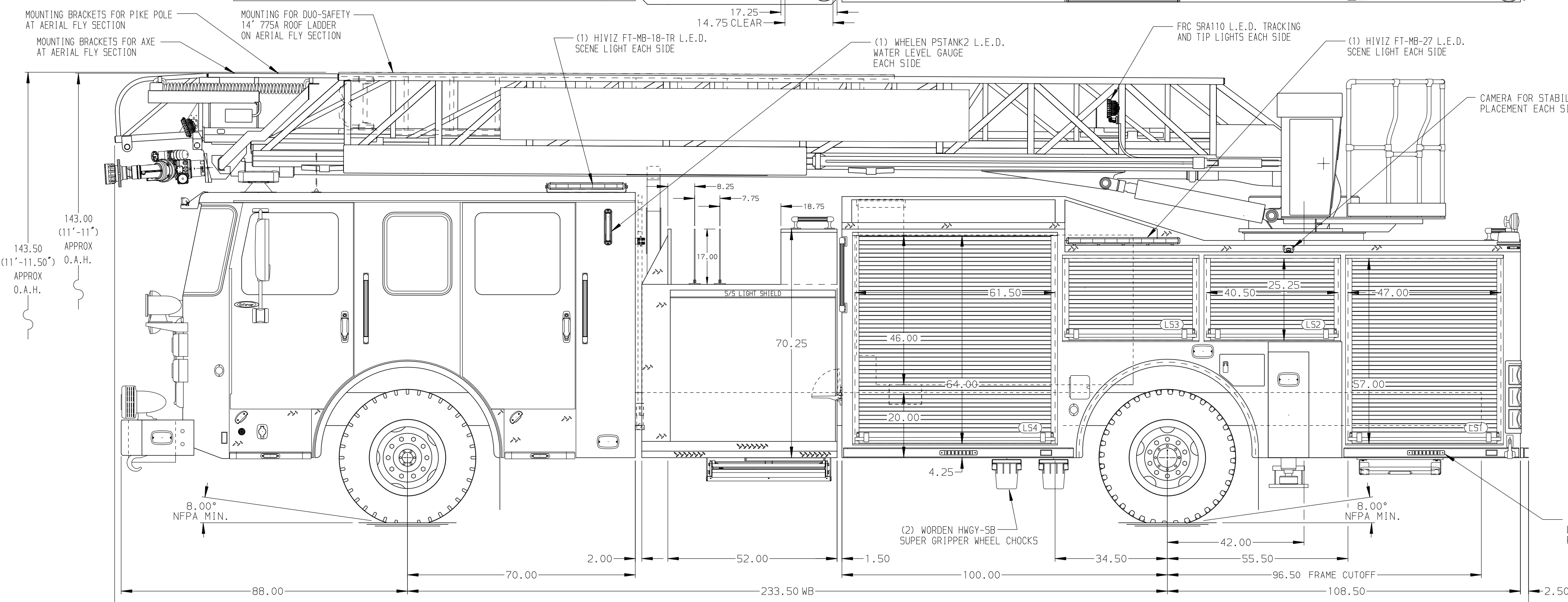


BODY	WATER TANK
75' HAL Aluminum Body	500 Gallon Poly Water Tank
COMPT, LEFT SIDE FRONT	Foam System
Full Height RollUp Forward	Foam System Not Required
COMPT, LEFT SIDE REAR	Foam Cell
Full Height RollUp Rearward	Foam Cell Not Required
COMPT, RIGHT SIDE FRONT	
Full Height RollUp Forward	
COMPT, RIGHT SIDE REAR	
Full Height RollUp Rearward	



CHASSIS Enforcer Chassis 450 HP Cummins L9 Engine	CAB 7000 Enforcer Cab 19" Extended Painted Steel	AXLE, FRONT, CUSTOM 20,000 Lb Dana Axle AXLE, REAR 33,500 Lb Meritor Axle	TRANSMISSION Allison 6th Gen, 3000 EV5 P	PUMPHOUSE 52" Control Zone Side Mount PUMP 2000 GPM Waterous CSU	CROSSLAYS, 1.50" (2) 1.50" Standard Capacity DEADLAYS, 2.50" (1) 2.50" 400' Capacity	SPEEDLAYS Speedlays Not Required GENERATOR Generator Not Required	-	-
--	---	--	--	--	---	--	---	---

NOTE
DIMENSIONS SHOWN ARE APPROXIMATE AND ARE SUBJECT TO MINOR DEVIATIONS AS MAY OCCUR OR BE NECESSARY IN CONSTRUCTION. MINOR DETAILS NOT SHOWN.

- ONE 1.50" OUTLET WITH 2.00" PIPING AND SWIVEL LOCATED ON RIGHT SIDE BUMPER DECK
- SHORELINE RECEPTACLE WITH KUSSMAUL SUPER AUTO-EJECT LOCATED ON DRIVER SIDE STEP WELL
- AIR INLET WITH AIR EJECT IN THE DRIVER SIDE STEPWELL
- BATTERY CHARGER LOCATED IN COMPARTMENT PER SHOP ORDER
- BATTERY CHARGE INDICATOR LOCATED ON THE DRIVER SIDE SEAT RISER
- DUAL L.E.D. LIGHT STRIPS LOCATED IN HOSE BED
- FOUR ADJUSTABLE SHELVES IN COMPARTMENTS PER SHOP ORDER
- FOUR FLOOR MOUNTED SLIDE-OUT TRAYS IN COMPARTMENTS PER SHOP ORDER
- PEGBOARD ON BACK WALL OF EIGHT COMPARTMENTS PER SHOP ORDER
- ONE 120V 6-PLACE RECEPTACLE STRIP IN CAB PER SHOP ORDER
- 1.50" RAISED AERIAL PEDESTAL
- 1500 GPM HIGH FLOW WATERWAY
- RUNG LIGHTING ON AERIAL LADDER
- 2-WAY INTERCOM SYSTEM BETWEEN AERIAL TIP AND TURNABLE
- NO LIMITED RETRACTION
- FOUR 120V RECEPTACLES PER ORDER

		JOB NO.	38393
		SCALE	DATE
TITLE	75 AERIAL LADDER & BODY ASSEMBLY	DRAWN BY	LWE
FOR	MOTTVILLE FIRE COMPANY INC. MOTTVILLE, NY	CHECKED BY	NDA
DWG NO.	38393AD	SHEET SIZE	SHEET NO.
REV	DATE	BY	CH