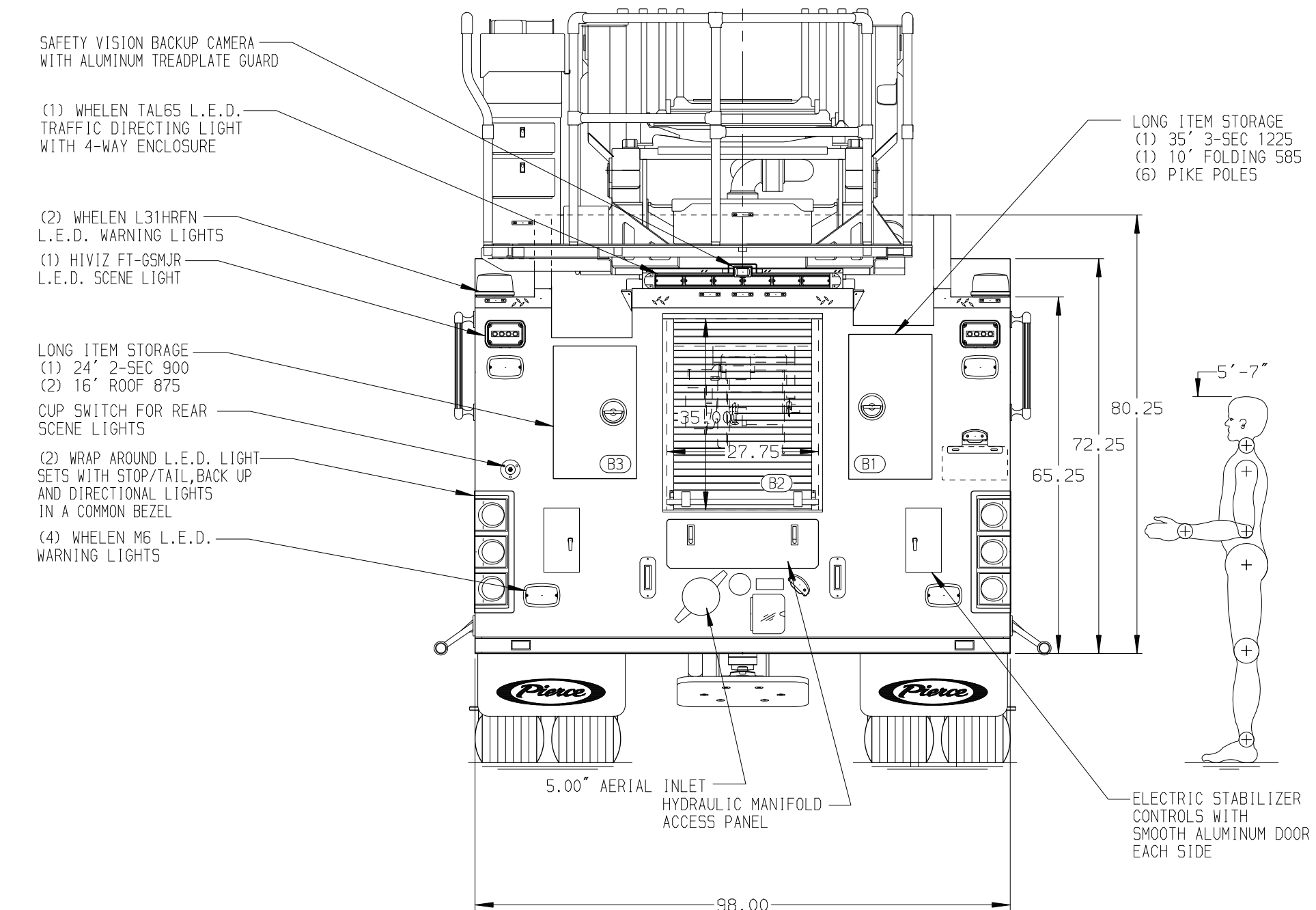
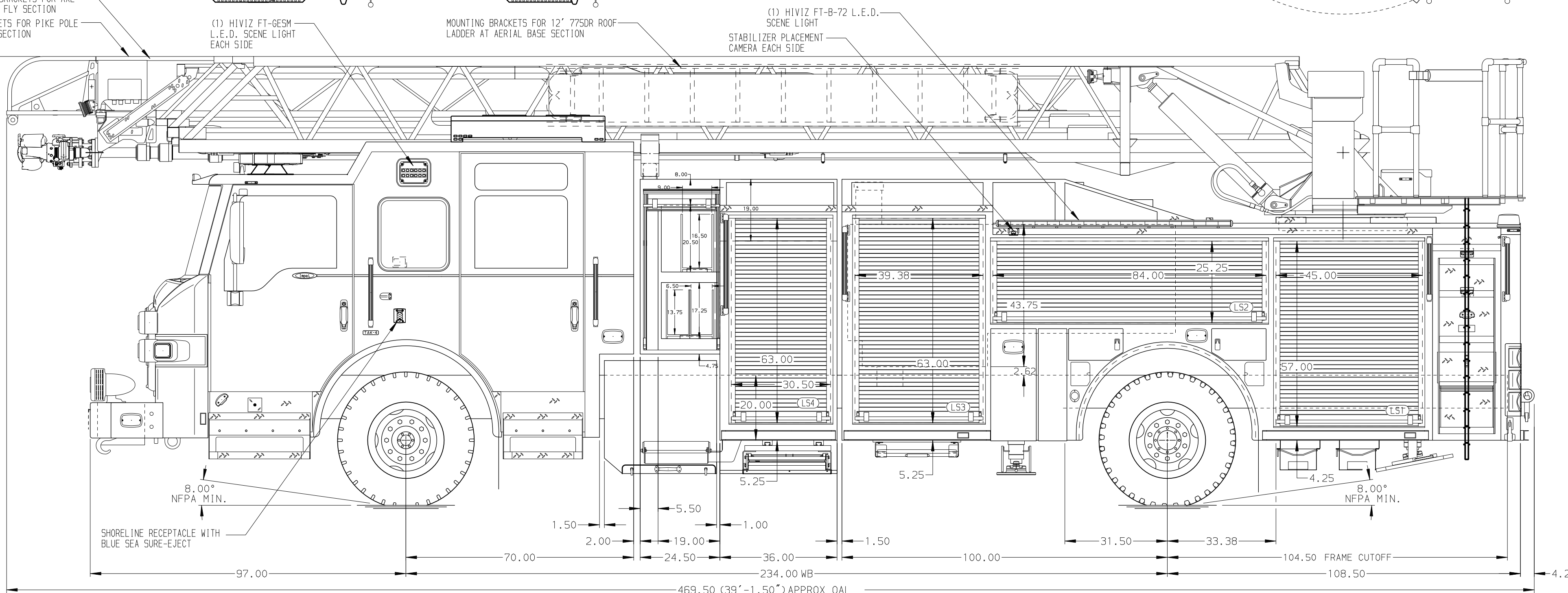
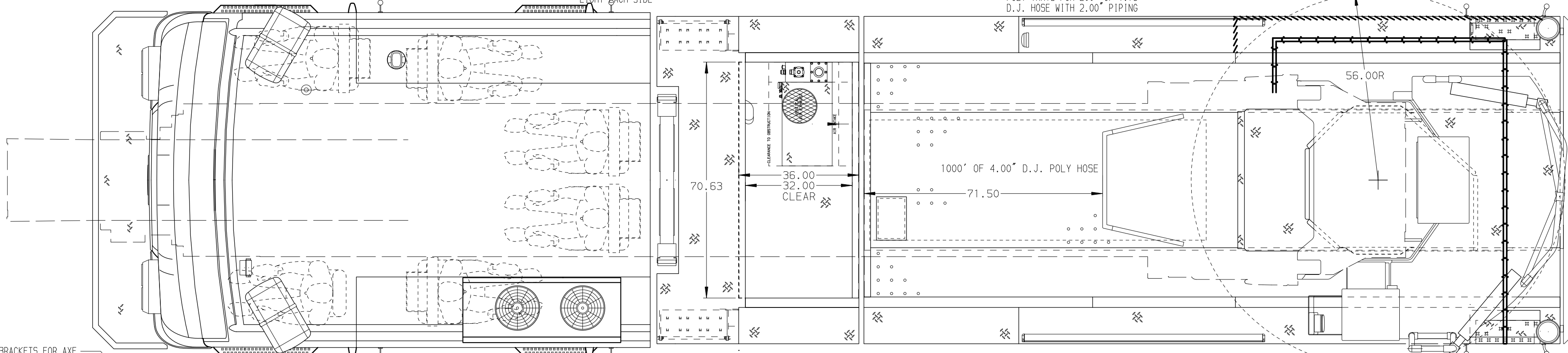


BODY	WATER TANK
107' ASL Aluminum Body PUC	500 Gallon Poly Water Tank
COMPT, LEFT SIDE FRONT	Foam System
Full Height RollUp Forward	Foam System Not Required
COMPT, LEFT SIDE REAR	Foam Cell
Full Height RollUp Rearward	Foam Cell Not Required
COMPT, RIGHT SIDE FRONT	
Full Height RollUp Forward	
COMPT, RIGHT SIDE REAR	
Full Height RollUp Rearward	



CHASSIS Impel Chassis, PUC	CAB 7010 Notched Impel FR Cab, PUC	AXLE, FRONT, CUSTOM 24,000 Lb TAK-4 Axle	TRANSMISSION Allison 6th Gen, 3000 EV5 P	PUMPHOUSE Control Zone, PAL/PAP PUC	CROSSLAYS, 1.50" (2) 1.50", Poly Trays, 200'	SPEEDLAYS Not Required	SAFETY Side Roll and Frontal Impact Protection
ENGINE 450 HP Cummins L9 Engine	BUMPER 19" Extended Painted Steel	AXLE, REAR 33,500 Lb Meritor Axle		PUMP 1500 GPM Pierce PUC	CROSSLAYS, 2.50" (1) 2.50", Poly Tray, 200'	GENERATOR Harrison 6KW Stinger MSV Hyd.	

NOTE DIMENSIONS SHOWN ARE APPROXIMATE AND ARE SUBJECT TO MINOR DEVIATIONS AS MAY OCCUR OR BE NECESSARY IN CONSTRUCTION. MINOR DETAILS NOT SHOWN.	1. BATTERY CHARGER/COMPRESSOR LOCATED IN COMPARTMENT PER ORDER 2. BATTERY CHARGER INDICATOR BEHIND DRIVER'S SEAT DISPLAYED THROUGH WINDOW 3. DUAL L.E.D. LIGHT STRIPS LOCATED IN HOSE BED 4. ELEVEN ADJUSTABLE FULL WIDTH/FULL DEPTH SHELVES IN COMPARTMENT PER ORDER 5. FOUR FLOOR MOUNTED SLIDE-OUT TRAYS IN COMPARTMENT PER ORDER 6. ONE C-TECH (3) DRAWER ASSEMBLY IN COMPARTMENT PER ORDER 7. ONE SWING-OUT SPLIT TOOLBOARD IN COMPARTMENT PER ORDER 8. CIRCUIT BREAKER PANEL IN COMPARTMENT PER ORDER 9. ONE HANNAY ELECTRIC REWIND REEL MODEL 1618-17-18 LOCATED IN COMPARTMENT WITH 200' PER ORDER OF 10/3 CABLE	10. TRIDENT FOLDING STEPS ON AERIAL DEVICE 11. L.E.D. LIGHTING ON AERIAL LADDER SECTIONS 12. 2-WAY INTERCOM SYSTEM BETWEEN AERIAL TIP OR PLATFORM AND TURNTABLE 13. FIRE RESEARCH 3-WAY INTERCOM SYSTEM BETWEEN AERIAL TIP, PUMP PANEL AND TURNTABLE 14. LIFTING EYE ROPE RESCUE ATTACHMENT AT AERIAL TIP 15. 1500 GPM HIGH FLOW WATERWAY 16. AIR INLET RECESSED WITH DISCONNECT COUPLING LOCATED PER ORDER 17. FOUR 120V DUPLEX RECEPTACLE LOCATED IN COMPARTMENT PER ORDER 18. AERIAL LIMITED RETRACTION NOT REQUIRED 19. ONE TILT/SLIDE-OUT TRAY PER ORDER
--	--	--

Pierce MANUFACTURING INC.		JOB NO.	38397
		SCALE	DATE
		1:24	
TITLE		DRAWN BY	19JUL22
107' ASCENDANT AERIAL LADDER AND BODY ASSEMBLY		JGA	
FOR		CHECKED BY	22JUL22
RAMA FIRE RESCUE SERVICE		NDA	
RAMA, ON, CA		SHEET SIZE	SHEET NO.
DWG NO.		D	1 OF 1
38397AD			