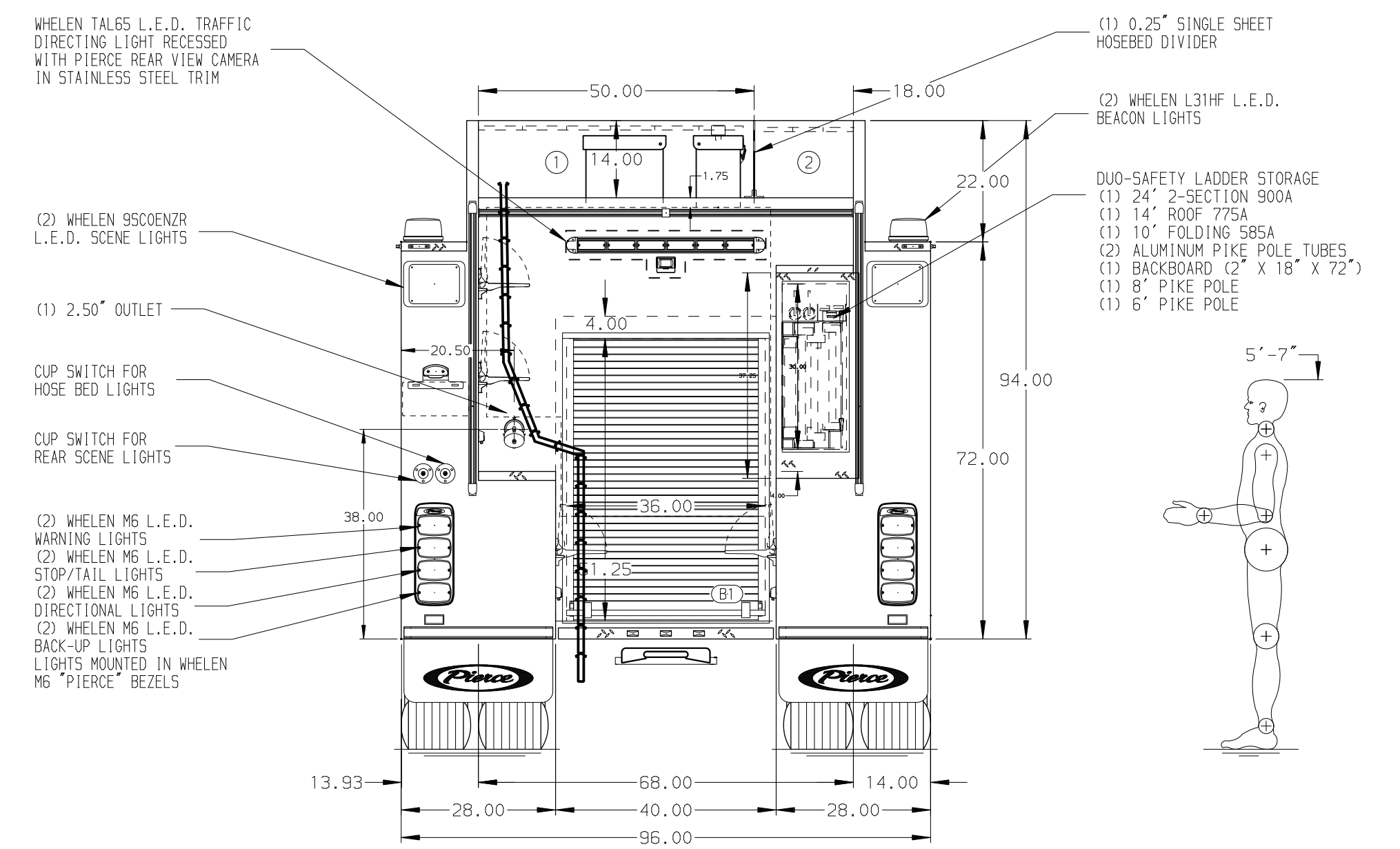
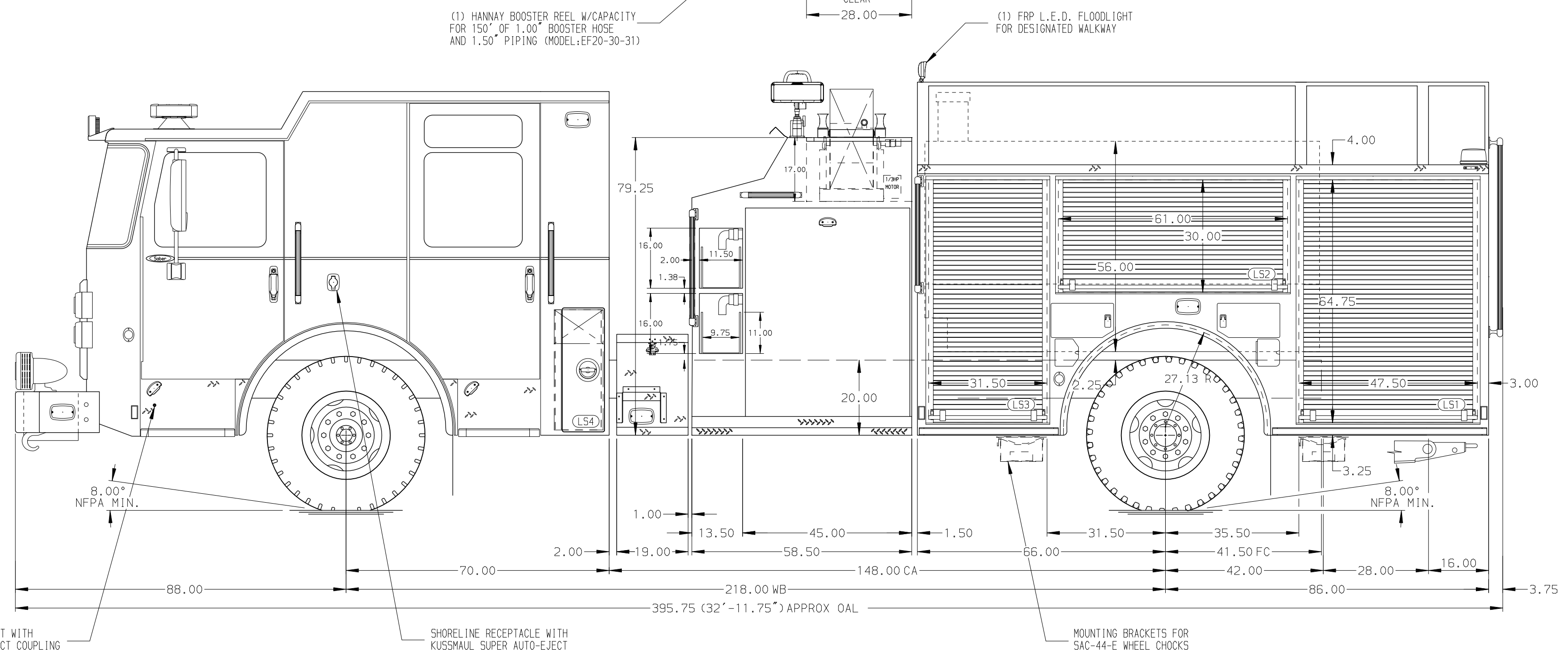


HOSEBED CAPACITIES
 ① - 1000' OF 5.00" D.J. POLY HOSE
 ② - 500' OF 3.00" D.J. POLY HOSE



ALUMINUM BODY

NOTE
 DIMENSIONS SHOWN ARE APPROXIMATE AND ARE SUBJECT TO MINOR DEVIATIONS AS MAY OCCUR OR BE NECESSARY IN CONSTRUCTION. MINOR DETAILS NOT SHOWN.

CUSTOMER APPROVAL				Pierce MANUFACTURING INC.		JOB NO.	38408
APPROVED BY:						SCALE	1:24
DATE:						DATE	
CHASSIS DATA	TITLE	1500-D-1020P, 1000G WATER, 20G FOAM, 152" FDLER BODY		DRAWN BY	JJB	16SEP22	
MAKE	FOR	ATTALLA FIRE DEPARTMENT		CHECKED BY	EGO	16SEP22	
PIERCE		ATTALLA, ALABAMA		SHEET SIZE		SHEET NO.	
MODEL	DWG NO.	38408AD					
REV	DATE	BY	CH	SABER FR			1 OF 1