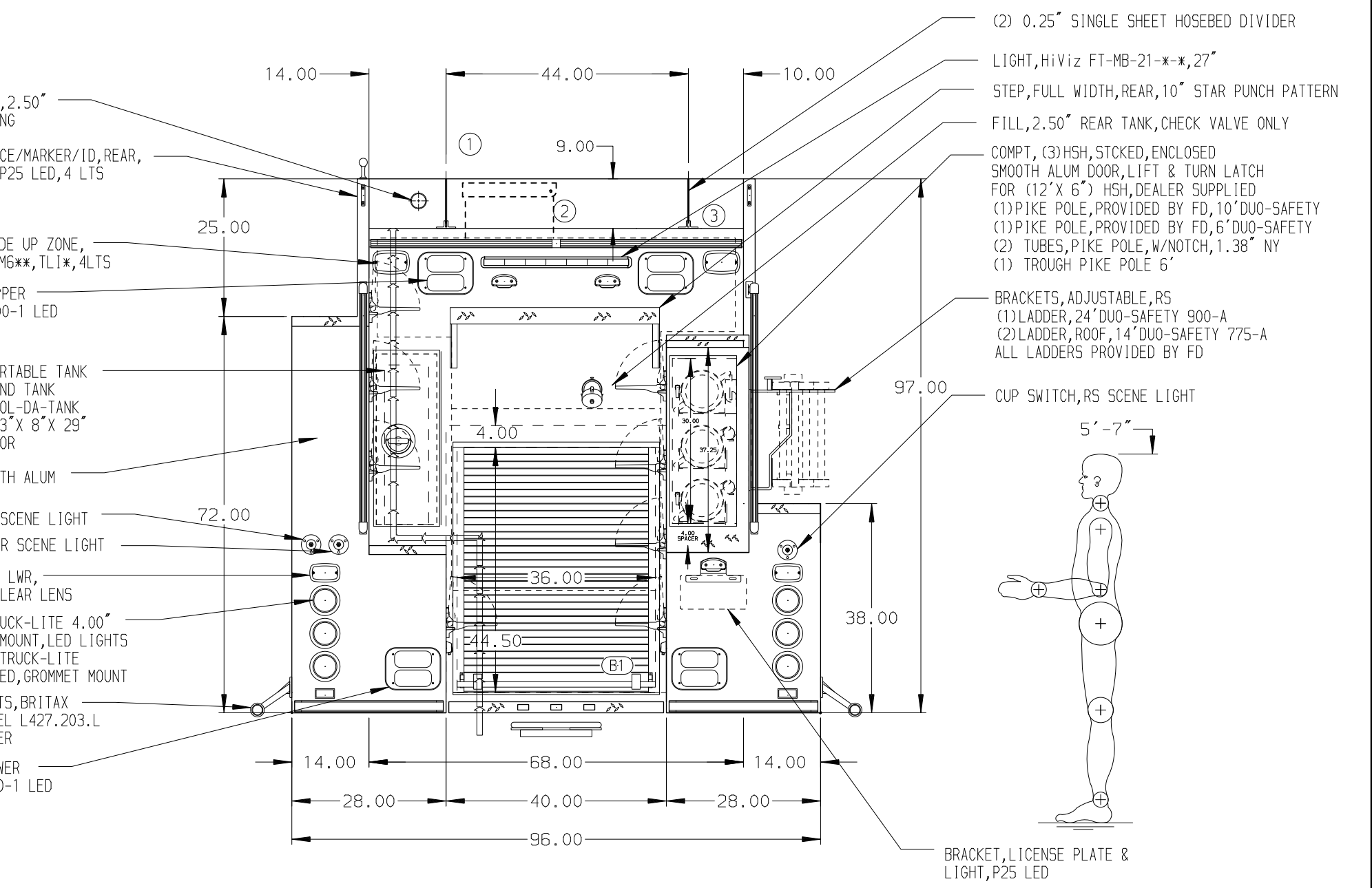


- HOSEBED CAPACITIES**
- ① 350' OF 2.50" D.J. POLY HOSE
  - ② 1000' OF 3.00" D.J. POLY HOSE
  - ③ 200' OF 1.75" D.J. POLY HOSE



**ALUMINUM BODY**

**NOTE**  
DIMENSIONS SHOWN ARE APPROXIMATE AND ARE SUBJECT TO MINOR DEVIATIONS AS MAY OCCUR OR BE NECESSARY IN CONSTRUCTION. MINOR DETAILS NOT SHOWN.

13DEC23	VHO	NAS	CHASSIS	TITLE
04DEC23	RWR	NAS	DATA	FOR
21JUN23	RWR	NAS	MAKE	DWG
04MAY23	RHU	NAS	FL	NO.
09MAR23	JLA	AJA	MODEL	
REV	DATE	BY	CH	

**Pierce MANUFACTURING INC.**

JOB NO. 38419

SCALE 1:24 DATE

DRAWN BY JLA 11FEB23

CHECKED BY AJA 17FEB23

SHEET SIZE D SHEET NO. 1 OF 1

1250-D-1500 GAL POLY, 171" BODY, LS FH FRNT&RR FDLER, RS LOW FDLER, 45" TOP MOUNT, 24" WALKWAY, (2) 1.5" CROSSLAYS  
OGEMA VOLUNTEER FIRE COMPANY  
OGEMA, WISCONSIN

DWG NO. 38419AD