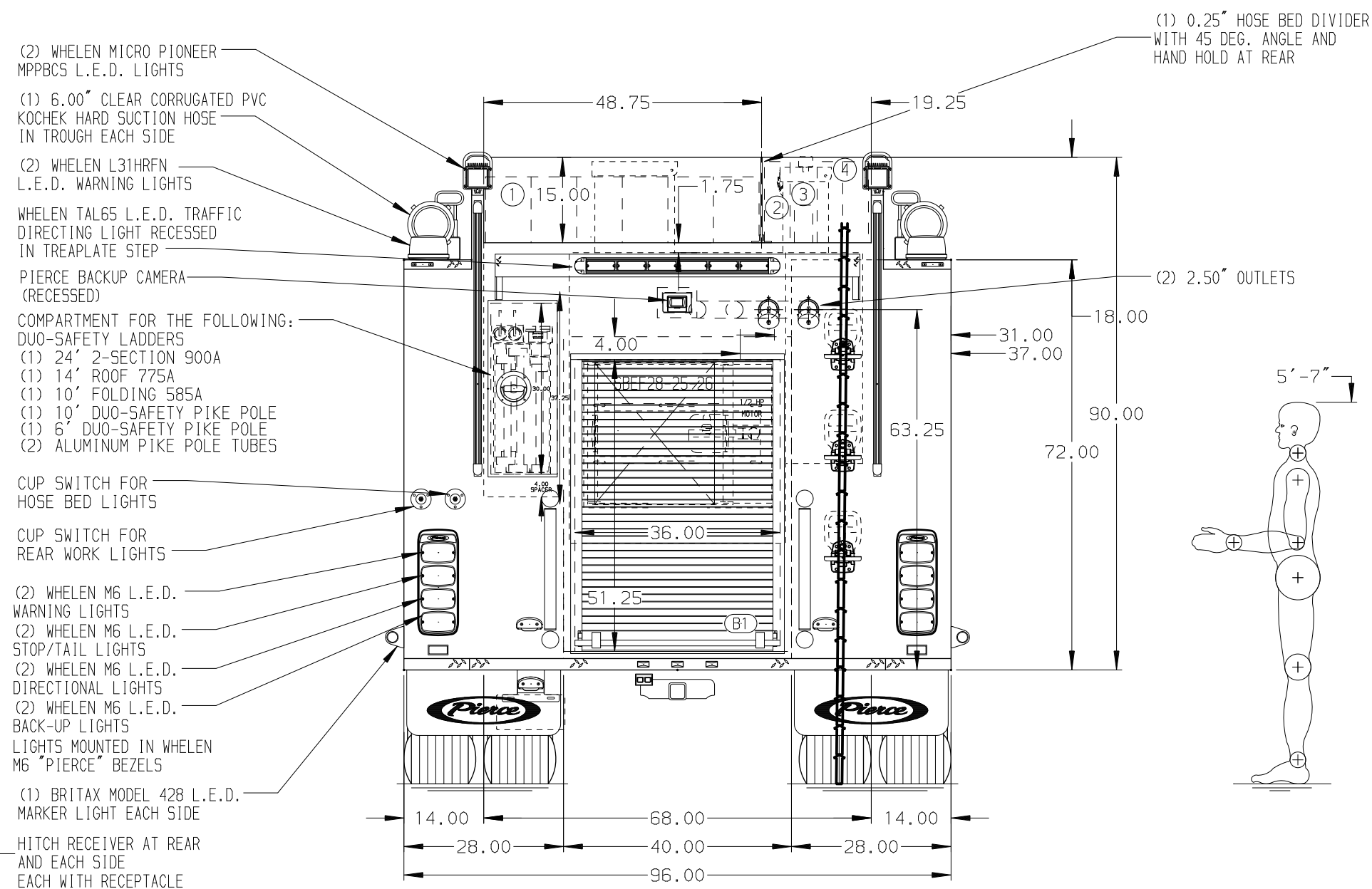
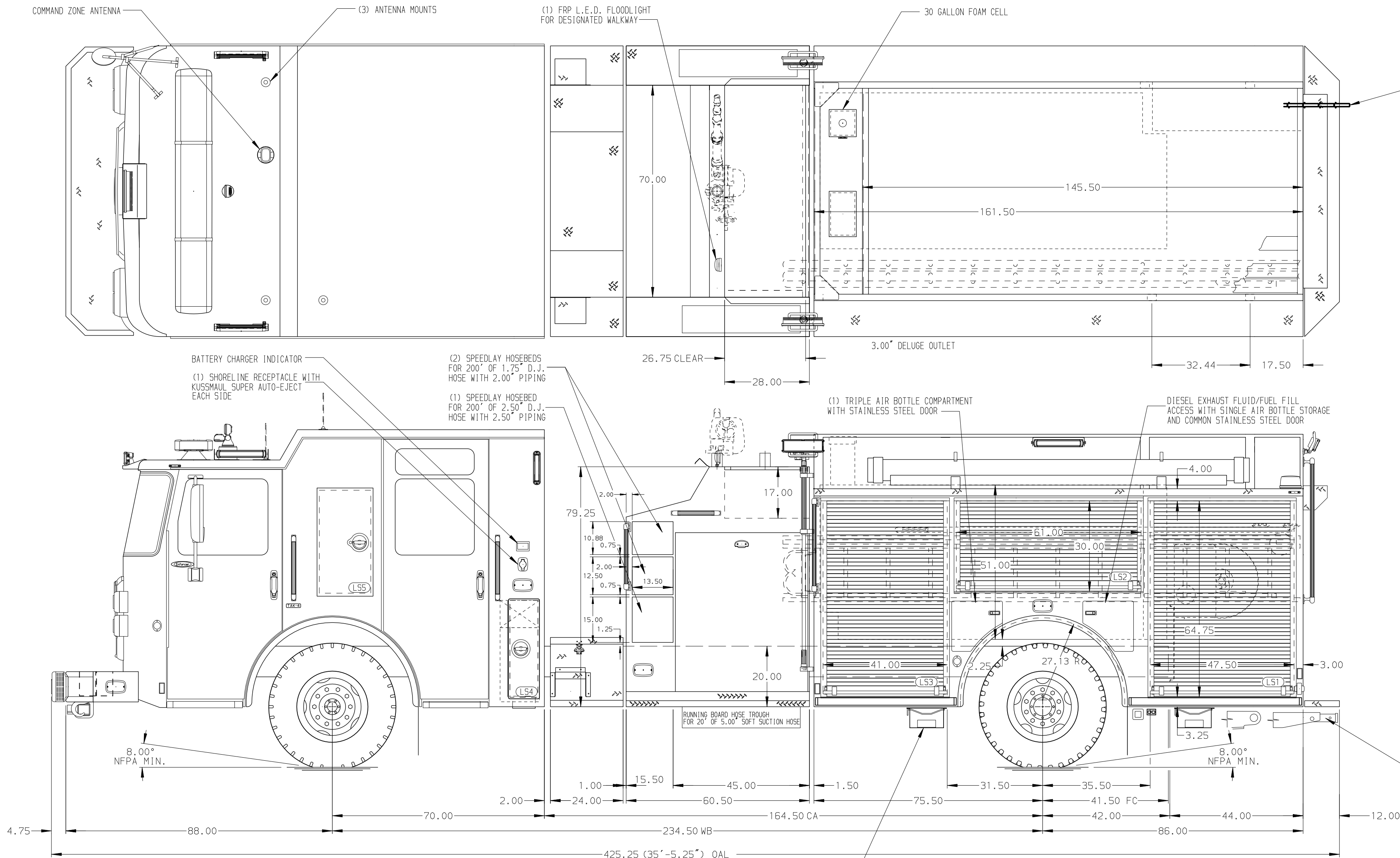


- HOSEBED CAPACITIES
- ① - 1000' OF 5.00" D.J.POLY HOSE
 - ② - 200' OF 2.50" D.J.POLY HOSE
 - ③ - 100 OF 1.75" D.J.POLY HOSE
 - ④ - 400' OF 2.50" D.J.POLY HOSE



ALUMINUM BODY


MAXIMUM O.A.H 116"

NOTE

DIMENSIONS SHOWN ARE APPROXIMATE AND ARE SUBJECT TO MINOR DEVIATIONS AS MAY OCCUR OR BE NECESSARY IN CONSTRUCTION. MINOR DETAILS NOT SHOWN.

1. JUMPER STUDS AT DRIVER SIDE CAB STEP
2. ONSPOT AUTOMATIC TIRE CHAINS TO BE PROVIDED AT REAR
3. AIR INLET/OUTLET LOCATED IN DS STEP WELL
4. BATTERY CHARGER LOCATED BEHIND PASSENGER'S SEAT
5. SEVEN FULL WIDTH/DEPTH ADJUSTABLE SHELVES IN COMPARTMENTS PER ORDER
6. ONE FLOOR MOUNTED SLIDE-OUT TRAY IN COMPARTMENT PER ORDER
7. XANTREX INVERTER LOCATED IN COMPARTMENT PER ORDER
8. SIX 120V DUPLEX RECEPTACLES LOCATED PER ORDER
9. HANNAY BOOSTER REEL WITH CAPACITY FOR 150' OF 1.00" HOSE LOCATED IN REAR COMPARTMENT ON REAR WALL

REV	DATE	BY	CH	ENFORCER
1	11JAN24	BTH	DTJ	CHASSIS DATA
2	09NOV23	BTH	DTJ	MAKE
3	29SEP23	BTH	DTJ	PIERCE
4	30JUN23	BTH	EGO	MODEL

 MANUFACTURING INC.		JOB NO.	38480
		SCALE 1:24	DATE
TITLE	2000-D-1030P, 1000G WATER W/ 30G FOAM, 161" BODY (3) SPEEDLAYS, LADDERS BETWEEN TANK AND SS, DELUGE	DRAWN BY BTH	14JUN23
FOR	PARSON FIRE DEPARTMENT PARSONS, KANSAS	CHECKED BY EGO	22JUN23
DWG NO.	38480AD	SHEET SIZE D	SHEET NO. 1 OF 1