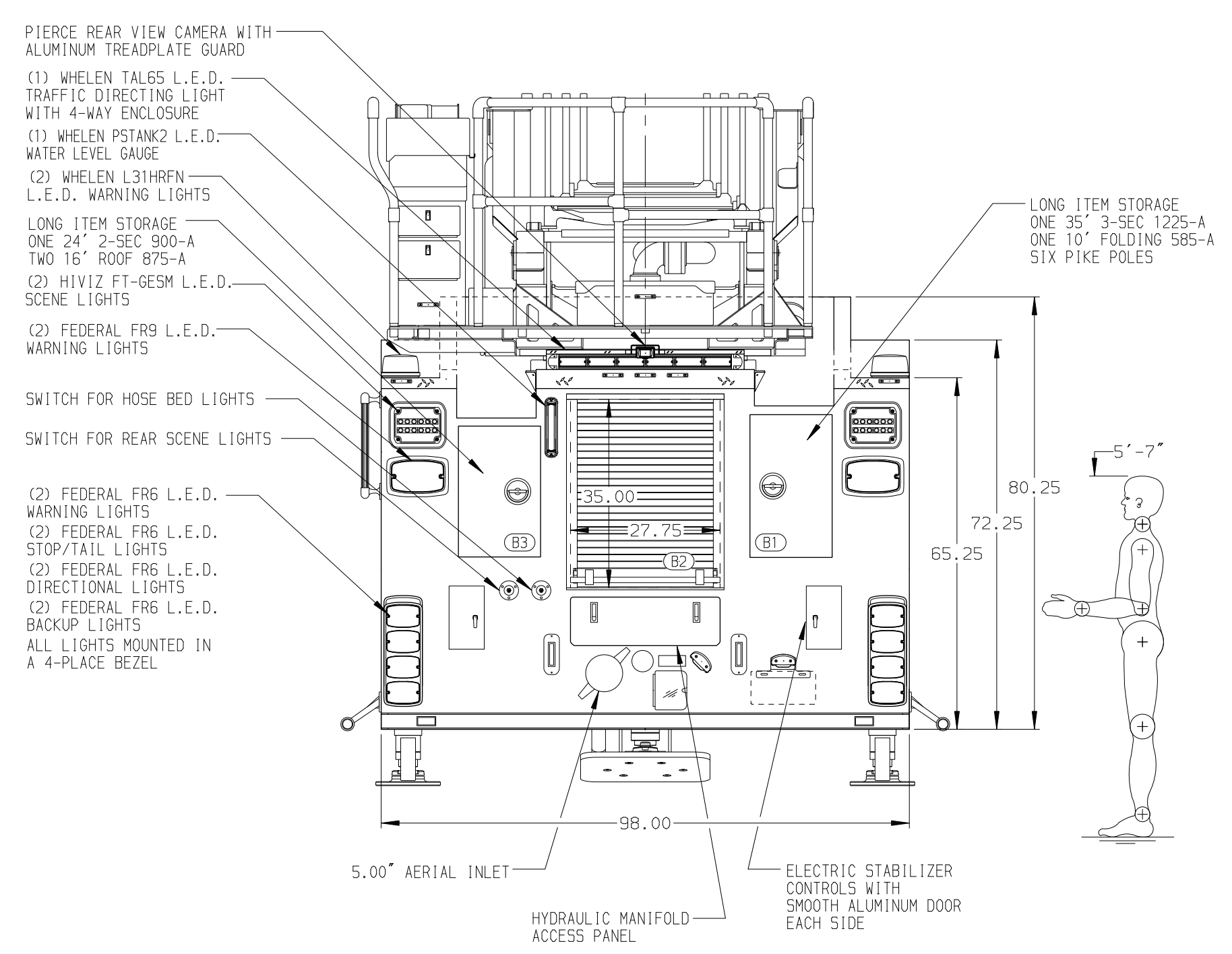
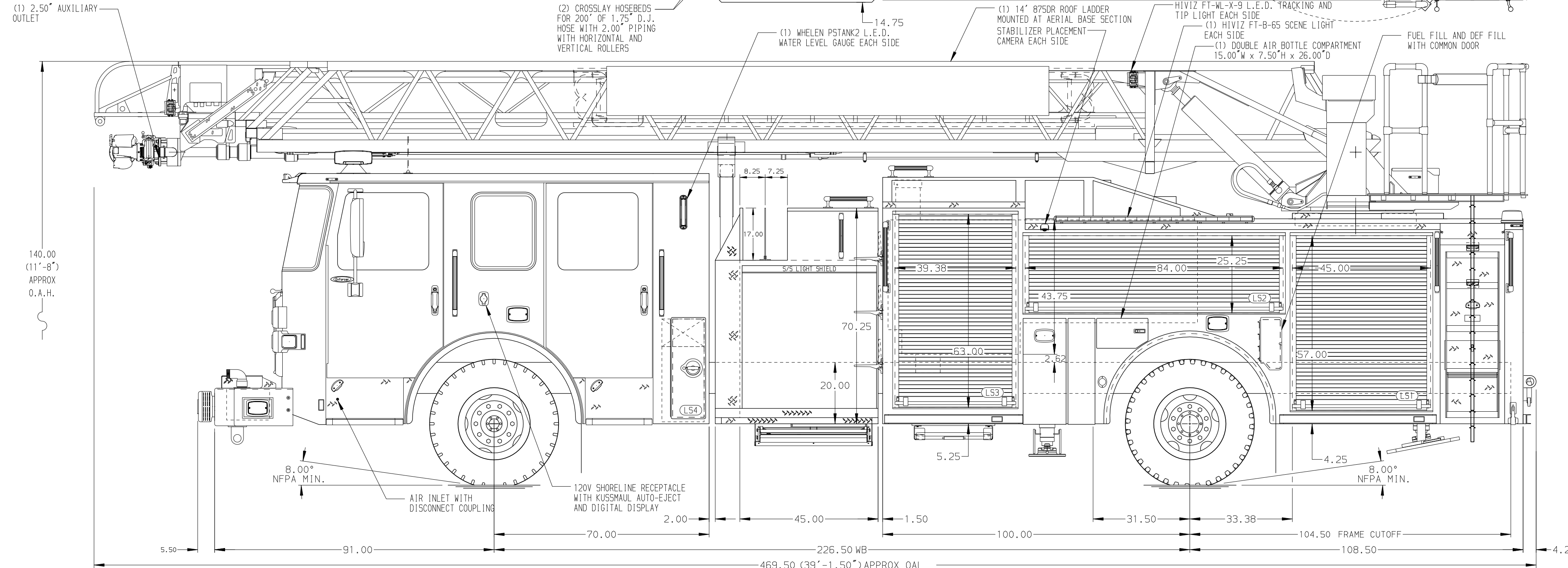


BODY	WATER TANK
107' ASL Aluminum Body	470 Gallon Poly Water Tank
COMPT, LEFT SIDE FRONT	Foam System
Full Height RollUp Forward	External Foam System
COMPT, LEFT SIDE REAR	Foam Cell
Full Height RollUp Rearward	30 Gallon Foam Cell, Reduced Water
COMPT, RIGHT SIDE FRONT	
Full Height RollUp Forward	
COMPT, RIGHT SIDE REAR	
Full Height RollUp Rearward	



CHASSIS Enforcer Chassis 450 HP Cummins L9 Engine	CAB 7000 Enforcer Cab 22' Painted Steel Underslung	AXLE, FRONT, CUSTOM 23,000 Lb Dana Axle AXLE, REAR 33,500 Lb Meritor Axle	TRANSMISSION Allison 5th Gen, 3000 EV5 P	PUMPHOUSE 45" Control Zone Side Mount PUMP 1500 GPM Hole QMAX	CROSSLAYS, 1.50" (2) 1.50" Standard Capacity CROSSLAYS, 2.50" 2.50" Crosslay Not Required	SPEEDLAYS Speedlays Not Required GENERATOR Generator Not Required	-	-	-	CUSTOMER APPROVAL APPROVED BY: _____ DATE: _____	MANUFACTURING INC.	JOB NO. 38510-01-02 SCALE 1:24 DATE
NOTE DIMENSIONS SHOWN ARE APPROXIMATE AND ARE SUBJECT TO MINOR DEVIATIONS AS MAY OCCUR OR BE NECESSARY IN CONSTRUCTION. MINOR DETAILS NOT SHOWN.											DRAWN BY JGA CHECKED BY JJR SHEET SIZE D SHEET NO. 1 OF 2	
TITLE 107' ASCENDANT AERIAL LADDER AND BODY ASSEMBLY MAKE PIERCE MODEL ENFORCER FOR MIAMI DADE FIRE RESCUE MIAMI, FL DWG NO. 38510AD-SH1												