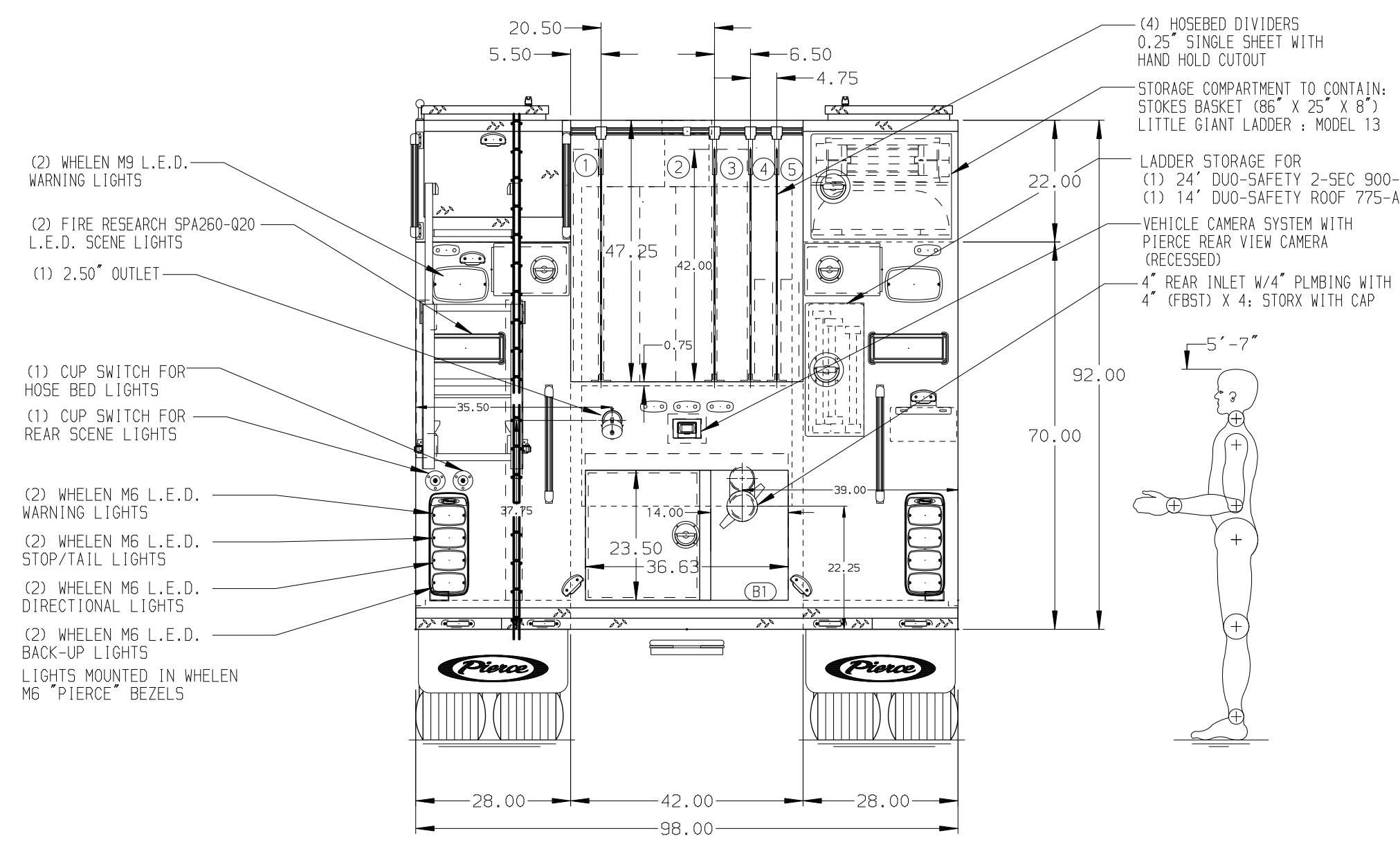
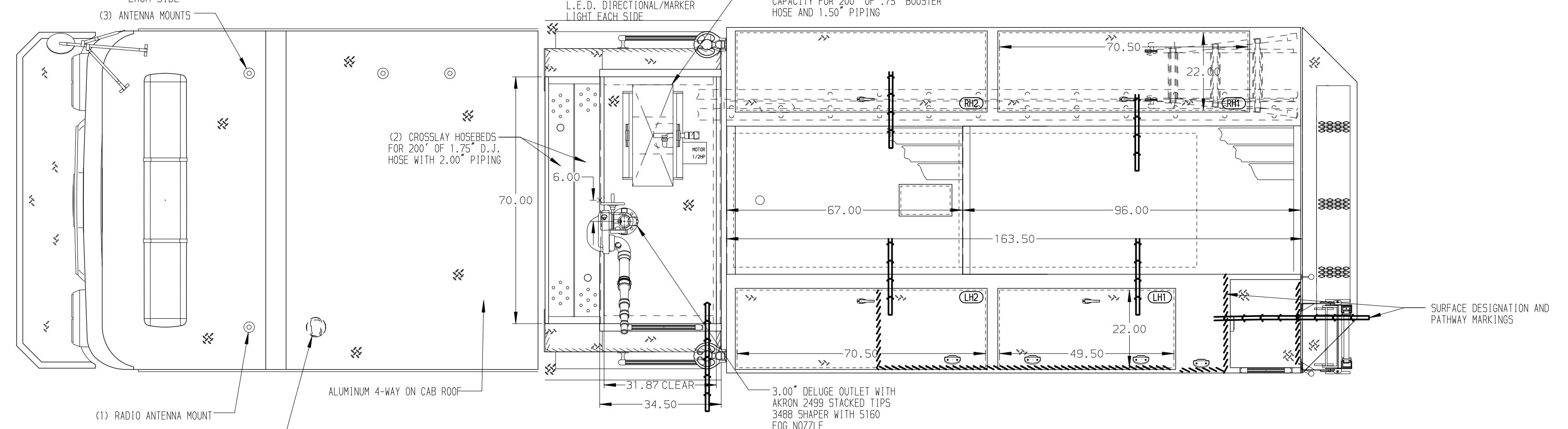


- HOSEBED CAPACITIES
- ① 400' OF 2.50" D.J. HOSE
 - ② 1000' OF 4.00" D.J. HOSE
 - ③ 400' OF 3.00" D.J. HOSE
 - ④ 200' OF 1.75" D.J. HOSE
 - ⑤ 200' OF 1.75" D.J. HOSE



ALUMINUM BODY MAXIMUM O.A.L. 379" MAXIMUM O.A.H. 126" SIDE ROLL AND FRONTAL IMPACT PROTECTION

NOTE
DIMENSIONS SHOWN ARE APPROXIMATE AND ARE SUBJECT TO MINOR DEVIATIONS AS MAY OCCUR OR BE NECESSARY IN CONSTRUCTION. MINOR DETAILS NOT SHOWN.

- 1. AIR OUTLET WITH SHUT-OFF VALVE LOCATED DRIVER'S SIDE PUMP PANEL
- 2. ONSPOT AUTOMATIC TIRE CHAINS
- 3. KUSSMAUL BATTERY CHARGER/AIR COMPRESSOR LOCATED BEHIND DRIVER'S SEAT
- 4. BATTERY CHARGER LOCATED BEHIND DRIVER'S SEAT
- 5. BATTERY CHARGER INDICATOR LOCATED ON DRIVER'S SEAT RISER
- 6. DUAL L.E.D. LIGHT STRIPS LOCATED IN HOSE BED
- 7. CHECK WARDEN SAFETY MOUNTING BRACKETS MOUNTED AT FINAL INSPECTION

REV	DATE	BY	CH	ENFORCER
27JUN24	KLE	COS		CHASSIS DATA
15MAY24	KLE	COS		MAKE
09APR24	KLE	COS		PIERCE
29FEB24	KLE	COS		MODEL
27FEB24	KLE	COS		

		JOB NO.	38526
		SCALE	1:24
TITLE 1500-D-700P, 700 WATER W/O FOAM, 163" HDRP 3G (2) CROSSLAYS, DELUGE, RS FULL DEPTH BODY LADDER RACK	FOR NORRISTOWN FIRE DEPARTMENT NORRISTOWN, PENNSYLVANIA	DATE	
		DRAWN BY	LME 12JUL23
DWG NO. 38526AD-SH1	NO.	CHECKED BY	CDU 17JUL23
		SHEET SIZE	D SHEET NO. 1 OF 1