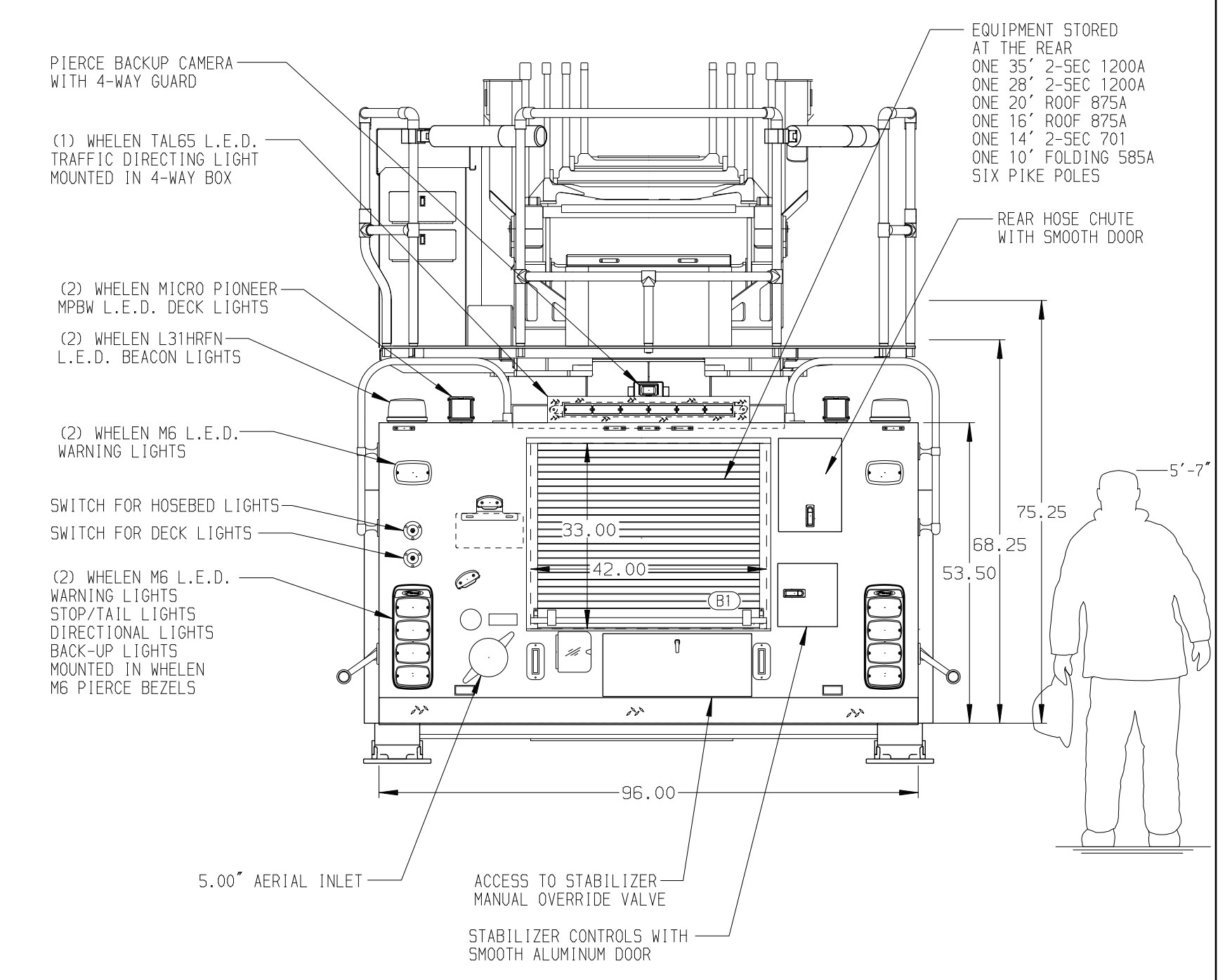


BODY 107' Tandem Axle Platform Aluminum Body COMPT, DRIVER SIDE FRONT FH/FD Rollup w/o Chute COMPT, DRIVER SIDE REAR FH/FD Rollup and Lift-up rearward COMPT, PASSENGER SIDE FRONT Full Height Rollup Forward COMPT, PASSENGER SIDE REAR Full Height Rollup and Liftup Rearward	WATER TANK 500 Gallon Notched Poly Water Tank Foam System Plumbing for Future Husky Foam System Foam Cell 20 Gallon Foam Cell, Non-Reduced Water
---	--



CHASSIS Enforcer Chassis ENGINE 500 HP Cummins X12 Engine	CAB 7010 Enforcer Cab BUMPER 22" Extended Painted Steel	AXLE, FRONT, CUSTOM 22,800 Lb TAK-4 Axle AXLE, REAR 44,000 Lb Meritor Axle	TRANSMISSION Allison 5th Gen, 4500 EV5 P	PUMPHOUSE 52" Control Zone Side Mount PUMP 2000 GPM Waterous CSU	CROSSLAYS, 1.50" (2) 1.50" Standard Capacity CROSSLAYS, 2.50" (1) 2.50" Standard Capacity	SPEEDLAYS Speedlays Not Required GENERATOR Generator Not Required	SAFETY Side Roll and Frontal Impact Protection	CUSTOMER APPROVAL APPROVED BY: _____ DATE: _____		JOB NO. 38554 SCALE 1:24 DATE DRAWN BY ANZ 22MAR22 CHECKED BY THS 22MAR22 SHEET SIZE D SHEET NO. 1 OF 1
NOTE DIMENSIONS SHOWN ARE APPROXIMATE AND ARE SUBJECT TO MINOR DEVIATIONS AS MAY OCCUR OR BE NECESSARY IN CONSTRUCTION. MINOR DETAILS NOT SHOWN.										
1. 21.00" LIMITED RETRACTION REQUIRED 2. ONE 1.50" OUTLET WITH 2.00" PIPING AND SHIVEL LOCATED IN CENTER BUMPER TRAY 3. SHORELINE RECEPTACLE WITH KUSSMALL SUPER AUTO-EJECT LOCATED ON DRIVER SIDE OF THE CREWCAB 4. AIR INLET WITH DISCONNECT COUPLING IN THE DRIVER SIDE STEPWELL 5. BATTERY CHARGER LOCATED PER SHOP ORDER 6. BATTERY CHARGER INDICATOR ON DRIVER'S SEAT RISER WITH BRACKET 7. FIVE ADJUSTABLE SHELVES IN COMPARTMENTS PER SHOP ORDER 8. ONE FLOOR MOUNTED SLIDE-OUT TRAY IN COMPARTMENT PER SHOP ORDER 9. ONE SWING-OUT TOOL BOARD WITH PEGBOARD PATTERN IN COMPARTMENT PER SHOP ORDER 10. 1500 GPM HIGH FLOW WATERWAY 11. 3.00" RAISED AERIAL PEDESTAL										
REV DATE BY CH	CHASSIS DATA MAKE PIERCE MODEL ENFORCER TITLE 107' ASCENDANT AERIAL LADDER AND BODY ASSEMBLY FOR PIERCE FIELD UNIT APPLETON, WI DWG NO. 38554AD									