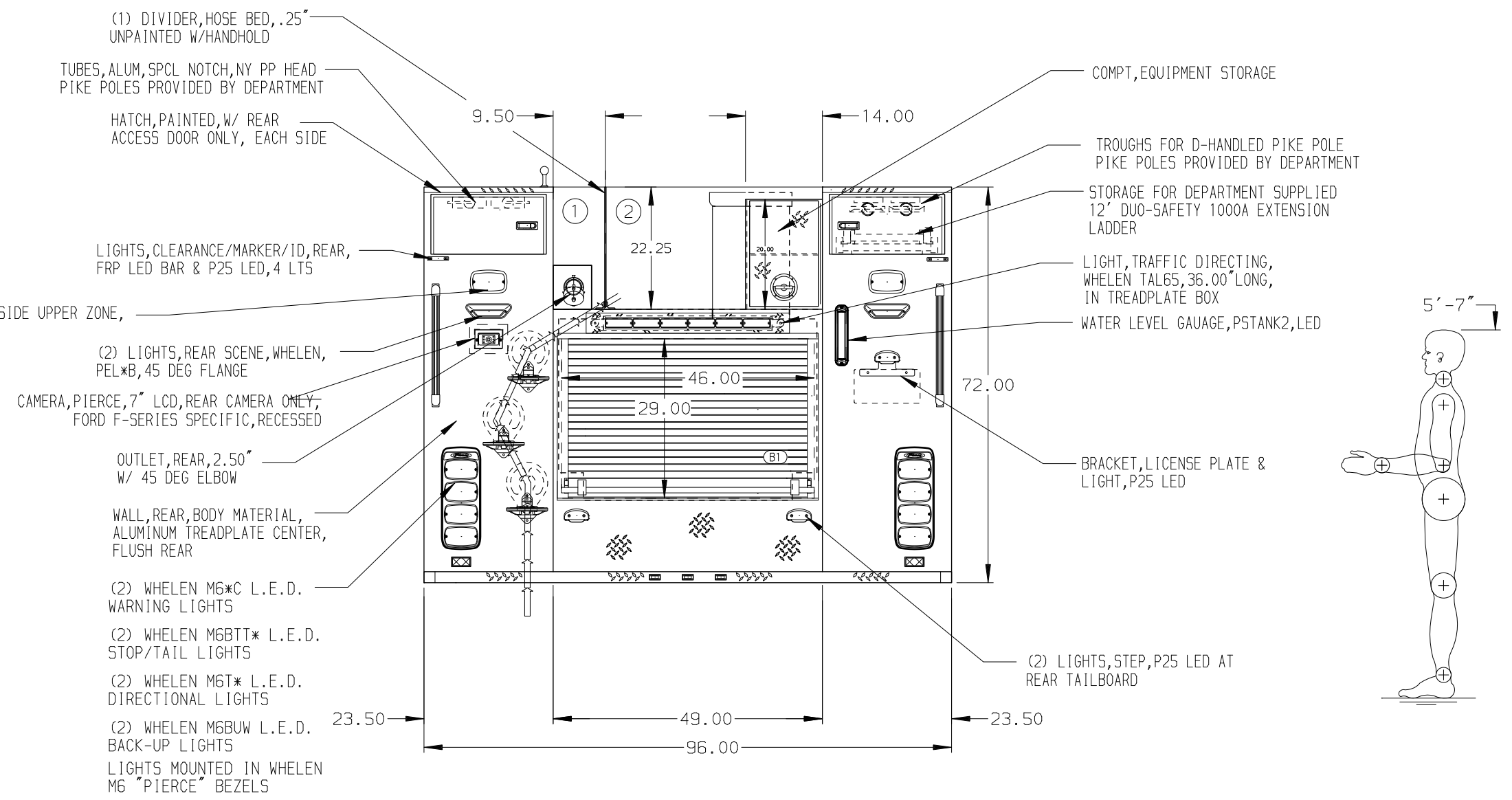
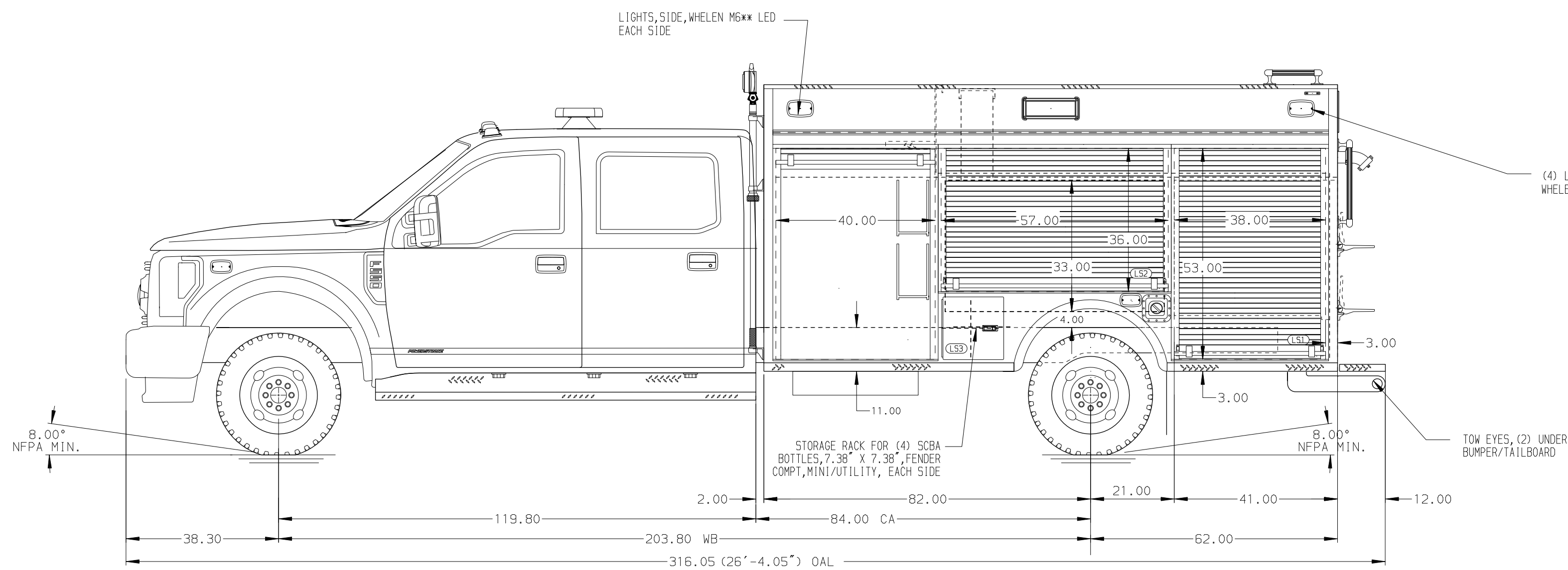


- HOSEBED CAPACITIES
- ① 200' OF 2.50\"/>



ALUMINUM BODY

NOTE
DIMENSIONS SHOWN ARE APPROXIMATE AND ARE SUBJECT TO MINOR DEVIATIONS AS MAY OCCUR OR BE NECESSARY IN CONSTRUCTION. MINOR DETAILS NOT SHOWN.

2022 MODEL YEAR SHOWN FOR REFERENCE ONLY, 2023 CAB SYMBOLS WERE NOT AVAILABLE AT TIME OF RELEASE TO MANUFACTURING.

REV.	DATE	BY	CHK'D	CHASSIS DATA
26OCT23		RWR	CCS	CHASSIS
20SEP23		RWR	CCS	FORD
24JUL23		RWR	AJA	MODEL F-550 4X4

PIERCE MANUFACTURING INC. BRADENTON, FLORIDA		JOB NO.	38643
		DATE	02APR21
TITLE	1000-D-300 POLY, 84"CA, MINI PUMPER BODY (2) SPEEDLAYS	SCALE	1:24
FOR	ROCKWELL FIRE DEPARTMENT ROCKWELL, IA	DRAWN BY	RWR
DRWG. NO.	38643AD	CHK'D BY	AJA
		SHEET NO.	1 OF 1
		SHEET SIZE	D