

**PUMPER
BODY**

Medium Aluminum 2nd Gen Pumper

CHASSIS

Enforcer Chassis

**CHASSIS
AXLE, FRONT, CUSTOM**

18,000 Lb Dana Axle

AXLE, REAR

24,000 Lb Meritor Axle

ENGINE

450 HP Cummins L9

TRANSMISSION

Allison 5th Gen, 3000 EVS P

BUMPER

16" Extended Stainless Steel

CAB

7010 Enforcer Cab

**BODY
WATER TANK**

750 Gallon New York Style Water Tank

COMPT, PUMPER, REAR

30.75" FF RollUp Rear Compt

COMPT, PUMPER, DRIVER SIDE

152" RollUp Full Height Front & Rear FDLR

COMPT, PUMPER PASS. SIDE

152" RollUp Full Height Front & Rear FDLR

**FIRE SUPPRESSION
PUMPHOUSE**

48" Control Zone Side Mount

PUMP

1500 GPM Waterous CSU

CROSSLAYS, 1.50"

(2) 1.50" Standard Capacity

CROSSLAYS, 2.50"

(1) 2.50" Standard Capacity

SPEEDLAYS

Speedlays Not Required

GENERATOR

Generator Not Required

Foam System

Piping For Future Husky 3/12 Foam System

Foam Cell

20 Gallon Foam Cell, Not Reduced Water

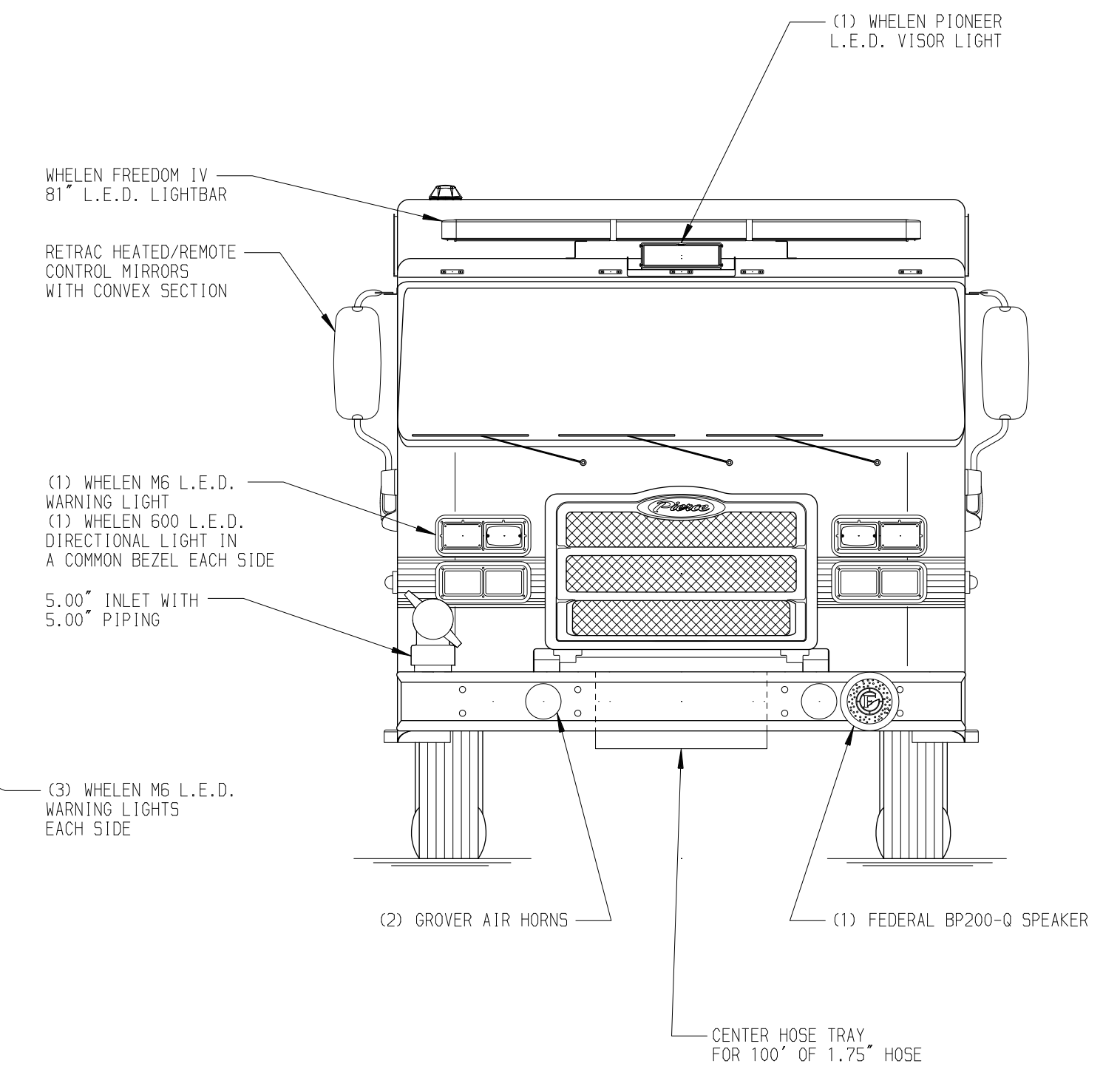
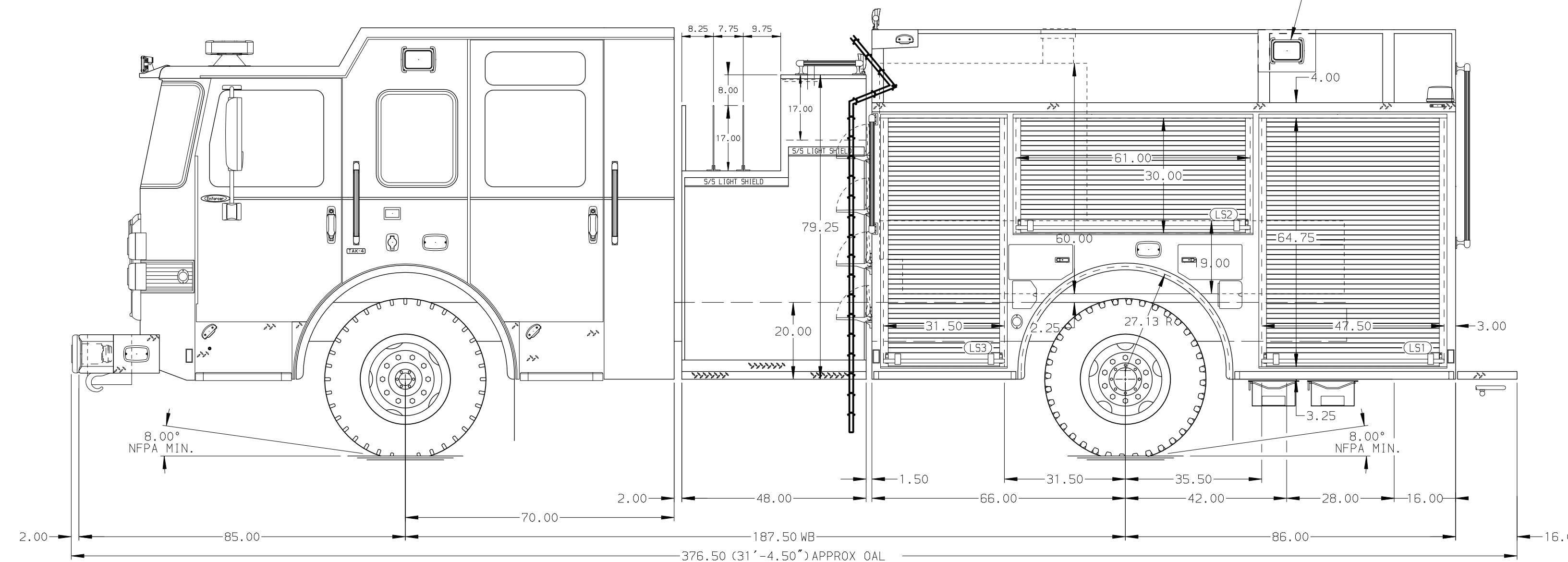
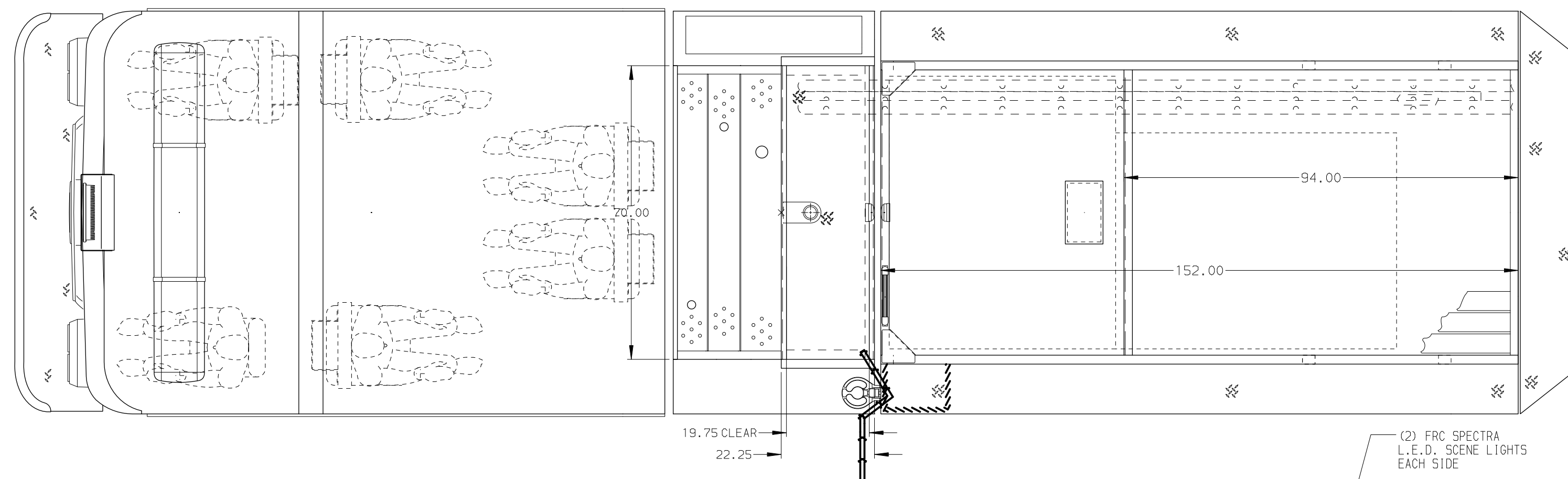
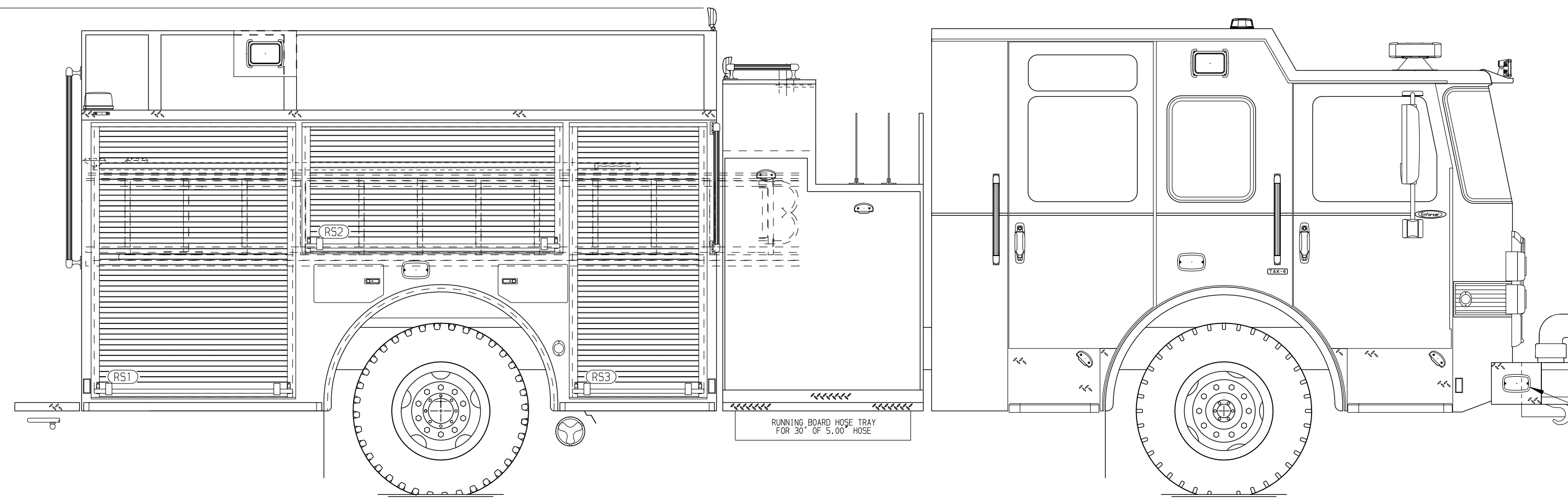
Side Roll and Frontal Impact Protection

NOTE

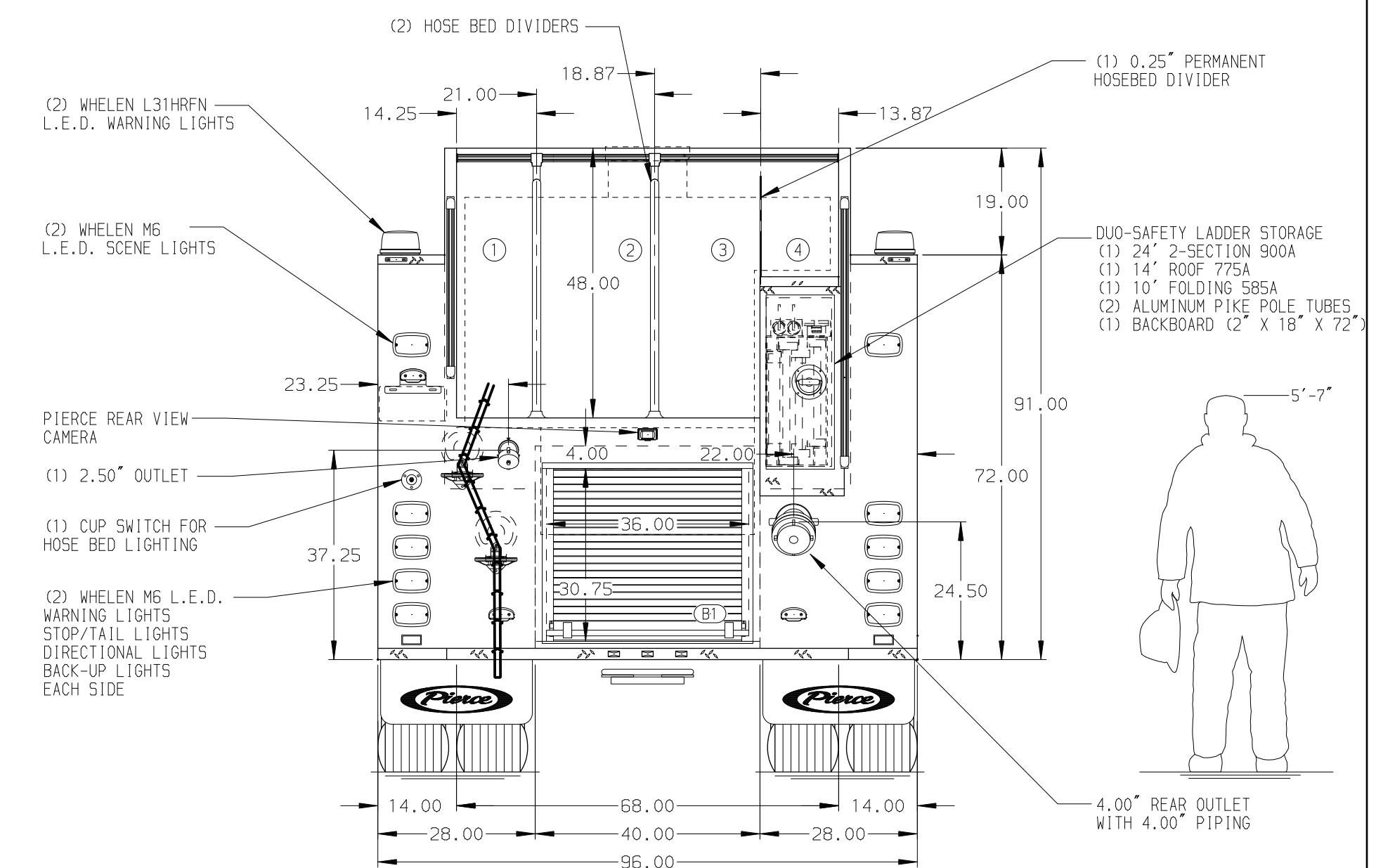
DIMENSIONS SHOWN ARE APPROXIMATE AND ARE SUBJECT TO MINOR DEVIATIONS AS MAY OCCUR OR BE NECESSARY IN CONSTRUCTION. MINOR DETAILS NOT SHOWN.

- ONE 1.50 OUTLET WITH 2.00 PIPING AND SWIVEL LOCATED IN CENTER BUMPER TRAY
- SHORELINE RECEPTACLE WITH KUSSMAUL SUPER AUTO-EJECT LOCATED ON DRIVER SIDE OF THE CAB
- AIR INLET WITH DISCONNECT COUPLING IN THE DRIVER SIDE STEPWELL
- BATTERY CHARGER LOCATED BEHIND DRIVER'S SEAT
- BATTERY CHARGER INDICATOR ON DRIVER SIDE OF CAB
- FOUR ADJUSTABLE SHELVES IN COMPARTMENTS PER SHOP ORDER
- PEGBOARD ON BACK WALL LOCATED PER SHOP ORDER

122.00
(10'-2")
APPROX
O.A.H.



HOSEBED CAPACITY	
BED 1	1000' OF 2.50" D.J. POLY HOSE
BED 2	1200' OF 4.00" D.J. POLY HOSE
BED 3	1000' OF 2.50" D.J. POLY HOSE
BED 4	OPEN



CUSTOMER APPROVAL

APPROVED BY: _____
DATE: _____



JOB NO. 38644

SCALE 1:24 DATE

REV	DATE	BY	CH	ENFORCER

TITLE	FOR	DWG NO.
Pierce Pumper Approval Drawing	Berwyn Fire Department	38644AD

DRAWN BY	CHECKED BY	SHEET SIZE	SHEET NO.
MMF	COL	D	1 OF 1