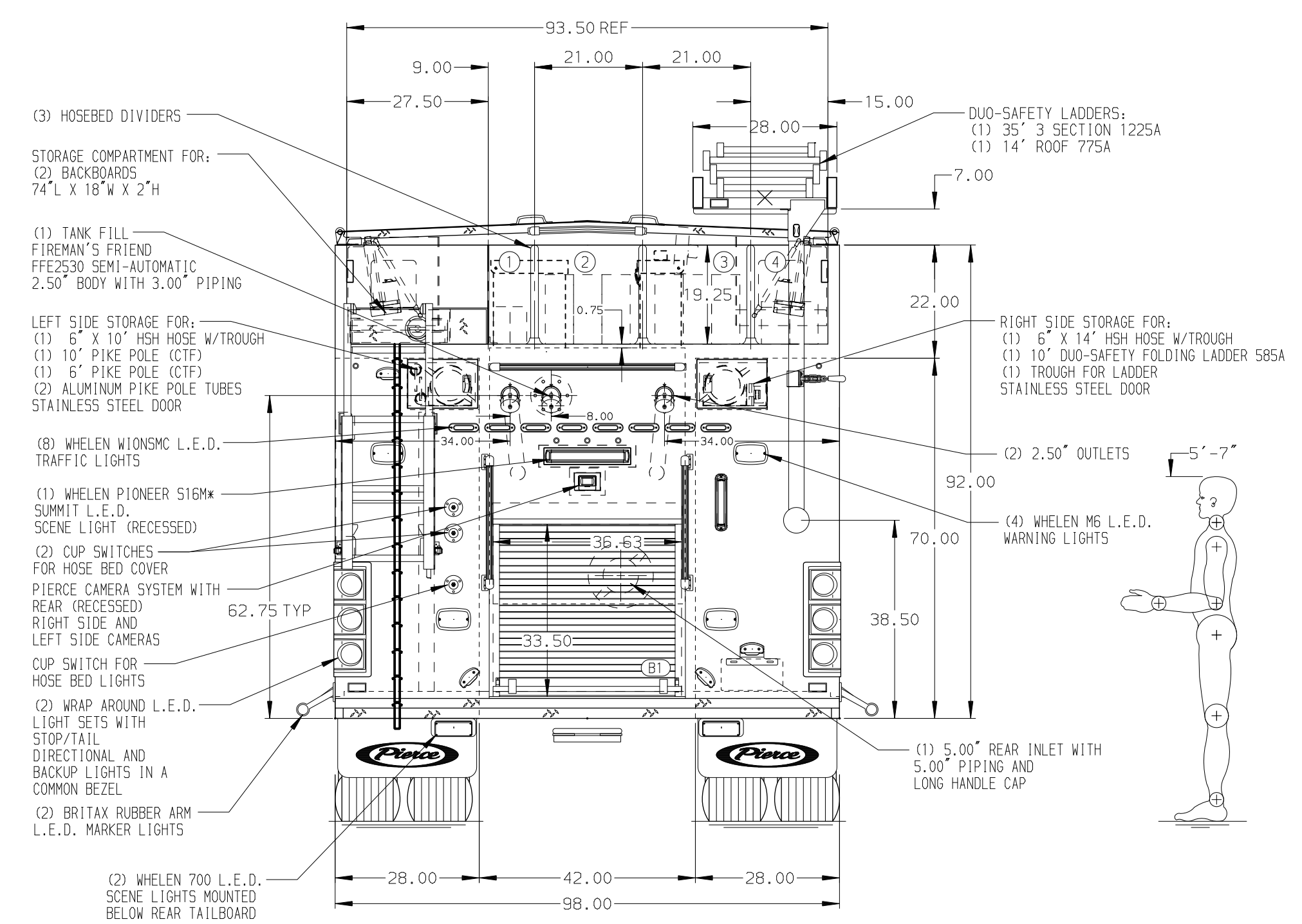
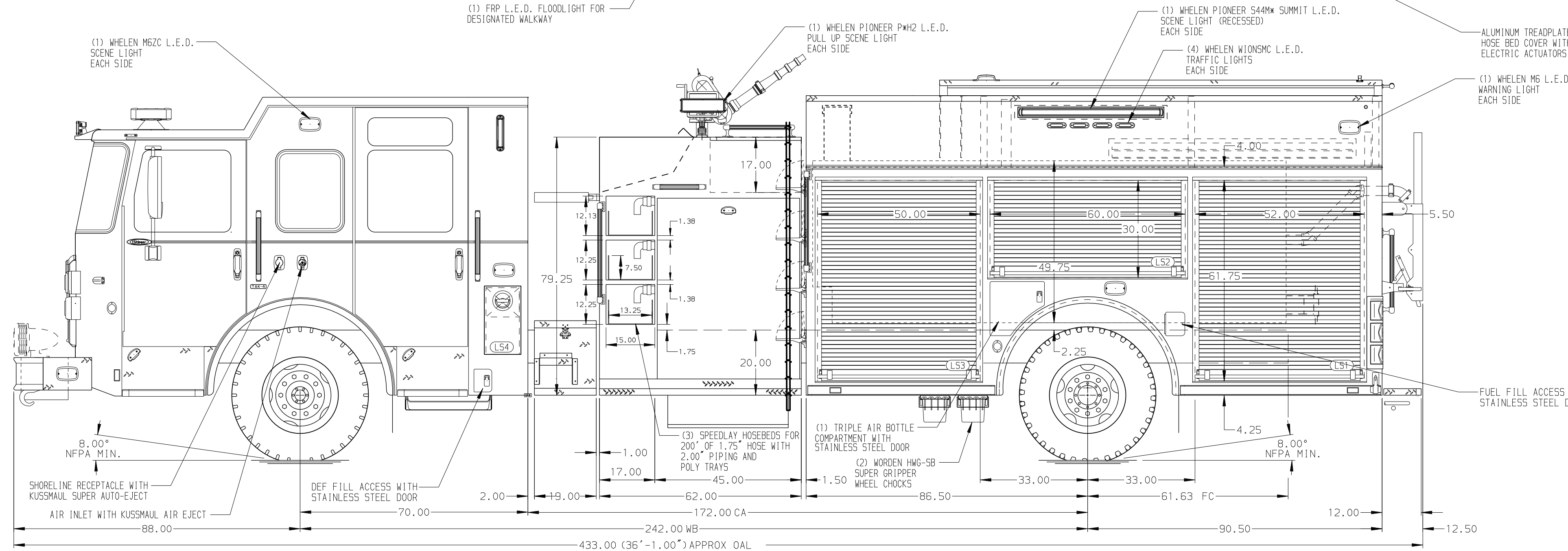


- HOSEBED CAPACITIES
- ① - 200' OF 1.75" DJP HOSE
  - ② - 500' OF 3.00" DJP HOSE
  - ③ - 500' OF 3.00" DJP HOSE
  - ④ - 200' OF 3.00" DJP HOSE



ALUMINUM BODY

SIDE ROLL AND FRONTAL IMPACT PROTECTION

NOTE  
DIMENSIONS SHOWN ARE APPROXIMATE AND ARE SUBJECT TO MINOR DEVIATIONS AS MAY OCCUR OR BE NECESSARY IN CONSTRUCTION. MINOR DETAILS NOT SHOWN.

1. RECEPTACLE FOR BATTERY CHARGER LOCATED IN DRIVER'S SIDE STEPWELL
2. SHORELINE RECEPTACLE WITH KUSSMAUL SUPER AUTO-EJECT LOCATED ON DRIVER SIDE OF THE CAB
3. DUAL L.E.D. LIGHT STRIPS LOCATED IN HOSE BED
4. THREE ADDITIONAL POLY TRAYS SHIPPED LOOSE
5. COLD CLIMATE PACKAGE LEVEL 2
6. WINGS/BULKHEAD AND MICROPHONE/SPEAKER LOCATED AT CONTROL PANEL

REV	DATE	BY	CH	ENFORCER
1	18MAR24	SAM	AST	MAKE
2	02FEB24	SAM	AST	PIERCE
3	01DEC23	SAM	PHA	MODEL

		JOB NO.	38664
		SCALE	1:24
<b>TITLE</b> 1500-D-1000P, 980G WATER W/20G FOAM, 177" HDRP BODY (3) SPEEDLAYS, HYDRAULIC LADDER RACK, DELUGE	<b>FOR</b> NEGAUNEE TOWNSHIP FIRE DEPARTMENT NEGAUNEE, MICHIGAN	DRAWN BY	SAM
		CHECKED BY	PHA
<b>DWG NO.</b> 38664AD-SH1	<b>NO.</b>	SHEET SIZE	D
		SHEET NO.	1 OF 2