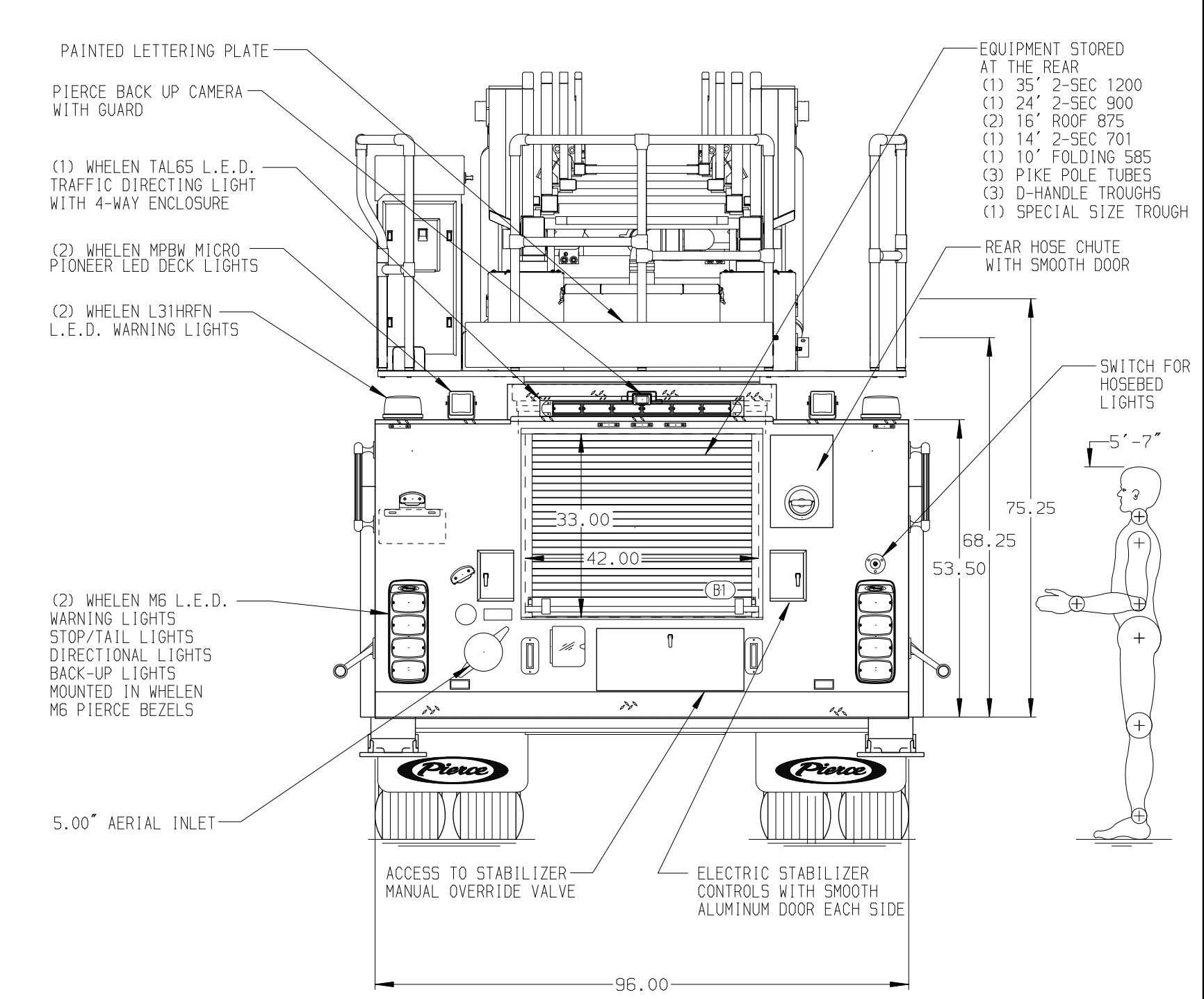
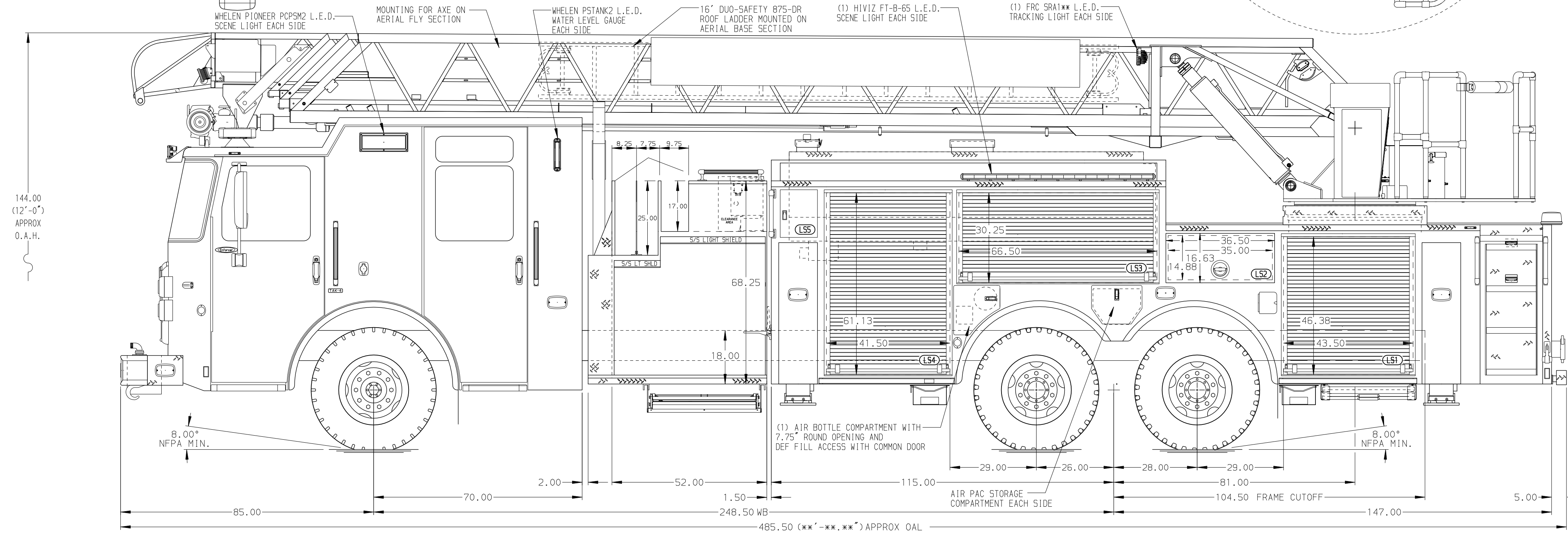


| BODY | WATER TANK |
|-----------------------------------------|----------------------------------------|
| Aerial, HD Ladder 105', Alum Body | 500 Gallon PAL Notched Poly Water Tank |
| COMPT, LEFT SIDE FRONT | Foam System |
| FH/FD RollUp Forward w/o Chute | Husky 3 Single Agent Foam System |
| COMPT, LEFT SIDE REAR | Foam Cell |
| FH/FD RollUp and Lift-up Rearward | 20 Gallon Foam Cell, Non-Reduced Water |
| COMPT, RIGHT SIDE FRONT | |
| Full Height RollUp Forward | |
| COMPT, RIGHT SIDE REAR | |
| Full Height RollUp and Lift-up Rearward | |



| CHASSIS | CAB | AXLE, FRONT, CUSTOM | TRANSMISSION | PUMPHOUSE | CROSSLAYS, 1.50" | SPEEDLAYS | SAFETY |
|---------------------------|------------------------------|------------------------|-----------------------------|-----------------------------|-----------------------------|------------------------|----------------------------------|
| Enforcer Chassis | 7010 Notched Enforcer Cab | 22,800 Lb TAK-4 Axle | Allison 6th Gen, 4000 EV5 P | 52" Control Zone Side Mount | (2) 1.50" Standard Capacity | Speedlays Not Required | Side Roll and |
| ENGINE | BUMPER | AXLE, REAR | | PUMP | CROSSLAYS, 2.50" | GENERATOR | Frontal Impact Protection |
| 500 HP Cummins X12 Engine | 16" Extended Stainless Steel | 52,000 Lb Meritor Axle | | 2000 GPM Waterous CSU | (1) 2.50" Standard Capacity | Generator Not Required | |

NOTE
DIMENSIONS SHOWN ARE APPROXIMATE AND ARE SUBJECT TO MINOR DEVIATIONS AS MAY OCCUR OR BE NECESSARY IN CONSTRUCTION. MINOR DETAILS NOT SHOWN.

- NO LIMITED RETRACTION REQUIRED
- ONE 1.50" OUTLET WITH 2.00" PIPING AND SWIVEL LOCATED TOP LEFT BUMPER
- SHOULDER RECEPTACLE WITH KOSMULL SUPER AUTO-EJECT LOCATED ON DRIVER SIDE OF THE CAB
- AIR INLET WITH DISCONNECT COUPLING IN THE DRIVER SIDE STEPMPELL
- BATTERY CHARGER LOCATED BEHIND OFFICERS SEAT
- BATTERY CHARGE INDICATOR LOCATED ON THE DRIVER SIDE SEAT RISER
- FIVE ADJUSTABLE SHELVES LOCATED IN COMPARTMENTS PER ORDER
- THREE FLOOR MOUNTED SLIDE-OUT TRAYS LOCATED PER ORDER
- ONE SWING-OUT ALUMINUM TOOLBOARD LOCATED IN COMPARTMENT PER ORDER
- ONE ADJUSTABLE 30 DEG TILT/SLIDE-OUT TRAY LOCATED IN COMPARTMENT PER ORDER
- ONE ZICO SCBA KD-UH-6-SF BRACKET IN COMPARTMENT PER ORDER
- ONE CITECH (4) DRAINER ASSEMBLY PER ORDER
- TURTLE TILE MATTING ON COMPARTMENT SHELVES & FLOORS PER ORDER
- FIVE BACK WALL MOUNTED PEGBOARDS LOCATED IN COMPARTMENT PER ORDER
- TWO 120V RECEPTACLES LOCATED PER ORDER
- TECNO RUNG LIGHTING AT AERIAL DEVICE
- NORCOLD M6Y518B REFRIGERATOR LOCATED BEHIND DRIVERS SEAT
- 3.00" RAISED AERIAL PEDESTAL
- LIFTING EYE ROPE RESCUE ATTACHMENT AT AERIAL TIP

Pierce MANUFACTURING INC.

JOB NO. 38675

SCALE 1:24 DATE

DRAWN BY LWE 26JAN23

CHECKED BY NAK 27JAN23

SHEET SIZE SHEET NO.

D 1 OF 1

CHASSIS DATA

TITLE 105' AERIAL LADDER AND BODY ASSEMBLY

FOR RATION RATION, NM

DWG NO. 38675AD

| REV | DATE | BY | CH | ENFORCER |
|---------|------|-----|----|----------|
| 28JUN23 | ANZ | CHR | | |
| 07JUN23 | ANZ | CHR | | |
| 30MAY23 | ANZ | CHR | | |
| 13APR23 | ANZ | CHR | | |