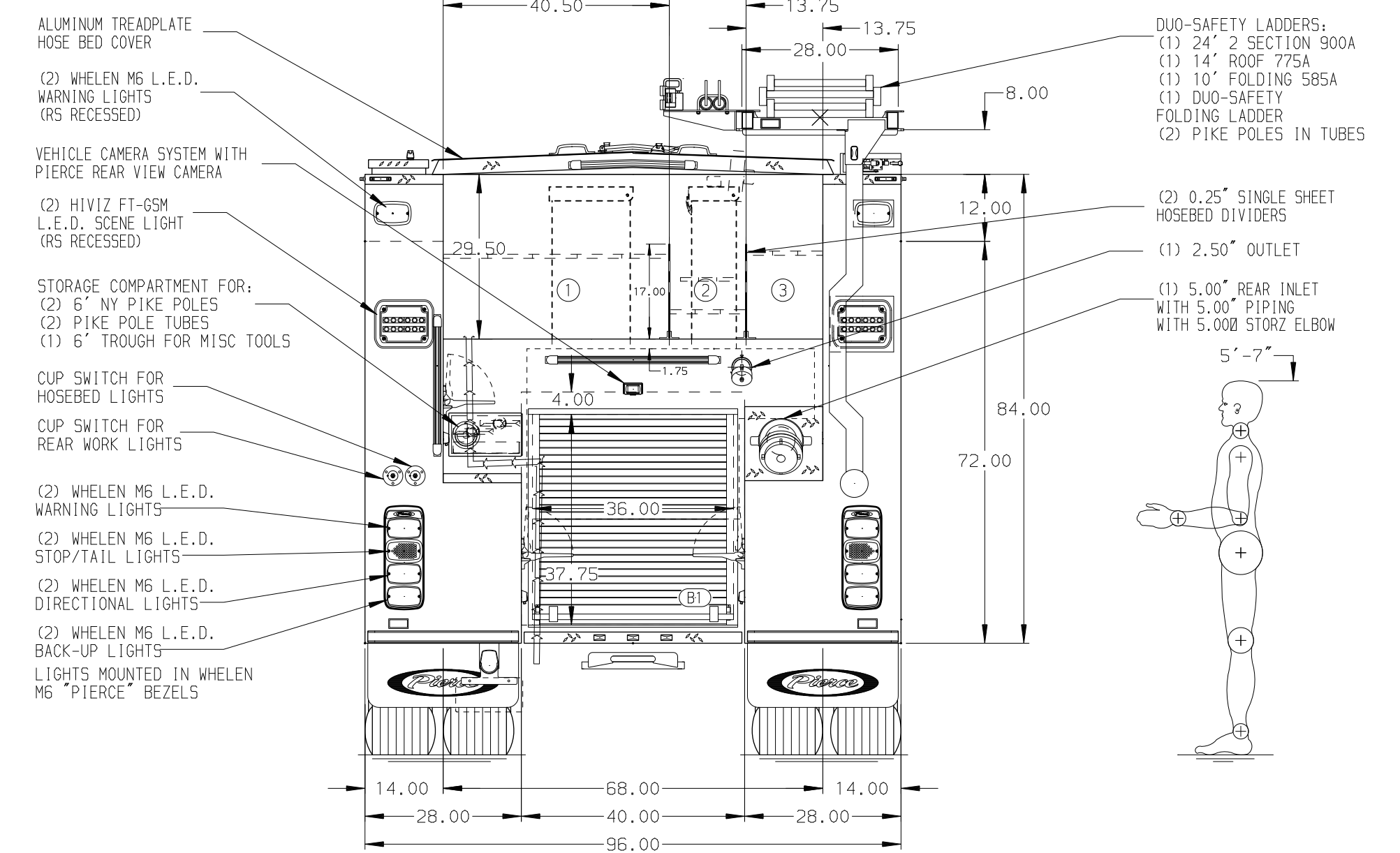
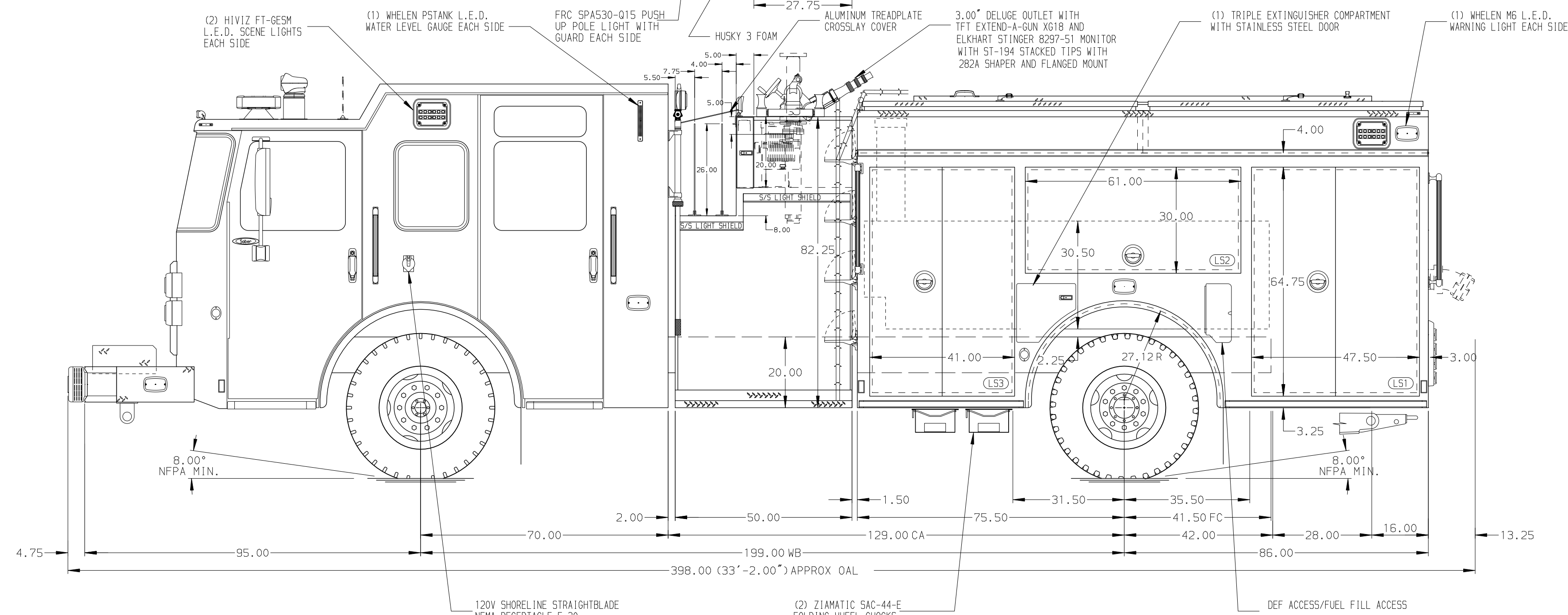


- HOSEBED CAPACITIES
- ① - 1000' OF 5.00" D.J. POLY HOSE
  - ② - 300' OF 1.75" D.J. POLY HOSE (ABOVE)
  - WITH 200' OF 2.50" D.J. POLY HOSE (BELOW)
  - ③ - 600' OF 2.50" D.J. POLY HOSE



ALUMINUM BODY

NOTE  
DIMENSIONS SHOWN ARE APPROXIMATE AND ARE SUBJECT TO MINOR DEVIATIONS AS MAY OCCUR OR BE NECESSARY IN CONSTRUCTION. MINOR DETAILS NOT SHOWN.

14DEC23	VHO	CCS			
24JUL23	VHO	CCS	DATA		
21JUN23	RWR	CCS	MAKE		
13MAR23	RHU	CCS	PIERCE		
03FEB23	JJB	CCS	MODEL		
REV	DATE	BY	CH	SABER FR	

		JOB NO.	38751
		SCALE	DATE
TITLE	1750-D-520P, 500G WATER, 20G FOAM, 161" FDLER PUMPER RS LADDER RACK, (2)XLAYS,(1)DEADLAY, DELUGE, HATCHES	DRAWN BY	SDS
FOR	WOODBURN FIRE DEPARTMENT	CHECKED BY	CZA
DWG NO.	38751AD	SHEET SIZE	SHEET NO.
		D	1 OF 1