

Pumper, PUC  
BODY  
Pumper, PUC, Aluminum  
CHASSIS  
Enforcer Chassis, PUC

### CHASSIS

#### AXLE, FRONT, CUSTOM

AXLE, REAR  
31,000 Lb Dana AxLe

ENGINE  
450 HP Cummins L9 Engine

TRANSMISSION  
Allison 5th Gen, 3000 EVS P  
BUMPER

22" Extended Painted Steel

C A B

2010, Encompass, Co., LLC

7010 Entomol cel. cub, FCC	

BODY  
WATER TANK  
1000 Gallon Poly Water Tank

COMPT, PUMPER, REAR  
33.50" FF Rollup Rear Compt w/Tailboard, PUC

COMPT. PUMPER RIGHT SIDE

189" Rollup Full Height & Depth Front & Rear, PUC

FIRE SUPPRESSION  
PUMPHOUSE  
Control Zone, PUC

PUMP  
1500 GPM Pierce PUC  
CROSSINGS 1500

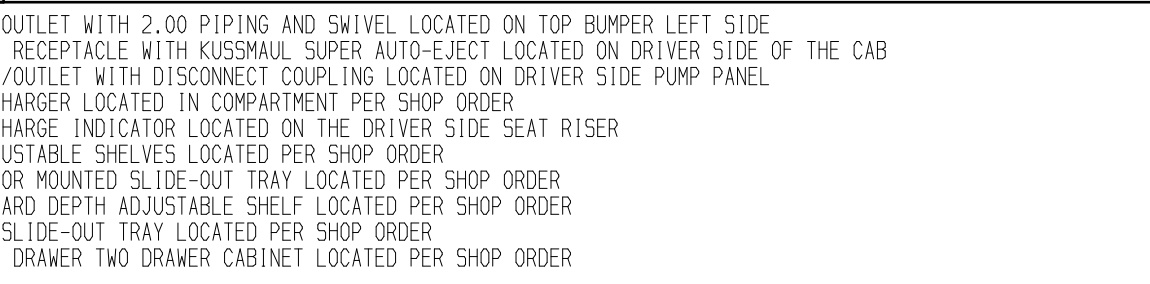
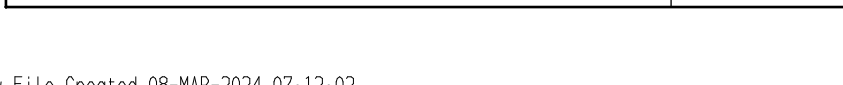
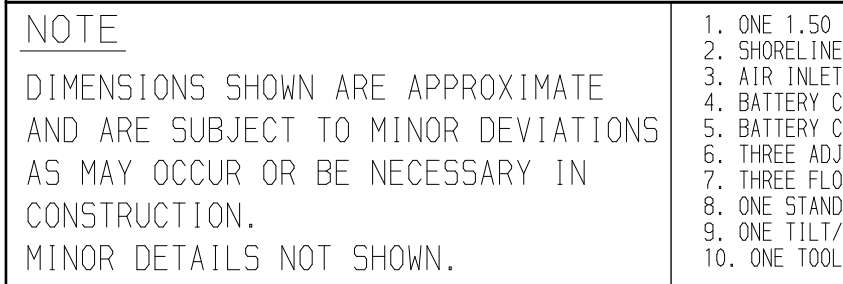
(2) 1.50", Poly Trays, 200'

CROSSLAYS, 2.50"

GENERATOR  
Generator Not Required

Foam System  
Foam System Not Required

Foam Cell  
 Foam Cell Not Required



---

11. ONE SWING-OUT TOOLBOARD LOCATED PER SHOP ORDER
12. TWO PARTITIONS LOCATED IN TRANS REAR COMPARTMENT PER SHOP ORDER
13. ONE VERTICAL PARTITION LOCATED PER SHOP ORDER
14. REBOARD ON BACK WALL IN COMPARTMENTS PER SHOP ORDER
15. TWO ZICO AIR BOTTLE BRACKETS LOCATED PER SHOP ORDER
16. HANNAY BOOSTER REEL MODEL SBEF34-23-24 LOCATED IN B1 WITH CAPACITY FOR 200' OF 1.00" BOOSTER HOSE