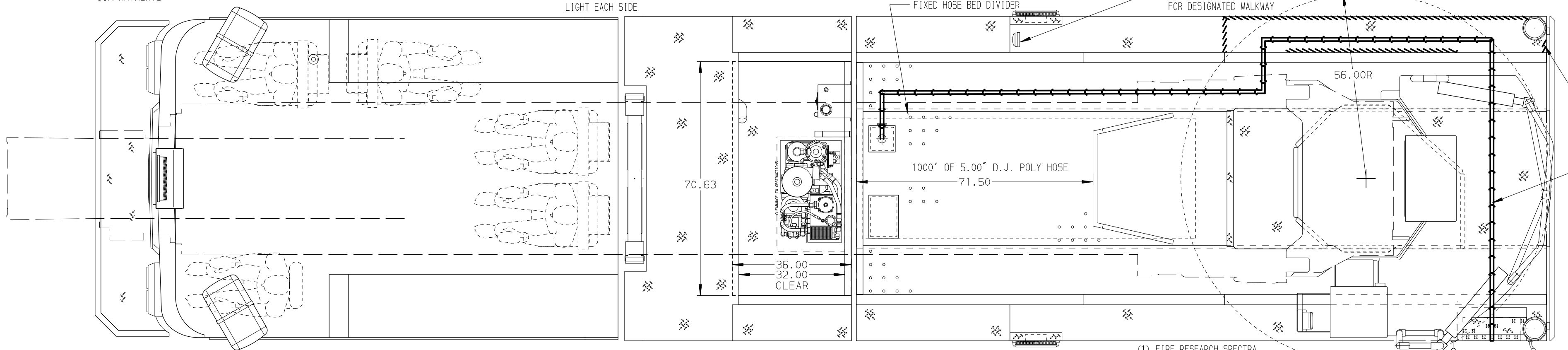
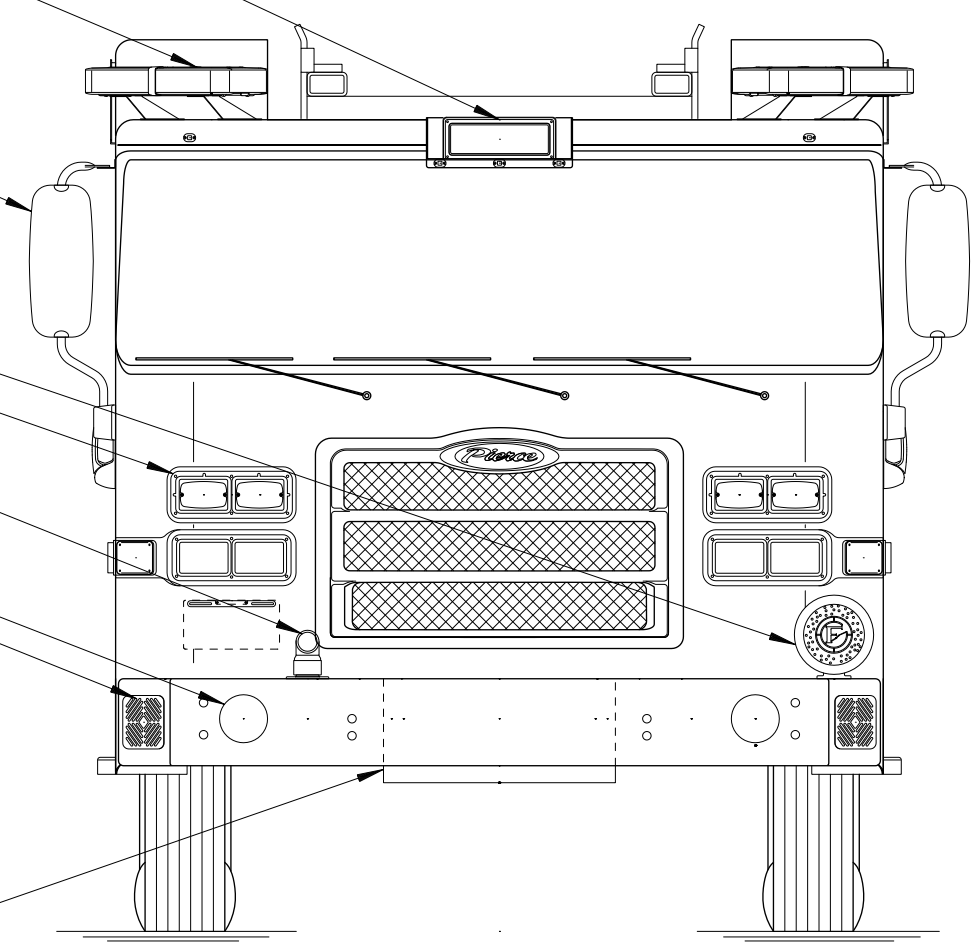
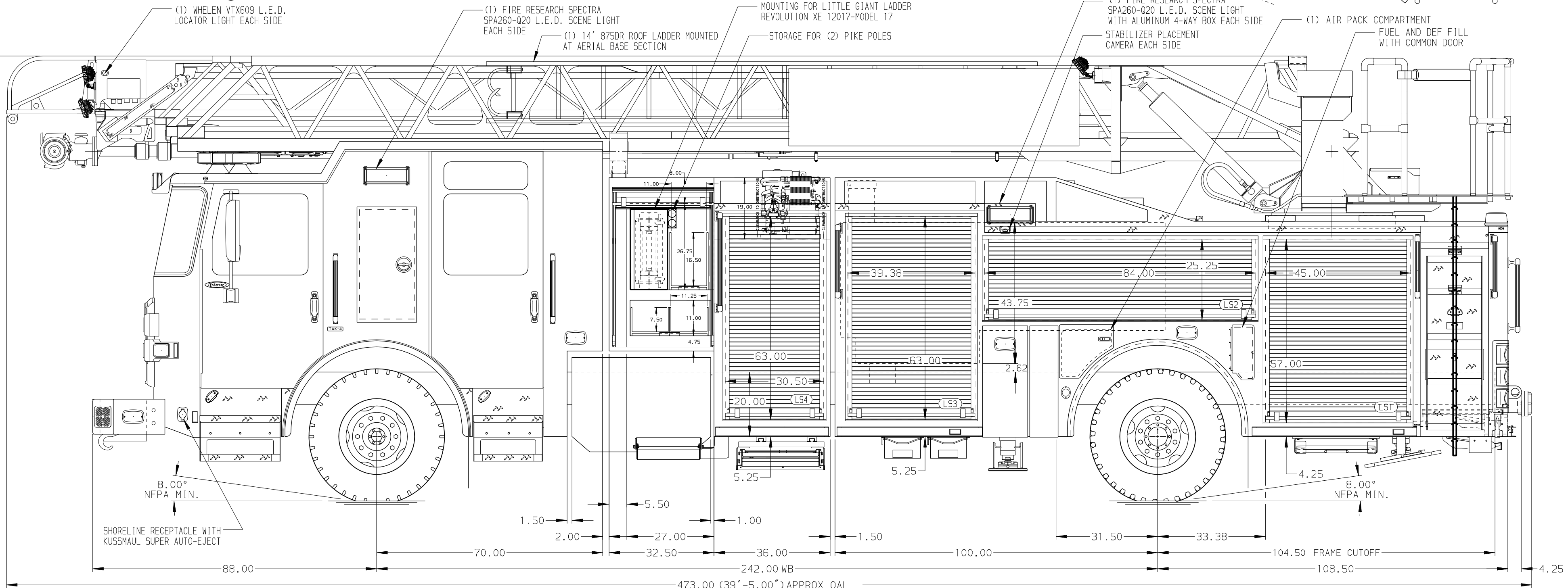


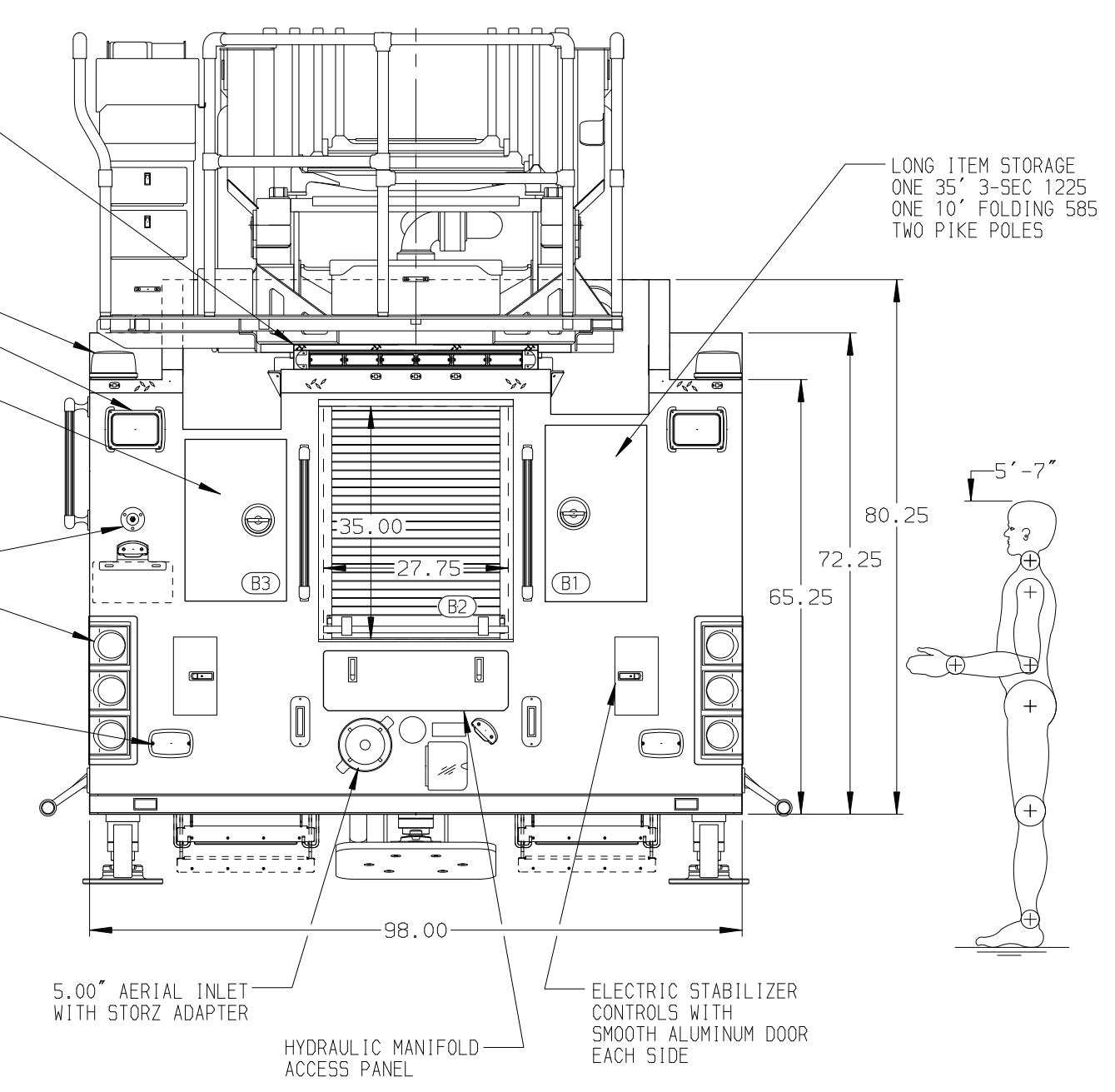
- (1) FIRE RESEARCH SPECTRA SPA951-020 L.E.D. VISOR LIGHT SPECIAL LOWERED BRACKET
- (2) WHELEN FREEDOM LV 21.50" L.E.D. LIGHTBARS MOUNTED AT 30 DEGREES
- (2) FIRE RESEARCH SRA110 TIP LIGHTS AND (1) FIRE RESEARCH SRA110 TRACKING LIGHT EACH SIDE
- RETRAC HEATED/REMOTE CONTROL MIRRORS WITH CONVEX SECTION
- (1) FEDERAL Q2B SIREN
- (2) WHELEN M6 L.E.D. WARNING LIGHTS IN A COMMON BEZEL EACH SIDE
- (1) 2.50" OUTLET WITH 2.50" PIPING
- (2) AIR HORNS
- (2) WHELEN SA315P SPEAKERS WITH STAINLESS STEEL GRILLE
- (3) WHELEN M6 L.E.D. WARNING LIGHTS EACH SIDE
- CENTER HOSE TRAY FOR 125" OF 1.75" HOSE WITH NOTCHED 4-WAY COVER



BODY 107' ASL Aluminum Body PUC COMPT, LEFT SIDE FRONT Full Height RollUp Forward COMPT, LEFT SIDE REAR Full Height RollUp Rearward COMPT, RIGHT SIDE FRONT Full Height RollUp Forward COMPT, RIGHT SIDE REAR Full Height RollUp Rearward	WATER TANK 475 Gallon Poly Water Tank Foam System Husky 12 Single Agent Foam System With Hercules CAFS 120 Foam Cell 25 Gallon Foam Cell, Reduced Water, PUC
---	--



- (1) WHELEN TAL65 L.E.D. TRAFFIC DIRECTING LIGHT WITH 4-WAY ENCLOSURE
- (2) WHELEN L31HRFN L.E.D. WARNING LIGHTS
- (2) FIRE RESEARCH SPA900-070 L.E.D. SCENE LIGHTS
- LONG ITEM STORAGE ONE 28" 2-SEC 1200 (22" WIDE) ONE 16" ROOF 875
- REAR SCENE LIGHT SWITCH
- (2) WRAP AROUND L.E.D. LIGHT SETS WITH STOP/TAIL, BACK UP AND DIRECTIONAL LIGHTS IN A COMMON BEZEL
- (2) WHELEN M6 L.E.D. WARNING LIGHTS



CHASSIS Enforcer Chassis, PUC ENGINE 525 HP Cummins X12 Engine	CAB 7010 Notched Enforcer Cab, PUC BUMPER 19" Extended Painted Steel	AXLE, FRONT, CUSTOM 24,000 Lb TAK-4 Axle AXLE, REAR 33,500 Lb Meritor Axle	TRANSMISSION Allison 5th Gen, 4000 EV5 P	PUMPHOUSE Control Zone, PAL/PAP PUC PUMP 1500 GPM Pierce PUC	CROSSLAYS, 1.50" (2) 1.50", Poly Trays, 200' CROSSLAYS, 2.50" (1) 2.50", Poly Tray, 200'	SPEEDLAYS Speedlays Not Required GENERATOR Generator Not Required	SAFETY Side Roll and Frontal Impact Protection	CUSTOMER APPROVAL APPROVED BY: _____ DATE: _____		JOB NO. 38778
NOTE DIMENSIONS SHOWN ARE APPROXIMATE AND ARE SUBJECT TO MINOR DEVIATIONS AS MAY OCCUR OR BE NECESSARY IN CONSTRUCTION. MINOR DETAILS NOT SHOWN.	1. BATTERY CHARGER LOCATED BEHIND THE DRIVER'S SEAT 2. BATTERY CHARGER INDICATOR LOCATED ON DRIVER'S SEAT RISER 3. L.E.D. LIGHT STRIPS WITH STAINLESS STEEL PROTECTIVE COVER LOCATED IN HOSE BED 4. PULL STRAP ON DOOR IN COMPARTMENT PER ORDER 5. ONE FIXED SPECIAL WIDTH AND MOUNTING SHELF IN COMPARTMENT PER ORDER 6. SEVEN ADJUSTABLE FULL WIDTH/FULL DEPTH SHELVES IN COMPARTMENT PER ORDER 7. TWO FLOOR MOUNTED SLIDE-OUT TRAYS IN COMPARTMENT PER ORDER 8. TWO FLOOR MOUNTED SLIDE-OUT TRAY WITH SIDE SLIDES IN COMPARTMENT PER ORDER 9. TWO ADJUSTABLE TOOL BOARDS MOUNTED TO SLIDE-OUT TRAYS IN COMPARTMENT PER ORDER 10. ONE SWING-OUT ALUMINUM TOOL BOARD IN COMPARTMENT PER ORDER	11. ONE VERTICAL PARTITION IN COMPARTMENT PER ORDER 12. ONE VERTICAL PEGBOARD PARTITION IN COMPARTMENT PER ORDER 13. HORIZONTAL EQUIPMENT MOUNTING TRACKS IN COMPARTMENT PER ORDER 14. TWO 120V DUPLEX RECEPTACLES LOCATED IN COMPARTMENT PER ORDER 15. TRIDENT FOLDING STEPS ON AERIAL DEVICE 16. REMOTE LADDER CONTROLS AT AERIAL TIP 17. DC POWER TO AERIAL TIP 18. 2-WAY INTERCOM SYSTEM BETWEEN AERIAL TIP AND TURNABLE 19. 1500 GPM HIGH FLOW WATERWAY 20. REMOTE MONITOR CONTROLS LOCATED PER ORDER	21. AERIAL LIMITED RETRACTION NOT REQUIRED	CHASSIS DATA MAKE PIERCE MODEL ENFORCER	TITLE FOR DWG NO.	107' ASCENDANT AERIAL LADDER AND BODY ASSEMBLY PFLUGERVILLE TRAVIS COUNTY ESD2 PFLUGERVILLE, TX 38778AD	DRAWN BY JGA CHECKED BY ZCH SHEET SIZE D	DATE 29APR22 02MAY22 SHEET NO. 1 OF 1		